



# Product Support Bulletin 2007-002

245 W. Forest Hill Avenue  
Oak Creek, WI 53154

Contact: Gary D. Van Deluyster, Service Manager – Phone: 800-445-9258 – Fax: 414-766-2379

## Maintenance of Way ~ Work Equipment Bulletin

**DATE:** August 14, 2007

**SUBJECT:** Bow Tie Cotter Pins Used to Retain Cylinder Attachment Pins - 3072213

**RATING:**  **DIRECTIVE**  
(Action is required)

**ALERT**  
(Potential Problem)

**INFORMATION**  
(Action is optional)

**PRODUCT IMPROVEMENT**  
(Enhance Product)

**MACHINE MODEL(S):** TRIPP

**SERIAL NUMBER(S):** 760125-760246

**SUMMARY:** The Cotter Pins used to retain the Rail Lifter Up/Down Cylinder Attachment Pins and the Tie Extractor Up/Down Cylinder Attachment Pins are being replaced with **Bow Tie Cotter Pins, p/n 3072213**.

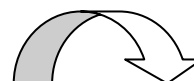
**OPERATIONAL IMPACT:** The Bow Tie Cotter Pins are stronger than the original cotter pins. Replacing the existing cotter pins with the Bow Tie Cotter Pins will help prevent the cylinder attachment pins from moving out of position.

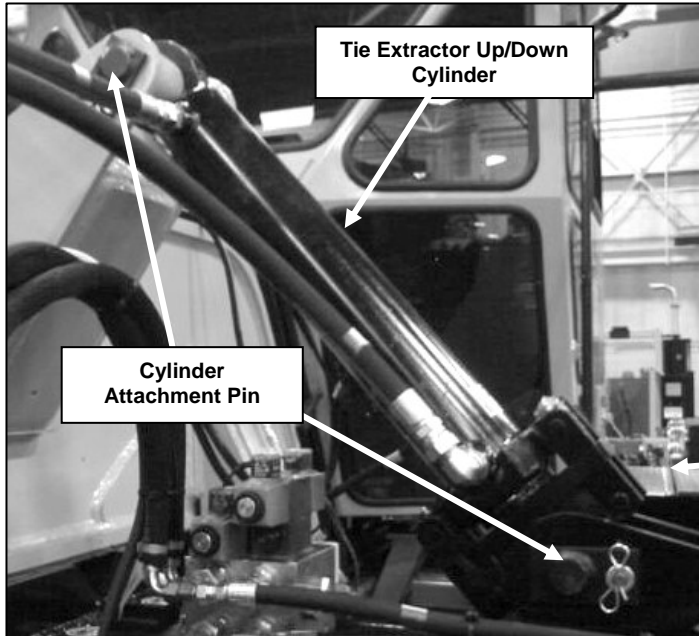
**ACTION:** Remove the existing cotter pins, p/n 3070315, and insert the Bow Tie Cotter Pins. There are 2 Tie Extractor Up/Down Cylinders on each machine; one on the left side and one on the right side. See Figure 1. Replace the cotter pins on both ends of the cylinders.

There are also 2 Rail Lifter Up/Down Cylinders on each machine; one on the left side and one on the right side. See Figure 2. Replace the cotter pins on both ends of the cylinders. See Figure 3 for a typical installation. A total of 8 pins are required for each machine.

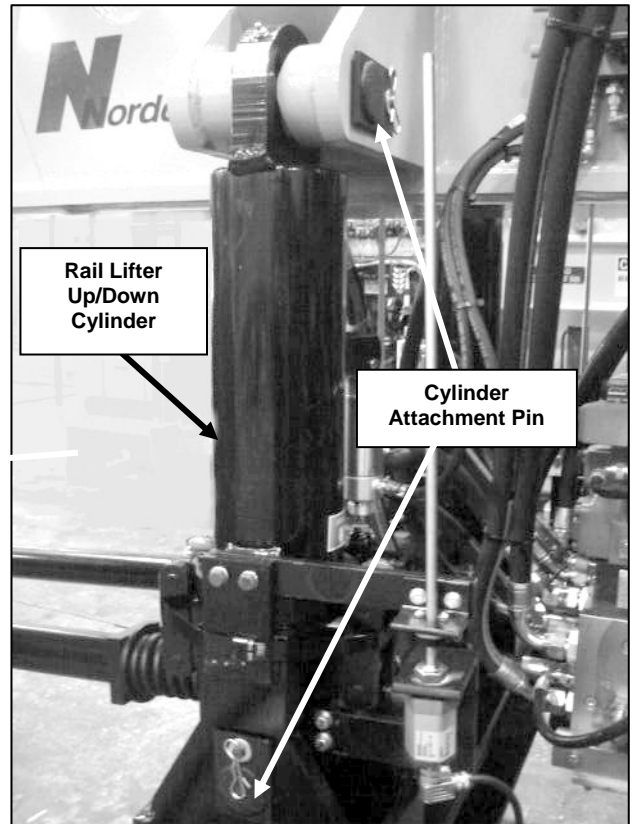
Machines with serial numbers of 760247 and above have had these pins installed at the factory.

**WARRANTY:** None

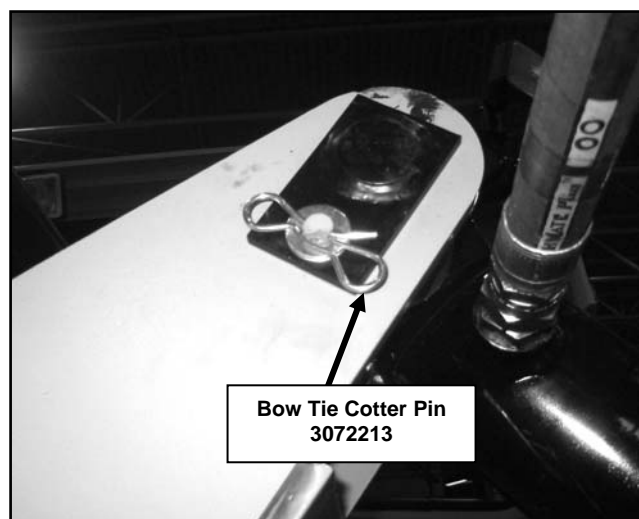




**Figure 1**  
Tie Extractor Up/Down Cylinder



**Figure 2**  
Rail Lifter Up/Down Cylinder



**Figure 3**  
Typical Bow Tie Installation