



Product Support Bulletin 2007-013A

245 W. Forest Hill Avenue
Oak Creek, WI 53154

Contact: Gary D. Van Deluyster, Service Manager – Phone: 800-445-9258 – Fax: 414-766-2266

Maintenance of Way ~ Work Equipment Bulletin

NOTE – THIS BULLETIN REPLACES BULLETIN 2007-013

DATE: April 12, 2008

SUBJECT: Pump Outlet Ball Valve Kit – 98410237 & 98450041
Brake Valve Filter Plate Kit - 98410238

RATING:

DIRECTIVE

(Action is required)

ALERT

(Potential Problem)

INFORMATION

(Action is optional)

PRODUCT IMPROVEMENT

(Enhance Product)

MACHINE MODEL(S):

CX Hammer
C-CX Hammer Conversion
Model C Spiking Machine
99C Spiking Machine
Hydra-Spiker Model 44
Hydra-Hammer Model B-2
SP2R Spike Puller
Grabber LS-2 Spike Puller
Grabber Conversion
Anchor Remover Model 67
Anchor Applicator Model E and Model F
Super Claws LS-1 Spike Puller
Super Claws Conversion
Production Screw Spiker
M3 Machines
SS Spiker
Two-Tie Screw Spiker

See Page 2 for Machine Serial Numbers

NORDCO Product Support Bulletin 2007-013A

SERIAL NUMBER(S): CX Hammer: 410500-410783
C-CX Hammer Conversion: 410010RBUG-410424RBUG
Model C Spiking Machine: 410010-410199 (except RBUG)
99C Spiking Machine: 410200-410424 (except RBUG)
Hydra-Spiker Model 44: 440001-440008
Hydra-Hammer Model B-2: 1044-1093
SP2R Spike Puller: 310001-310103
Grabber LS-2 Spike Puller: 330600-331001
Grabber Conversion: 330100RBUG-330599RBUG
Anchor Remover Model 67: 670001-670029
Anchor Applicator Model E and Model F: 680232-680325
Super Claws LS-1: 350500-350548
Super Claws Conversion: 350101RBUG-350499RBUG
Production Screw Spikers: 400100RBUG-400111RBUG
M3 Machines: 562-589, 450001-450242
SS Spiker: 390001-390245
Two- Tie Screw Spiker: 400101-400103

SUMMARY:

Contamination in the hydraulic system may become trapped in the Brake Valve of these machines, which might prevent the brakes from applying normally.

To help keep contamination out of the Brake Valve, a **Brake Valve Filter Plate Kit, p/n 98410238**, has been designed and is now available. See Figure 1 on Page 3. The SS Spiker uses a different type of brake valve than the rest of the listed machines and does not require the Filter Plate.

Also, there have been instances of the brakes not being applied when the Emergency Stop Pushbutton was pressed and the Brake Valve was stuck in the released position. This was due to pressure being held in the Brake Cylinders by the Check Valve installed on the outlet of the main pump.

This Check Valve was installed to allow the Emergency Pump to be operated without back feeding through the main pump. A Ball Valve replaces the original Check Valve on the pump outlet port. This Ball Valve is opened for normal operation and closed when the Emergency Pump is being used.

There are 2 different sizes of Ball Valves used, depending on the machine and the hydraulic pump installed on that machine. Model C Spiking Machines, 99C Spiking Machines, Grabber Spike Pullers, Anchor Removers, Production Screw Spikers and some M3s are equipped with a Vickers model PVH131 or PVM131 pump and use **Ball Valve Kit 98450041**. All other listed machines are equipped with a Vickers model PVH57 or PVM57, model PVH74 or PVM74 or model PVH98 or PVM98 pump and use **Ball Valve Kit 98410237**. Please refer to the chart on Page 4 to determine which Ball Valve you will need for your particular machine.

OPERATIONAL IMPACT:

The 98410238 Filter Plate Kit will help prevent contamination from entering the Brake Valve from the Pump and also from the Brake Cylinders which could cause the valve to stick in the released position.

The 98450041 or 98410237 Ball Valve Kit will allow the pump pressure to quickly bleed out of the Brake Cylinders in the event the Emergency Stop Pushbutton is pressed.

NORDCO Product Support Bulletin 2007-013A

ACTION:

The Filter Plate is installed directly under the existing Brake Valve. See Figure 2 on Page 3. Remove the 4 screws holding the Brake Valve to the manifold. Place the Filter Plate in position on the manifold and reinstall the Brake Valve using the longer mounting screws included with the Filter Plate Kit. **The Filter Plate is NOT required on SS Spiker machines.**

The Ball Valve replaces the pump outlet Check Valve. Remove the 4 capscrews holding the Outlet Hose and Check Valve to the pump. Remove the Check Valve. Install the Ball Valve on the Pump with the O-ring toward the Pump and the Operating Shaft toward the engine. Reinstall the Outlet Hose using the bolts supplied with the Ball Valve Kit. See Figure 3 on Page 4 and refer to the chart on Page 4 to determine which Ball Valve Kit you need for your particular machine. **Make sure to follow all Lock Out/Tag Out procedures when installing the Filter Plate and Ball Valve.**

WARRANTY:

Filter Plate Kits and Ball Valve Kits will be supplied under warranty for all machines built in 2006 or 2007. Please contact the Nordco Service Department at 1-800-445-9258 to see if your machine is covered under this warranty.

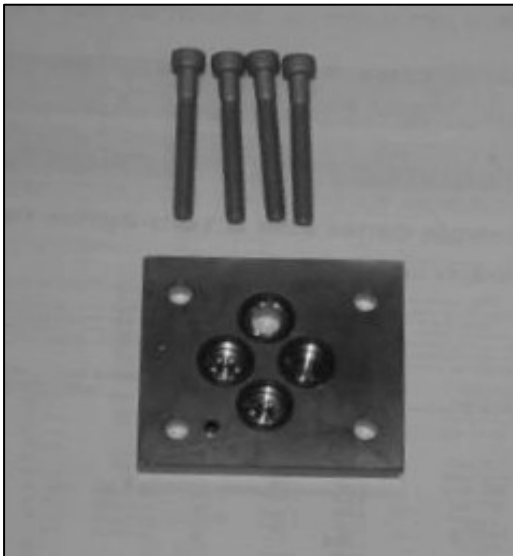


Figure 1
Brake Valve Filter Plate Kit - 98410238

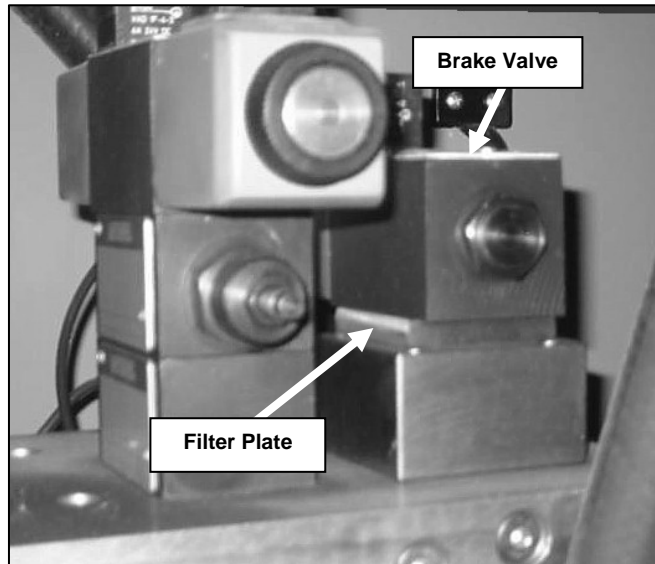


Figure 2
Typical Filter Plate Kit Installation
(SP2R Shown; other machines are similar)

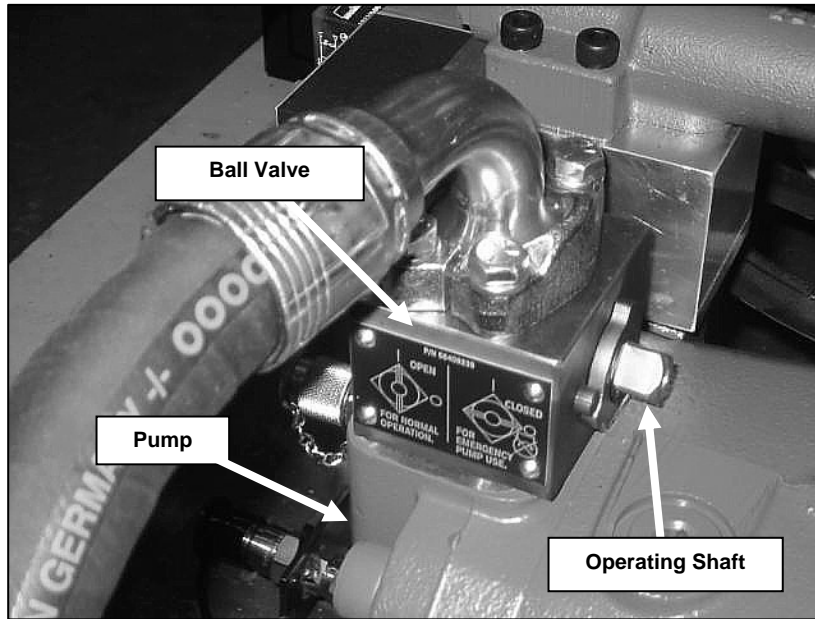


Figure 3
Typical Ball Valve Kit Installation
 Install with Operating Shaft toward Engine

Pump Ball Valve Kit Selection Chart

MACHINE	SERIAL NUMBERS	PUMP	BALL VALVE KIT
CX Hammer	410500-410783	PVH98 or PVM98	98410237
C-CX Conversions	410010RBUG-410424RBUG	PVH98 or PVM98	98410237
Model C Spiking Machine	410100-410199 (except RBUG)	PVH131 or PVM131	98450041
Model 99C Spiking Machine	410200-410424 (except RBUG)	PVH131 or PVM131	98450041
Hydra-Spiker Model 44	440001-440008	PVH131 or PVM131	98450041
Hydra-Hammer Model B-2	1044-1093	PVH131 or PVM131	98450041
SP2R Spike Puller	310001-310101	PVH98 or PVM98	98410237
Grabber LS-2 Spike Puller	330600-331001	PVH131 or PVM131	98450041
Grabber Conversion	330101RBUG-330599RBUG	PVH98 or PVM98	98410237
Anchor Remover	670001-670029	PVH131 or PVM131	98450041
Anchor Applicator Model E & F	680232-680325	PVH57 or PVM57	98410237
Super Claws LS-1 Spike Puller	350500-350548	PVH74 or PVM74	98410237
Super Claws Conversion	350101RBUG-350499RBUG	PVH74 or PVM74	98410237
Production Screw Spiker	400100RBUG-400111RBUG	PVH131 or PVM131	98450041
M3*	562-589, 450001-450242	PVH74 or PVM74	98410237
M3*	562-589, 450001-450242	PVH98 or PVM98	98410237
M3*	562-589, 450001-450242	PVH131 or PVM131	98450041
SS Spiker	390001-390245	PVH98 or PVM98	98410237
Two-Tie Screw Spiker	400101-400103	PVH131 or PVM131	98450041

*Check your particular machine to determine pump model used.