



# Product Support Bulletin 2005-012

245 W. Forest Hill Avenue  
Oak Creek, WI 53154

Contact: Gary D. Van Deluyster, Service Manager – Phone: 800-445-9258 – Fax: 414-766-2379

## Maintenance of Way ~ Work Equipment Bulletin

**DATE:** November 23, 2005

**SUBJECT:** 4-Setscrew Curve Block Anvil Sleeve Kit – 98410455  
4-Setscrew Standard Anvil Sleeve Kit – 98410456

**RATING:**  **DIRECTIVE**  
(Action is required)  **ALERT**  
(Potential Problem)

**INFORMATION**  
(Action is optional)  **PRODUCT IMPROVEMENT**  
(Enhance Product)

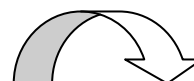
**MACHINE MODEL(S):** CX Hammer  
Spiking Machine Model SS-B

**SERIAL NUMBER(S):** CX Hammer: 410500 and above (except CSX machines s/n 410651  
and higher and BNSF machines s/n 410657 and higher)  
SS-B: 390200 and above

**SUMMARY:** The original Anvil Sleeve p/n 22880059 (Standard Sleeve) and 22880061 (Curve Block Sleeve) is attached to the Sleeve Adapter Flange (p/n 32356290 with three 3/8" dog-point setscrews. There have been problems with the setscrews breaking during use. To solve this problem, new Anvil Sleeves have been designed with four 5/8" setscrews. The new sleeves are available as p/n **73034100 (Standard Sleeve)** and **73034101 (Curve-Block Sleeve)**.

There have also been some problems with the Anvil Sleeve Spring bulging out when compressed. This can cause problems with spike feeding. The spring also could slide up over the Sleeve Adapter Flange. Both of these problems have been solved with a new **Anvil Sleeve Spring (p/n 3614365)**. This spring is a direct replacement for the original 3614364 spring.

The upper end of the spring is held in place with a retaining ring. This ring also prevents the setscrews from backing out completely. However, the setscrews could jam against the ring and make removal difficult. To solve this problem, **Slotted Retaining Ring (p/n 63403250)** replaces the original retaining ring. This new ring is split and held in place with a **Hose Clamp (p/n 24543594)**. The ring is easily removed even if the setscrews are jammed against it.



## NORDCO Product Support Bulletin 2005-012

**OPERATIONAL IMPACT:** If the setscrews break, the anvil sleeve can fall out or the sleeve can rotate which will interfere with spike feeding. Increasing the number of setscrews as well as the diameter will help prevent breaking of the setscrews. Installing the Split Retaining Ring will make repairs faster and easier. This will result in reduced machine down-time.

**ACTION:** When changing the Anvil Sleeve, the Sleeve Adapter Flange must also be changed as well as the set screws. All of the required parts for 1 spike gun are available as a kit and may be ordered using part number **98410455 for the Curve Block Sleeve Kit** and **98410456 for the Standard Sleeve Kit**. The 3614365 Anvil Sleeve Spring, the Slotted Retaining Ring and the Hose Clamp are also included in the kits. See Figure 1 & 2 for a complete list of replacement parts included in the kits. The parts replaced by the kit parts are also listed.

**WARRANTY:** None

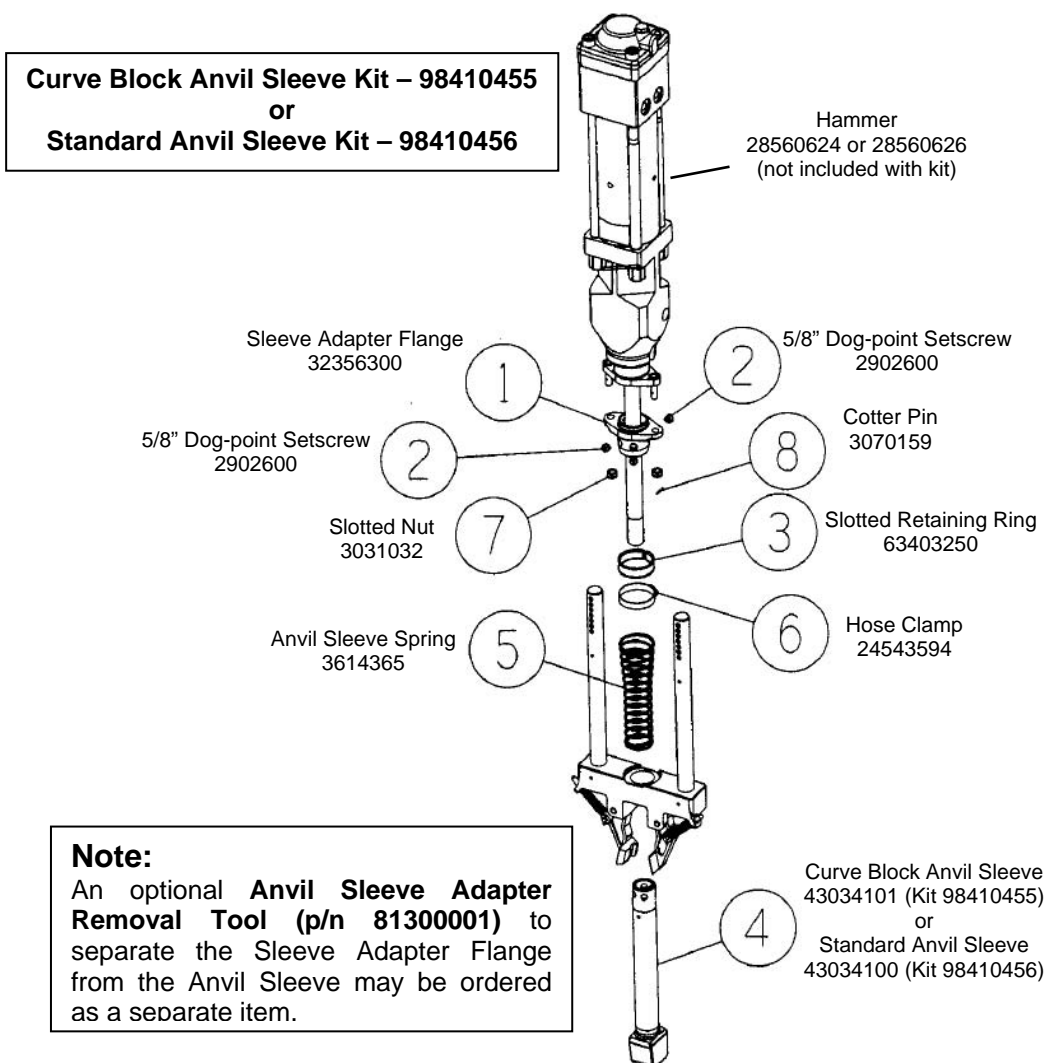
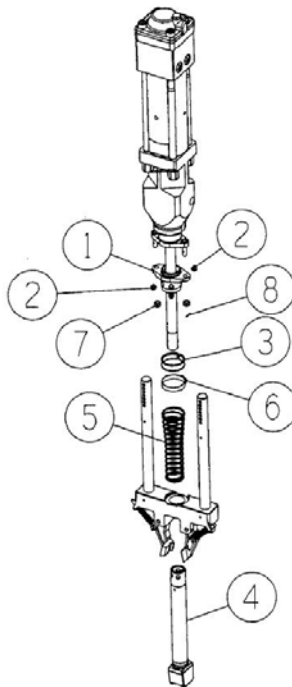


Figure 1

## NORDCO Product Support Bulletin 2005-012

<b>Curve Block Anvil Sleeve Kit – 98410455</b>				
Item No.	Description	Original P/N	Replaced by P/N	Qty in Kit
1	Flange, Sleeve Adapter	32356290	32356300	1
2	Setscrew, 5/8" x 9/16" Full Dog Point	2902564	2902600	4
3	Ring, Slotted Retaining	63894821	63403250	1
4	Sleeve, Hammer Anvil (Curve Block)	22880061	73034101	1
5	Spring, Anvil Sleeve	3614364	3614365	1
6	Clamp, Hose	N/A	24543594	1
7	Nut, Slotted 1/2-20	3031032	Same	2
8	Pin, Cotter	3070159	Same	2

<b>Standard Anvil Sleeve Kit – 98410456</b>				
Item No.	Description	Original P/N	Replaced by P/N	Qty in Kit
1	Flange, Sleeve Adapter	32356290	32356300	1
2	Setscrew, 5/8" x 9/16" Full Dog Point	2902564	2902600	4
3	Ring, Slotted Retaining	63894821	63403250	1
4	Sleeve, Hammer Anvil (Standard)	22880059	73034100	1
5	Spring, Anvil Sleeve	3614364	3614365	1
6	Clamp, Hose	N/A	24543594	1
7	Nut, Slotted 1/2-20	3031032	Same	2
8	Pin, Cotter	3070159	Same	2



**Figure 2**