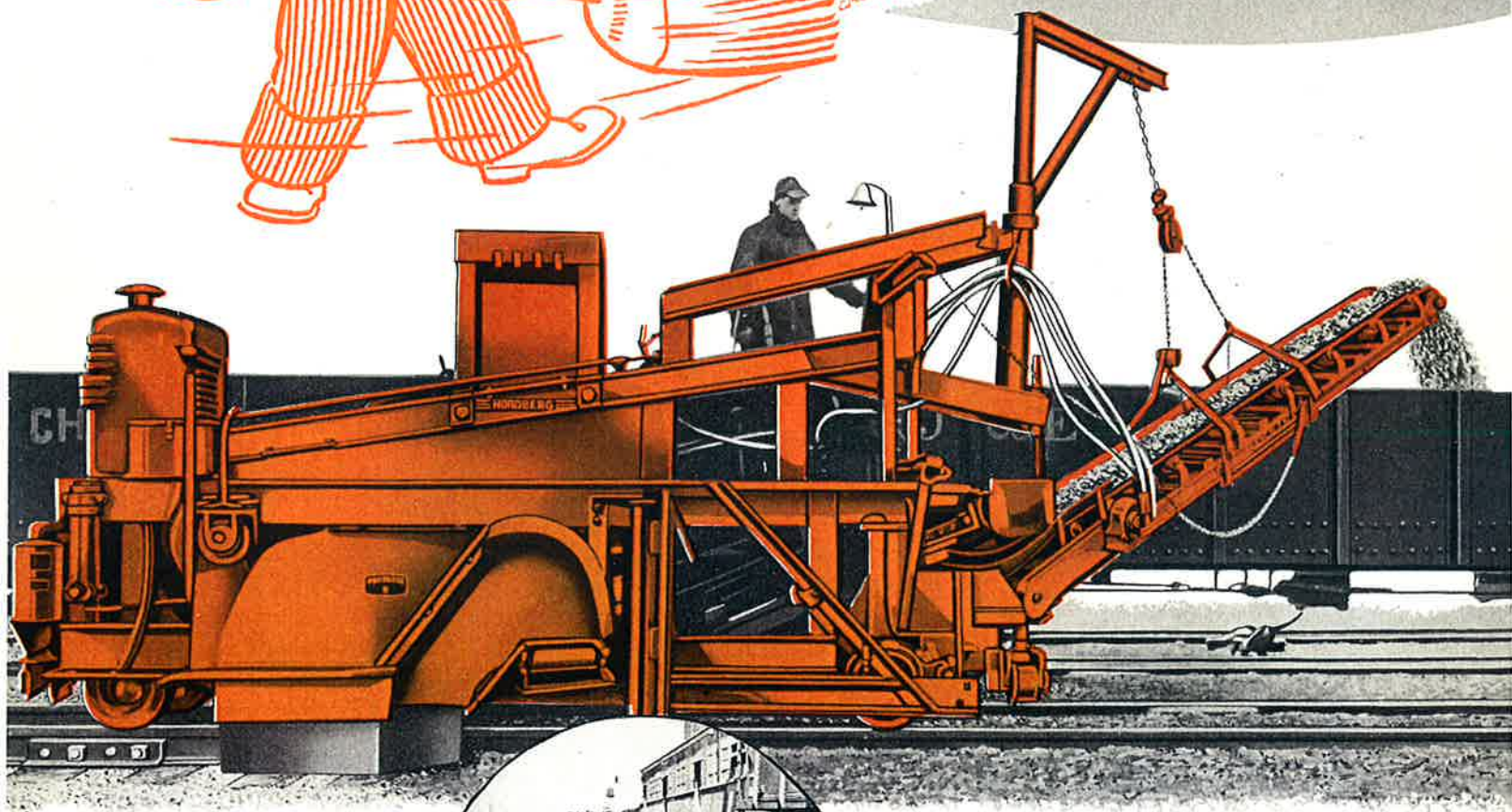
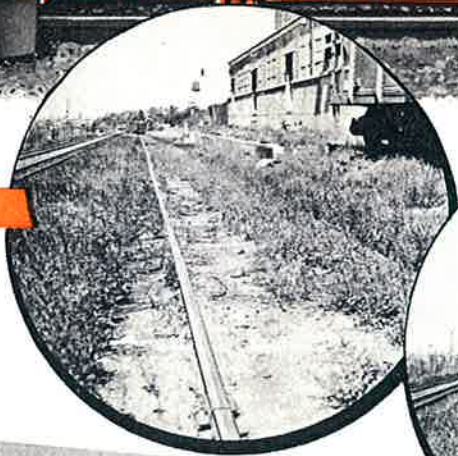


NORDBERG

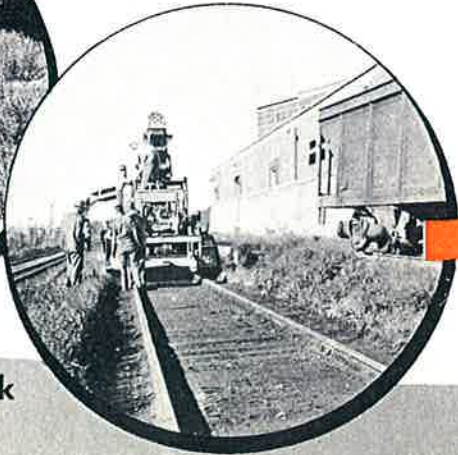
DIRT SWEEPER LOADER YARD CLEANER



BEFORE



AFTER



Typical Industry Track



Cleans right down



**No followup handwork required...
Grades intertrack smooth and level**

A good solution to an old problem

Dirty railroad yards have plagued maintenance of way officials for years — and created a serious hazard to trainmen. Cleaning yards by hand involves a considerable labor force and high costs.

The DSL Yard Cleaner was invented by experienced railroad men to lick this problem in their own yards. It was designed and built by Nordberg in shops with facilities to meet exacting mechanical requirements.


What it will do

The DSL will really *clean* yard tracks — you don't need hand labor to follow it. It removes all debris between rails and intertrack and can do it in one pass so as to limit the time during which the track is out of service. It cleans right down to the tops of the ties — and along the inner and outer edges of the rails — but never disturbs or damages ties. Intertrack space is graded smooth and exactly level with the tie tops. The DSL can load on adjacent tracks or on the track being cleaned so only one track need be taken out of service.

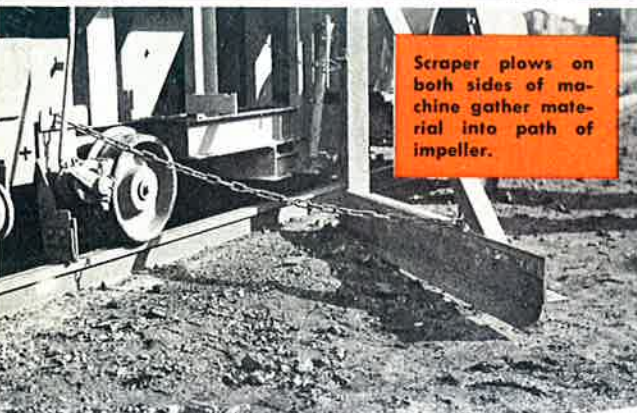
The DSL Yard Cleaner is a completely self propelled machine with any variation of speed from 1/2 to 15 miles per hour. It has sufficient power to pull a half dozen push cars equipped with two-yard dump boxes.

How it works


Scrapers on both sides plow dirt from the intertrack space onto the end of the ties where the revolving sweeper impeller picks it up—along with the dirt between the rails — and delivers it to the final 21 ft. waste conveyor. The conveyor loads on to push cars, gondolas, and most hopper cars.



A stretch of track uniformly cleaned and smoothly graded by DSL Yard Cleaner.



Scraper plows on both sides of machine gather material into path of impeller.



Wasting conveyor can load into dump body push trucks on the same track as it cleans.

to the Tie Tops

Impeller does actual cleaning

Actual cleaning is done by the impeller which rotates at high speed. It is composed of short lengths of 3/4" steel cable and will lift all material, including pieces the size of a brick, and deliver it to the waste conveyor. This impeller is as long as the ties and cleans thoroughly between rails and close up to each side of the rails so that spike heads are exposed after cleaning. This impeller action never damages ties — it merely sweeps them clean as though they were swept with a broom. There is never any damage to ties (even those deeply rail cut).

Powered by 50 HP Engine

The DSL is powered with a 50 HP gasoline engine equipped with a self starter and battery. The engine drives the impeller and hydraulic pumps. These pumps drive hydraulic motors which propel the machine, and also furnish power for driving the belt conveyors. The loader is equipped with a 90 gallon tank which carries the hydraulic fluid for running the motors. It is equipped with all necessary filters to keep the hydraulic system perfectly clean.

The DSL Yard Cleaner has a draw-bar pull of 2500 lbs. in the lower speeds. It is equipped with three point suspension so that it will run on exceedingly rough track without danger of derailment.

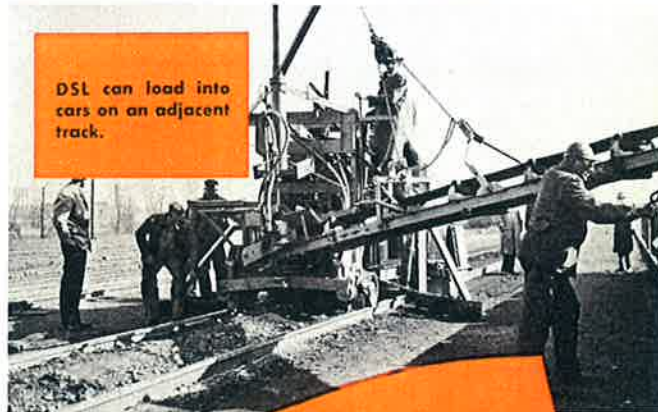
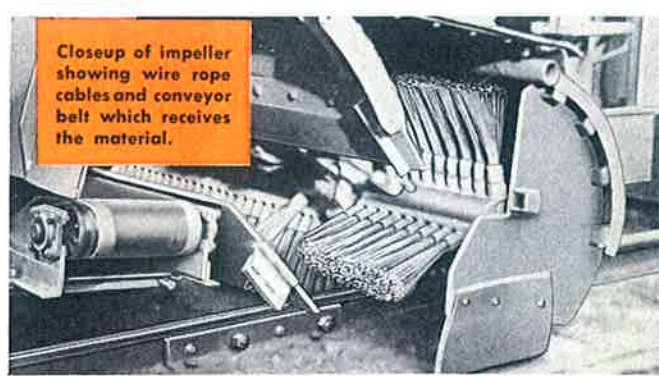
The control for lowering, raising and adjusting the impeller is hydraulic and is simple and fast. The DSL can be set off the track easily. It is equipped with hydraulically operated run-off wheels which lift the entire machine on to run-off rails to allow it to be cleared from the track.

Propulsion is under direct control of the operator who faces the direction of travel and is able to watch track ahead to be cleaned and the position of the discharge conveyors. Impeller adjustment and in-gathering plows are controlled by a helper who walks with the machine in order to keep these parts adjusted to meet changing conditions.

Makes a tough job easy . . . and economical

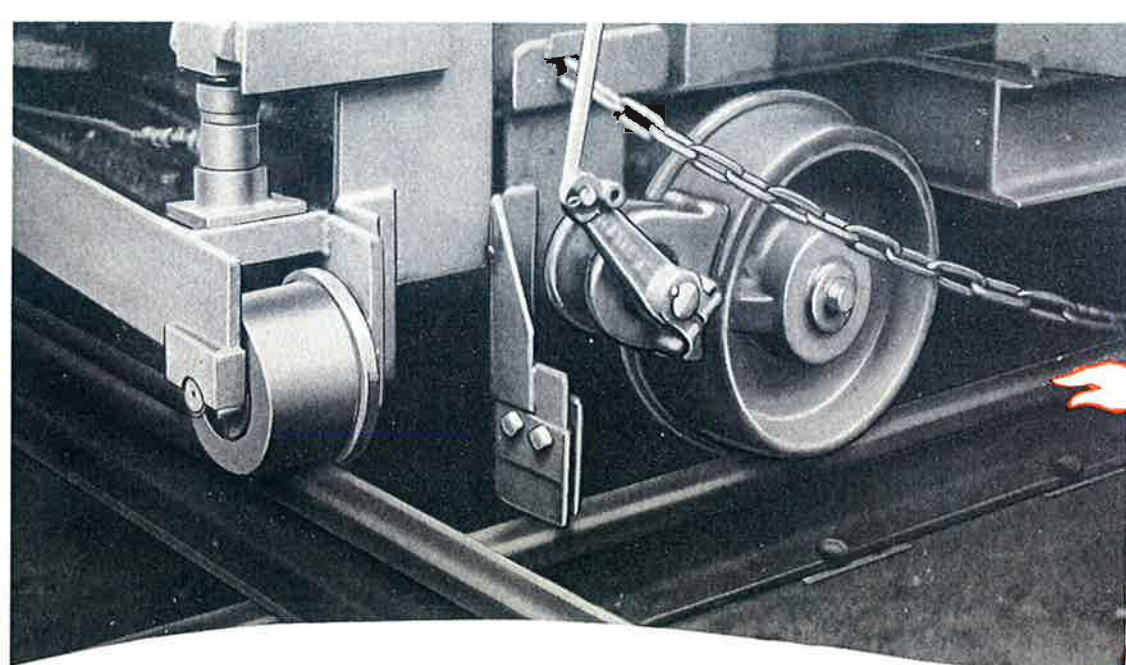
The DSL Yard Cleaner can clean and load on one track or clean one track and load on adjacent track so it is possible to work it with only one track out of service — and never more than two. It will also clean and load on a track adjacent to a building because the minimum working width of the DSL is only 9 ft. It cleans any standard gauge track except through turnouts.

The Yard Cleaner can be used ahead of a rail laying gang, especially through yards and stations, because it cleans thoroughly right down to tops of the ties and exposes the heads of spikes and nuts of track bolts.



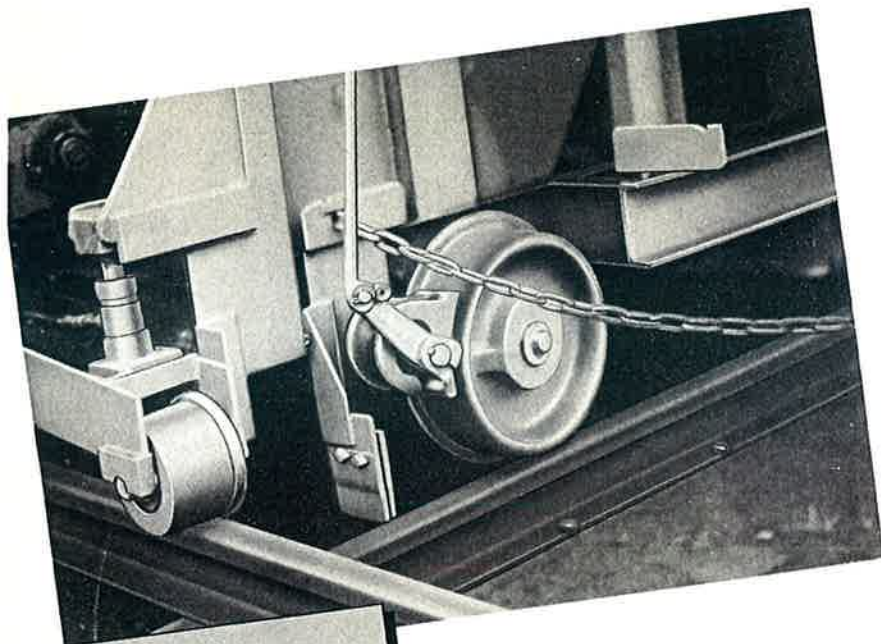
**The NORDBERG
DSL YARD CLEANER**
will clean any track
anywhere, in one pass





**Quickly and easily
removed from track**

The DSL Yard Cleaner can be set off the track quickly. It is equipped with hydraulically operated run-off wheels which lift the entire machine onto run-off rails.



SPECIFICATIONS

- Weight — 17,300 lbs.
- Height — 12 ft., 1 in.
- Height with boom removed for shipping — 8 ft., 6 in.
- Width for shipping — 9 ft., 4 in.
- Width of clean-up area — can be varied from 9 to 15 ft.
- Length — 17 ft., 1 in.
- Drawbar Pull — 2,500 lbs.

**Look to
NORDBERG**

**... for continually improved TRACK MAINTENANCE MACHINERY
to do a Better, Faster Maintenance Job at Lower Cost**



OTHER NORDBERG POWER TOOLS FOR TRACK MAINTENANCE

RAIL GRINDER
ADZING MACHINE
SPIKE HAMMER

TRACK WRENCH
CRIBEX
RAIL DRILL

SPIKE PULLER
POWER JACK
TRACK SHIFTER

BALLASTEX

SCREENEX

NORDBERG MFG. CO. • MILWAUKEE 7, WISCONSIN