

New format to help you find the right product

Featured products in the Equipment Services Bulletin are now classified according to their primary function and benefit. This is designed to help you identify the parts, exchange components and repair & upgrade kits that are right for your application. The categories are:

- **Repair & Maintain Machine:** Replacement for worn/broken components.
- **Preventative Maintenance:** Help prevent future wear or breakdowns.
- **Improve Machine Productivity:** Enhance machine performance with upgraded components and new features.
- **Operator Comfort & Productivity:** Make it easier to operate and service the machine.

The Equipment Services Bulletin is also available in email format. If you or someone in your organization would like to receive the email edition, contact Nordco Parts at the phone or email address below.

Featured Exchange and Rebuilt Component: BAAM Workhead Assembly

Part number: 90690124

Machine: BAAM Bulk Automatic Anchor Machine

What it does: The Workhead Assembly is a complete workhead replacement package. It features all required hydraulic and mechanical components, including workhead frame, pre-assembled into ready-to-install unit.

REPAIR & MAINTAIN
MACHINE



Nordco BAAM.



90690124 BAAM Workhead Assembly. Pictured at left is frame with hydraulic components, and at right, workhead.

HOW THE EXCHANGE COMPONENT PROGRAM WORKS:

Send in your worn-out unit, and Nordco sends you a completely upgraded, like-new component with a full factory warranty. Nordco offers a wide selection of exchange components for multiple machines. Contact Nordco for more information.

Dacromet Bolt Kits make manifold maintenance easier

Nordco Dacromet Bolt Kits consist of valve mounting bolts with a special anti-corrosion coating that resist seizing up in tapped holes. This is a big plus when servicing machines outside, especially in winter weather. Dacromet Bolt Kits are available for the SP2R Spike Puller and CX Hammer Spiker. Contact Nordco Parts if you are interested in Kits for additional machines.

98410835 Dacromet Bold Kit for CX Hammer

98310102 Dacromet Bold Kit for Left Manifold 50078931 on SP2R

98310103 Dacromet Bold Kit for Right Manifold 50078932 on SP2R

PREVENTATIVE
MAINTENANCE



98410835 Dacromet Bolt Kit for CX Hammer.

Featured Exchange and Rebuilt Component: Hydraulic Vibrator with Motor and Coupler

Part number: JC0607VAAEX

Used with: MK IV Tamper

What it does: The Hydraulic Vibrator with Motor and Coupler is a complete, ready-to-install replacement package for the MK IV Tamper. It includes all required hydraulic and mechanical components, and features an access screen and lifting eyes for ease of handling and installation.
Also available as a new component.

REPAIR & MAINTAIN
MACHINE

JC0607VAAEX Hydraulic
Vibrator with Motor and Coupler.



Make winter operations easier with these machine upgrades

Cold temperatures, snow and short days create a special set of challenges when operating and servicing maintenance-of-way machinery in the field. Here are just a few suggestions from Nordco that can help make the winter months a little easier for machine operators and mechanics.

OPERATOR COMFORT
& PRODUCTIVITY

IMPROVE MACHINE
PRODUCTIVITY

98410271 Dome Red/White LED Lamp Kit: White LEDs provide superior interior cab illumination over incandescent lighting. Switch to red LEDs when working in low light. For CX Hammer Spiker, Anchor Remover, Nipper Clipper and TRIPP Tie Exchanger.



98760056 Interior Cab Lighting Kit: 5-Watt halogen lights on adjustable swivel mounts allows operator to direct light where it's needed. For TRIPP.

98411207 Espar Cab Heater Kit: Works independently, making it possible to heat cab without running engine. Draws in and heats cold outside air and delivers it to cab interior. Also helps prevent windshield ice-up. For CX Hammer.

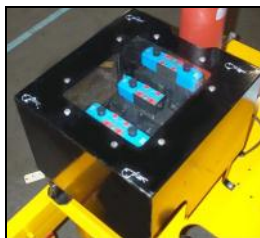


98410240 Spike Tray Black Curtain Kit: Heavy duty vinyl curtains block spike tray opening. Helps keep cold, snow and debris from entering the cab during travel. For CX Hammer.

96412822 Steel Manifold Covers Assembly: Set of five covers with clear, impact-resistant viewing panels protects manifold stacks from ice, snow and debris. This helps prevent damage to bolts, valves and O-rings, and makes field maintenance easier, especially in winter weather. Covers are easy to install and remove. For CX Hammer.



Left 98410240 Spike
Tray Black Curtain Kit
installed in CX Hammer.
Right, one of five covers
included in 96412822
Steel Manifold Covers
Assembly Kit.



Right, top to bottom:
98410271 Dome Red/
White LED Lamp Kit
installed in cab;
98760056 Interior Cab
Lighting Kit; 98411207
Espar Cab Heater Kit.



Contact Nordco Aftermarket Parts Sales & Service

Ph: 1-800-647-1724 7:30 a.m. - 5 p.m. Central Time Monday - Friday Fax: 414-766-2379 Email: Parts_Sales@nordco.com
Request an order or quotation: www.nordco.com Nordco Inc. 245 W. Forest Hill Ave. Oak Creek, Wisconsin 53154 USA