

Introducing the all new Nordco Website

Nordco has rolled out a completely redesigned website that provides comprehensive, easy-to-access information on our complete line of Maintenance-of-Way Machinery; Rail Inspection Products and Services; and Mobile Railcar Movers. The site features enhanced search functionality that makes it easier than ever to identify the MOW parts; repair and upgrade kits; spare parts packages and exchange components for your application. The site also features up-to-date machine operation, electrical, mechanical and hydraulic manuals for all current and most legacy machines; as well as a complete, searchable library of product literature and product support bulletins.

www.nordco.com

**WORKING
IN THE
DARK?**

Shine a light on your TRIPP cab interior

These kits from Nordco make it possible to enhance the lighting of your TRIPP Tie Exchanger cab, making it easier and more efficient to work in low light.

Dome Red/White LED Lamp Kit

Part number: 98410271

LED dome light provides two settings. White LEDs offer bright, even illumination that is superior to incandescent lighting. Switch to red LEDs when working in dark conditions. **The red light provides illumination without adversely affecting the operator's ability to see in low-light situations.** The kit includes 24V LED dome light, mounting plate, wire harness and installation instructions.



Interior Cab Lighting Kit

Part number: 98760056

The interior cab light provides an adjustable light source. The unit includes two 5-Watt halogen lights on swivel mounts. **Operators can direct the light to wherever it is needed.** The unit's heavy duty construction is designed to withstand machine vibration during work and travel. Includes light and installation instructions.



98760056 Interior Cab Lighting Kit.



Above 98410271 Dome Red /White LED Lamp Kit installed; installation components included with kit.

**WORKING
IN THE
SUN?**

Keep the sun's rays out with Nordco machine cab shade kits

Shade kits are available for a wide selection of Maintenance-of-Way Machines.

NEW FROM NORDCO

Help block heat and glare from the cab interior with these new shade kits. Transparent material makes it possible to still see outside the cab when shades are in down position. Nordco offers two types of shades. Kits include required mounting hardware. Shades included in each kit can also be purchased individually.

POLYESTER MESH SHADES

Durable, retractable poly mesh fabric shades are encased in powder coated steel housing. Shades feature a heavy duty recoil spring. Two sets of brackets provided to hold shades down in fully or partially retracted position. With the exception of the BAAM, these kits do not include front shades. They are available separately.

98413535 Standard Cab - CX Hammer and AK-67 Anchor Remover: (2) Rear, (2) Door, (2) Side Small

98760247 TRIPP Tie Exchanger: (2) Side, (2) Door, (1) Rear

98311032 Standard Cab - SP2R Spike Puller, AA2R Anchor Adjuster, RPI Ride-On Plate Inserter, Quad Drill, NSCA Spring Clip Applicator, and NVCAR V-Clip Applicator/Remover: (3) Rear, (4) Door & Side Small

98311033 Extended Cab - SP2R, AA2R, RPI, Quad Drill, NVCAR: (3) Rear, (4) Door & Side Small, (2) Side Large

98690045 BAAM Anchor Applicator: (1) Front, (1) Side Left, (1) Side Right, (1) Rear Fixed, (1) Door

98670019 Extended Cab - AK-67: (2) Door, (2) Side Small, (2) Side Large, (2) Rear

POLYESTER FILM SHADES

Polyester film features a micro-metal coating to help reflect heat and glare. Shade design is similar to a traditional spring-loaded window shade; internal ratchet makes it possible to retract and lock the shade into any position.

98413534 Standard Cab - CX Hammer and AK-67 Anchor Remover: (2) Front, (2) Door, (2) Rear

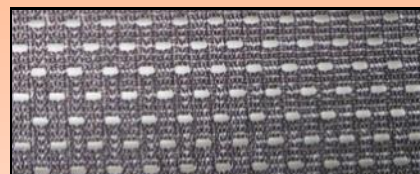
98760444 TRIPP: (1) Front, (1) Rear (2) Side, (2) Door

98311030 Standard Cab SP2R, Quad Drill, NSCA, NVCAR: (2) Front, (3) Rear, (4) Door & Side Small

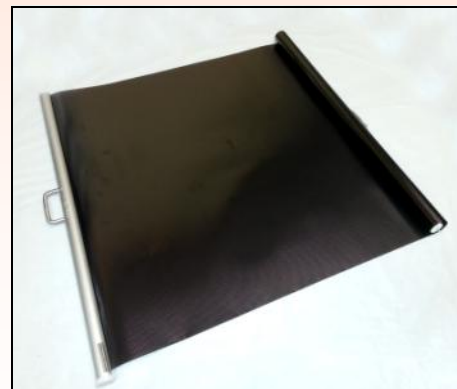
98311031 Extended Cab - SP2R, Quad Drill, NSCA, NVCAR: (3) Rear, (4) Door & Side Small, (2) Side Large

98720048 Standard Cab - AA2R, RPI: (1) Front, (2) Front LH & RH, (3) Rear, (4) Door & Side Small

98650034 Extended Cab - AA2R, RPI: (1) Front, (2) Front LH & RH, (3) Rear, (4) Door & Side Small, (2) Side Large



Above: Polyester Mesh Sun Shade; close-up of perforated mesh fabric.



Polyester Film Sun Shade.

Contact Nordco Aftermarket Parts Sales & Service

Ph: 1-800-647-1724 7:30 a.m. - 5 p.m. Central Time Monday - Friday Fax: 414-766-2379 Email: Parts_Sales@nordco.com
Request an order or quotation: www.nordco.com Nordco Inc. 245 W. Forest Hill Ave. Oak Creek, Wisconsin 53154 USA