



Product Support Bulletin 2010-020

245 W. Forest Hill Avenue
Oak Creek, WI 53154

Contact: Gary D. Van Deluyster, Service Manager – Phone: 800-445-9258 – Fax: 414-766-2260

Maintenance of Way ~ Work Equipment Bulletin

DATE: October 27, 2010

SUBJECT: Frame Tie-Down Reinforcing Kit – 98510092

RATING: **DIRECTIVE**
(Action is required)

ALERT
(Potential Problem)

INFORMATION
(Action is optional)

PRODUCT IMPROVEMENT
(Enhance Product)

MACHINE MODEL(S): NETP – Nordco Epoxy Tie Plugger

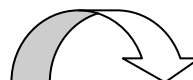
SERIAL NUMBER(S): 510001-510035

SUMMARY: There have been reports of cracks developing in the frames of some of these machines. The cracks occur at the junction of the Main Frame Rails and the Rectangular Tubes just in front of the chemical tanks. See Figure 1 on Page 2. These cracks can be caused by excessive force applied to the frame tie-down points. The 98510092 Frame Tie-Down Reinforcing Kit is available to reinforce the frame in the affected area.

OPERATIONAL IMPACT: Frame cracks could lead to weakening of the frame if not repaired.

ACTION: The 98510092 Frame Tie-Down Reinforcing Kit includes all parts required to properly repair and reinforce the area of the frame subject to cracking. Complete welding instructions are also included. See Figures 2, 3 and 4 on Page 3 and Figure 5 on Page 4. Follow all recommended Lock Out/Tag Out procedures before attempting to repair the frame. Both chemical tanks **MUST** be removed before repairing the frame.

WARRANTY: Kit 98510092 will be supplied under warranty for machines with s/n 510001-510035 until June 30, 2011. Please contact the Nordco Service Department at 800-445-9258 to order the 98510092 Frame Tie-Down Reinforcing Kit. One kit is required per machine.



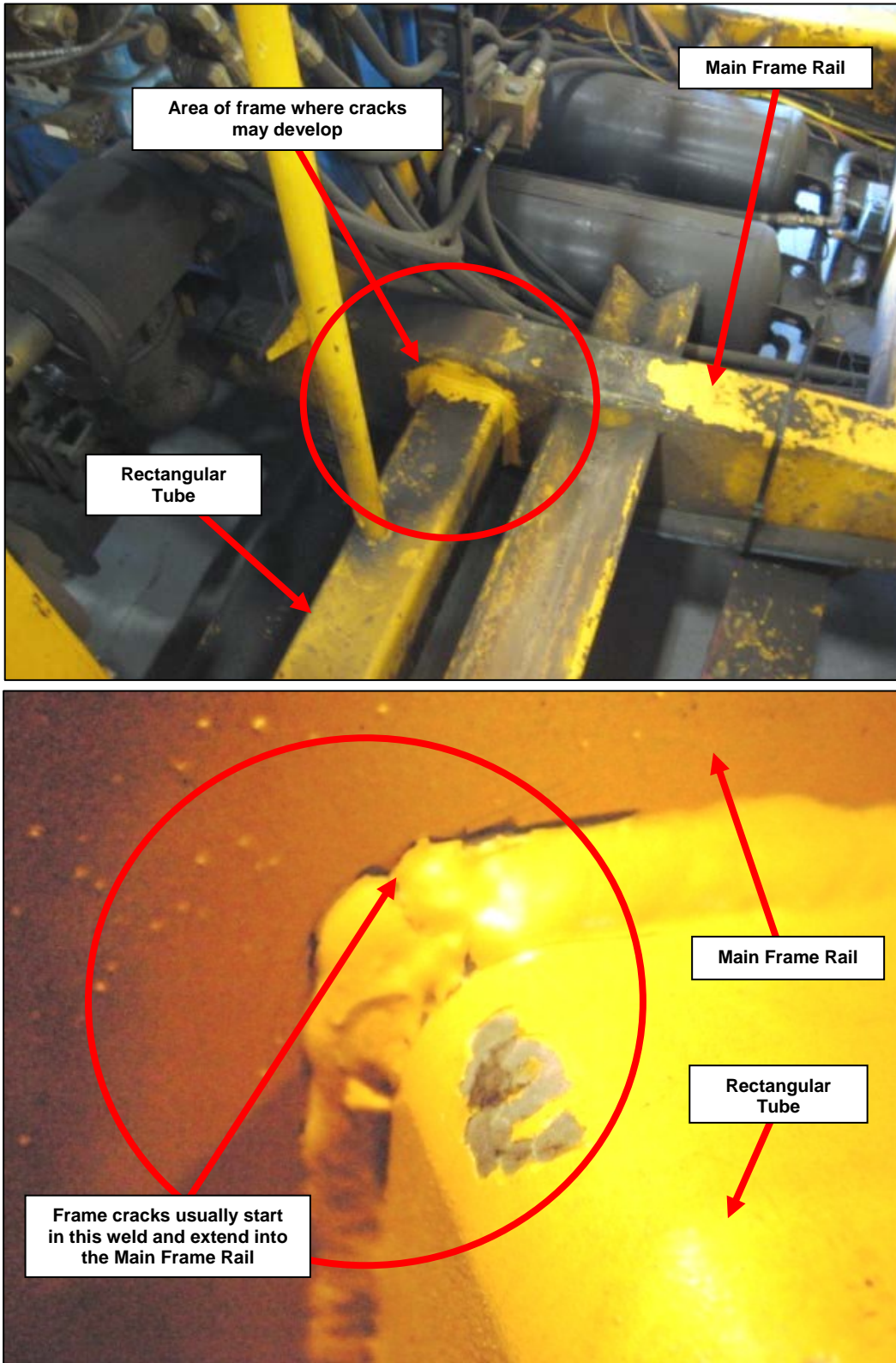


Figure 1
Typical frame crack (LH side shown)

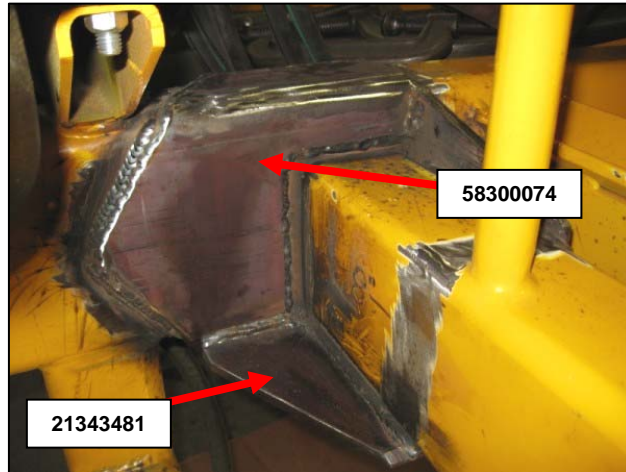


Figure 2
LH Tie-down Reinforcing Plate 21343481 and
LH Tie Doubler 58300074.



Figure 3
LH Tie-down Reinforcing Plate 56300071



Figure 4
Completed Frame Reinforcement

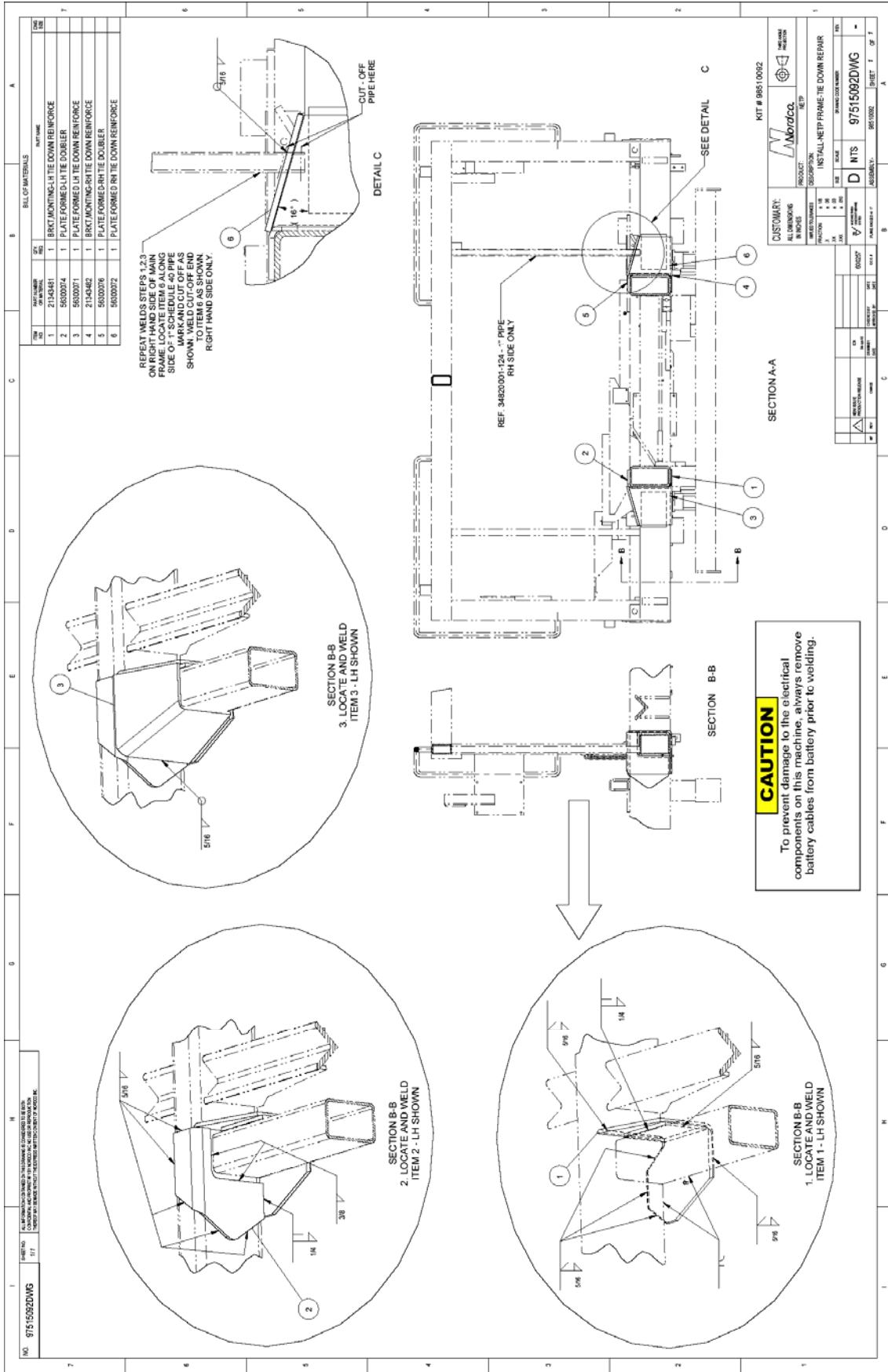


Figure 5
Welding Instructions