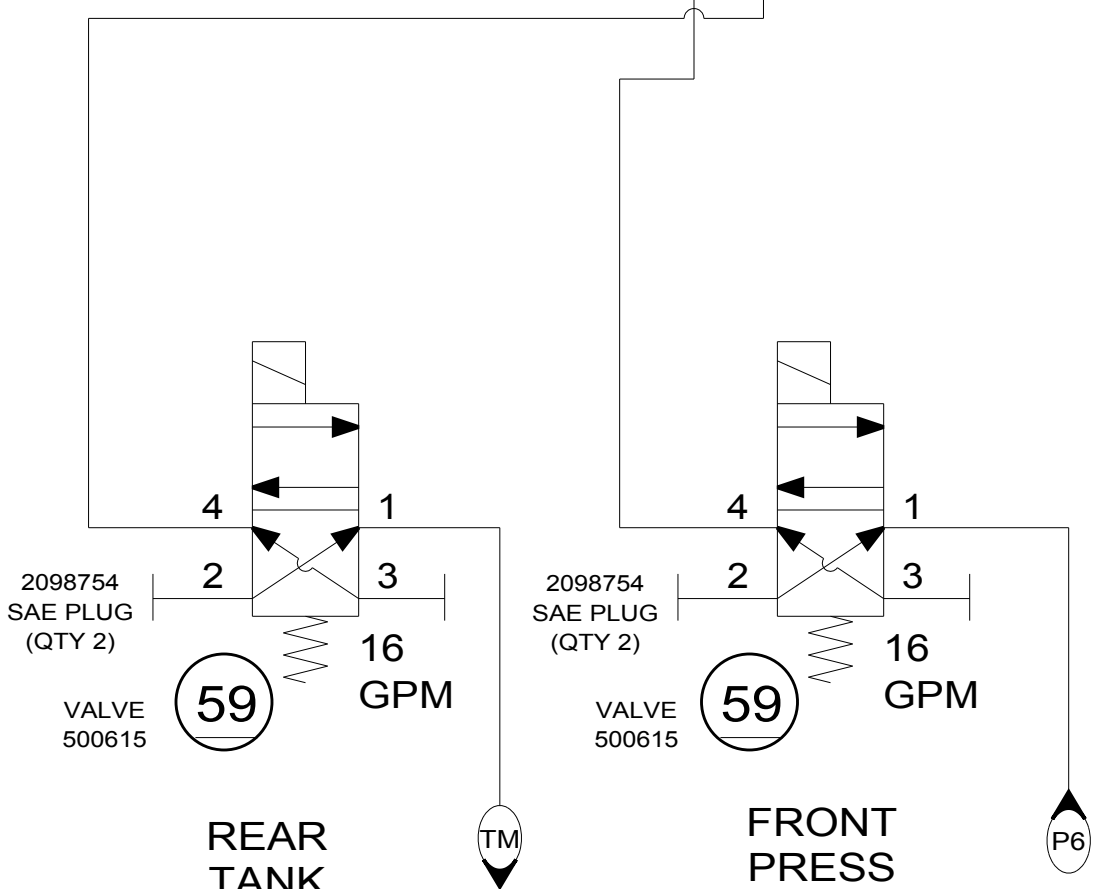
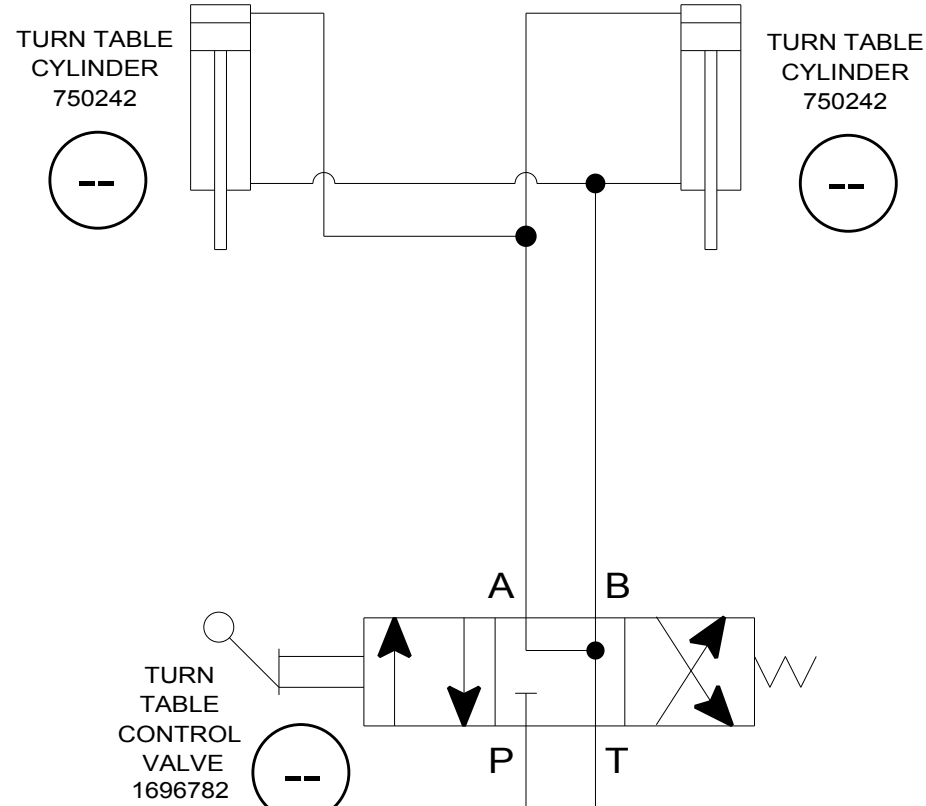
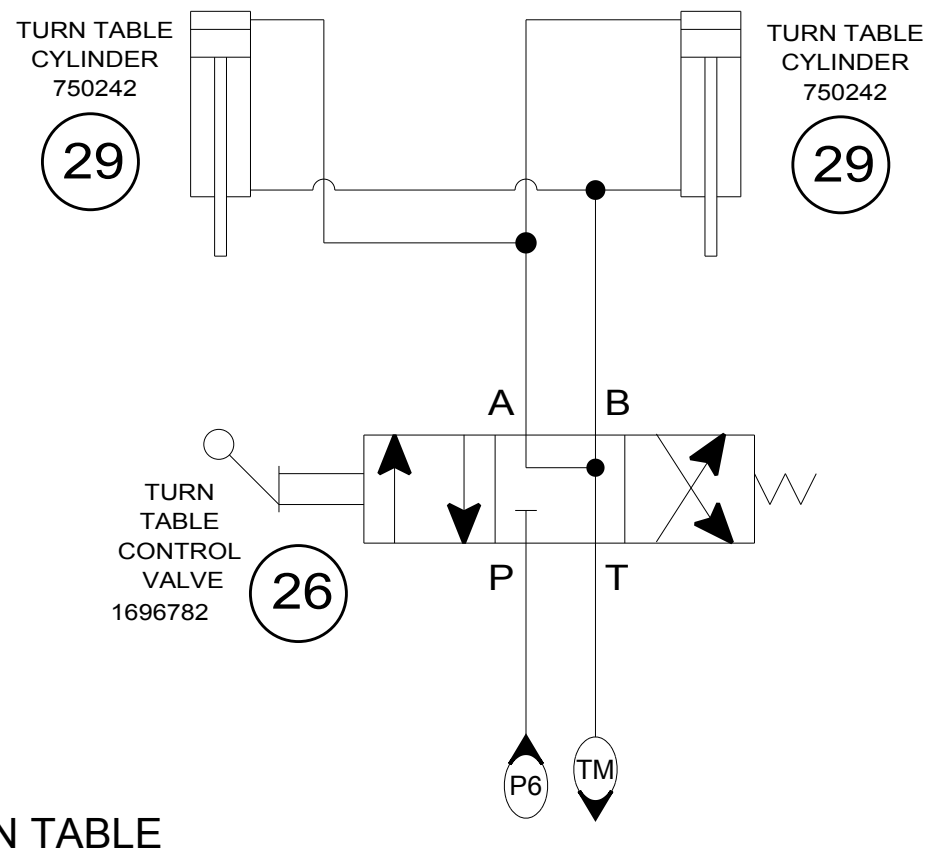
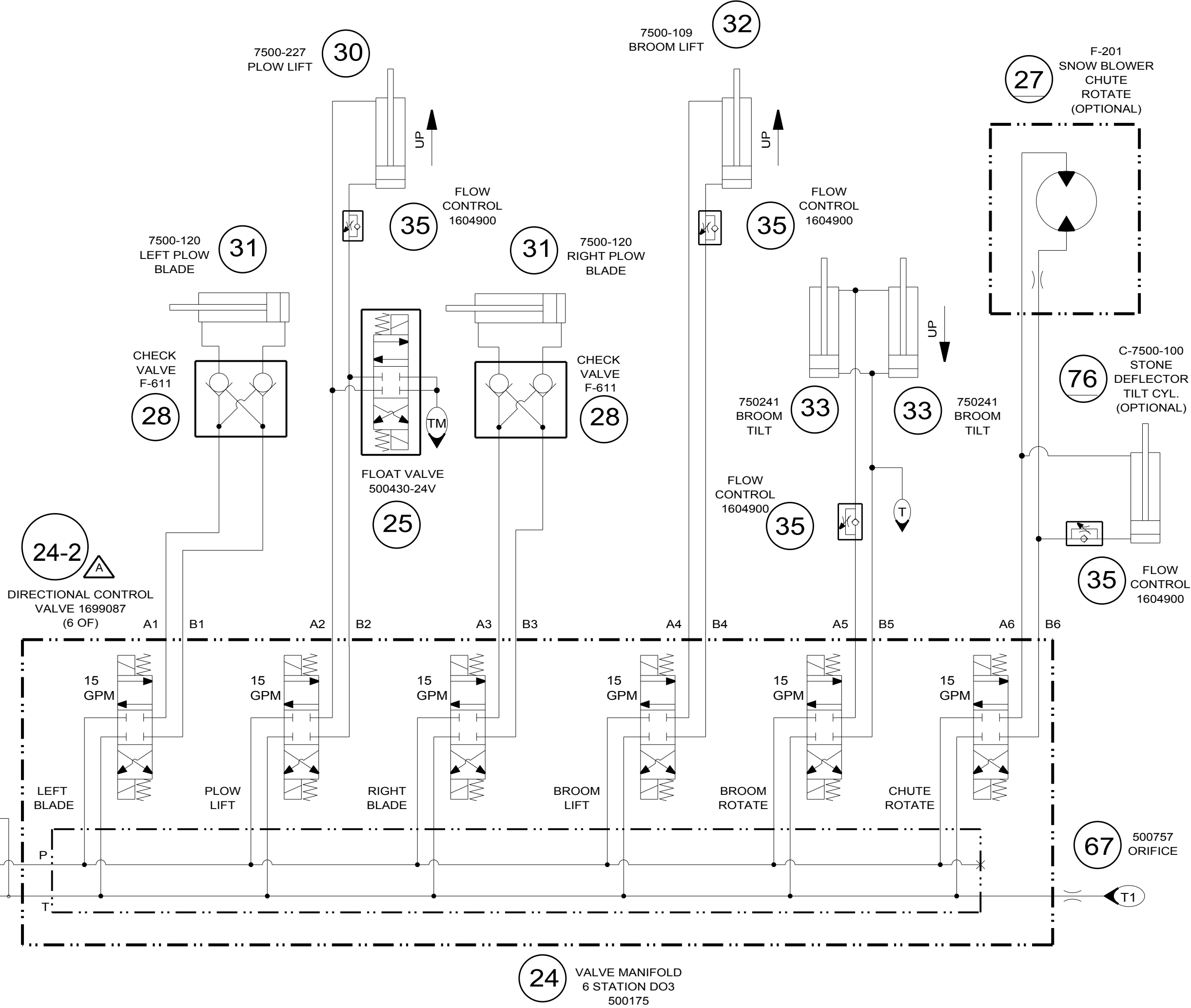
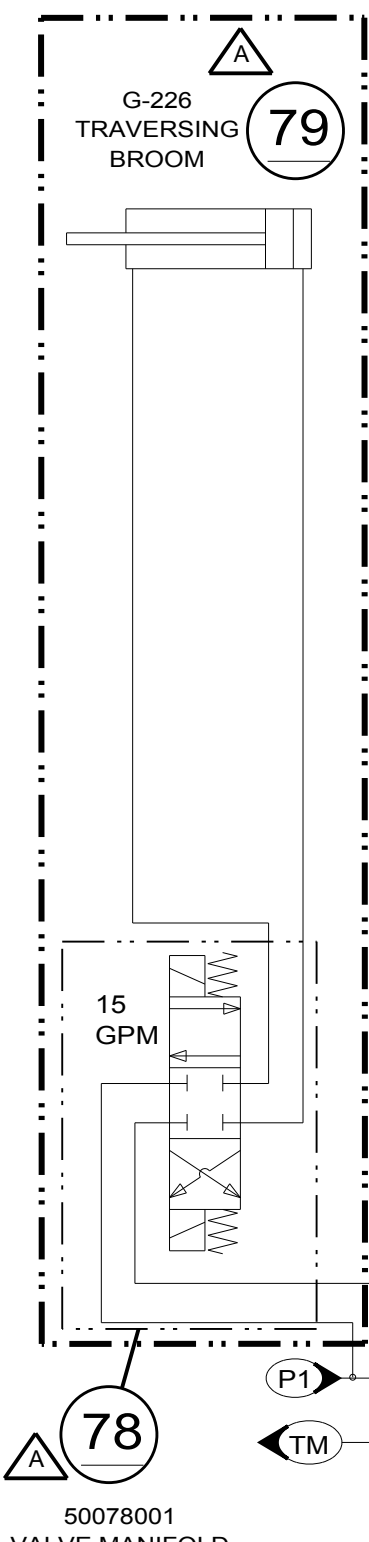


S/N800528-530
S/N800532 & UP

CUSTOMARY:		Nordco		THIRD ANGLE PROJECTION	
ALL DIMENSIONS IN INCHES		PRODUCT: M7			
IMPLIED TOLERANCES		DESCRIPTION: SCHEMATIC, HYDRAULIC			
FRACTION	± 1/8	SIZE	SCALE	DRAWING CODE NUMBER	REV.
.X	± .06	C	NTS	97800006DWG	C
.XX	± .03	ASSEMBLY:			
.XXX	± .010	SHEET 1 OF 12			
MACHINE FINISH UNLESS OTHERWISE STATED		PLANE ANGLES +/- 1°			



TRaversing Broom (OPTIONAL)

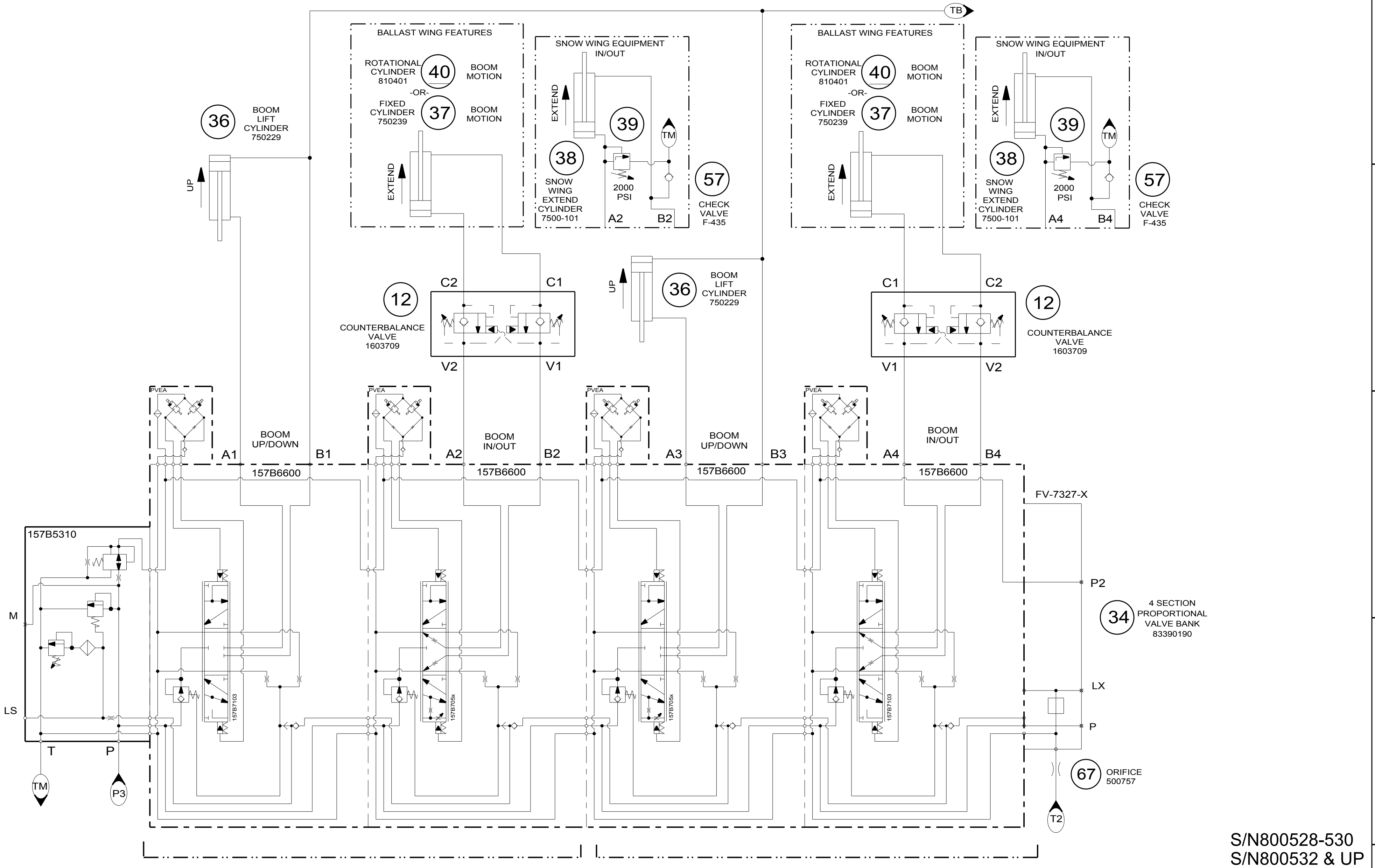


- SAME COMPONENT USED FOR STD TURNABLE (ABOVE)
- 00 OPTIONAL COMPONENTS UNDERLINED

S/N800528-530
S/N800532 & UP

CUSTOMARY:					
ALL DIMENSIONS IN INCHES		PRODUCT: M7			
IMPLIED TOLERANCES		DESCRIPTION: SCHEMATIC, HYDRAULIC			
FRACTION	± 1/8	SIZE	SCALE	DRAWING CODE NUMBER	REV.
.X	± .06	C	NTS	97800006DWG	C
.XX	± .03	ASSEMBLY:		SHEET 2	OF 12
.XXX	± .010				
		PLANE ANGLES ±.1°			

REVISION HISTORY
LOCATED ON LAST SHEET



LEFT HAND WING

RIGHT HAND WING

FIXED OR ROTATIONAL BALLAST WING

S/N800528-530
S/N800532 & UP

OPTIONAL FEATURES UNDERLINED

REVISION HISTORY LOCATED ON LAST SHEET

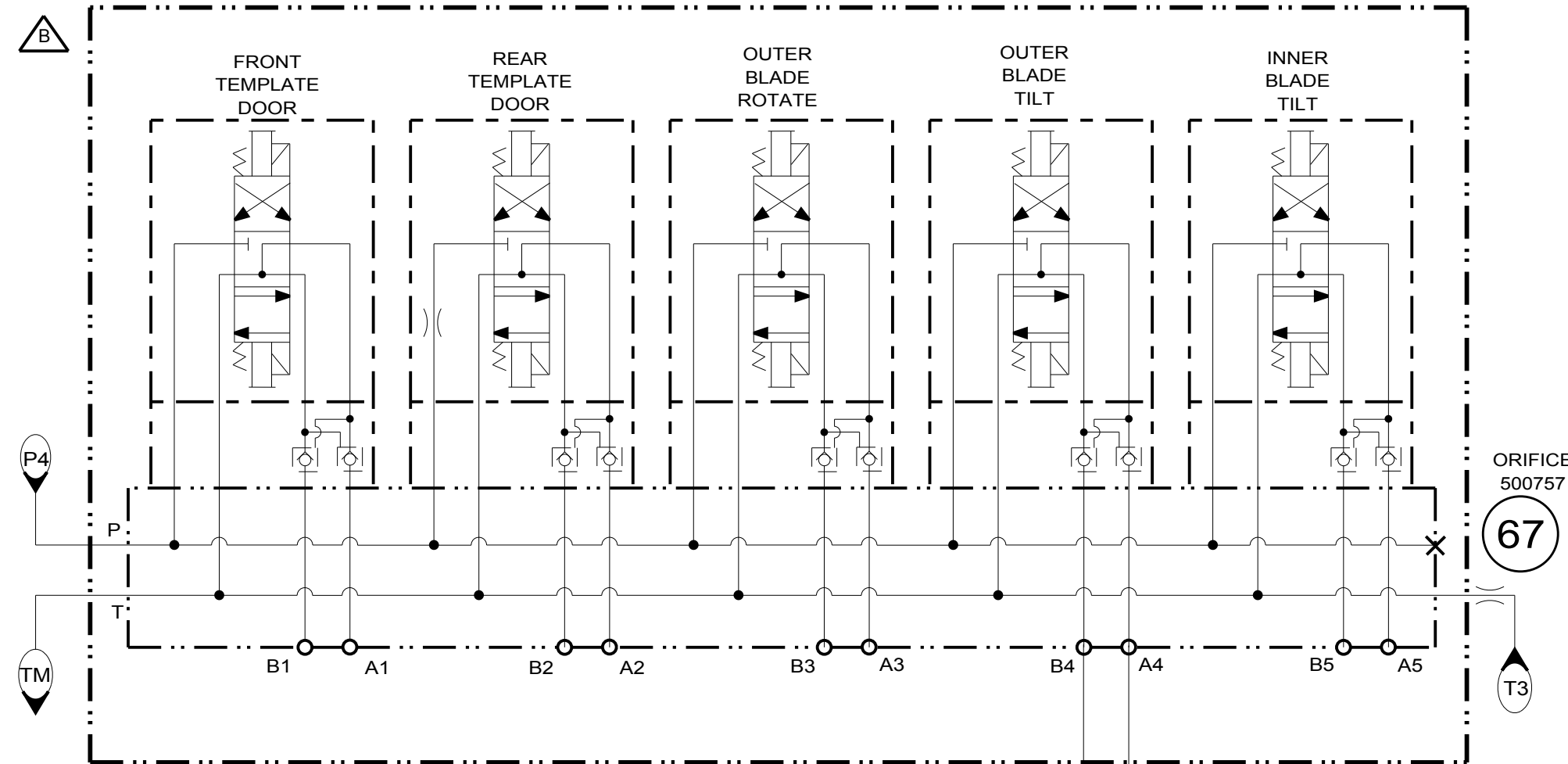
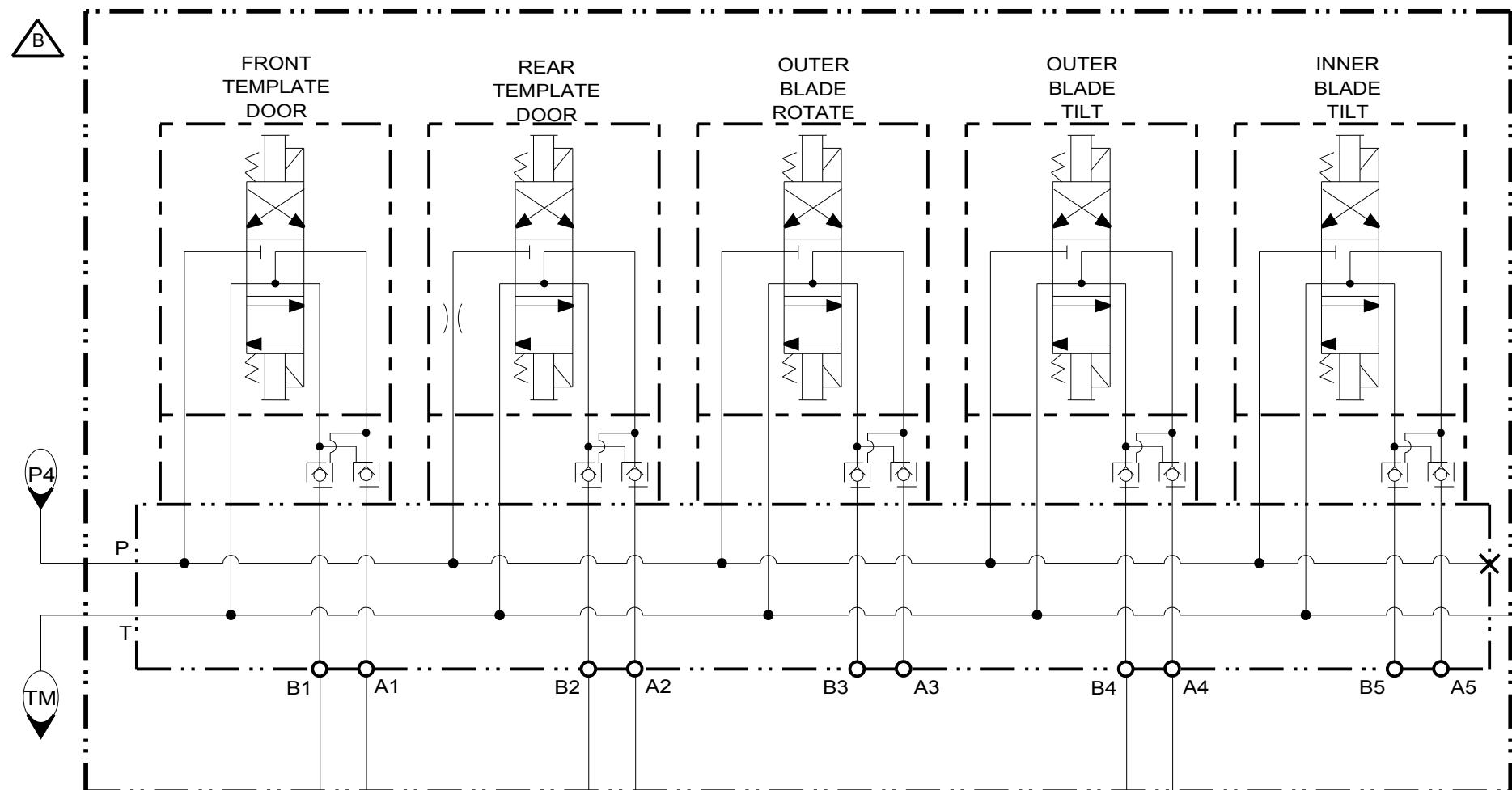
CUSTOMARY:					
ALL DIMENSIONS IN INCHES		PRODUCT: M7			
IMPLIED TOLERANCES		DESCRIPTION: SCHEMATIC, HYDRAULIC			
FRACTION	± 1/8	SIZE	SCALE	DRAWING CODE NUMBER	REV.
.X	± .06	C	NTS	97800006DWG	C
.XX	± .03	ASSEMBLY:		SHEET 3	OF 12
.XXX	± .010				
MACHINE FINISH UNLESS OTHERWISE STATED					
PLANE ANGLES +/- 1°					

BALLAST WINGS - FIXED RIGHT HAND 460297

SNOW WING EQUIPMENT 460375

41-2 DIRECTIONAL CONTROL VALVE 1699099 (5 OF)

41-2 DIRECTIONAL CONTROL VALVE 1699099 (5 OF)



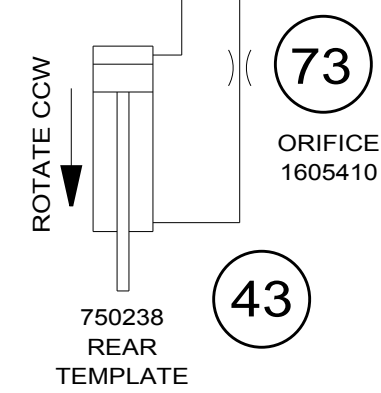
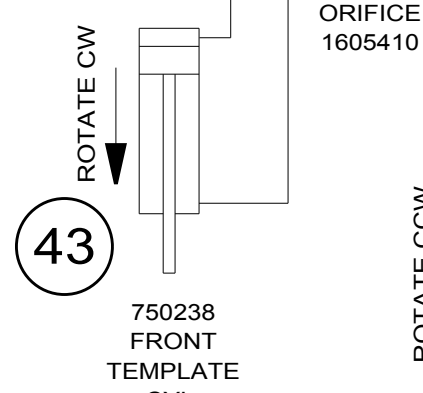
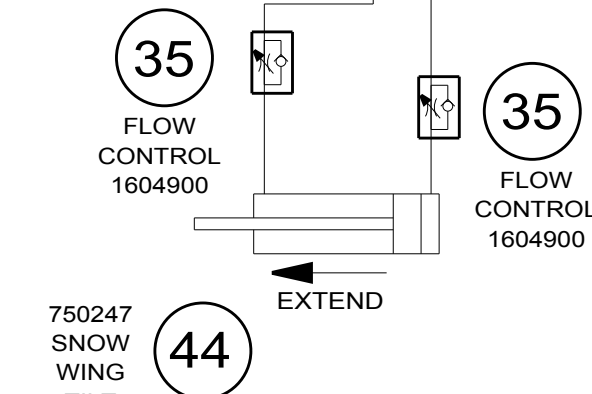
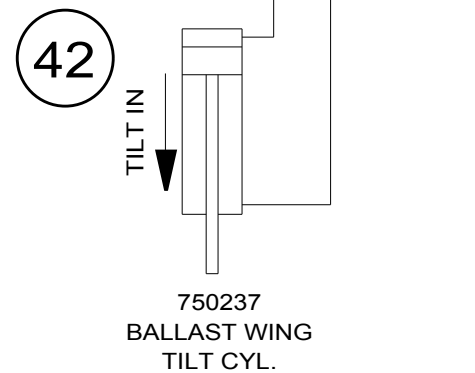
41 VALVE MANIFOLD 5 STATION DO3 50070025

41 VALVE MANIFOLD 5 STATION DO3 50070025

41-3 DUAL PILOT CHECK VALVE 1605990 (5 OF)

41-3 DUAL PILOT CHECK VALVE 1605990 (5 OF)

73 ORIFICE 1605410



S/N800528-530
S/N800532 & UP

CUSTOMARY: ALL DIMENSIONS IN INCHES				THIRD ANGLE PROJECTION	
IMPLIED TOLERANCES		PRODUCT: M7			
FRACTION	± 1/8	DESCRIPTION: SCHEMATIC, HYDRAULIC			
.X	± .06	SIZE	SCALE	DRAWING CODE NUMBER	REV.
.XX	± .03	C	NTS	97800006DWG	C
.XXX	± .010	ASSEMBLY:		SHEET 4 OF 12	
MACHINE FINISH UNLESS OTHERWISE STATED		PLANE ANGLES +/- 1°			

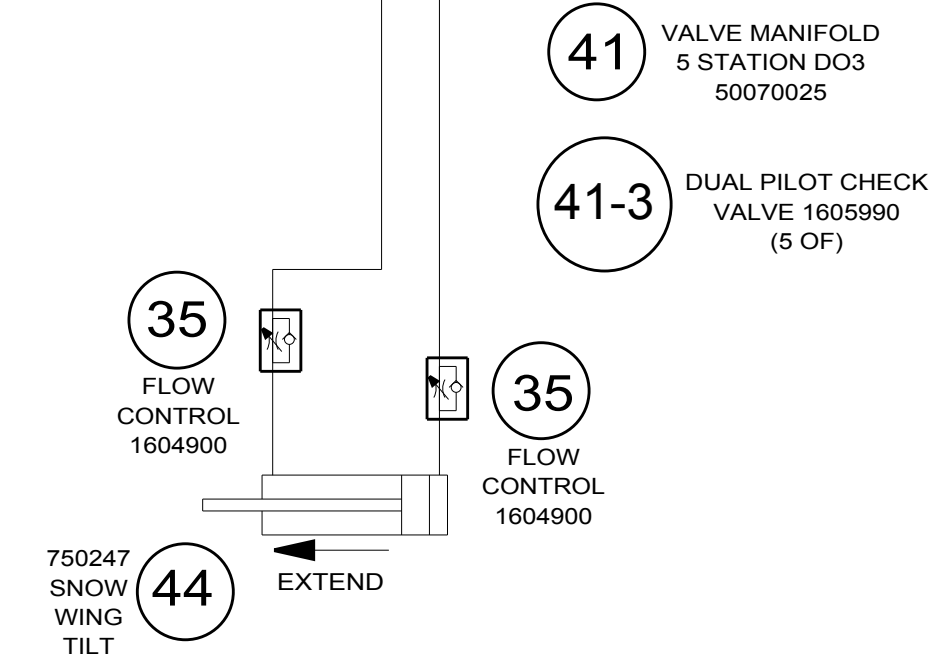
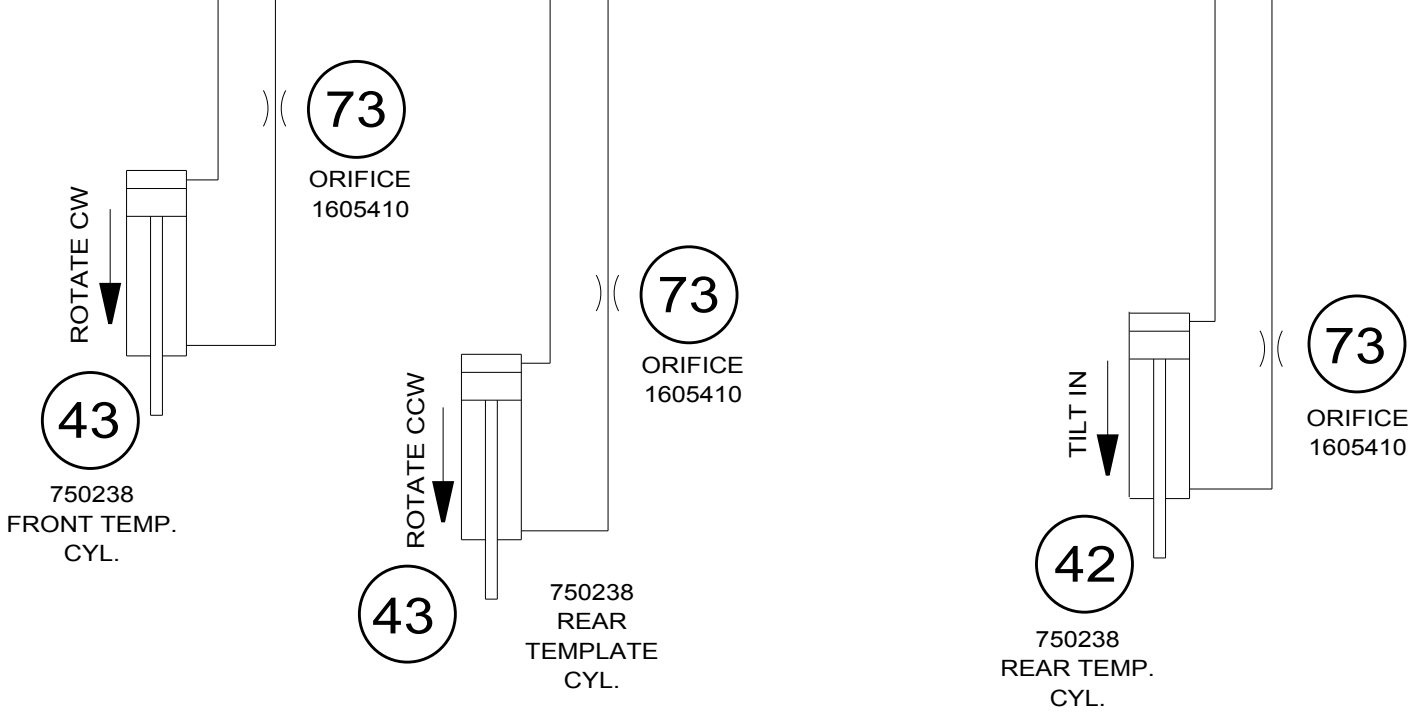
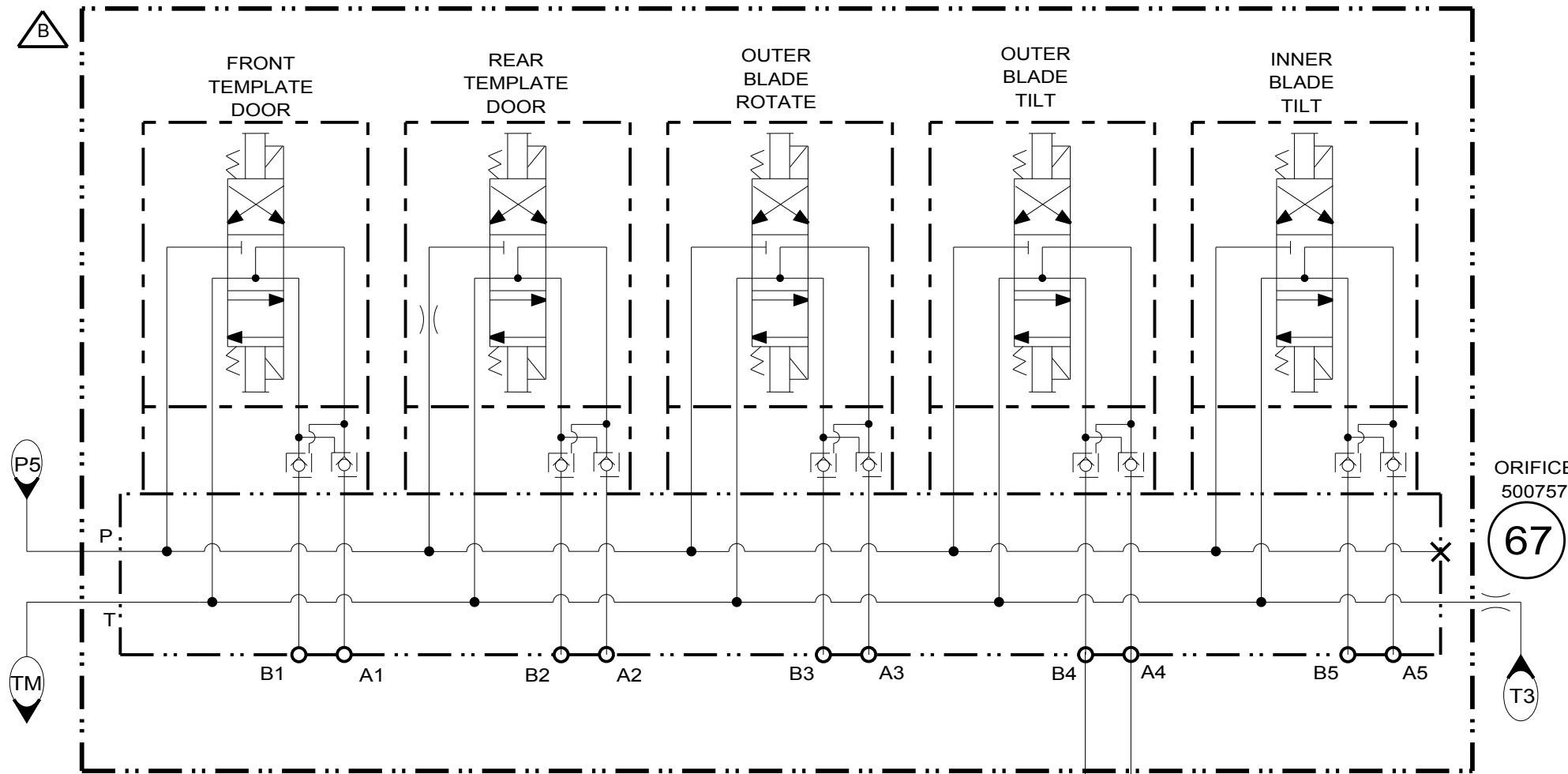
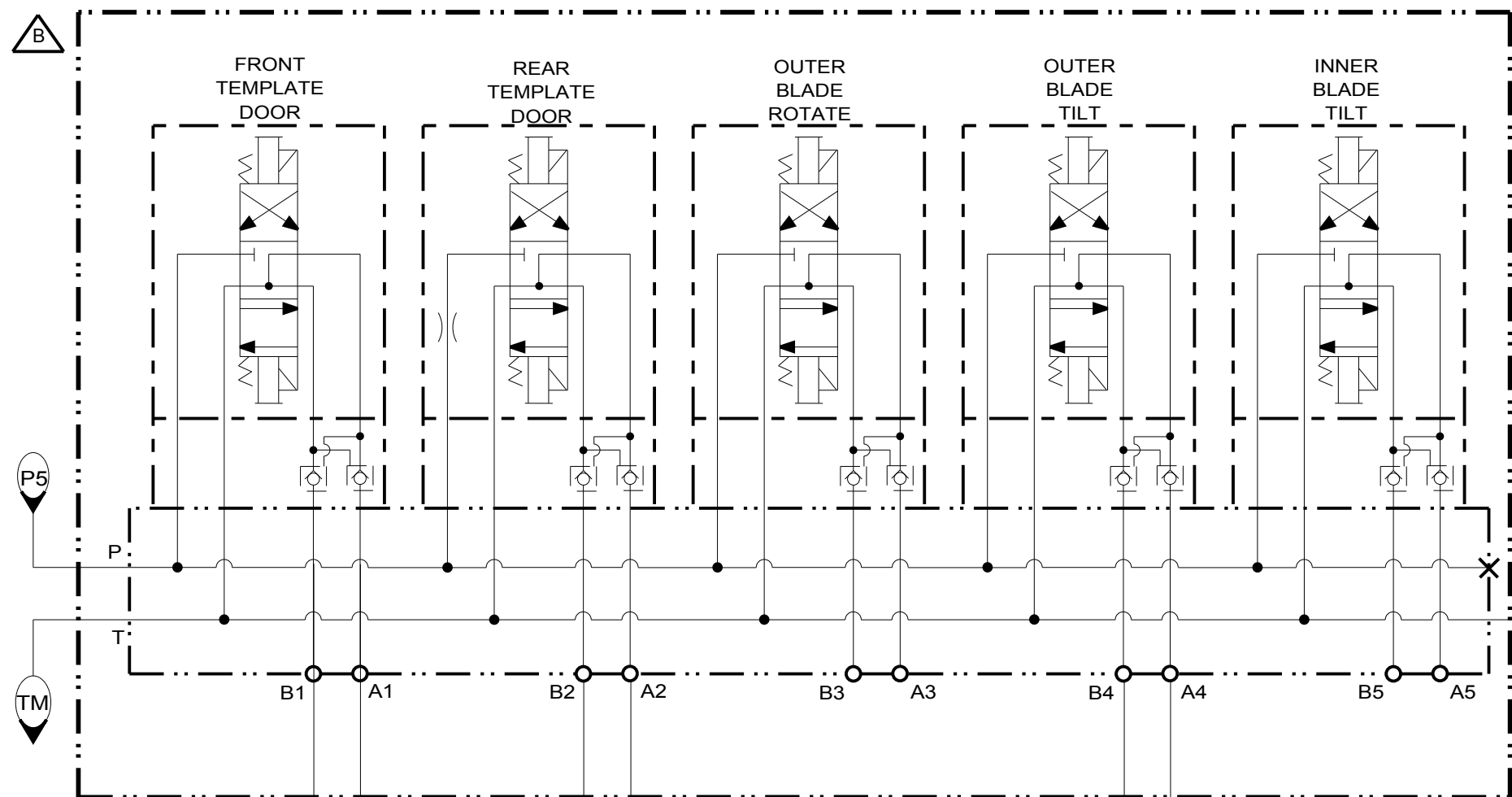
REVISION HISTORY
LOCATED ON LAST SHEET

BALLAST WING - FIXED LEFT HAND 460299

SNOW WING EQUIPMENT 460372

41-2 DIRECTIONAL CONTROL VALVE 1699099 (5 OF)

41-2 DIRECTIONAL CONTROL VALVE 1699099 (5 OF)



41 VALVE MANIFOLD 5 STATION DO3 50070025
41-3 DUAL PILOT CHECK VALVE 1605990 (5 OF)

41 VALVE MANIFOLD 5 STATION DO3 50070025
41-3 DUAL PILOT CHECK VALVE 1605990 (5 OF)

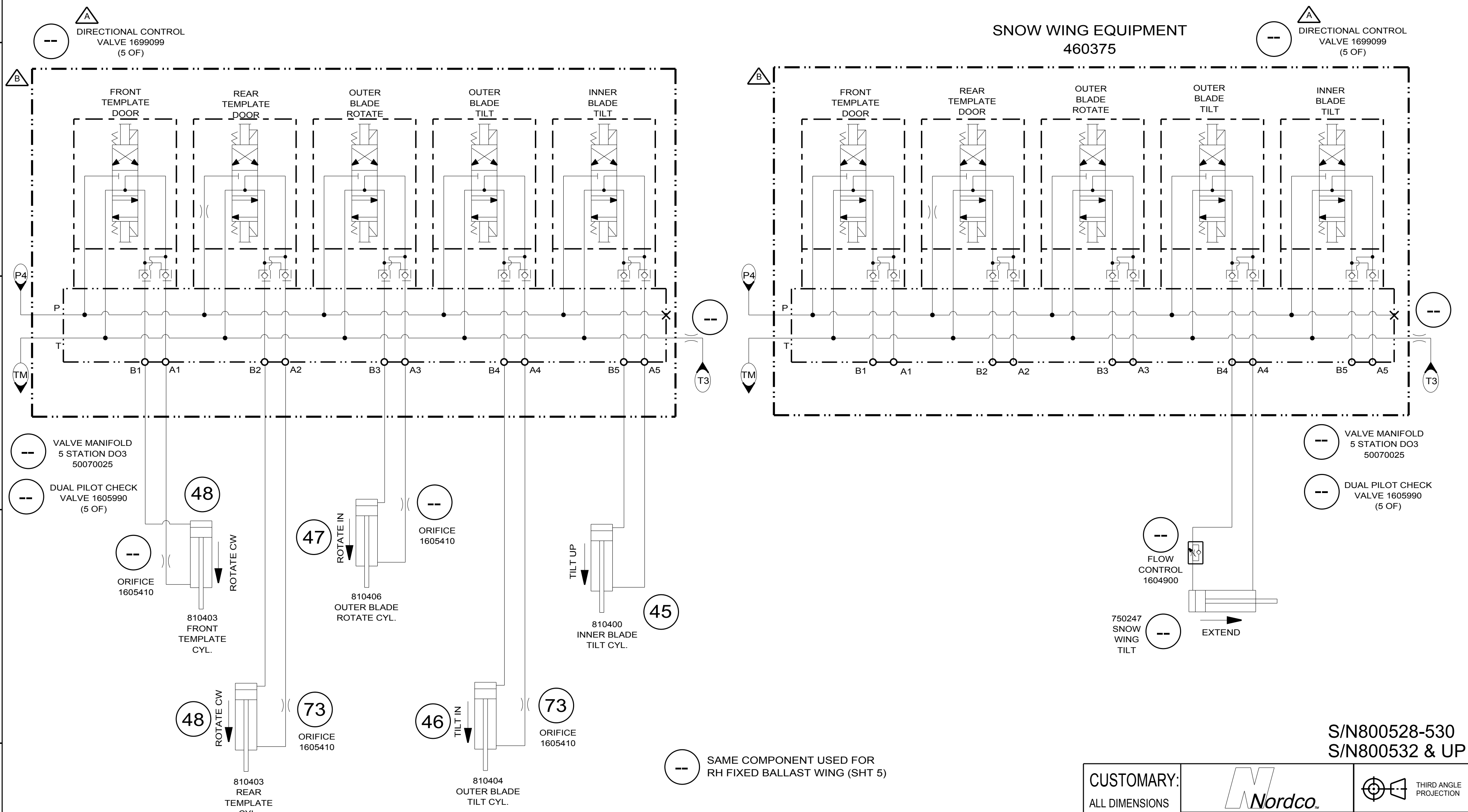
S/N800528-530
S/N800532 & UP

CUSTOMARY: ALL DIMENSIONS IN INCHES					
IMPLIED TOLERANCES		PRODUCT: M7			
FRACTION	± 1/8	DESCRIPTION: SCHEMATIC, HYDRAULIC			
.X	± .06	SIZE	SCALE	DRAWING CODE NUMBER	REV.
.XX	± .03	C	NTS	97800006DWG	C
.XXX	± .010	ASSEMBLY:		SHEET 5 OF 12	
MACHINE FINISH UNLESS OTHERWISE STATED		PLANE ANGLES +/- 1°			

REVISION HISTORY
LOCATED ON LAST SHEET

BALLAST WING - ROTATIONAL RIGHT HAND 460386

SNOW WING EQUIPMENT 460375



--- SAME COMPONENT USED FOR RH FIXED BALLAST WING (SHT 5)

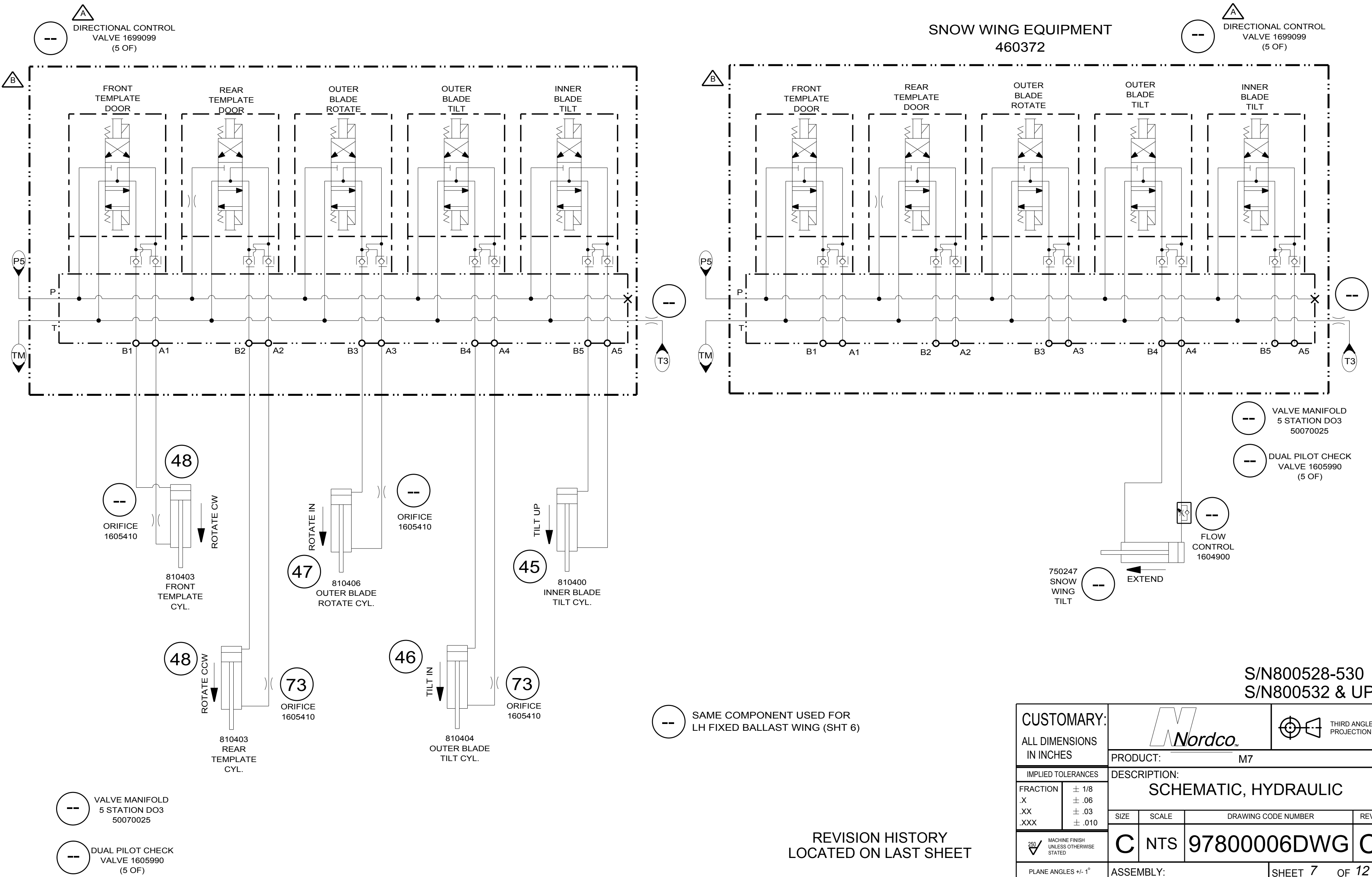
S/N800528-530
S/N800532 & UP

CUSTOMARY:					
ALL DIMENSIONS IN INCHES		PRODUCT: M7			
IMPLIED TOLERANCES		DESCRIPTION: SCHEMATIC, HYDRAULIC			
FRACTION	± 1/8	SIZE	SCALE	DRAWING CODE NUMBER	REV.
.X	± .06	C	NTS	97800006DWG	C
.XX	± .03	ASSEMBLY:		SHEET 6	OF 12
.XXX	± .010				
MACHINE FINISH UNLESS OTHERWISE STATED					
PLANE ANGLES +/- 1°					

REVISION HISTORY
LOCATED ON LAST SHEET

BALLAST WING - ROTATIONAL LEFT HAND 460387

SNOW WING EQUIPMENT 460372



--- SAME COMPONENT USED FOR LH FIXED BALLAST WING (SHT 6)

REVISION HISTORY
LOCATED ON LAST SHEET

S/N800528-530
S/N800532 & UP

CUSTOMARY:					
ALL DIMENSIONS IN INCHES		PRODUCT: M7			
IMPLIED TOLERANCES		DESCRIPTION: SCHEMATIC, HYDRAULIC			
FRACTION	± 1/8	SIZE	SCALE	DRAWING CODE NUMBER	REV.
.X	± .06	C	NTS	97800006DWG	C
.XX	± .03	ASSEMBLY:		SHEET 7	OF 12
.XXX	± .010				
MACHINE FINISH UNLESS OTHERWISE STATED					
PLANE ANGLES +/- 1°					

OPTIONAL
SNOW WINGS W/POWER LOCK

OPTION 460424
TURN TABLE POWER LOCK



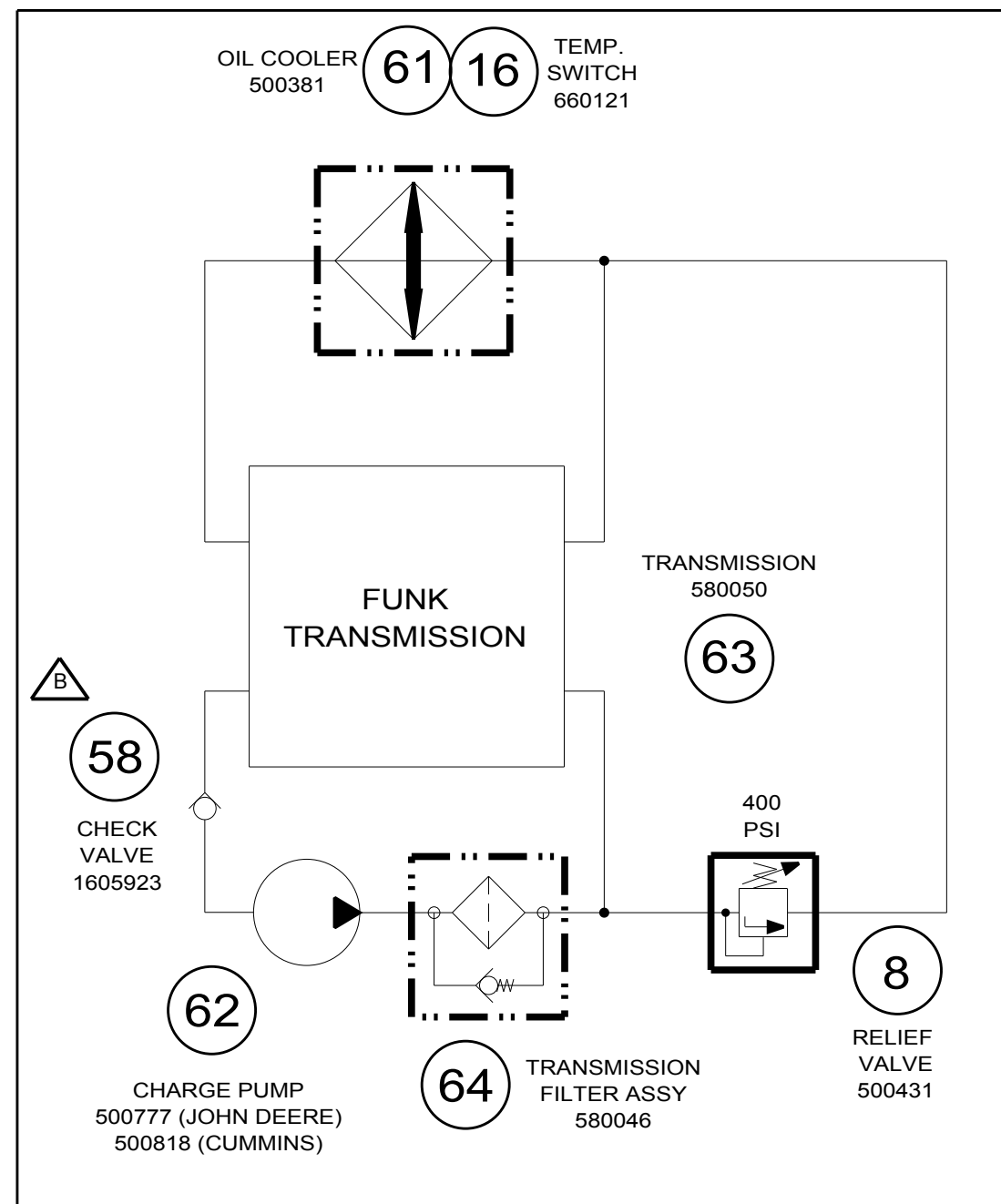
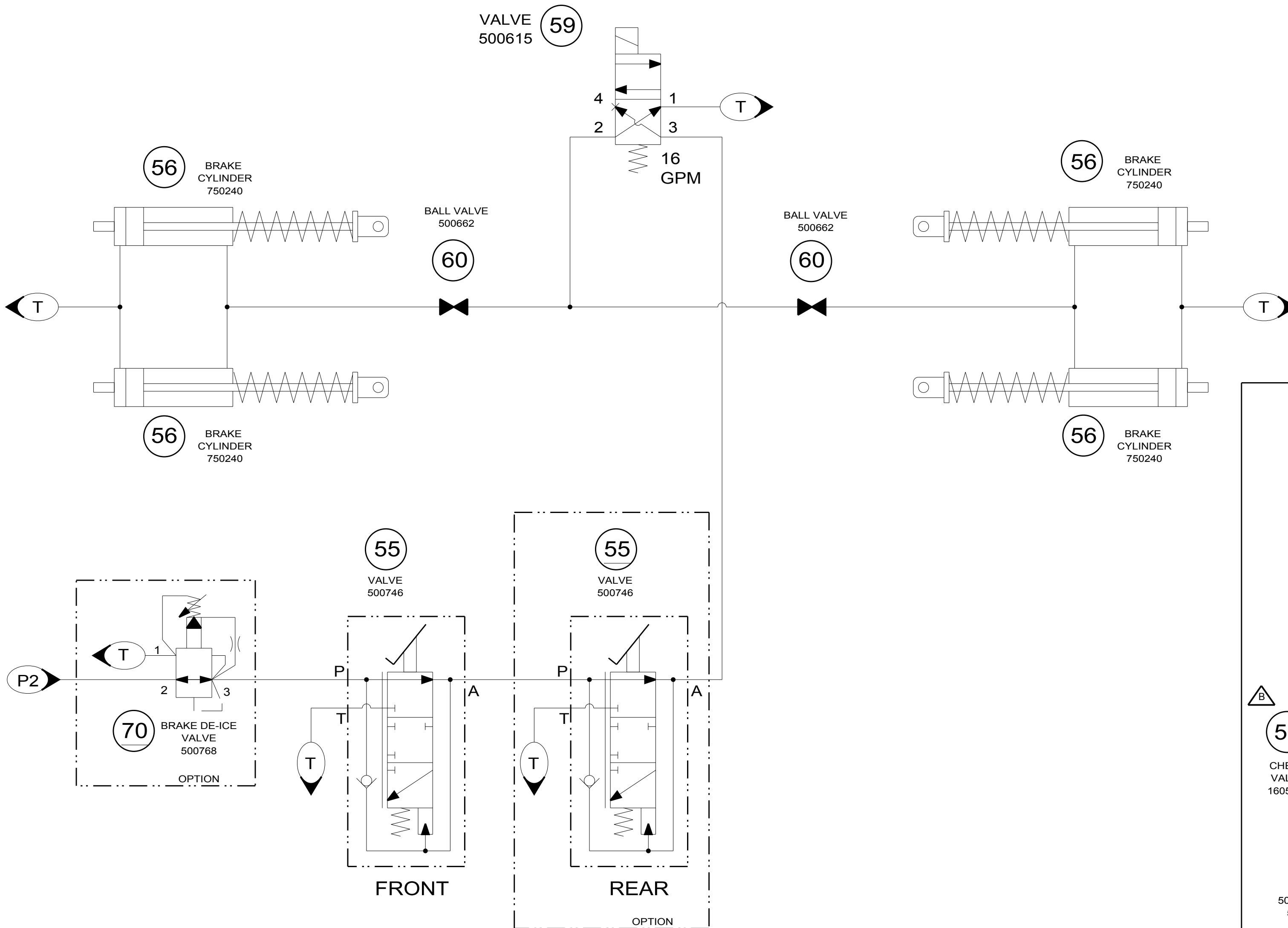
00 OPTIONAL COMPONENTS UNDERLINED

S/N800528-530
S/N800532 & UP

CUSTOMARY:					
ALL DIMENSIONS IN INCHES		PRODUCT: M7			
IMPLIED TOLERANCES		DESCRIPTION: SCHEMATIC, HYDRAULIC			
FRACTION	± 1/8	SIZE	SCALE	DRAWING CODE NUMBER	REV.
.X	± .06	C	NTS	97800006DWG	C
.XX	± .03	ASSEMBLY:		SHEET 8	OF 12
.XXX	± .010				
MACHINE FINISH UNLESS OTHERWISE STATED					
PLANE ANGLES +/- 1°					

REVISION HISTORY LOCATED ON LAST SHEET

BRAKE SYSTEM

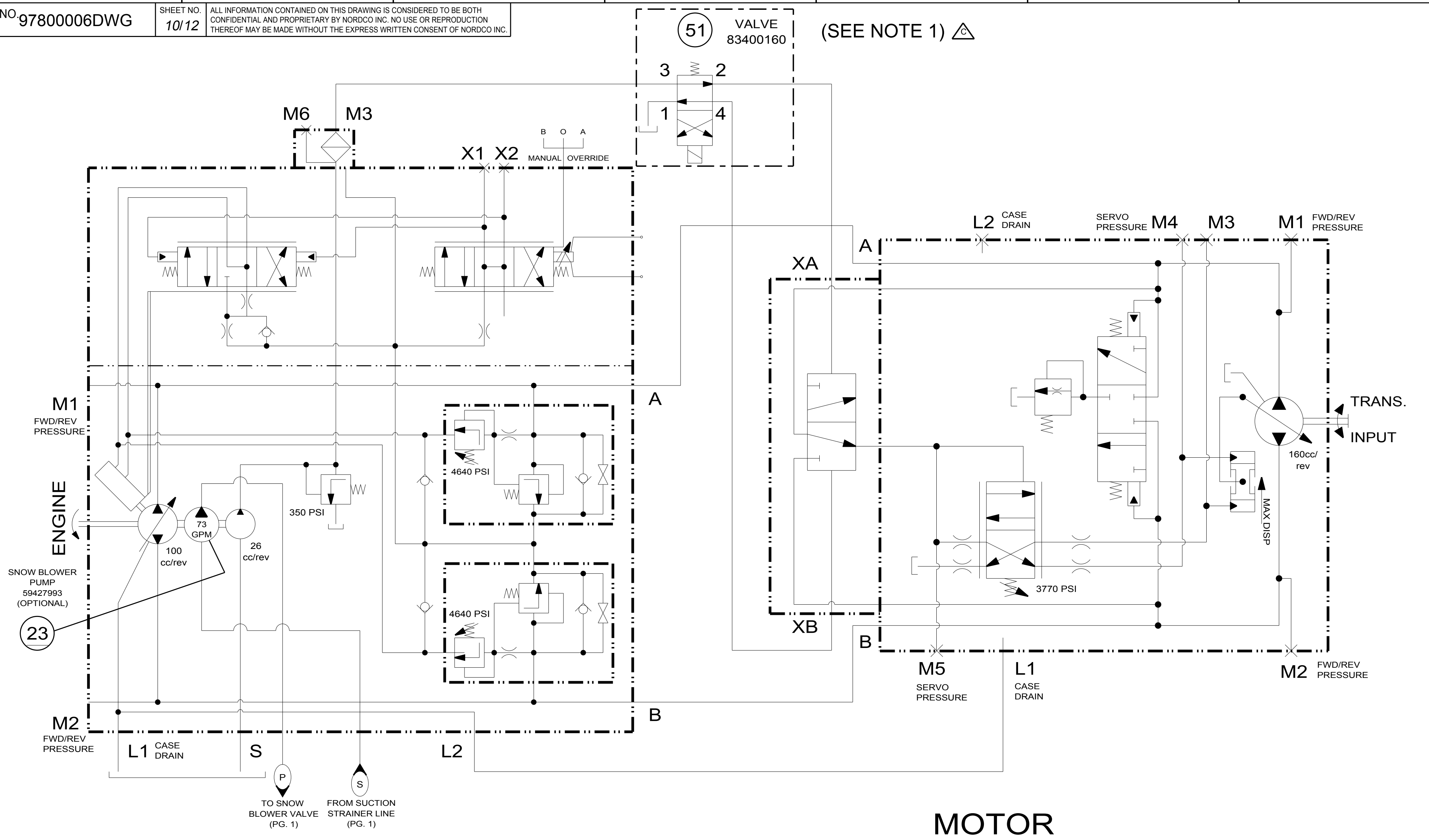


00 OPTIONAL COMPONENTS UNDERLINED

S/N800528-530
S/N800532 & UP

CUSTOMARY: ALL DIMENSIONS IN INCHES				THIRD ANGLE PROJECTION	
IMPLIED TOLERANCES		PRODUCT: M7			
DESCRIPTION:		SCHEMATIC, HYDRAULIC			
FRACTION	± 1/8	SIZE	SCALE	DRAWING CODE NUMBER	REV.
.X	± .06	C	NTS	97800006DWG	C
.XX	± .03	ASSEMBLY:		SHEET 9	OF 12
.XXX	± .010				
MACHINE FINISH UNLESS OTHERWISE STATED					
PLANE ANGLES +/- 1°					

REVISION HISTORY LOCATED ON LAST SHEET



PUMP SERIES 90
CLOCKWISE (CW) ROTATION
59427985

(65)

- NOTES:
- ITEM 51, VALVE 83400160, NOT REQUIRED FOR S/N800562 & UP.
 - ITEM 66, DRIVE MOTOR, P/N 500648 UP TO S/N800561 AND P/N 50230104 FOR S/N800562 & UP.

MOTOR

(SEE NOTE 2)

(66)

S/N800528-530
S/N800532 & UP

(00) OPTIONAL COMPONENTS UNDERLINED

REVISION HISTORY LOCATED ON LAST SHEET

CUSTOMARY:					
ALL DIMENSIONS IN INCHES		PRODUCT: M7			
IMPLIED TOLERANCES		DESCRIPTION: SCHEMATIC, HYDRAULIC			
FRACTION	± 1/8	SIZE	SCALE	DRAWING CODE NUMBER	REV.
.X	± .06	C	NTS	97800006DWG	C
.XX	± .03	ASSEMBLY:		SHEET 10 OF 12	
.XXX	± .010				
MACHINE FINISH UNLESS OTHERWISE STATED					
PLANE ANGLES +/- 1°					

ITEM NO.	NORDCO PART NO.	DESCRIPTION	STD QTY.	OPT QTY.	PAGE
01	500624	HYDRAULIC OIL TANK	1	-	1
02	F-438	BALL VALVE	1	-	
03	500619	SUCTION STRAINER	1	-	
03-1	500092	ELEMENT			
04	500625	SUCTION MANIFOLD	1	-	
05	59427987	IMPLEMENT PUMP	1	-	
06	54218493	UNLOADING VALVE	2	-	
06-1	25534036	COIL, DESTROKE			
07	1607046	BALL VALVE	1	-	
08	500431	RELIEF VALVE	3	-	1,9
09	98800020	EMERGENCY PUMP	1	-	1
09-1	520247	CABLE, EMERGENCY PUMP			
10	F-566	CHECK VALVE	1	-	
11	3880259	PRESSURE FILTER	1	-	
11-1	5193970	SENDING UNIT			
11-2	3894289	ELEMENT			
12	1603709	VALVE, DUAL COUNTERBALANCE	2	-	3
13	-	-	-	-	
14	500775	RETURN MANIFOLD	1	-	1
15	500385	HYDRAULIC OIL COOLER	1	-	
15-1	500383	OIL COOLER			
15-2	500384	FAN, OIL COOLER			
16	660121	TEMPERATURE SWITCH	2	-	1,9
16-1	96391051	ASSY, CONTROLLER KIT			
17	3880323	RETURN FILTER	2	-	1
17-1	5193970	SENDING UNIT			
17-2	3894289	ELEMENT			
18	500428	BROOM VALVE	1	-	
18-1	500629	VALVE, DIR CTRL OPEN CENTER			
19	500481	BROOM VALVE SUBPLATE	1	-	
20	50230035	HYD MOTOR 29.3 CU.IN/REV	1	-	
21	50078577	SNOW BLOWER VALVE ASSY	-	1	
21-1	50080046	BLOCK, MANIFOLD D08			
21-2	1699390	VALVE, DIRECTIONAL CONTROL D08			
21-3	1699391	VALVE, DIRECTIONAL CONTROL D03			
21-4	1623568	VALVE,VARIABLE RELIEF 500-3000PSI			
21-5	2783331	1/2-13UNC X 2.50 LG S.H.C.S.			
22	500406	PRESSURE REDUCING VALVE	1	-	
22-1	505002	VALVE, PRES RED CARTRIDGE			
23	59427993	SNOW BLOWER PUMP	-	1	10
24	500175	6 STATION D03 VALVE MANIFOLD	1	-	2
24-1	500173	MANIFOLD, 6 STATION D03			
24-2	1699087	VALVE, SOLENOID DIRECTIONAL			
25	500430-24V	FLOAT VALVE	1	-	
25-1	500651	SOLENOID FOR NACHI VALVE			
26	1696782	TURN TABLE CONTROL VALVE	1	-	
27	F-201	CHUTE ROTATE	-	1	
28	F-611	CHECK VALVE	2	-	
29	750242	TURN TABLE CYLINDERS	2	-	
29-1	SK-750242	SEAL KIT			
30	7500-227	PLOW LIFT	1	-	
30-1	SK-7500-227	SEAL KIT 500799			
31	7500-120	PLOW BLADE CYLINDER	2	-	
31-1	SK-7500-120	SEAL KIT 500799			
32	7500-109	BROOM LIFT CYLINDER	1	-	
32-1	SK-7500-109	SEAL KIT 500798			
33	750241	BROOM TILT CYLINDER	2	-	
33-1	SK-750241	SEAL KIT 500799			
34	83390190	4 SECTION PROPORTIONAL VALVE	1	-	3
35	1604900	FLOW CONTROL VALVE	8	-	2,4-5
36	750229	BOOM LIFT CYLINDER	2	-	3
36-1	SK-750229	SEAL KIT	-	-	
37	750239	BOOM MOTION CYLINDER	2	-	
37-1	SK-750239	SEAL KIT 500799	-	-	

ITEM NO.	NORDCO PART NO.	DESCRIPTION	STD QTY.	OPT QTY.	PAGE
38	7500-101	SNOW WING EXTEND CYLINDER	2	-	3
38-1	SK-7500-101	SEAL KIT 500801	-	-	
39	F-640	QUICK ACTING DUMP VALVE	2	-	
40	810401	BOOM MOTION CYLINDER	-	2	
40-1	SK-810401	SEAL KIT 500799			
41	50070025	5 STATION D03 VALVE MANIFOLD	4	-	4-5
41-1	500171	MANIFOLD, 5 STATION D03			
41-2	1699099	VALVE, SOLENOID DIRECTIONAL			
41-3	1605990	VALVE, PILOT OPERATED CHECK	10	10	
42	750237	BALLAST WING TILT CYL	2	-	
42-1	7SK-50237	SEAL KIT 500798			
43	750238	TEMPLATE DOOR CYLINDER	4	-	
43-1	SK-750238	SEAL KIT 500799			
44	750247	SNOW WING TILT CYLINDER	2	-	
44-1	SK-750247	SEAL KIT 500799			
45	810400	INNER DOOR TILT CYLINDER	-	2	6-7
45-1	SK-810400	SEAL KIT 500798			
46	810404	OUTER DOOR TILT CYLINDER	-	2	
46-1	SK-810404	SEAL KIT 500798			
47	810406	OUTER DOOR ROTATE CYLINDER	-	2	
47-1	SK-810406	SEAL KIT 500798			
48	810403	TEMPLATE DOOR CYLINDER	-	4	
48-1	SK810403	SEAL KIT 500799			
49	-	-	-	-	
49-1	-	-	-	-	
50	-	-	-	-	
51	SEE NOTE 1	2 POSITION VALVE	3	3	8,10
52	750236	SNOW WING LOCK-UP CYLINDER	-	2	8
53	750234	FRONT PLOW LOCK-UP CYLINDER	1	-	
54	750235	BROOM LOCK-UP CYLINDER	1	-	
55	500746	BRAKE VALVE, FOOT PEDAL	1	1	9
56	750240	SINGLE ACTING BRAKE CYLINDER	4	-	
57	F-435	CHECK VALVE	2	-	3
58	1605923	CHECK VALVE 1-1/4	1	-	9
59	500615	VALVE, SOLENOID 2-POSITION	1	2	2,9
59-1	500779	VALVE, 2-POSITION 4-WAYS			
59-2	520277	COIL, 24VDC DIN 43650			
60	500662	LOCKING BALL VALVE 3/4 NPT	2	-	9
61	500381	TRANSMISSION OIL COOLER	1	-	
61-1	500382	FAN, OIL COOLER			
62	500777	CHARGE PUMP COMES W/ENGINE	1	-	
63	580050	FUNK TRANSMISSION	1	-	
63-1	580056	SENDER, TEMP TRANS FUNK			
63-2	580057	GAUGE, TEMP TRANS FUNK			
64	580046	TRANSMISSION FILTER ASSY	1	-	
64-1	580047	BASE, FILTER			
64-2	580048	ELEMENT FILTER			
65	59427985	SERIES 90 PUMP	1	-	10
65-1	500072	PUMP FILTER			
66	SEE NOTE 2	MOTOR	1	-	
67	500757	ORIFICE 0.093	6	1	2-5
68	1605895	CHECK VALVE 100 PSI	1	-	1
69	500028	MOTOR, WHEEL HYD OMVW800	1	-	
70	500768	VALVE, REDUCING WITH HANDKNOB	-	1	9
71	50078570	MANIFOLD TWO STATION HEADER	1	-	1
72	50079050	MANIFOLD HEADER 6 PORTS	1	-	
73	1605410	ORIFICE, .06	14	-	4-7
74	750248	CYLINDER, TURN TABLE LOCK	-	2	8
75	-	-	-	-	
76	C-7500-100	CHECK VALVE 125 PSI	-	1	2
77	500627	BROOM PUMP	1	-	1
78	50078001	MANIFOLD 1 STATION D03	-	1	
78-1	50080060	BLOCK, MANIFOLD	-	1	
78-2	1699087	VALVE, DIRECTIONAL CONTROL	-	1	
79	G-226	CYLINDER, TRAVERSING BROOM	-	1	

NOTES:
 1. ITEM 51, VALVE 83400160, NOT REQUIRED FOR S/N800562 & UP.
 2. ITEM 66, DRIVE MOTOR, P/N 500648 UP TO S/N800561 AND P/N 50230104 ON S/N800562 & UP.

REVISION HISTORY S/N800528-530
 LOCATED ON LAST SHEET S/N800532 & UP

CUSTOMARY:					
ALL DIMENSIONS IN INCHES		PRODUCT: M7			
IMPLIED TOLERANCES		DESCRIPTION: SCHEMATIC, HYDRAULIC			
FRACTION	± 1/8	SIZE	SCALE	DRAWING CODE NUMBER	REV.
.X	± .06	C	NTS	97800006DWG	C
.XX	± .03	ASSEMBLY: SHEET 11 OF 12			
.XXX	± .010				
MACHINE FINISH UNLESS OTHERWISE STATED					
PLANE ANGLES +/- 1°					

NO.97800006DWG

SHEET NO.
12/12




ALL INFORMATION CONTAINED ON THIS DRAWING IS CONSIDERED TO BE BOTH CONFIDENTIAL AND PROPRIETARY BY NORDCO INC. NO USE OR REPRODUCTION THEREOF MAY BE MADE WITHOUT THE EXPRESS WRITTEN CONSENT OF NORDCO INC.

ECO	600576	REV -	
DRAWN BY:	CHECKED BY:	APPROVED BY:	
LCP			
01/06/12			
SHEET	CHANGE		
ALL	NEW ISSUE		

ECO	601301	REV C	
DRAWN BY:	CHECKED BY:	APPROVED BY:	
CP			
26-MAY-14			
SHEET	CHANGE		
1	ITEM 20, MOTOR 50230035 WAS F-233.		
10	NOTES 1 & 2 ADDED. ITEM 51, VALVE 83400160, NOTE 1 ADDED FOR USAGE EXPLANATION. ITEM 66, DRIVE MOTOR, NOTE 2 ADDED FOR USAGE EXPLANATION.		
11	ITEM 20, 50230035 WAS F-233 AND "HYD MOTOR 29.3CU.IN/REV" WAS "BROOM & BLOWER MOTOR". NOTES 1 & 2 ADDED FOR ITEMS 51 & 66. ITEM 51, 83400160 REPLACED WITH "SEE NOTE 1". ITEM 66, 500648 REPLACED WITH "SEE NOTE 2" AND "SERIES 51-1" REMOVED FROM DESCRIPTION.		

ECO	600688	REV A	
DRAWN BY:	CHECKED BY:	APPROVED BY:	
SWA	CP		
05-24-12	5/25/12		
SHEET	CHANGE		
2	OPTION TRAVERSING BROOM ADDED ITEM 24-2 VALVE WAS 500172		
4	41-2 VALVE 1699099 WAS 500172		
5	41-2 VALVE 1699099 WAS 500172		
6	41-2 VALVE 1699099 WAS 500172		
7	41-2 VALVE 1699099 WAS 500172		
11	ITEM 24-2 1699087 WAS 500172 ITEMS 78,78-1,78-2 & 79 ADDED		

ECO	601085	REV B	
DRAWN BY:	CHECKED BY:	APPROVED BY:	
LCP			
8/19/13			
SHEET	CHANGE		
4	REVERSED THE FUNCTION CALLOUTS ON THE MANIFOLDS		
5	REVERSED THE FUNCTION CALLOUTS ON THE MANIFOLDS		
6	REVERSED THE FUNCTION CALLOUTS ON THE MANIFOLDS		
7	REVERSED THE FUNCTION CALLOUTS ON THE MANIFOLDS		
9	ADDED ITEM 58 TO TRANSMISSION CIRCUIT		
11	ADDED ITEM 58 TO MATERIALS LIST		

CUSTOMARY:				 THIRD ANGLE PROJECTION	
ALL DIMENSIONS IN INCHES		PRODUCT: M7			
IMPLIED TOLERANCES		DESCRIPTION: SCHEMATIC, HYDRAULIC			
FRACTION	± 1/8	SIZE	SCALE	DRAWING CODE NUMBER	REV.
.X	± .06	C	NTS	97800006DWG	C
.XX	± .03				
.XXX	± .010				
 MACHINE FINISH UNLESS OTHERWISE STATED		ASSEMBLY: SHEET 12 OF 12			
PLANE ANGLES +/- 1°					