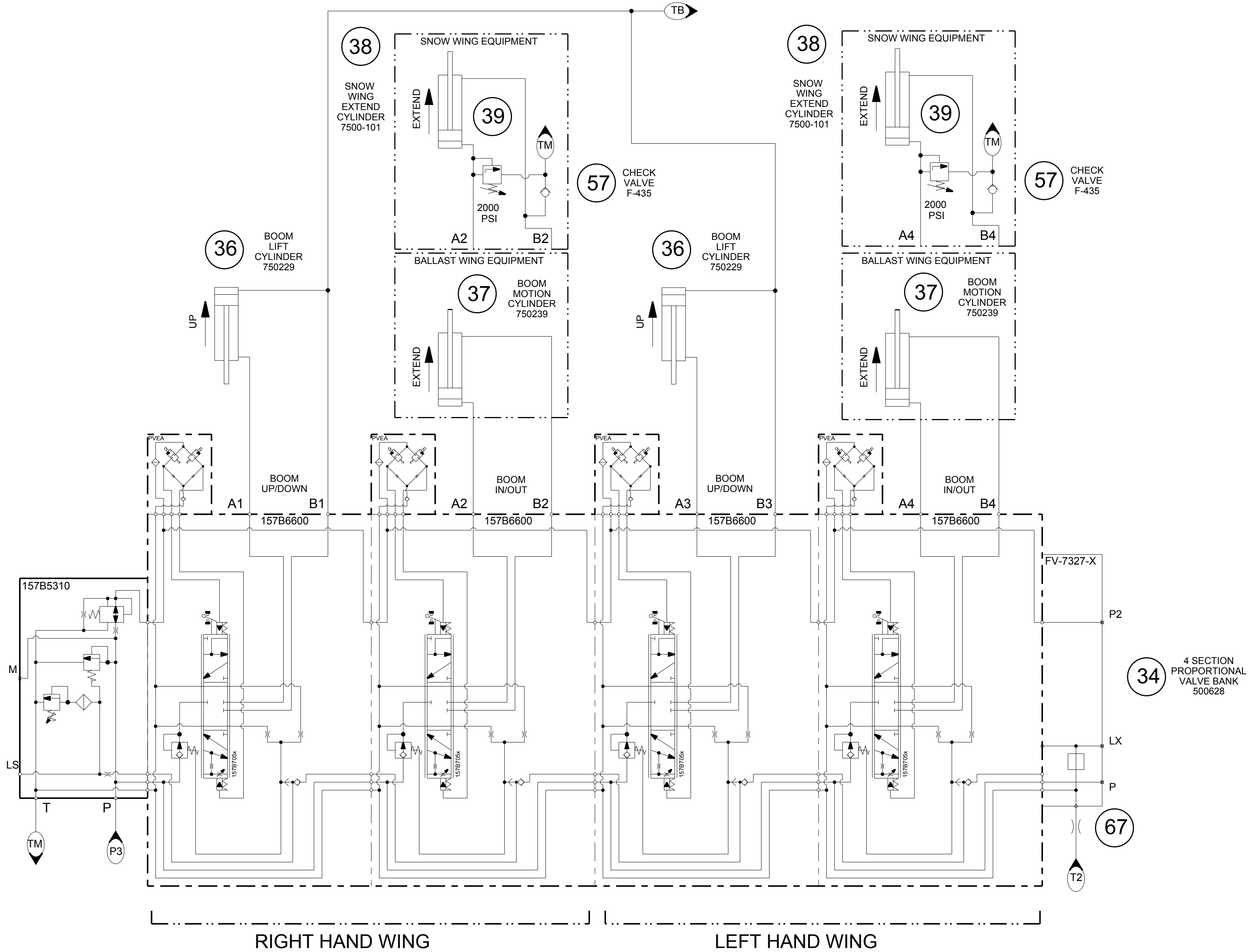


S/N 800400 & UP

CUSTOMARY:					
ALL DIMENSIONS IN INCHES		PRODUCT: M7			
IMPLIED TOLERANCES		DESCRIPTION: SCHEMATIC, HYDRAULIC			
FRACTION	± 1/8	SIZE	SCALE	DRAWING CODE NUMBER	REV.
.X	± .06	C	NTS	97800003DWG	A
.XX	± .03	ASSEMBLY:		SHEET 2	OF 11
.XXX	± .010				
MACHINE FINISH UNLESS OTHERWISE STATED					
PLANE ANGLES ±.1°					

REVISION HISTORY LOCATED ON LAST SHEET



RIGHT HAND WING

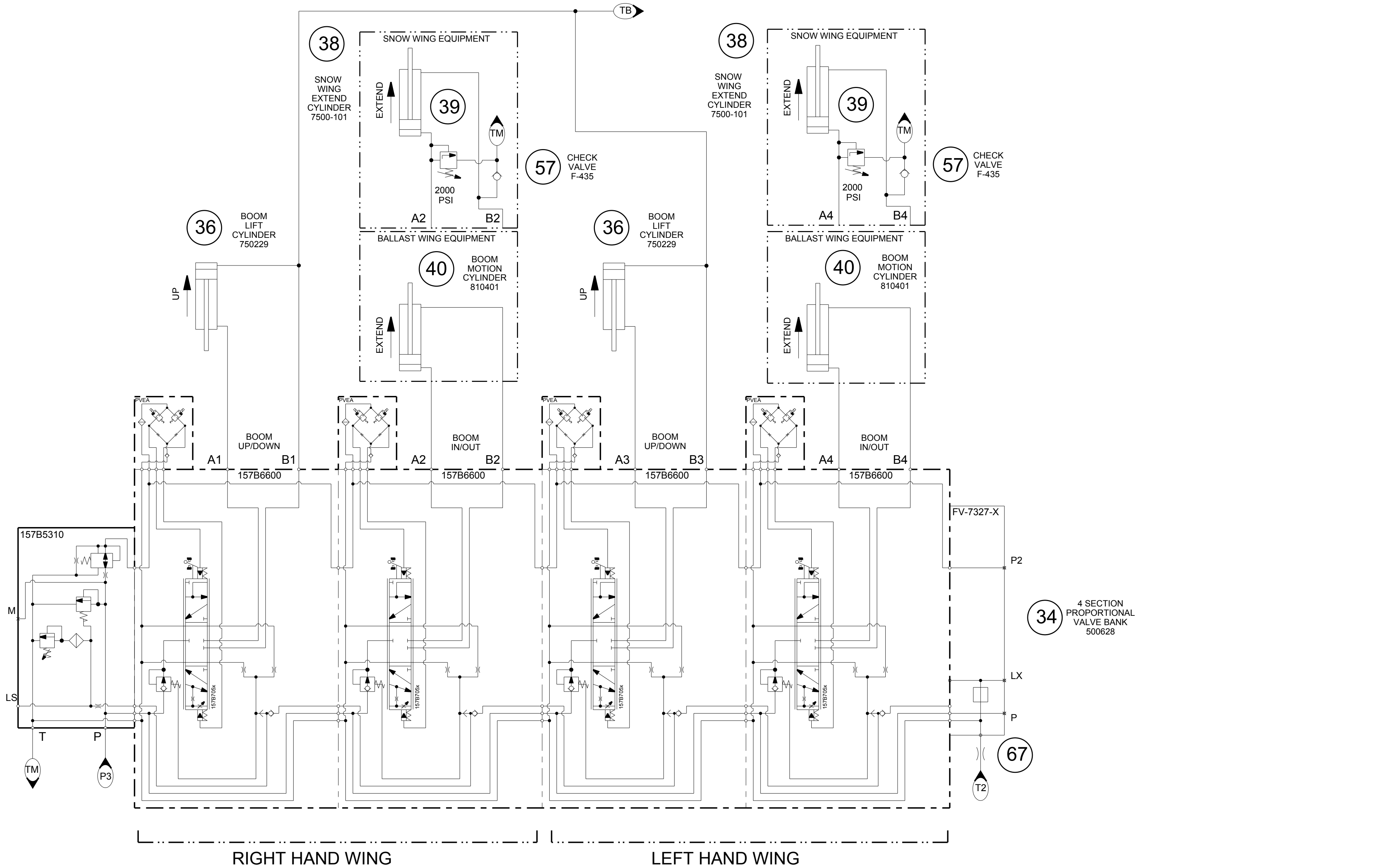
LEFT HAND WING

FIXED BALLAST WING

S/N 800400 & UP

REVISION HISTORY
LOCATED ON LAST SHEET

CUSTOMARY:					
ALL DIMENSIONS IN INCHES		PRODUCT: M7			
IMPLIED TOLERANCES		DESCRIPTION: SCHEMATIC, HYDRAULIC			
FRACTION	± 1/8	SIZE	SCALE	DRAWING CODE NUMBER	REV.
.X	± .06	C	NTS	97800003DWG	A
.XX	± .03	ASSEMBLY:		SHEET 3	OF 11
.XXX	± .010				
MACHINE FINISH UNLESS OTHERWISE STATED					
PLANE ANGLES +/- 1°					



RIGHT HAND WING

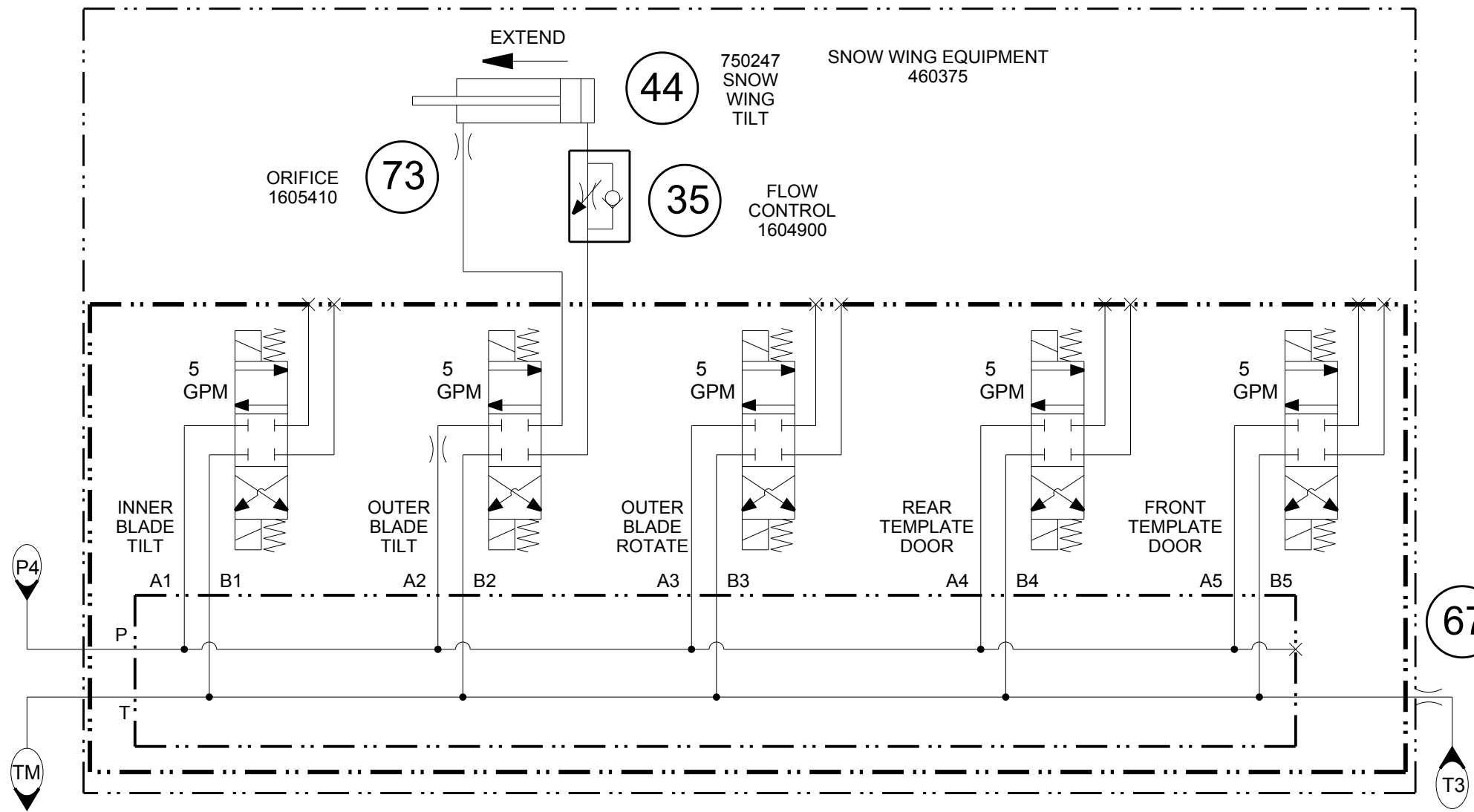
LEFT HAND WING

OPTIONAL
ROTATIONAL BALLAST WING

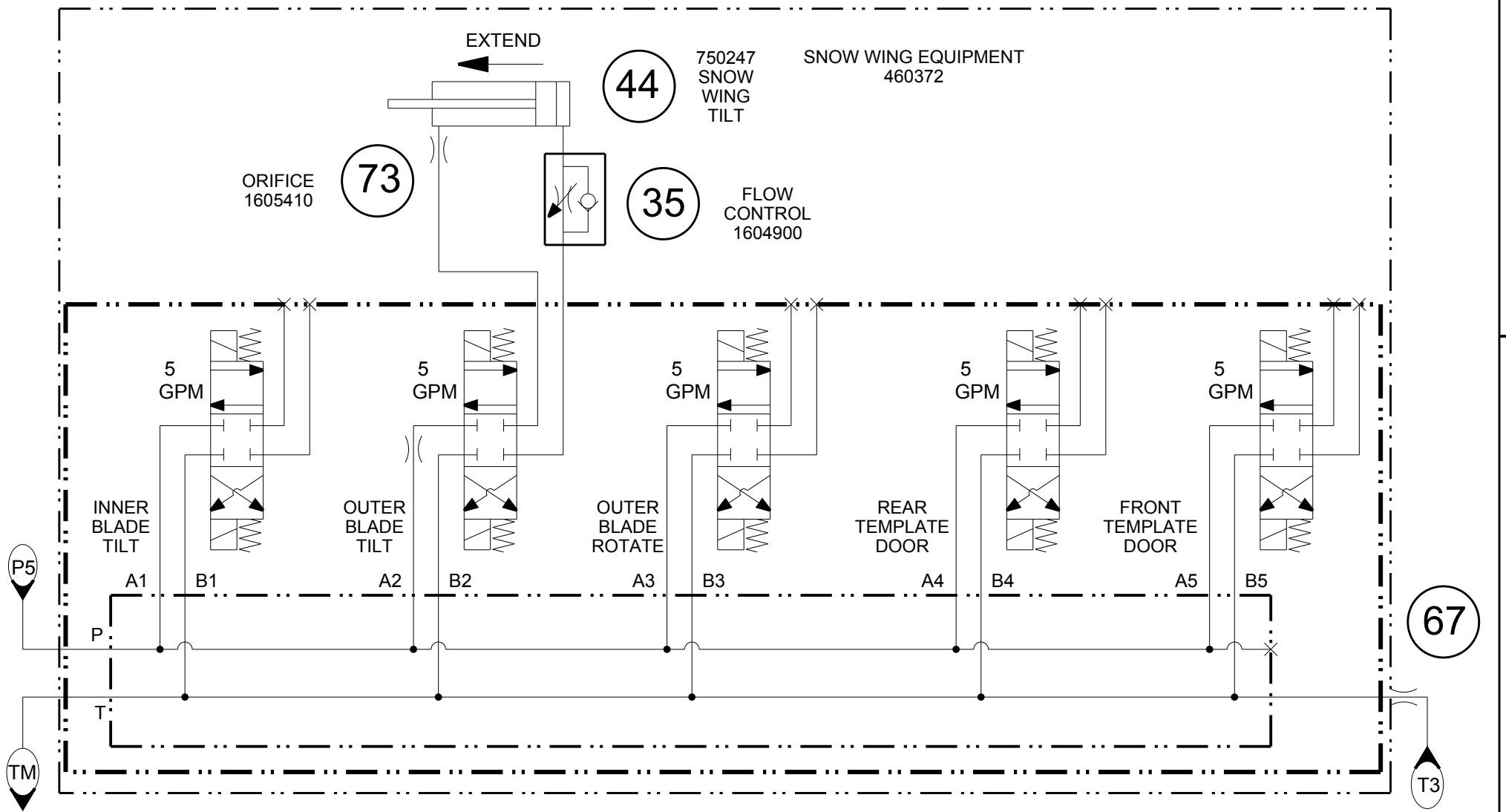
S/N 800400 & UP

REVISION HISTORY
LOCATED ON LAST SHEET

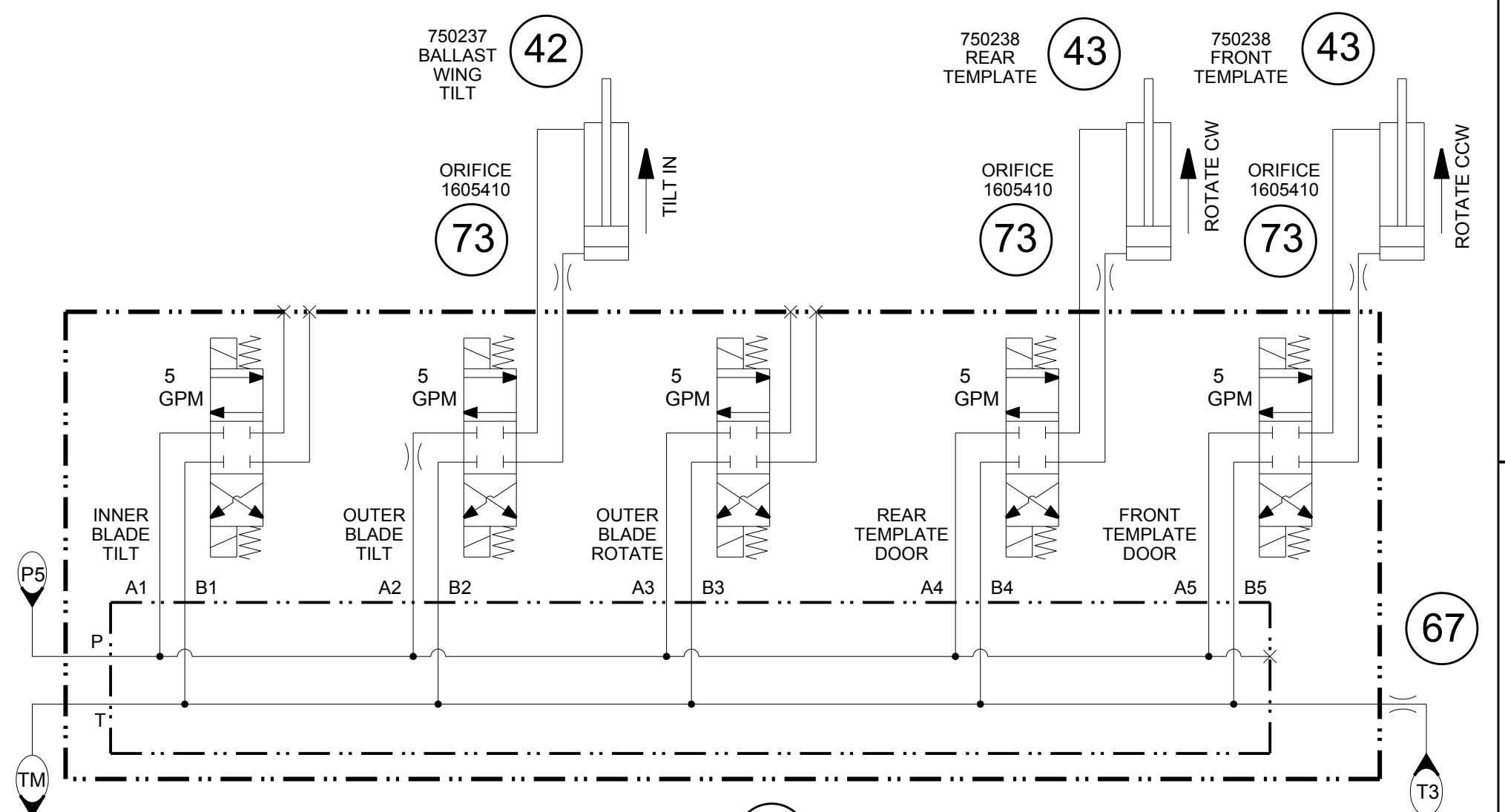
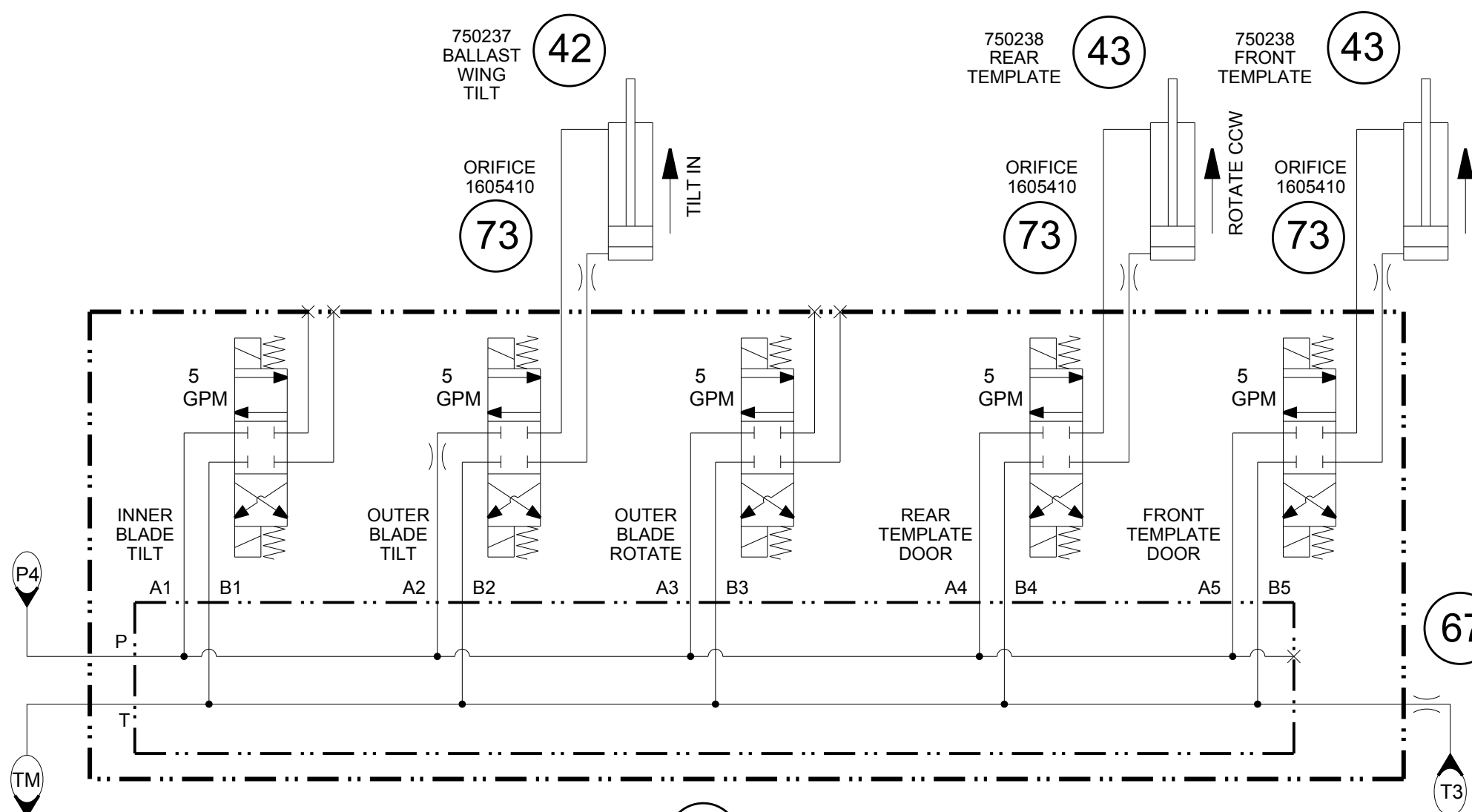
CUSTOMARY:					
ALL DIMENSIONS IN INCHES		PRODUCT: M7			
IMPLIED TOLERANCES		DESCRIPTION: SCHEMATIC, HYDRAULIC			
FRACTION	± 1/8	SIZE	SCALE	DRAWING CODE NUMBER	REV.
.X	± .06	C	NTS	97800003DWG	A
.XX	± .03	ASSEMBLY:		SHEET 4	OF 11
.XXX	± .010				
MACHINE FINISH UNLESS OTHERWISE STATED					
PLANE ANGLES +/- 1°					



RIGHT HAND WING
460386
FIXED BALLAST WING

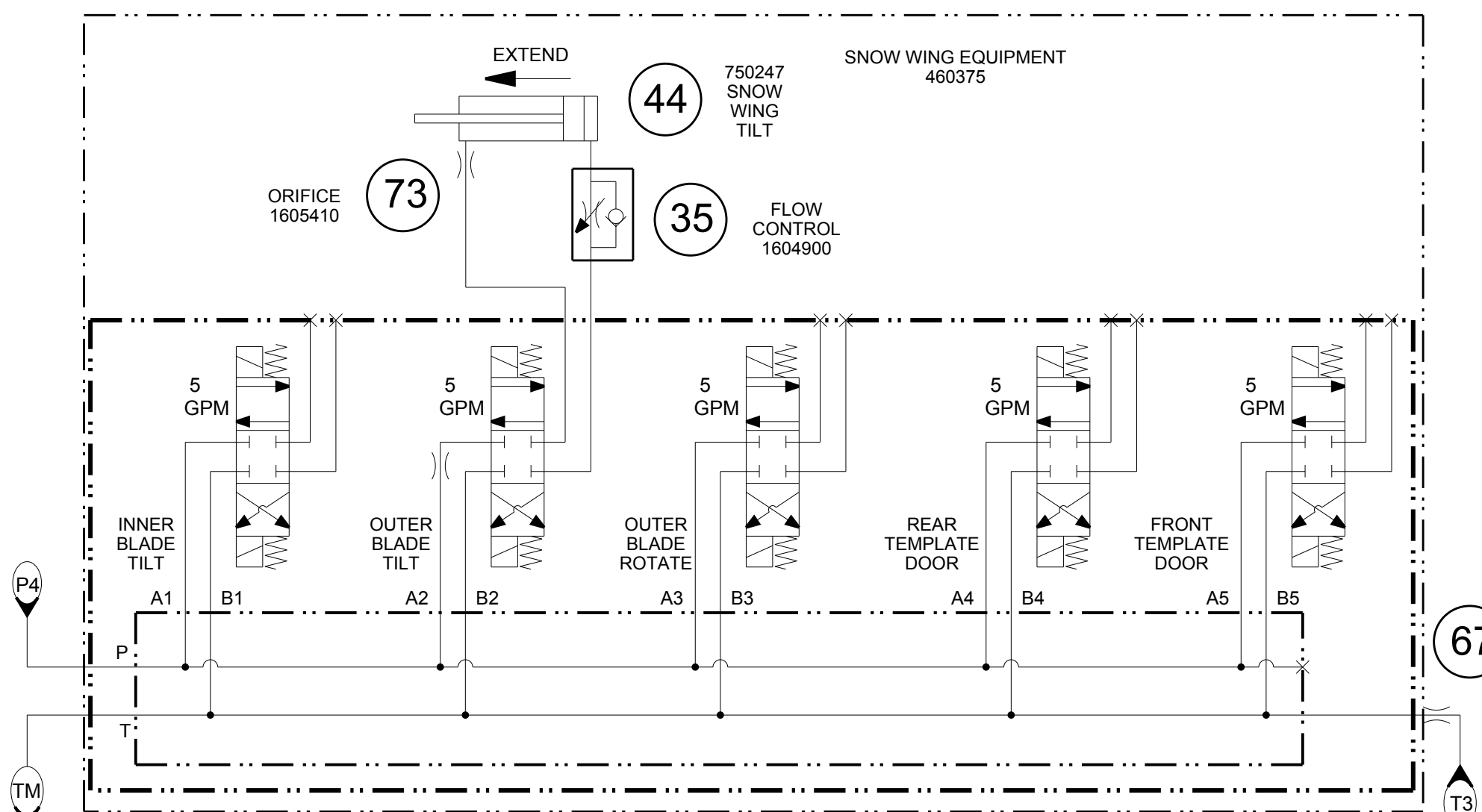


LEFT HAND WING
460387
S/N 800400 & UP

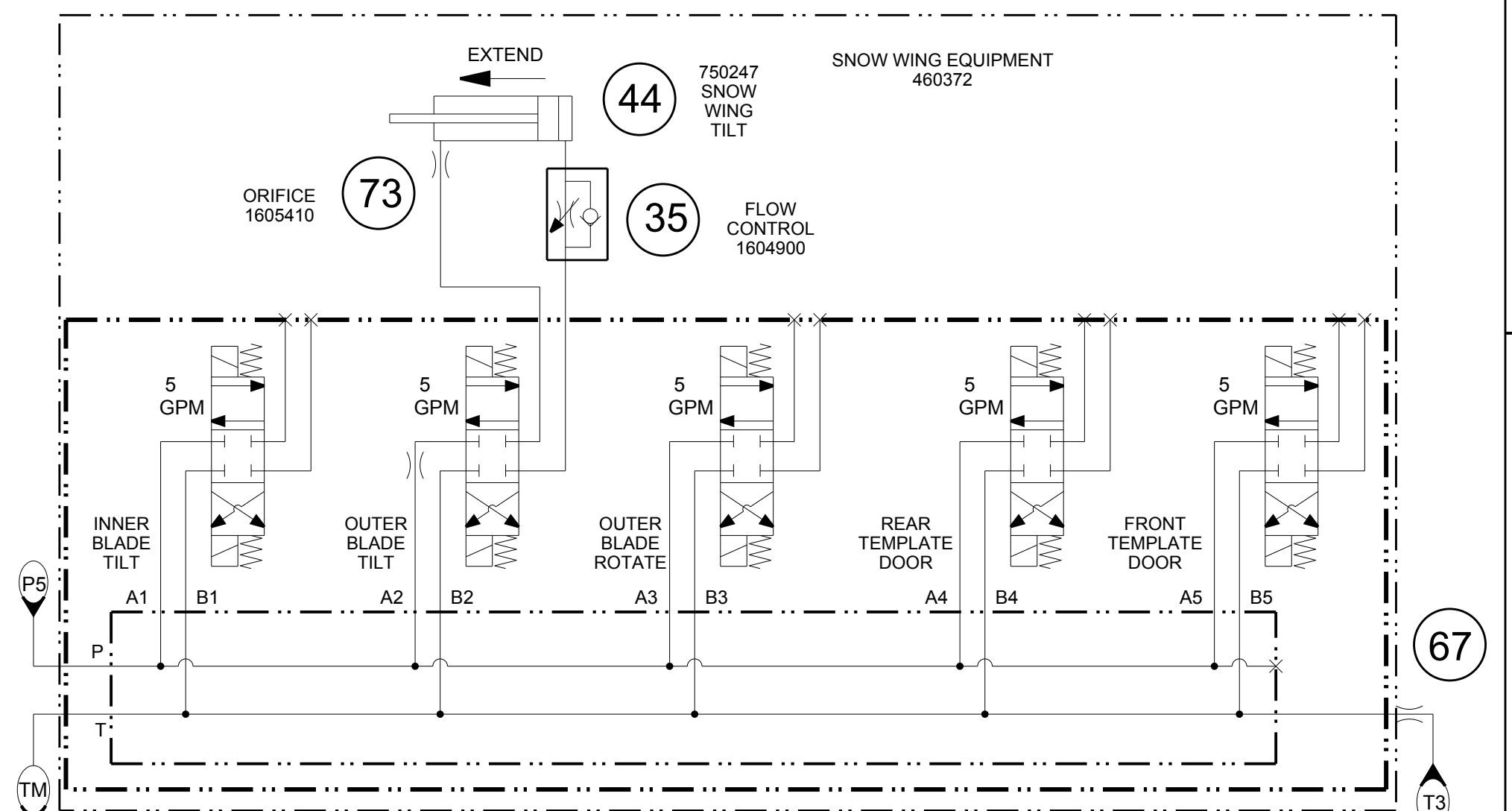


CUSTOMARY:					
ALL DIMENSIONS IN INCHES		PRODUCT: M7			
IMPLIED TOLERANCES		DESCRIPTION: SCHEMATIC, HYDRAULIC			
FRACTION	± 1/8	SIZE	SCALE	DRAWING CODE NUMBER	REV.
.X	± .06	C	NTS	97800003DWG	A
.XX	± .03	ASSEMBLY:		SHEET 5	OF 11
.XXX	± .010				
MACHINE FINISH UNLESS OTHERWISE STATED					
PLANE ANGLES ±.1°					

REVISION HISTORY
LOCATED ON LAST SHEET



RIGHT HAND WING
460386



LEFT HAND WING
460387 S/N 800400 & UP

OPTIONAL
ROTATIONAL BALLAST WING

41 VALVE MANIFOLD
5 STATION DO3
500170

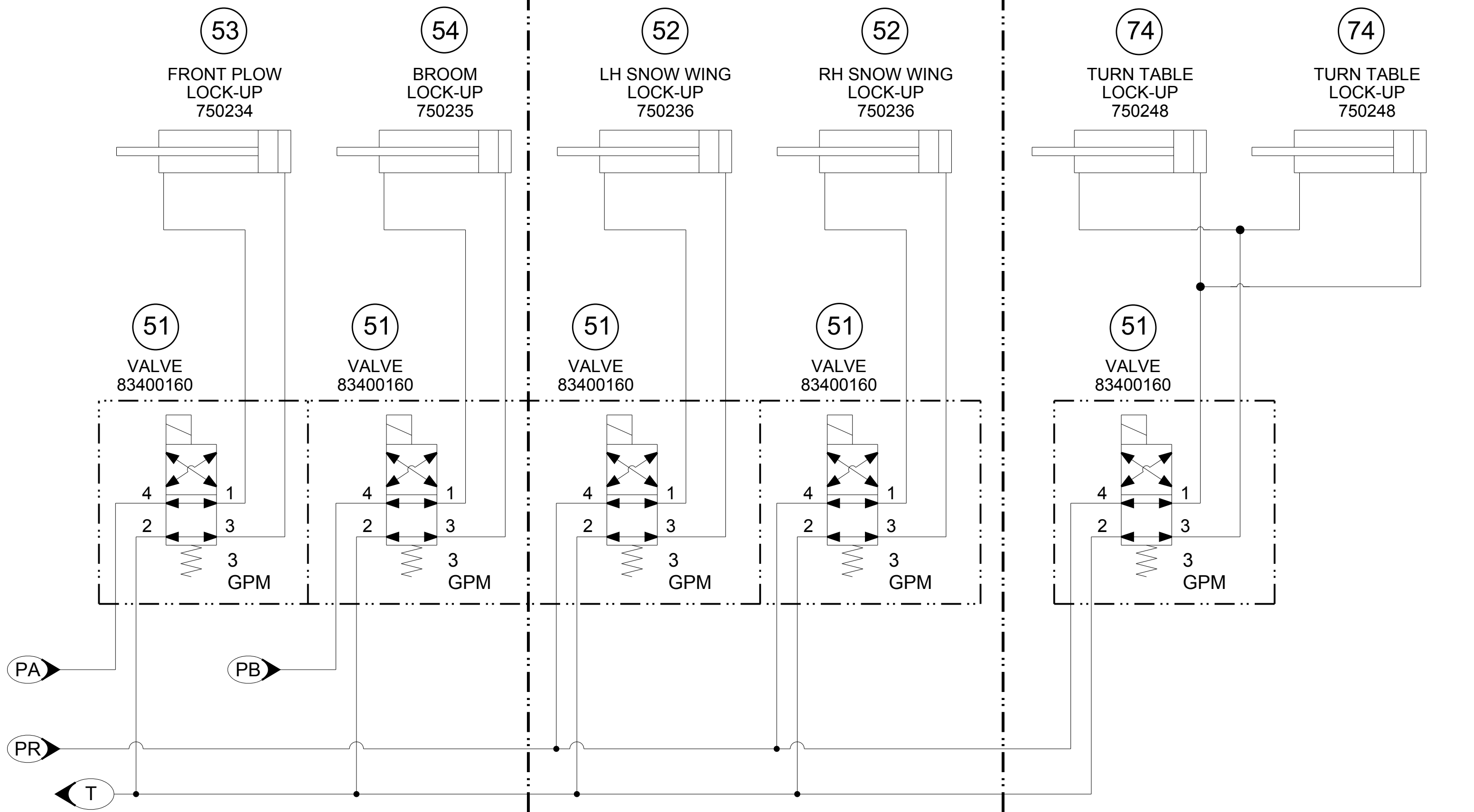
41 VALVE MANIFOLD
5 STATION DO3
500170

CUSTOMARY:					
ALL DIMENSIONS IN INCHES		PRODUCT: M7		THIRD ANGLE PROJECTION	
IMPLIED TOLERANCES:		DESCRIPTION: SCHEMATIC, HYDRAULIC			
FRACTION	± 1/8	SIZE	SCALE	DRAWING CODE NUMBER	REV.
.X	± .06	C	NTS	97800003DWG	A
.XX	± .03	ASSEMBLY:		SHEET 6	OF 11
.XXX	± .010				
MACHINE FINISH UNLESS OTHERWISE STATED					
PLANE ANGLES ±.1°					

REVISION HISTORY
LOCATED ON LAST SHEET

OPTIONAL
SNOW WINGS W/POWER LOCK

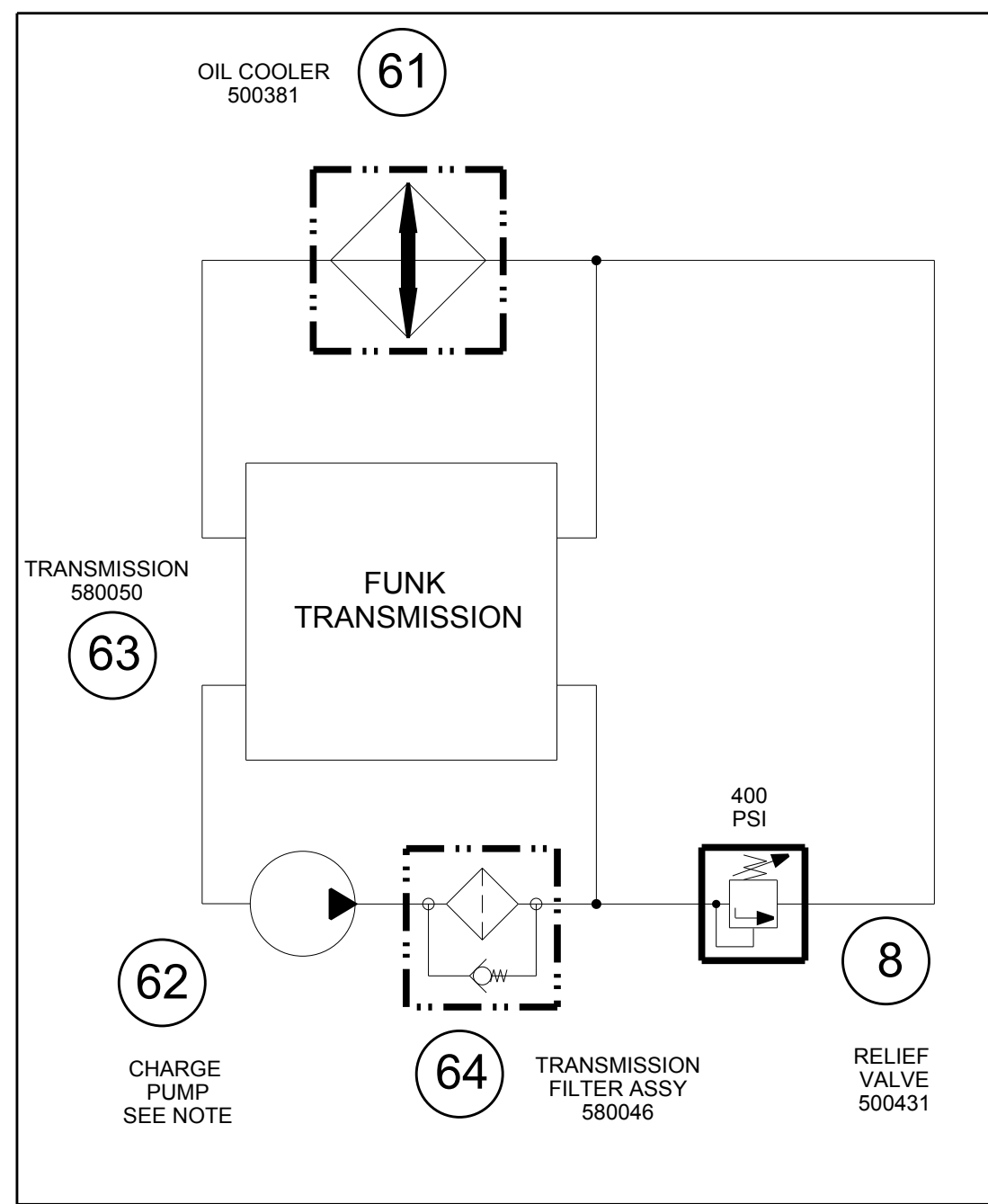
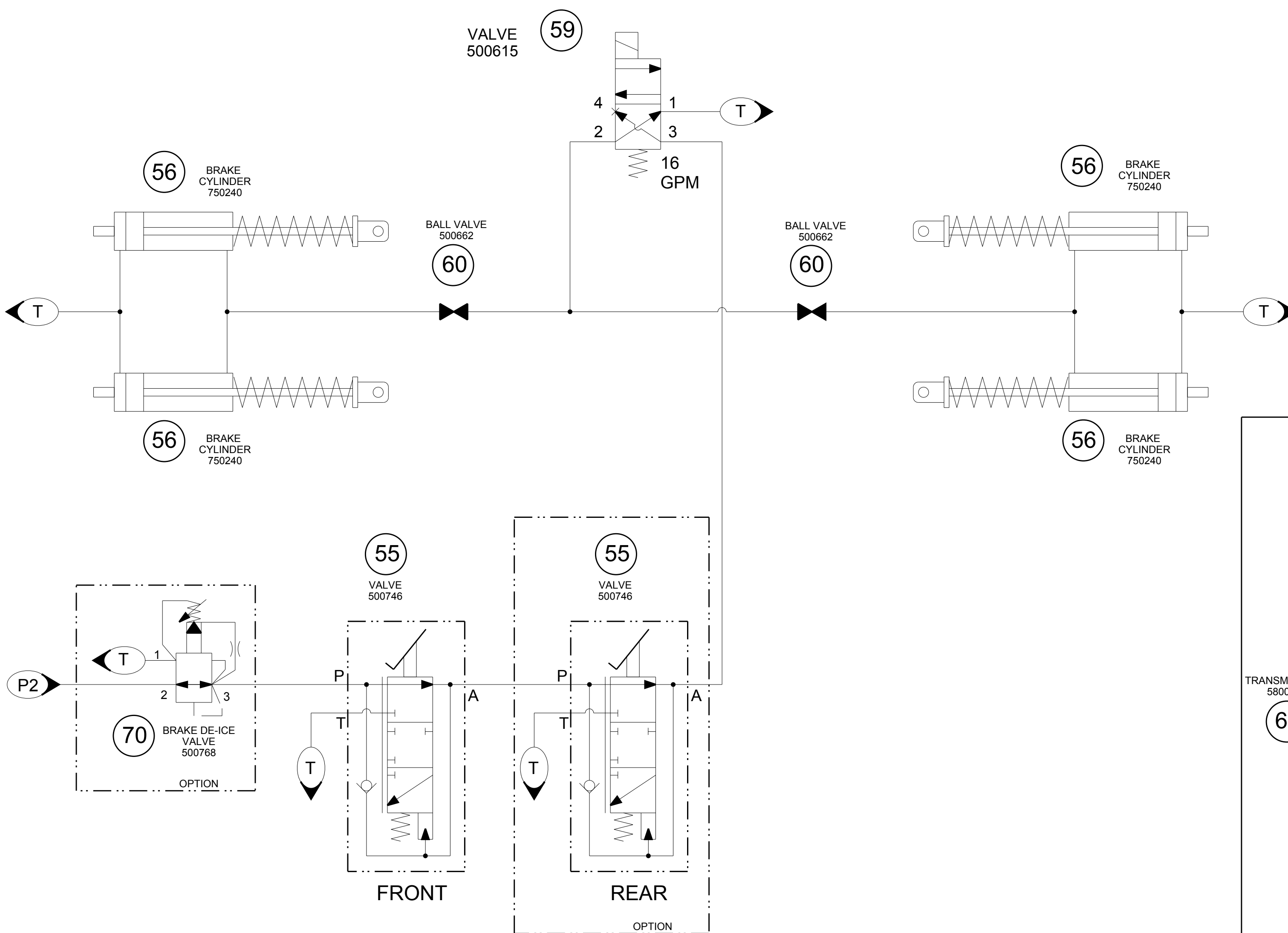
OPTION 460424
TURN TABLE POWER LOCK



S/N 800400 & UP

CUSTOMARY: ALL DIMENSIONS IN INCHES					
IMPLIED TOLERANCES		PRODUCT: M7			
DESCRIPTION:		SCHEMATIC, HYDRAULIC			
FRACTION	± 1/8	SIZE	SCALE	DRAWING CODE NUMBER	REV.
.X	± .06	C	NTS	97800003DWG	A
.XX	± .03	ASSEMBLY:		SHEET 7 OF 11	
.XXX	± .010				
MACHINE FINISH UNLESS OTHERWISE STATED					
PLANE ANGLES +/- 1°					

REVISION HISTORY
LOCATED ON LAST SHEET



BRAKE SYSTEM

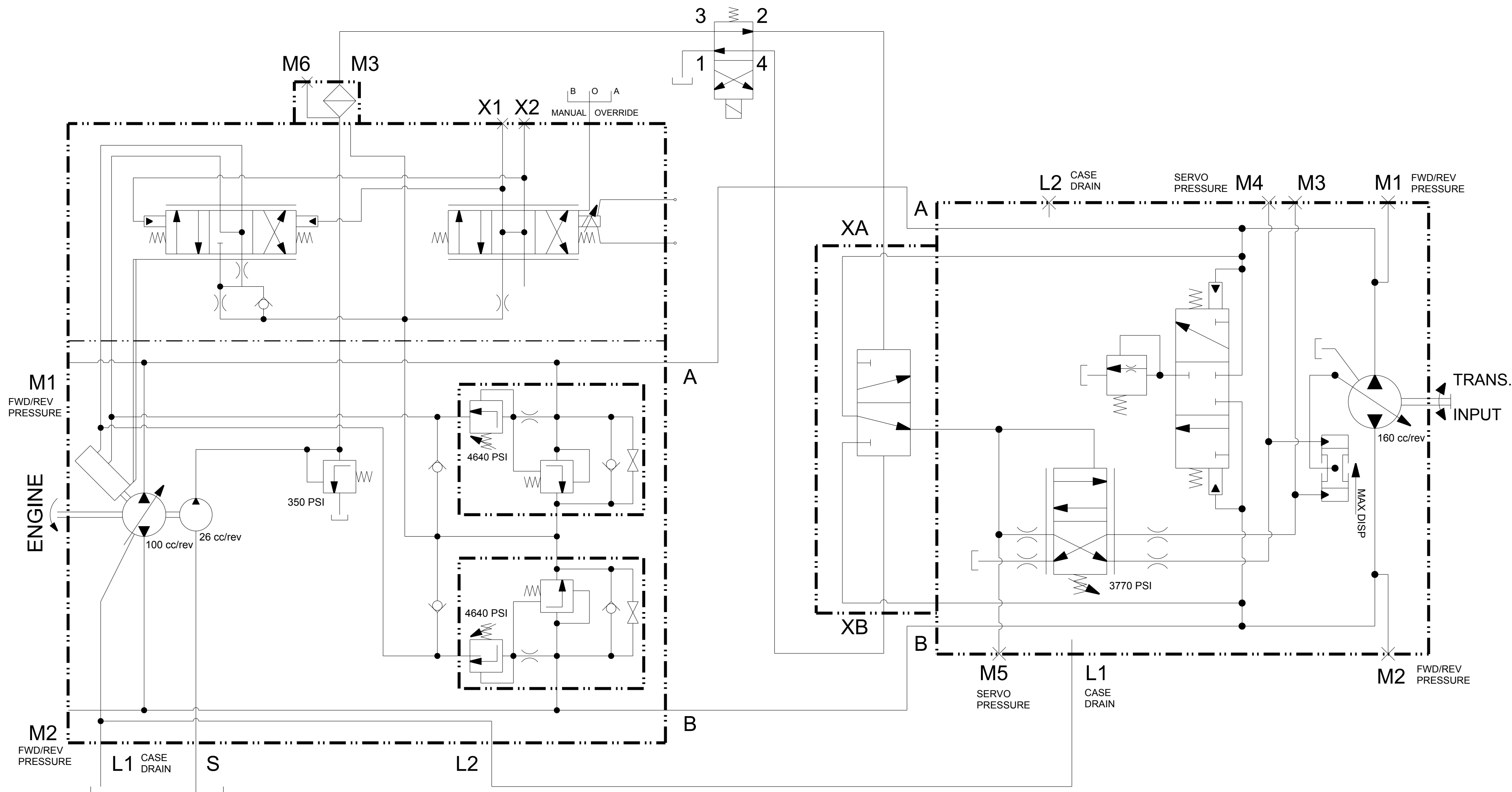
S/N 800400 & UP

NOTE
500011 FOR S/N 800300 ONLY
500777 FOR S/N 800301 & UP

REVISION HISTORY
LOCATED ON LAST SHEET

CUSTOMARY: ALL DIMENSIONS IN INCHES				THIRD ANGLE PROJECTION	
IMPLIED TOLERANCES		PRODUCT: M7			
FRACTION	± 1/8	DESCRIPTION: SCHEMATIC, HYDRAULIC			
.X	± .06	SIZE	SCALE	DRAWING CODE NUMBER	REV.
.XX	± .03	C	NTS	97800003DWG	A
.XXX	± .010	ASSEMBLY:		SHEET 8 OF 11	
MACHINE FINISH UNLESS OTHERWISE STATED					
PLANE ANGLES +/- 1°					

51 VALVE 83400160



PUMP SERIES 90
CLOCKWISE (CW) ROTATION
500649



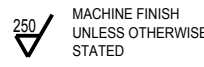
65

MOTOR SERIES 51-1

500648

66

S/N 800400 & UP

CUSTOMARY: ALL DIMENSIONS IN INCHES				 THIRD ANGLE PROJECTION	
IMPLIED TOLERANCES		PRODUCT: M7			
FRACTION	± 1/8	DESCRIPTION: SCHEMATIC, HYDRAULIC			
.X	± .06	SIZE	SCALE	DRAWING CODE NUMBER	REV.
.XX	± .03	C	NTS	97800003DWG	A
.XXX	± .010	ASSEMBLY:		SHEET 9 OF 11	
 MACHINE FINISH UNLESS OTHERWISE STATED PLANE ANGLES +/- 1°					

REVISION HISTORY
LOCATED ON LAST SHEET

ITEM NO.	NORDCO PART NO.	DESCRIPTION	STD QTY.	OPT QTY.
01	500624	HYDRAULIC OIL TANK	1	-
02	F-438	BALL VALVE	1	-
03	500619	SUCTION STRAINER	1	-
03-1	500092	ELEMENT		
04	500625	SUCTION MANIFOLD	1	-
05	500650	DUAL PUMP, PRESS.COMP.-GEAR	1	-
05-1	500626	PUMP, IMPLEMENT		
05-2	500627	PUMP, GEAR		
06	54218493	UNLOADING VALVE	2	-
06-1	25534036	COIL, DESTROKE		
07	1607046	BALL VALVE	1	-
08	500431	RELIEF VALVE	3	-
09	G-065-24V	EMERGENCY PUMP	1	-
09-1	520247	CABLE, EMERGENCY PUMP		
10	F-566	CHECK VALVE	1	-
11	3880259	PRESSURE FILTER	1	-
11-1	5193970	SENDING UNIT		
11-2	3894289	ELEMENT		
12	-	-	-	-
13	-	-	-	-
14	500775	RETURN MANIFOLD	1	-
15	500385	HYDRAULIC OIL COOLER	2	-
15-1	500383	OIL COOLER		
15-2	500384	FAN, OIL COOLER		
16	660121	TEMPERATURE SWITCH	2	-
16-1	96391051	ASSY, CONTROLLER KIT		
17	3880323	RETURN FILTER	2	-
17-1	5193975	SENDING UNIT		
17-2	3894289	ELEMENT		
18	500428	BROOM VALVE	1	-
18-1	500629	VALVE, DIR CTRL OPEN CENTER		
19	500481	BROOM VALVE SUBPLATE	1	-
20	F-233	BROOM & BLOWER MOTOR	1	-
21	500647	SNOW BLOWER VALVE	1	-
21-1	500629	VALVE, DIR CTRL OPEN CENTER		
21-2	500802	ELEMENT LOGIC N.O.		
21-3	500803	NEEDLE VALVE		
22	500406	PRESSURE REDUCING VALVE	1	-
22-1	505002	VALVE, PRES RED CARTRIDGE		
23	500014	CASE DRAIN FILTER	-	1
23-1	3890145	FILTER ELEMENT		
23-2	3880352	HEAD FILTER		
23-3	500024	VISUAL INDICATOR		
24	500175	6 STATION D03 VALVE MANIFOLD	1	-
24-1	500173	MANIFOLD, 6 STATION D03		
24-2	500172	VALVE, SOLENOID DIRECTIONAL		
25	500430-24V	FLOAT VALVE	1	-
25-1	500651	SOLENOID FOR NACHI VALVE		
26	1696782	TURN TABLE CONTROL VALVE	1	-
27	F-201	CHUTE ROTATE	1	-
28	F-611	CHECK VALVE	2	-
29	750242	TURN TABLE CYLINDERS	2	-
29-1	SK-750242	SEAL KIT		
30	7500-227	PLOW LIFT	1	-
30-1	SK-7500-227	SEAL KIT 500799		
31	7500-120	PLOW BLADE CYLINDER	2	-
31-1	SK-7500-120	SEAL KIT 500799		
32	7500-109	BROOM LIFT CYLINDER	1	-
32-1	SK-7500-109	SEAL KIT 500798		
33	750241	BROOM TILT CYLINDER	2	-
33-1	SK-750241	SEAL KIT 500799		
34	500628	4 SECTION PROPORTIONAL VALVE	1	-
35	1604900	FLOW CONTROL VALVE	5	-

ITEM NO.	NORDCO PART NO.	DESCRIPTION	STD QTY.	OPT QTY.
36	750229	BOOM LIFT CYLINDER	2	-
36-1	SK-750229	SEAL KIT	-	-
37	750239	BOOM MOTION CYLINDER	2	-
37-1	SK-750239	SEAL KIT 500799	-	-
38	7500-101	SNOW WING EXTEND CYLINDER	2	-
38-1	SK-7500-101	SEAL KIT 500801	-	-
39	F-640	QUICK ACTING DUMP VALVE	2	-
40	810401	BOOM MOTION CYLINDER	-	2
40-1	SK-810401	SEAL KIT 500799		
41	500170	5 STATION D03 VALVE MANIFOLD	2	-
41-1	500171	MANIFOLD, 5 STATION D03		
41-2	500172	VALVE, SOLENOID DIRECTIONAL		
42	750237	BALLAST WING TILT CYL	2	-
42-1	7SK-50237	SEAL KIT 500798		
43	750238	TEMPLATE DOOR CYLINDER	4	-
43-1	SK-750238	SEAL KIT 500799		
44	750247	SNOW WING TILT CYLINDER	2	-
44-1	SK-750247	SEAL KIT 500799		
45	810400	INNER DOOR TILT CYLINDER	-	2
45-1	SK-810400	SEAL KIT 500798		
46	810404	OUTER DOOR TILT CYLINDER	-	2
46-1	SK-810404	SEAL KIT 500798		
47	810406	OUTER DOOR ROTATE CYLINDER	-	2
47-1	SK-810406	SEAL KIT 500798		
48	810403	TEMPLATE DOOR CYLINDER	-	4
48-1	SK810403	SEAL KIT 500799		
49	-	-	-	-
49-1	-	-	-	-
50	-	-	-	-
51	83400160	2 POSITION VALVE	3	3
52	750236	SNOW WING LOCK-UP CYLINDER	-	2
53	750234	FRONT PLOW LOCK-UP CYLINDER	1	-
54	750235	BROOM LOCK-UP CYLINDER	1	-
55	500746	BRAKE VALVE, FOOT PEDAL	1	1
56	750240	SINGLE ACTING BRAKE CYLINDER	4	-
57	F-435	CHECK VALVE	2	-
58	-	-	-	-
59	500615	VALVE, SOLENOID 2-POSITION	1	2
59-1	500779	VALVE, 2-POSITION 4-WAYS		
59-2	520277	COIL, 24VDC DIN 43650		
60	500662	LOCKING BALL VALVE 3/4 NPT	2	-
61	500381	TRANSMISSION OIL COOLER	1	-
61-1	500382	FAN, OIL COOLER		
62	500011	CHARGE PUMP, S/N800300 ONLY	1	-
	500777	CHARGE PUMP, S/N800301 & UP	1	-
63	580050	FUNK TRANSMISSION	1	-
63-1	580056	SENDER, TEMP TRANS FUNK		
63-2	580057	GAUGE, TEMP TRANS FUNK		
64	580046	TRANSMISSION FILTER ASSY	1	-
64-1	580047	BASE, FILTER		
64-2	580048	ELEMENT FILTER		
65	500649	SERIES 90 PUMP	1	-
65-1	500072	PUMP FILTER		
66	500648	SERIES 51-1 MOTOR	1	-
67	500111	ORIFICE 0.093	4	-
68	1605895	CHECK VALVE 100 PSI	1	-
69	500028	MOTOR, WHEEL HYD OMVW800	1	-
70	500768	VALVE, REDUCING WITH HANDKNOB	-	1
71	50078570	MANIFOLD TWO STATION HEADER	1	-
72	50079050	MANIFOLD HEADER 6 PORTS	1	-
73	1605410	ORIFICE, .06	8	2
74	750248	CYLINDER, TURN TABLE LOCK	-	2
75	1605890	CHECK VALVE 125 PSI	1	-

S/N 800400 & UP

CUSTOMARY:					
ALL DIMENSIONS IN INCHES		PRODUCT: M7			
IMPLIED TOLERANCES		DESCRIPTION: SCHEMATIC, HYDRAULIC			
FRACTION	± 1/8	SIZE	SCALE	DRAWING CODE NUMBER	REV.
.X	± .06				
.XX	± .03				
.XXX	± .010				
MACHINE FINISH UNLESS OTHERWISE STATED		C	NTS	97800003DWG	A
PLANE ANGLES +/- 1°		ASSEMBLY:		SHEET 10 OF 11	

REVISION HISTORY LOCATED ON LAST SHEET

NO.97800003DWG




SHEET NO.
11/11

ALL INFORMATION CONTAINED ON THIS DRAWING IS CONSIDERED TO BE BOTH CONFIDENTIAL AND PROPRIETARY BY NORDCO INC. NO USE OR REPRODUCTION THEREOF MAY BE MADE WITHOUT THE EXPRESS WRITTEN CONSENT OF NORDCO INC.

ECO	54554	REV -	
DRAWN BY:		CHECKED BY:	APPROVED BY:
DLS 02-13-09		SCR 2/16/09	MK 2/17/09
SHEET	CHANGE		
ALL	NEW ISSUE		

ECO	601310	REV A	
DRAWN BY:		CHECKED BY:	APPROVED BY:
TDM 05-22-14			
SHEET	CHANGE		
10	ITEM 17-1 PART # 5193975 WAS 5193970		

S/N 800400 & UP

CUSTOMARY:				 THIRD ANGLE PROJECTION	
ALL DIMENSIONS IN INCHES		PRODUCT: M7			
IMPLIED TOLERANCES		DESCRIPTION: SCHEMATIC, HYDRAULIC			
FRACTION	± 1/8	SIZE	SCALE	DRAWING CODE NUMBER	REV.
.X	± .06	C	NTS	97800003DWG	A
.XX	± .03				
.XXX	± .010				
 MACHINE FINISH UNLESS OTHERWISE STATED		ASSEMBLY:		SHEET 11 OF 11	
PLANE ANGLES +/- 1°					