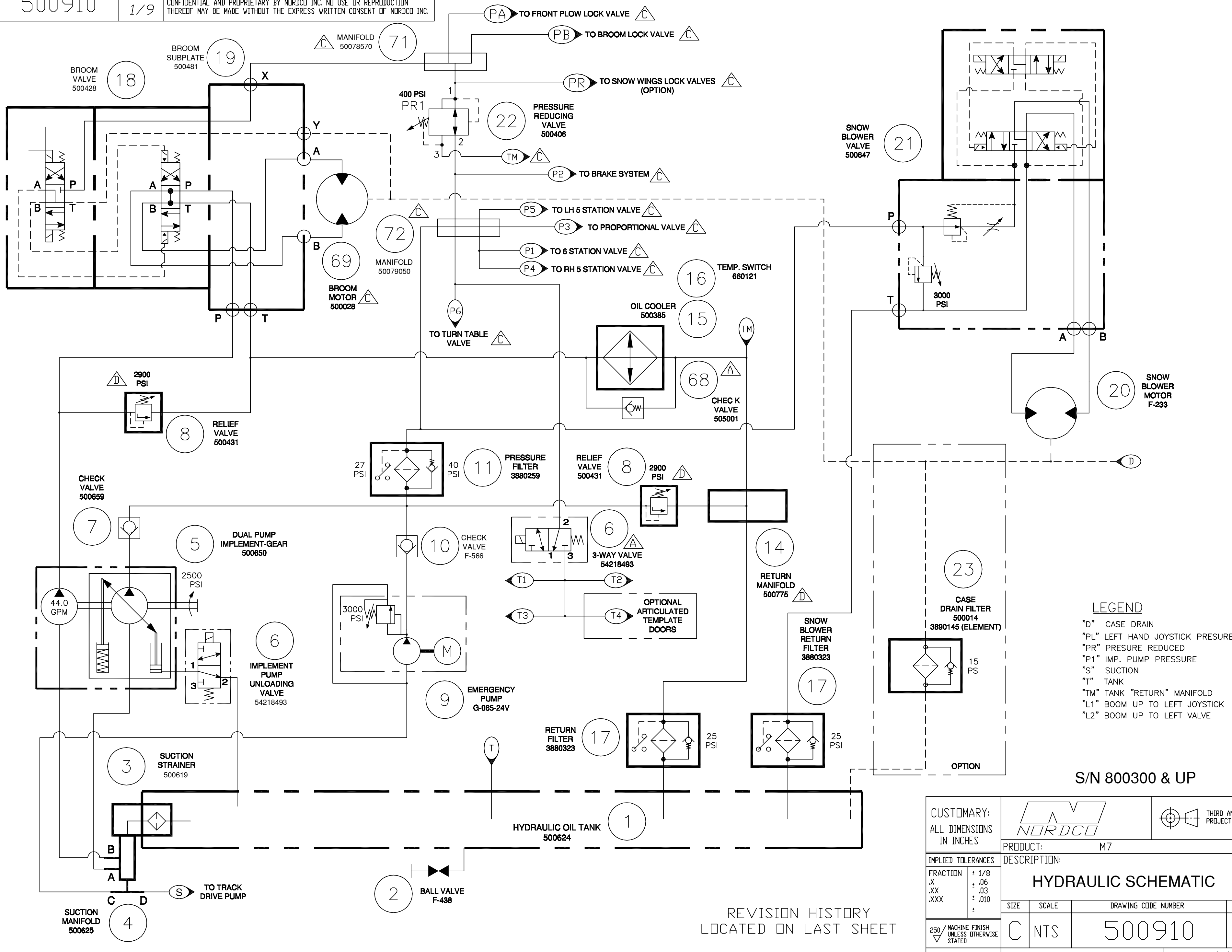


NO. 500910

SHEET NO. 1/9

ALL INFORMATION CONTAINED ON THIS DRAWING IS CONSIDERED TO BE BOTH CONFIDENTIAL AND PROPRIETARY BY NORDCO INC. NO USE OR REPRODUCTION THEREOF MAY BE MADE WITHOUT THE EXPRESS WRITTEN CONSENT OF NORDCO INC.



LEGEND

- "D" CASE DRAIN
- "PL" LEFT HAND JOYSTICK PRESURE
- "PR" PRESURE REDUCED
- "P1" IMP. PUMP PRESSURE
- "S" SUCTION
- "T" TANK
- "TM" TANK "RETURN" MANIFOLD
- "L1" BOOM UP TO LEFT JOYSTICK
- "L2" BOOM UP TO LEFT VALVE

S/N 800300 & UP

CUSTOMARY: ALL DIMENSIONS IN INCHES	NORDCO		THIRD ANGLE PROJECTION
	PRODUCT:	M7	
IMPLIED TOLERANCES	DESCRIPTION: HYDRAULIC SCHEMATIC		
FRACTION	± 1/8	SIZE	SCALE
.X	± .06	C	NTS
.XX	± .03	DRAWING CODE NUMBER	
.XXX	± .010	500910	
		ASSEMBLY:	REV.
250 MACHINE FINISH UNLESS OTHERWISE STATED		X	E
PLANE ANGLES +/- 1°		SHEET 1/9	

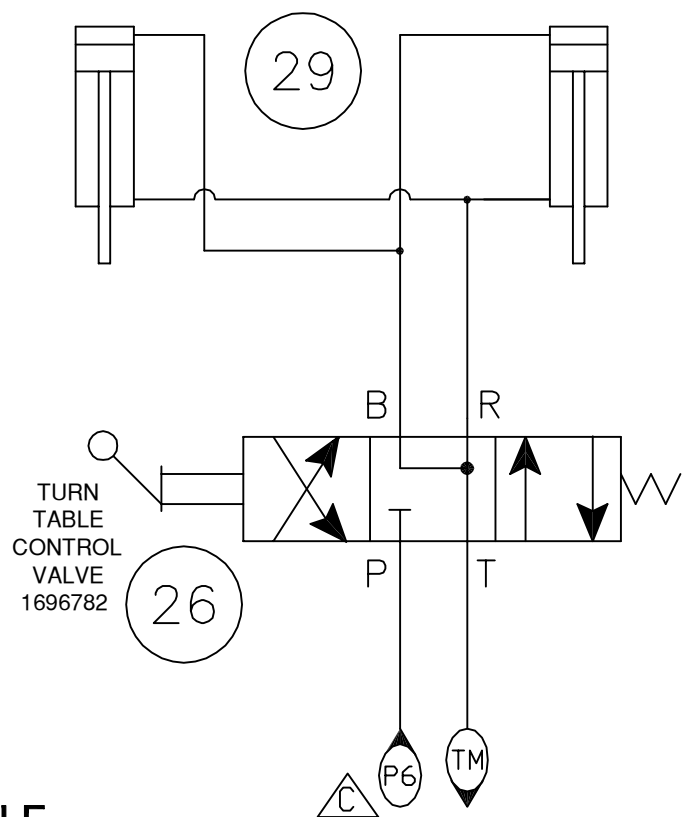
REVISION HISTORY LOCATED ON LAST SHEET

NO. 500910

SHEET NO. 2/9

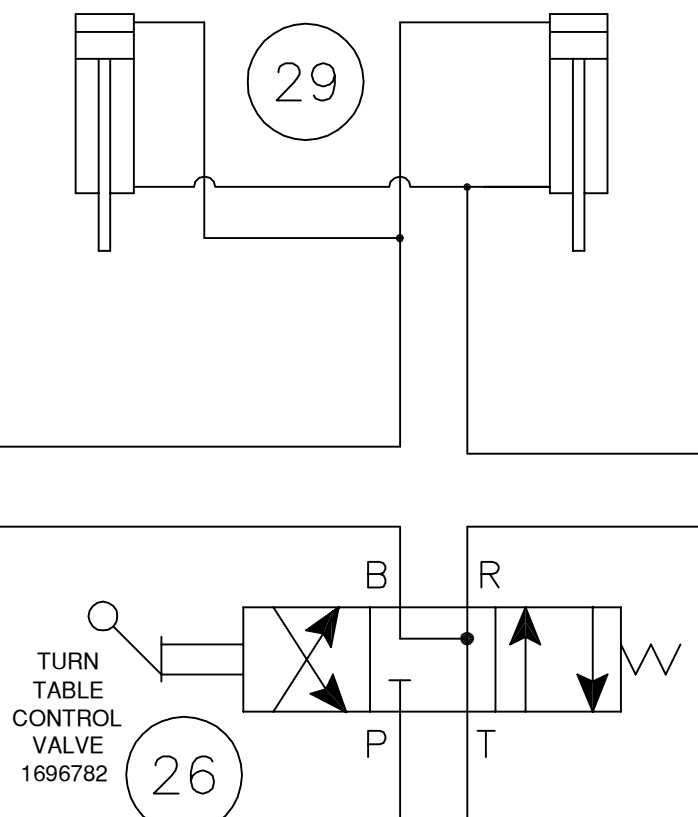
ALL INFORMATION CONTAINED ON THIS DRAWING IS CONSIDERED TO BE BOTH CONFIDENTIAL AND PROPRIETARY BY NORDCO INC. NO USE OR REPRODUCTION THEREOF MAY BE MADE WITHOUT THE EXPRESS WRITTEN CONSENT OF NORDCO INC.

TURN TABLE CYLINDERS 750242



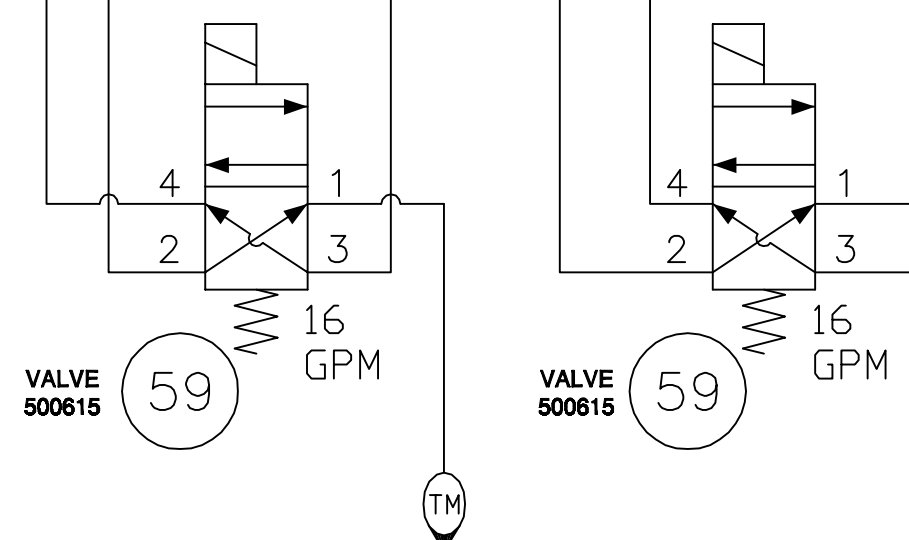
TURN TABLE

TURN TABLE CYLINDERS 750242



TURN TABLE CONTROL VALVE 1696782

26



VALVE 500615

59

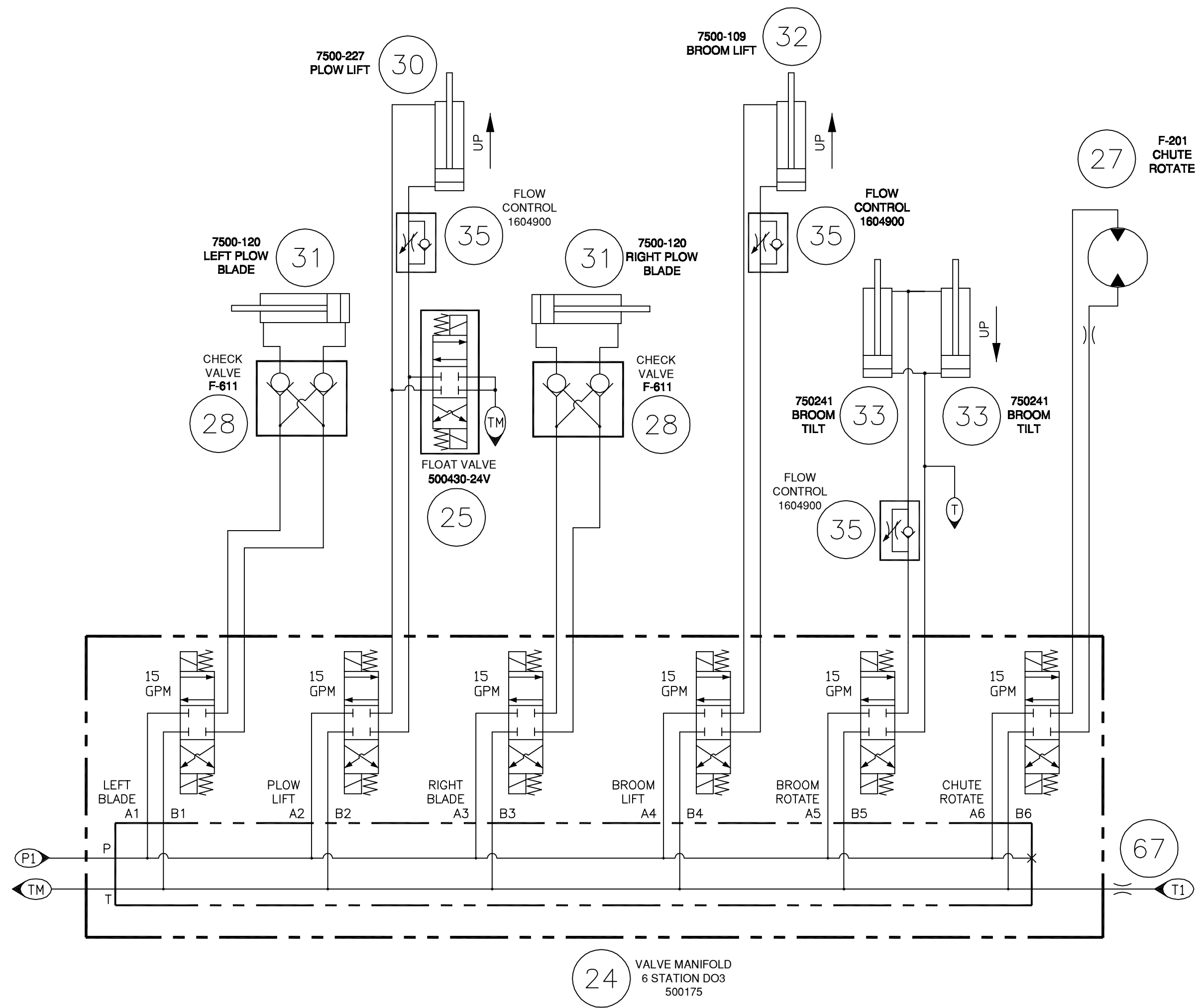
16 GPM

VALVE 500615

59


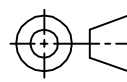
16 GPM

TURN TABLE SAFETY INTERLOCK OPTION #460421



24 VALVE MANIFOLD 6 STATION DO3 500175

S/N 800300 & UP

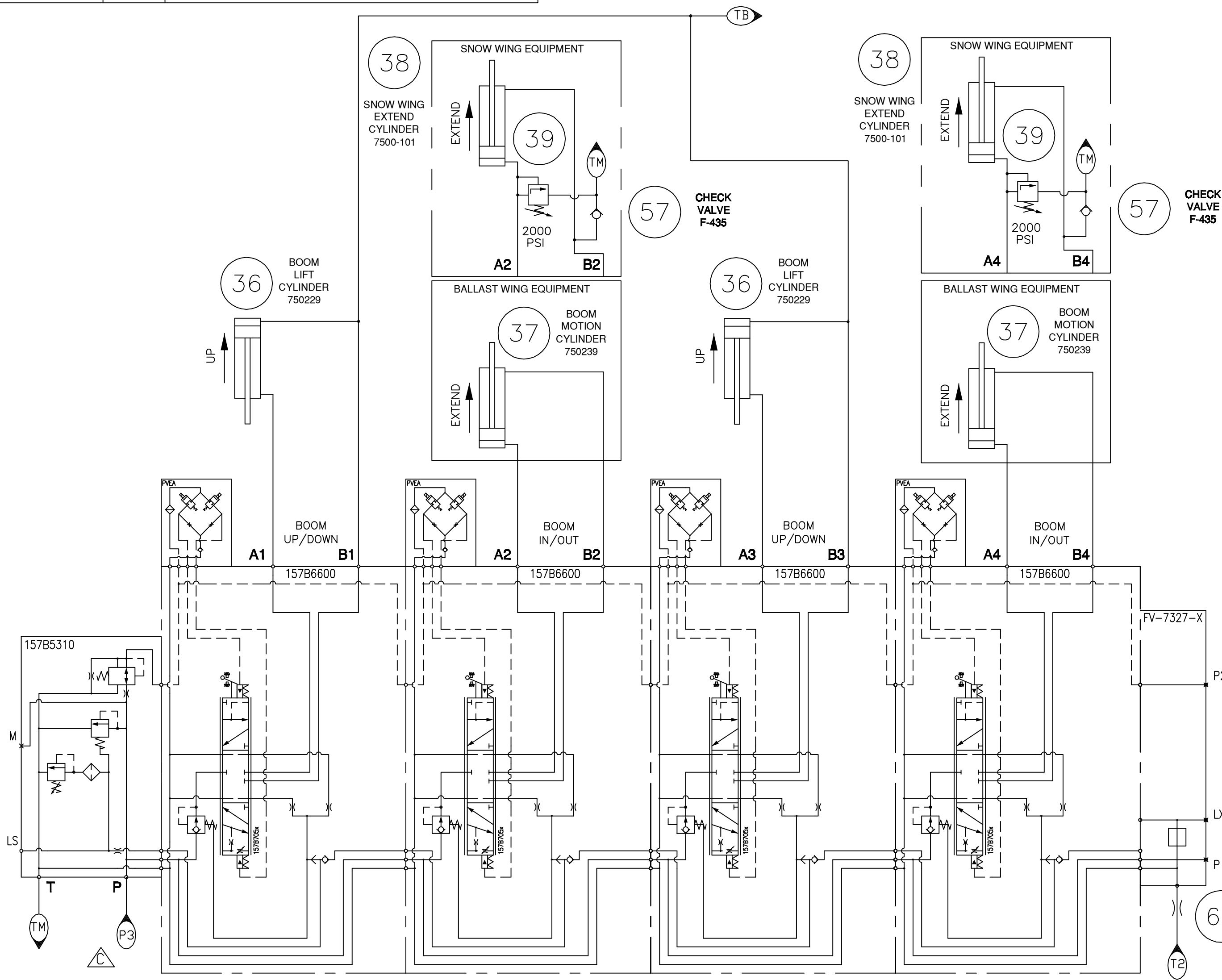
CUSTOMARY: ALL DIMENSIONS IN INCHES			 THIRD ANGLE PROJECTION	
	PRODUCT:	M7		
IMPLIED TOLERANCES	DESCRIPTION:			
FRACTION ± 1/8	HYDRAULIC SCHEMATIC			
.X ± .06				
.XX ± .03				
.XXX ± .010				
250 MACHINE FINISH UNLESS OTHERWISE STATED	SIZE	SCALE	DRAWING CODE NUMBER	REV.
PLANE ANGLES +/- 1°	C	NTS	500910	E
	ASSEMBLY:	X	SHEET	2/9

REVISION HISTORY LOCATED ON LAST SHEET

NO. 500910

SHEET NO. 3A/9

ALL INFORMATION CONTAINED ON THIS DRAWING IS CONSIDERED TO BE BOTH CONFIDENTIAL AND PROPRIETARY BY NORDCO INC. NO USE OR REPRODUCTION THEREOF MAY BE MADE WITHOUT THE EXPRESS WRITTEN CONSENT OF NORDCO INC.




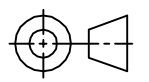
RIGHT HAND WING

LEFT HAND WING

FIXED BALLAST WING

S/N 800300 & UP

REVISION HISTORY LOCATED ON LAST SHEET

CUSTOMARY: ALL DIMENSIONS IN INCHES			 THIRD ANGLE PROJECTION
	PRODUCT: M7		
IMPLIED TOLERANCES	DESCRIPTION: HYDRAULIC SCHEMATIC		
FRACTION ± 1/8 .X ± .06 .XX ± .03 .XXX ± .010	SIZE	SCALE	DRAWING CODE NUMBER
250 MACHINE FINISH UNLESS OTHERWISE STATED	C	NTS	500910
PLANE ANGLES +/- 1°	ASSEMBLY:	X	SHEET 3A/9

G

F

E

D

C

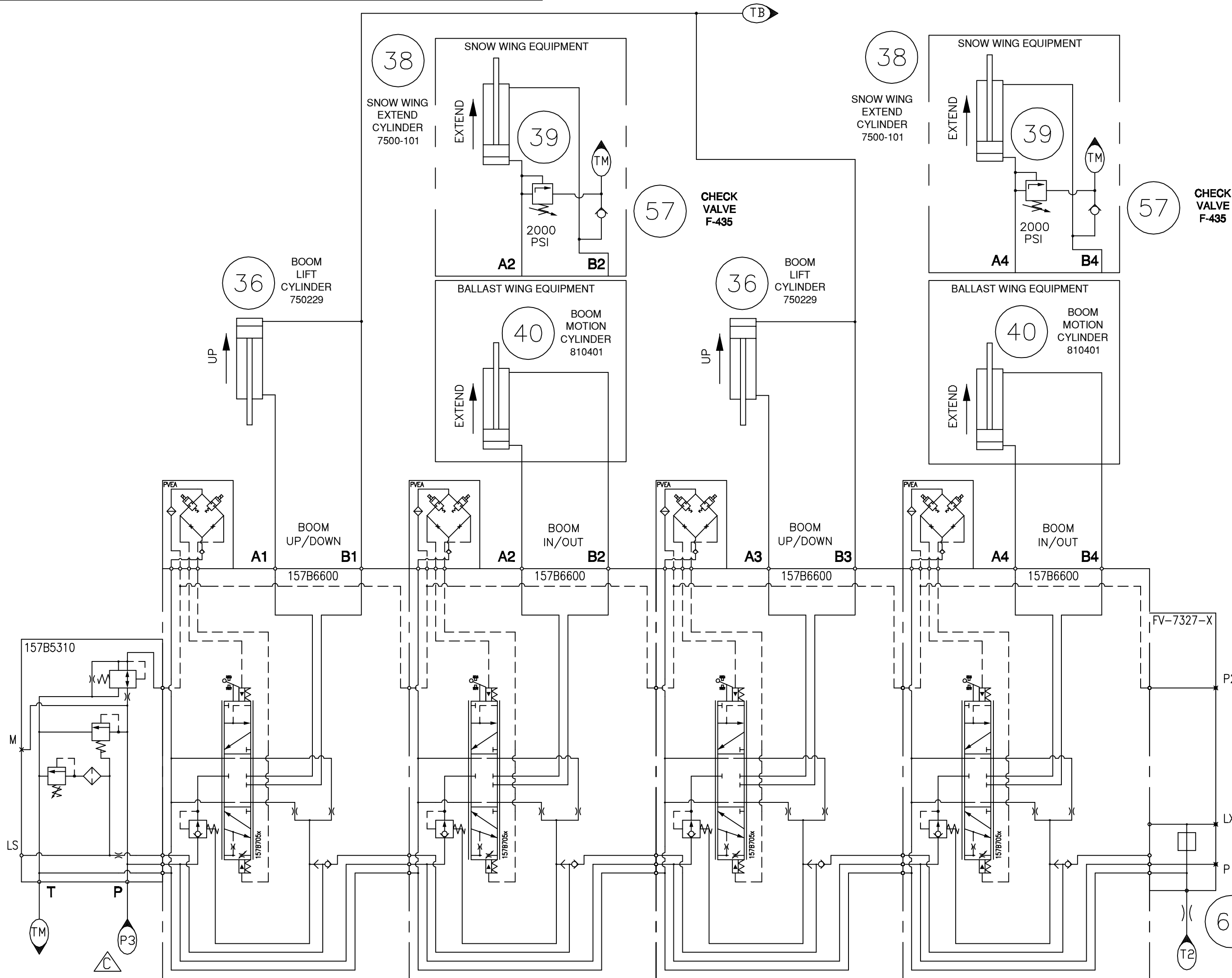
B

A

NO. 500910

SHEET NO. 3B/9

ALL INFORMATION CONTAINED ON THIS DRAWING IS CONSIDERED TO BE BOTH CONFIDENTIAL AND PROPRIETARY BY NORDCO INC. NO USE OR REPRODUCTION THEREOF MAY BE MADE WITHOUT THE EXPRESS WRITTEN CONSENT OF NORDCO INC.




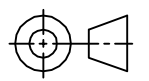
RIGHT HAND WING

LEFT HAND WING

OPTIONAL
ROTATIONAL BALLAST WING

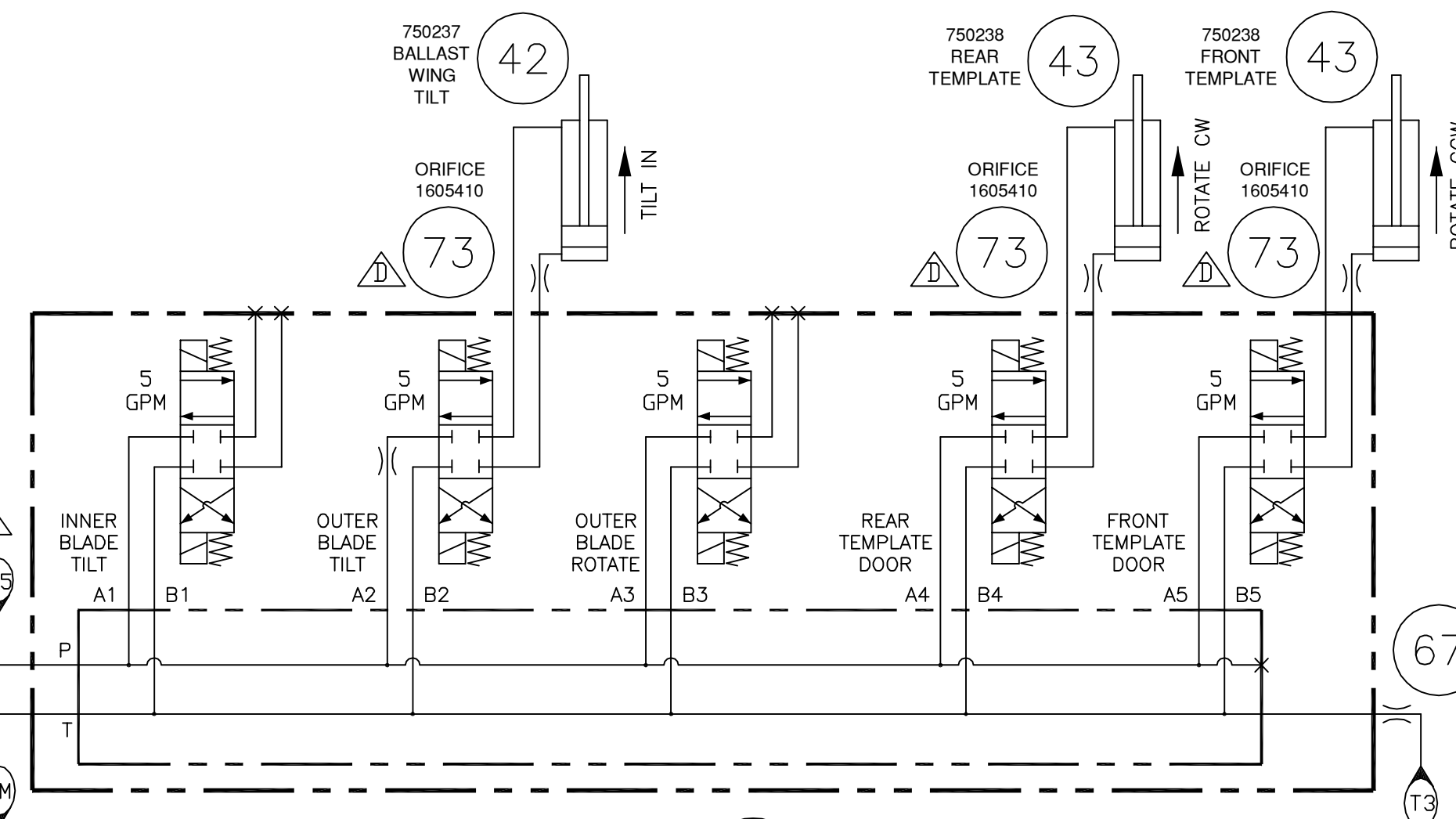
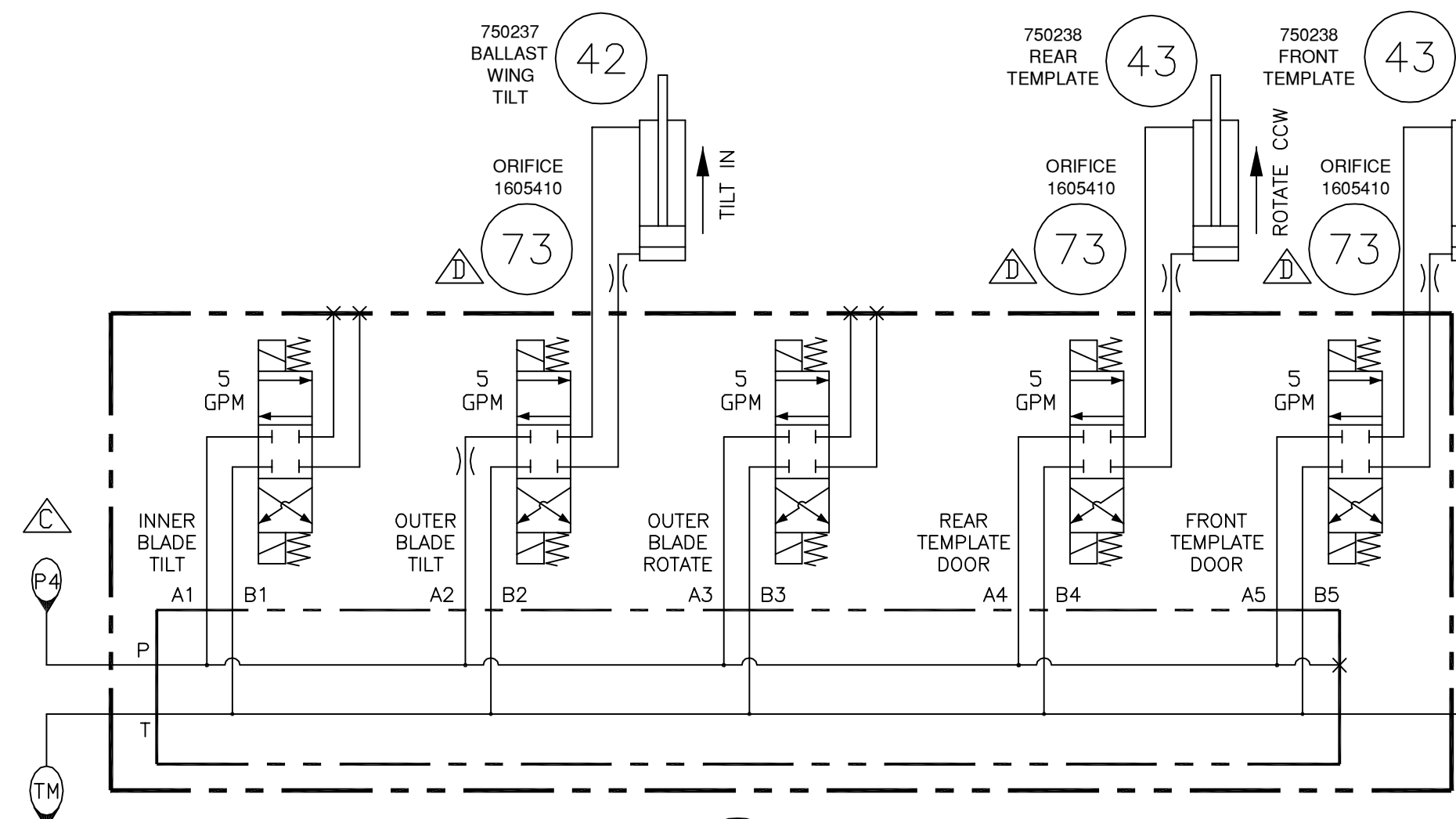
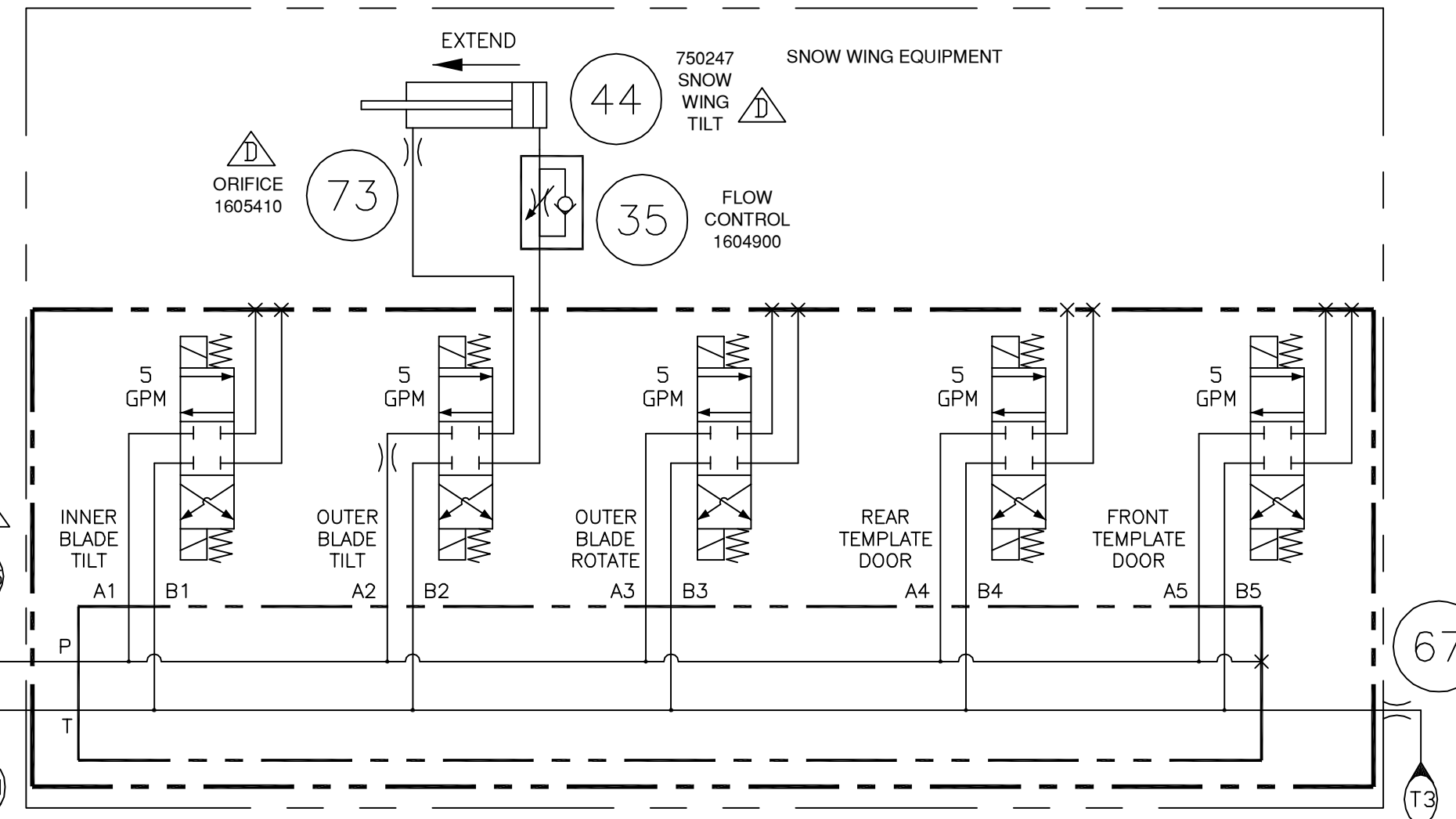
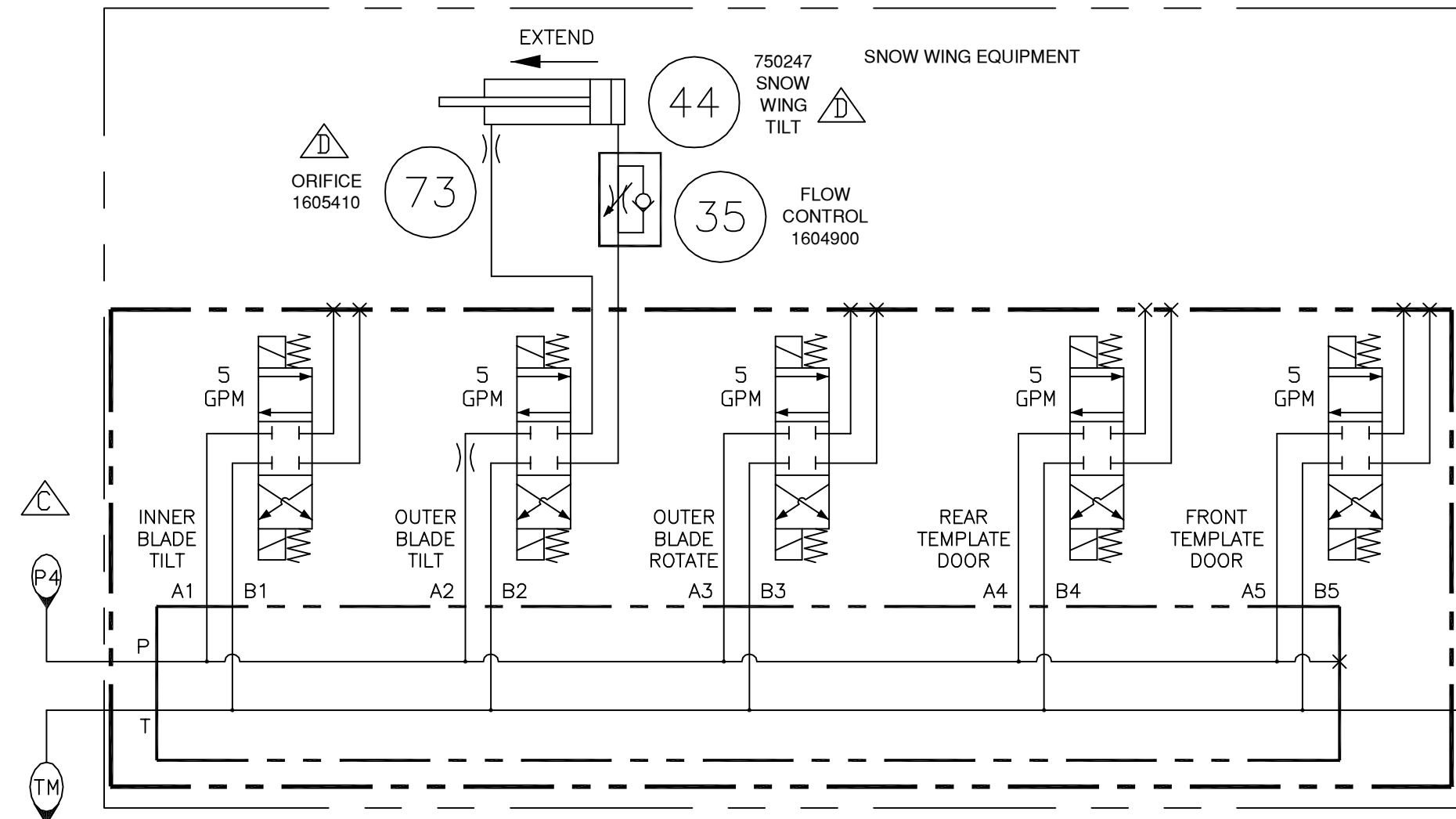
S/N 800300 & UP

REVISION HISTORY
LOCATED ON LAST SHEET

CUSTOMARY: ALL DIMENSIONS IN INCHES			 THIRD ANGLE PROJECTION	
	PRODUCT: M7			
IMPLIED TOLERANCES	DESCRIPTION:			
FRACTION ± 1/8	HYDRAULIC SCHEMATIC			
.X ± .06				
.XX ± .03				
.XXX ± .010				
250 MACHINE FINISH UNLESS OTHERWISE STATED	SIZE	SCALE	DRAWING CODE NUMBER	REV.
PLANE ANGLES +/- 1°	C	NTS	500910	E
ASSEMBLY:		X	SHEET	3B/9

NO. 500910

SHEET NO. 4A/9
 ALL INFORMATION CONTAINED ON THIS DRAWING IS CONSIDERED TO BE BOTH CONFIDENTIAL AND PROPRIETARY BY NORDCO INC. NO USE OR REPRODUCTION THEREOF MAY BE MADE WITHOUT THE EXPRESS WRITTEN CONSENT OF NORDCO INC.



41 VALVE MANIFOLD
 5 STATION DO3
 500170

41 VALVE MANIFOLD
 5 STATION DO3
 500170

RIGHT HAND WING

LEFT HAND WING

S/N 800300 & UP

FIXED BALLAST WING

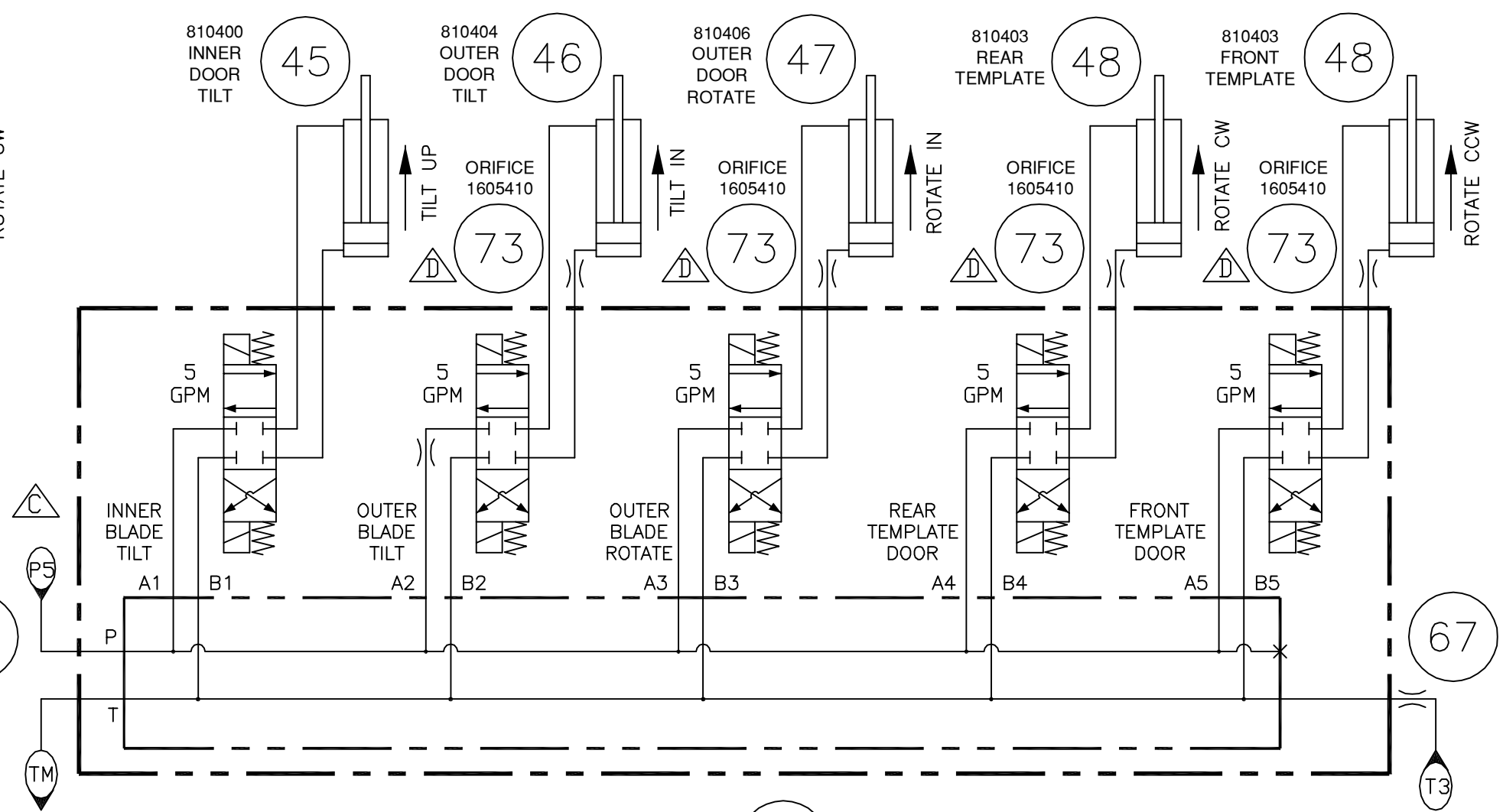
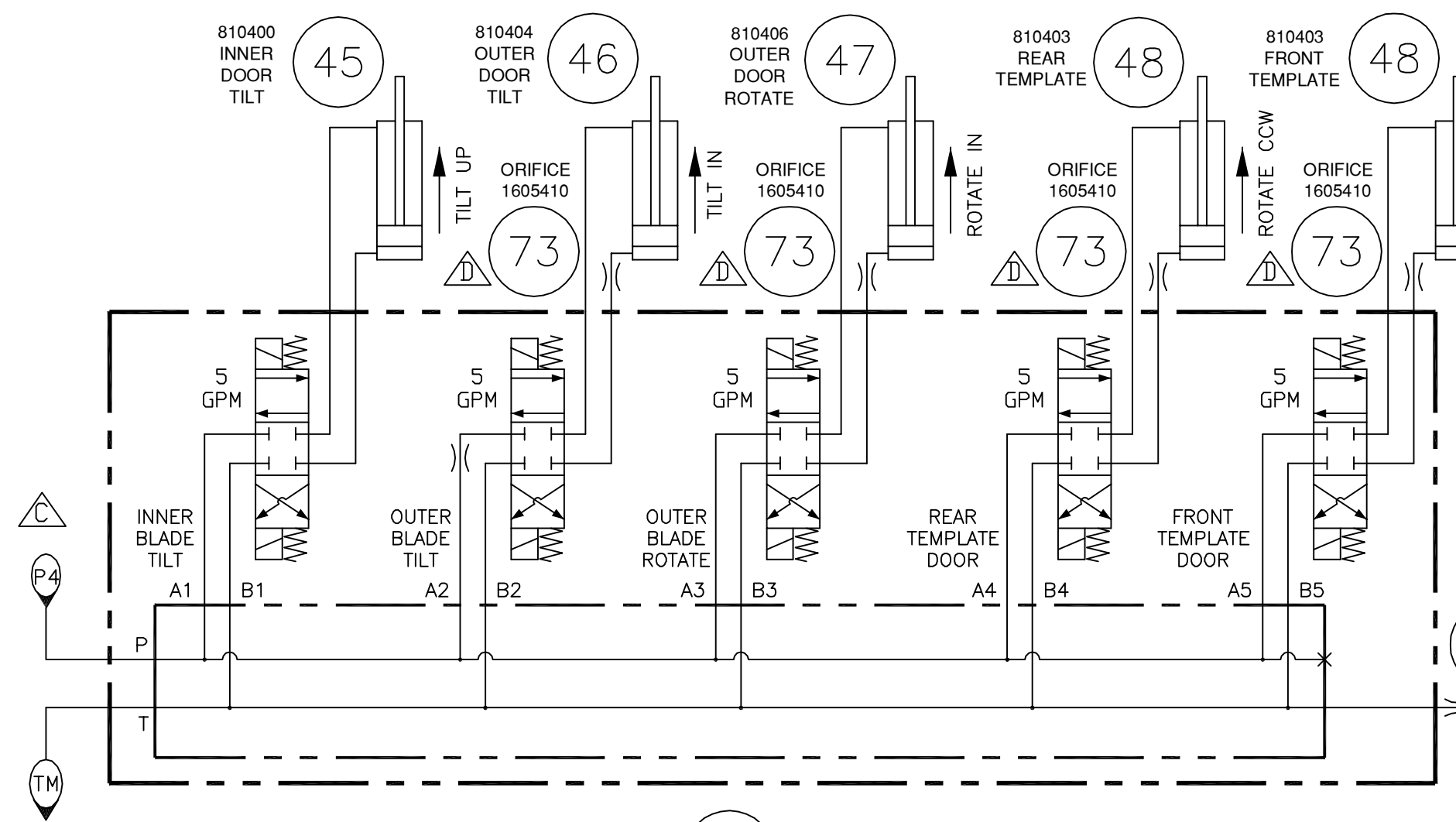
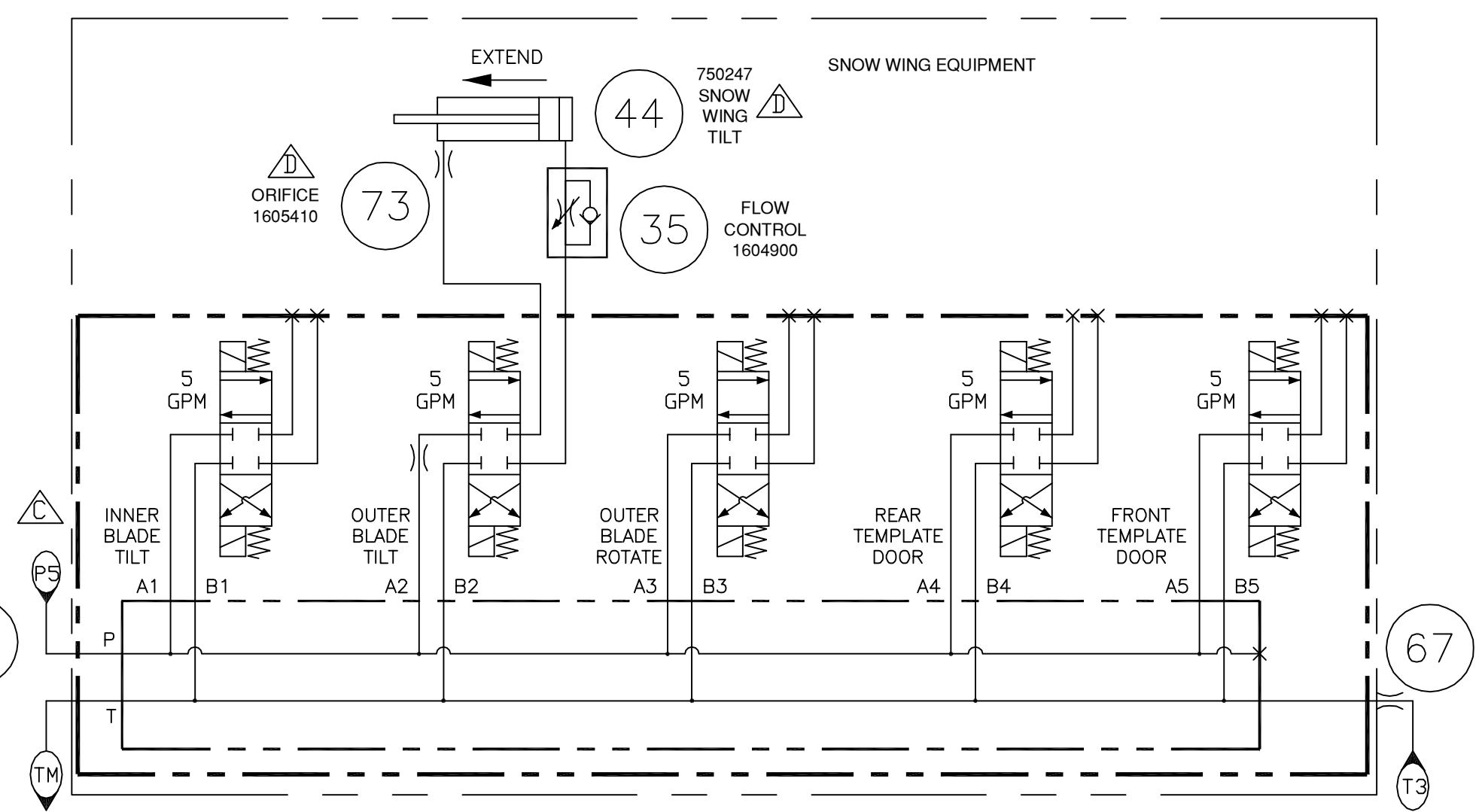
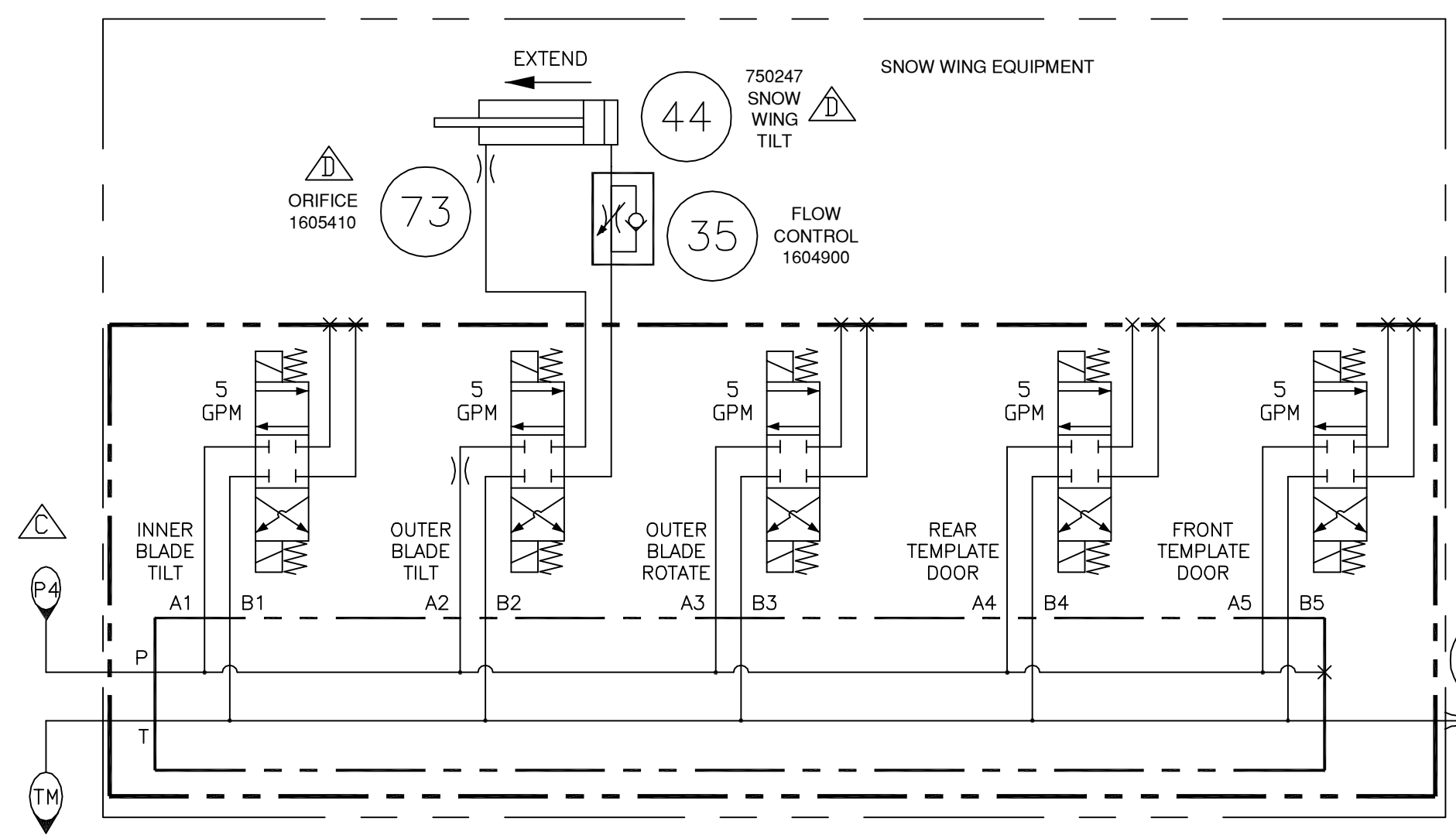
CUSTOMARY: ALL DIMENSIONS IN INCHES	NORDCO		THIRD ANGLE PROJECTION
	PRODUCT: M7		
IMPLIED TOLERANCES	DESCRIPTION: HYDRAULIC SCHEMATIC		
FRACTION : 1/8 .X : .06 .XX : .03 .XXX : .010	SIZE	SCALE	DRAWING CODE NUMBER
250 MACHINE FINISH UNLESS OTHERWISE STATED	C NTS		500910
PLANE ANGLES +/- 1°	ASSEMBLY:	X	SHEET 4A/9

REVISION HISTORY
 LOCATED ON LAST SHEET

NO. 500910

SHEET NO. 4B/9

ALL INFORMATION CONTAINED ON THIS DRAWING IS CONSIDERED TO BE BOTH CONFIDENTIAL AND PROPRIETARY BY NORDCO INC. NO USE OR REPRODUCTION THEREOF MAY BE MADE WITHOUT THE EXPRESS WRITTEN CONSENT OF NORDCO INC.



41 VALVE MANIFOLD
5 STATION DO3
500170

RIGHT HAND WING

41 VALVE MANIFOLD
5 STATION DO3
500170

LEFT HAND WING

S/N 800300 & UP

OPTIONAL
ROTATIONAL BALLAST WING

REVISION HISTORY
LOCATED ON LAST SHEET

CUSTOMARY: ALL DIMENSIONS IN INCHES	NORDCO		THIRD ANGLE PROJECTION	
	PRODUCT: M7			
IMPLIED TOLERANCES FRACTION : 1/8 .X : .06 .XX : .03 .XXX : .010	DESCRIPTION: HYDRAULIC SCHEMATIC			
	SIZE: C	SCALE: NTS	DRAWING CODE NUMBER: 500910	REV.: E
250 MACHINE FINISH UNLESS OTHERWISE STATED	PLANE ANGLES +/- 1°	ASSEMBLY: X	SHEET 4B/9	

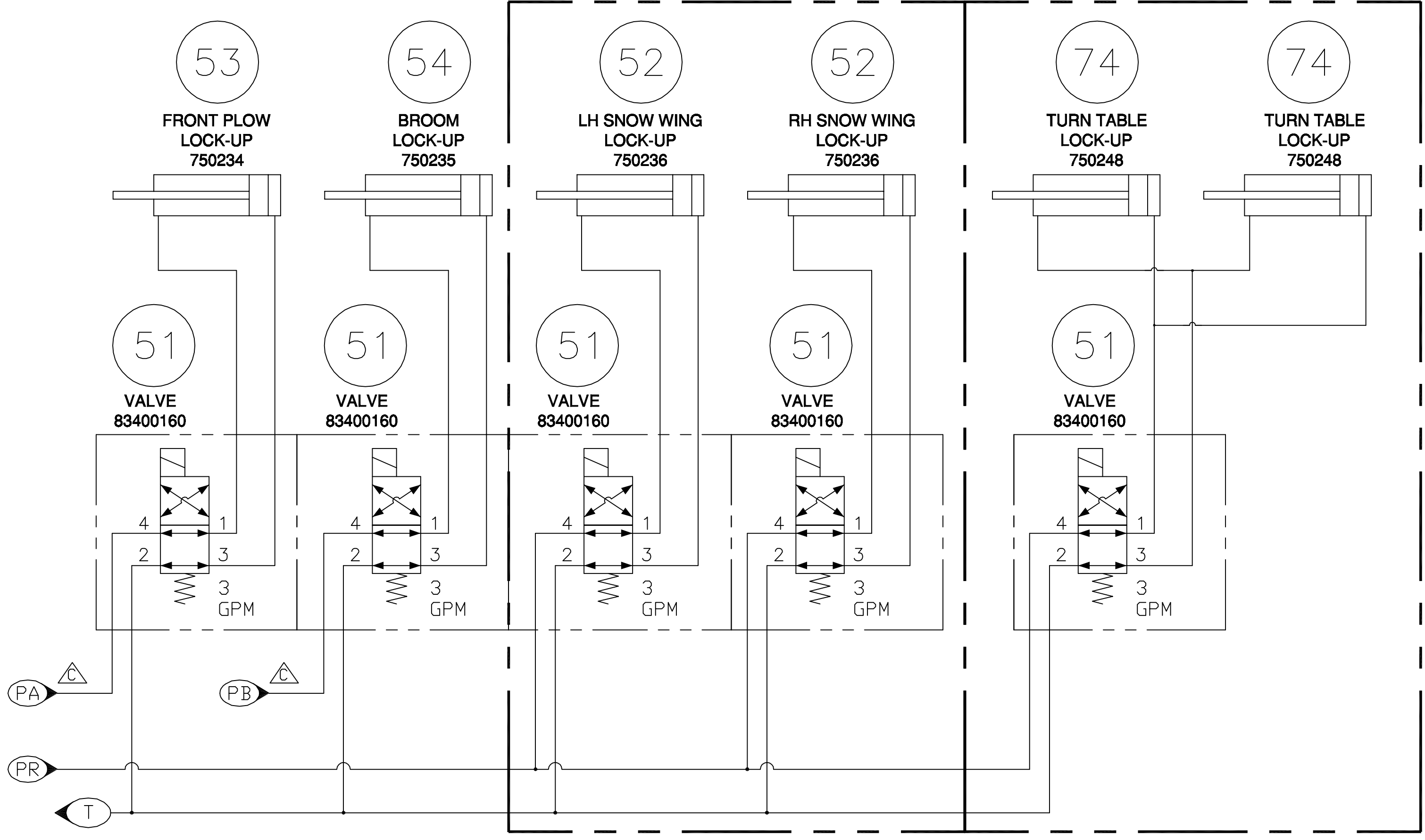
NO. 500910

SHEET NO. 5/9


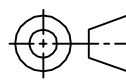
ALL INFORMATION CONTAINED ON THIS DRAWING IS CONSIDERED TO BE BOTH CONFIDENTIAL AND PROPRIETARY BY NORDCO INC. NO USE OR REPRODUCTION THEREOF MAY BE MADE WITHOUT THE EXPRESS WRITTEN CONSENT OF NORDCO INC.

OPTIONAL
SNOW WINGS W/POWER LOCK

OPTION 460424
TURN TABLE POWER LOCK



S/N 800300 & UP

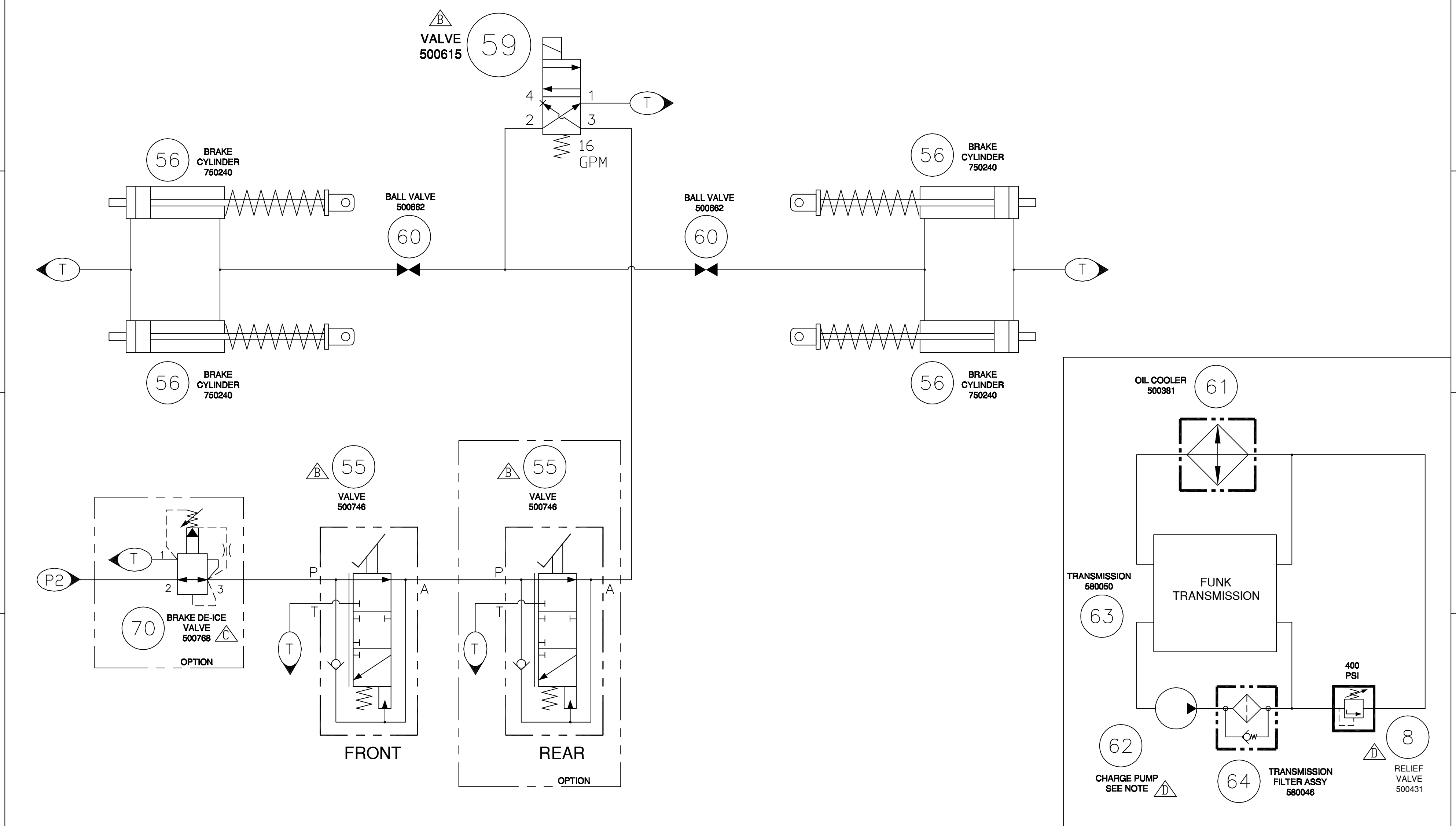
CUSTOMARY: ALL DIMENSIONS IN INCHES			 THIRD ANGLE PROJECTION
	PRODUCT: M7		
IMPLIED TOLERANCES	DESCRIPTION: HYDRAULIC SCHEMATIC		
FRACTION ± 1/8 .X ± .06 .XX ± .03 .XXX ± .010 : ±	SIZE	SCALE	DRAWING CODE NUMBER
250 MACHINE FINISH UNLESS OTHERWISE STATED PLANE ANGLES +/- 1°	C	NTS	500910
	ASSEMBLY: X		SHEET 5/9

REVISION HISTORY
LOCATED ON LAST SHEET

NO. 500910

SHEET NO. 6/9

ALL INFORMATION CONTAINED ON THIS DRAWING IS CONSIDERED TO BE BOTH CONFIDENTIAL AND PROPRIETARY BY NORDCO INC. NO USE OR REPRODUCTION THEREOF MAY BE MADE WITHOUT THE EXPRESS WRITTEN CONSENT OF NORDCO INC.



BRAKE SYSTEM

NOTE
500011 FOR S/N 800300 ONLY
500777 FOR S/N 800301 & UP

REVISION HISTORY
LOCATED ON LAST SHEET

S/N 800300 & UP

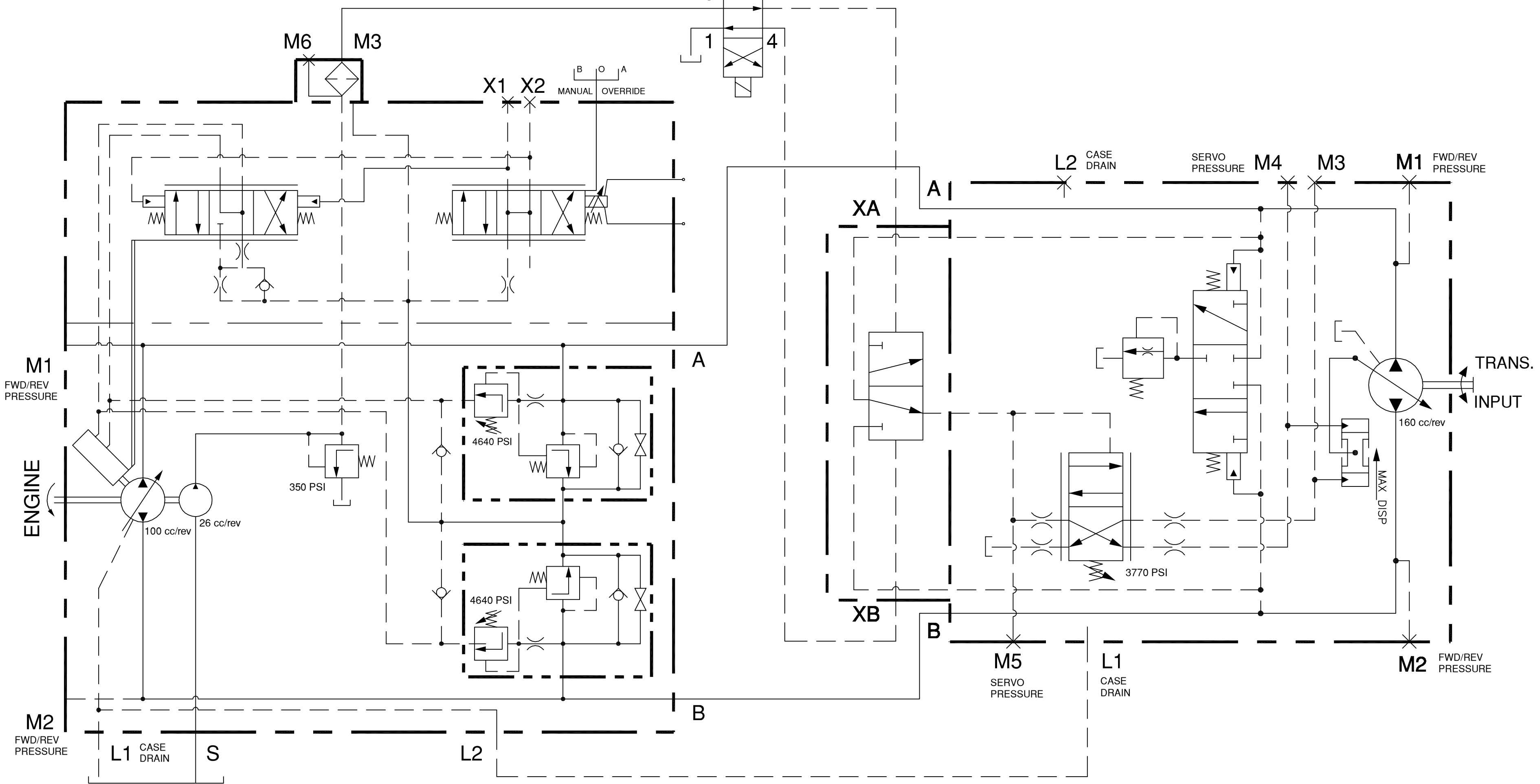
CUSTOMARY: ALL DIMENSIONS IN INCHES			THIRD ANGLE PROJECTION
IMPLIED TOLERANCES	DESCRIPTION: HYDRAULIC SCHEMATIC		
FRACTION ± 1/8 .X ± .06 .XX ± .03 .XXX ± .010	SIZE: C	SCALE: NTS	DRAWING CODE NUMBER: 500910
250 MACHINE FINISH UNLESS OTHERWISE STATED	ASSEMBLY: X	SHEET: 6/9	REV. E
PLANE ANGLES +/- 1°			

NO. 500910

SHEET NO. 7/9

ALL INFORMATION CONTAINED ON THIS DRAWING IS CONSIDERED TO BE BOTH CONFIDENTIAL AND PROPRIETARY BY NORDCO INC. NO USE OR REPRODUCTION THEREOF MAY BE MADE WITHOUT THE EXPRESS WRITTEN CONSENT OF NORDCO INC.

51 VALVE 83400160



PUMP SERIES 90

CLOCKWISE (CW) ROTATION

500649


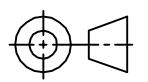
65

MOTOR SERIES 51-1

500648

66

S/N 800300 & UP

CUSTOMARY: ALL DIMENSIONS IN INCHES			 THIRD ANGLE PROJECTION
	PRODUCT: M7		
IMPLIED TOLERANCES	DESCRIPTION: HYDRAULIC SCHEMATIC		
FRACTION ± 1/8 .X ± .06 .XX ± .03 .XXX ± .010 :	SIZE	SCALE	DRAWING CODE NUMBER
250 MACHINE FINISH UNLESS OTHERWISE STATED	C	NTS	500910
PLANE ANGLES +/- 1°	ASSEMBLY:		SHEET 7/9

REVISION HISTORY
LOCATED ON LAST SHEET

5

4

3

2

1

5

4

3

2

1

G

F

E

D

C

B

A

NO. 500910

SHEET NO. 8/9

ALL INFORMATION CONTAINED ON THIS DRAWING IS CONSIDERED TO BE BOTH CONFIDENTIAL AND PROPRIETARY BY NORDCO INC. NO USE OR REPRODUCTION THEREOF MAY BE MADE WITHOUT THE EXPRESS WRITTEN CONSENT OF NORDCO INC.

5

4

3

2

1

5

4

3



2

1

ITEM NO.	NORDCO PART NO.	DESCRIPTION	STD QTY.	OPT QTY.
01	500624	HYDRAULIC OIL TANK	1	-
02	F-438	BALL VALVE	1	-
03	500619	SUCTION STRAINER	1	-
03-1	500092	ELEMENT		
04	500625	SUCTION MANIFOLD	1	-
05	500650	DUAL PUMP, PRESS.COMP.-GEAR	1	-
05-1	500626	PUMP, IMPLEMENT		
05-2	500627	PUMP, GEAR		
06	54218493	UNLOADING VALVE	2	-
06-1	25534036	COIL, DESTROKE		
07	500659	CHECK VALVE	1	-
08	500431	RELIEF VALVE	3	-
09	G-065-24V	EMERGENCY PUMP	1	-
09-1	520247	CABLE, EMERGENCY PUMP		
10	F-566	CHECK VALVE	1	-
11	3880259	PRESSURE FILTER	1	-
11-1	5193970	SENDING UNIT		
11-2	3894289	ELEMENT		
12	-	-	-	-
13	-	-	-	-
14	500775	RETURN MANIFOLD	1	-
15	500385	HYDRAULIC OIL COOLER	1	-
15-1	500383	OIL COOLER		
15-2	500384	FAN, OIL COOLER		
16	660121	TEMPERATURE SWITCH	1	-
16-1	96391051	ASSY, CONTROLLER KIT		
17	3880323	RETURN FILTER	2	-
17-1	5193970	SENDING UNIT		
17-2	3894289	ELEMENT		
18	500428	BROOM VALVE	1	-
18-1	500629	VALVE, DIR CTRL OPEN CENTER		
19	500481	BROOM VALVE SUBPLATE	1	-
20	F-233	BROOM & BLOWER MOTOR	1	-
21	500647	SNOW BLOWER VALVE	1	-
21-1	500629	VALVE, DIR CTRL OPEN CENTER		
21-2	500802	ELEMENT LOGIC N.O.		
21-3	500803	NEEDLE VALVE		
22	500406	PRESSURE REDUCING VALVE	1	-
22-1	505002	VALVE, PRES RED CARTRIDGE		
23	500014	CASE DRAIN FILTER	-	1
23-1	3890145	FILTER ELEMENT		
23-2	3880352	HEAD FILTER		
23-3	500024	VISUAL INDICATOR		
24	500175	6 STATION D03 VALVE MANIFOLD	1	-
24-1	500173	MANIFOLD, 6 STATION D03		
24-2	500172	VALVE, SOLENOID DIRECTIONAL		
25	500430-24V	FLOAT VALVE	1	-
25-1	500651	SOLENOID FOR NACHI VALVE		
26	1696782	TURN TABLE CONTROL VALVE	1	-
27	F-201	CHUTE ROTATE	1	-
28	F-611	CHECK VALVE	2	-
29	750242	TURN TABLE CYLINDERS	2	-
29-1	SK-750242	SEAL KIT		
30	7500-227	PLOW LIFT	1	-
30-1	SK-7500-227	SEAL KIT 500799		
31	7500-120	PLOW BLADE CYLINDER	2	-
31-1	SK-7500-120	SEAL KIT 500799		
32	7500-109	BROOM LIFT CYLINDER	1	-
32-1	SK-7500-109	SEAL KIT 500798		
33	750241	BROOM TILT CYLINDER	2	-
33-1	SK-750241	SEAL KIT 500799		
34	500628	4 SECTION PROPORTIONAL VALVE	1	-
35	1604900	FLOW CONTROL VALVE	5	-

ITEM NO.	NORDCO PART NO.	DESCRIPTION	STD QTY.	OPT QTY.
36	750229	BOOM LIFT CYLINDER	2	-
36-1	SK-750229	SEAL KIT	-	-
37	750239	BOOM MOTION CYLINDER	2	-
37-1	SK-750239	SEAL KIT 500799	-	-
38	7500-101	SNOW WING EXTEND CYLINDER	2	-
38-1	SK-7500-101	SEAL KIT 500801	-	-
39	F-640	QUICK ACTING DUMP VALVE	2	-
40	810401	BOOM MOTION CYLINDER	-	2
40-1	SK-810401	SEAL KIT 500799		
41	500170	5 STATION D03 VALVE MANIFOLD	2	-
41-1	500171	MANIFOLD, 5 STATION D03		
41-2	500172	VALVE, SOLENOID DIRECTIONAL		
42	750237	BALLAST WING TILT CYL	2	-
42-1	7SK-50237	SEAL KIT 500798		
43	750238	TEMPLATE DOOR CYLINDER	4	-
43-1	SK-750238	SEAL KIT 500799		
44	750247	SNOW WING TILT CYLINDER	2	-
44-1	SK-750247	SEAL KIT 500799		
45	810400	INNER DOOR TILT CYLINDER	-	2
45-1	SK-810400	SEAL KIT 500798		
46	810404	OUTER DOOR TILT CYLINDER	-	2
46-1	SK-810404	SEAL KIT 500798		
47	810406	OUTER DOOR ROTATE CYLINDER	-	2
47-1	SK-810406	SEAL KIT 500798		
48	810403	TEMPLATE DOOR CYLINDER	-	4
48-1	SK810403	SEAL KIT 500799		
49	-	-	-	-
49-1	-	-	-	-
50	-	-	-	-
51	83400160	2 POSITION VALVE	3	3
52	750236	SNOW WING LOCK-UP CYLINDER	-	2
53	750234	FRONT PLOW LOCK-UP CYLINDER	1	-
54	750235	BROOM LOCK-UP CYLINDER	1	-
55	500746	BRAKE VALVE, FOOT PEDAL	1	1
56	750240	SINGLE ACTING BRAKE CYLINDER	4	-
57	F-435	CHECK VALVE	2	-
58	-	-	-	-
59	500615	VALVE, SOLENOID 2-POSITION	1	2
59-1	500779	VALVE, 2-POSITION 4-WAYS		
59-2	520277	COIL, 24VDC DIN 43650		
60	500662	LOCKING BALL VALVE 3/4 NPT	2	-
61	500381	TRANSMISSION OIL COOLER	1	-
61-1	500382	FAN, OIL COOLER		
62	500011	CHARGE PUMP, S/N800300 ONLY	1	-
	500777	CHARGE PUMP, S/N800301 & UP	1	-
63	580050	FUNK TRANSMISSION	1	-
63-1	580056	SENDER, TEMP TRANS FUNK		
63-2	580057	GAUGE, TEMP TRANS FUNK		
64	580046	TRANSMISSION FILTER ASSY	1	-
64-1	580047	BASE, FILTER		
64-2	580048	ELEMENT FILTER		
65	500649	SERIES 90 PUMP	1	-
65-1	500072	PUMP FILTER		
66	500648	SERIES 51-1 MOTOR	1	-
67	500111	ORIFICE 0.093	4	-
68	505001	CHECK VALVE 65 PSI	1	-
69	500028	MOTOR, WHEEL HYD OMVW800	1	-
70	500768	VALVE, REDUCING WITH HANDKNOB	-	1
71	50078570	MANIFOLD TWO STATION HEADER	1	-
72	50079050	MANIFOLD HEADER 6 PORTS	1	-
73	1605410	ORIFICE, .06	8	2
74	750248	CYLINDER, TURN TABLE LOCK	-	2

S/N 800300 & UP

CUSTOMARY: ALL DIMENSIONS IN INCHES	 	
IMPLIED TOLERANCES	DESCRIPTION: HYDRAULIC SCHEMATIC	
FRACTION .X : .1/8 .XX : .06 .XXX : .03 : .010 :	SIZE	SCALE
250 MACHINE FINISH UNLESS OTHERWISE STATED	C	NTS
	DRAWING CODE NUMBER: 500910	
PLANE ANGLES +/- 1°	ASSEMBLY: X	SHEET 8/9

REVISION HISTORY
LOCATED ON LAST SHEET

NO. 500910

SHEET NO. 9/9

ALL INFORMATION CONTAINED ON THIS DRAWING IS CONSIDERED TO BE BOTH CONFIDENTIAL AND PROPRIETARY BY NORDCO INC. NO USE OR REPRODUCTION THEREOF MAY BE MADE WITHOUT THE EXPRESS WRITTEN CONSENT OF NORDCO INC.

REVISION TABLES

ECD	-	REV -
DRAWN BY:	CHECKED BY:	APPROVED BY:
CP	JW	
23-NOV-06	08-DEC-06	
SHEET	CHANGE	
ALL	NEW ISSUE	

ECD	-	REV A
DRAWN BY:	CHECKED BY:	APPROVED BY:
CP	JW	
02-MAR-07	05-MAR-07	
SHEET	CHANGE	
ALL	REVISION HISTORY MOVED TO LAST SHEET	
1	REMOVED ITEMS 12 & 13. ADDED ITEMS 6 & 68	
3A	REMOVED ITEM 8 QTY 2	
3B	REMOVED ITEM 8 QTY 2	
6	REMOVED ITEM 59. ADDED ITEM 6	
8	ITEM 6: QTY 3 WAS 1. ITEM 8: QTY 2 WAS 4. REMOVED ITEMS 12, 13 & 59. ADDED ITEM 68	
9	THIS SHEET ADDED	



ECD	-	REV B
DRAWN BY:	CHECKED BY:	APPROVED BY:
CP		
16-JUL-07		
SHEET	CHANGE	
6	REMOVED ITEMS 6 (1X), 35 (1X), 51 (1X), AND 58 (2X). ITEM 55 WAS 500661. ADDED ITEM 59 (1X)	
8	ITEM 6: QTY 2 WAS 3. ITEM 35: QTY 5 WAS 6. ITEM 41: QTY 2 WAS 1. ITEM 51: QTY 3 WAS 4. REMOVED ITEM 58. ADDED ITEM 59. ITEM 55 WAS 500661	

ECD	80046	REV C
DRAWN BY:	CHECKED BY:	APPROVED BY:
CP		
26-OCT-07		
SHEET	CHANGE	
1	ITEM 69 REPLACED ITEM 20. ADDED MANIFOLDS ITEMS 71 AND 72. ADDED PRESSURE LINES P3-P6, PA, PB & PR. ITEM 22 CORRECTION: PORT 1 WAS TM, PORT 3 WAS PRESS. ITEM 6: PRESS LINE WAS FROM PRESSURE FILTER INLET (ITEM 11)	
2	ITEM 26: P6 WAS P1	
3A	P3 WAS P1	
3B	P3 WAS P1	
4A	RH WING: P4 WAS P1. LH WING: P5 WAS P1	
4B	RH WING: P4 WAS P1. LH WING: P5 WAS P1	
5	PA AND PB WERE PR	
6	ADDED ITEM 70 (BRAKE DE-ICE OPTION)	
8	ITEM 20: QTY 1 WAS 2. ADDED ITEMS 69 TO 72	

ECD	80050	REV D
DRAWN BY:	CHECKED BY:	APPROVED BY:
CP		
01-APR-08		
SHEET	CHANGE	
1	ITEM 8: 2900 PSI WAS 2700. ITEM 14: 500775 WAS 810577P	
2	TURNTABLE INTERLOCK OPTION ADDED	
4A	ITEM 44: 750247 WAS 7500-68. ITEM 73 ADDED	
4B	ITEM 44: 750247 WAS 7500-68. ITEM 73 ADDED	
6	ITEM 8, RELIEF VALVE, ADDED TO TRANSMISSION SCHEMATIC. ADDED NOTE FOR CHARGE PUMP	
8	ITEM 8: QTY 3 WAS 2. ITEM 14: 500775 WAS 810577P. ITEM 44: 750247 WAS 7500-68. ITEM 59: OPT QTY 2 ADDED. ITEM 62: 'S/N800300 ONLY' ADDED TO 500011. 500777 ADDED. ITEM 73: STD QTY 8 AND OPT QTY 2 ADDED. SERVICE P/N ADDED TO VARIOUS ITEMS	

ECD	80050	REV E
DRAWN BY:	CHECKED BY:	APPROVED BY:
CP		
05-NOV-08		
SHEET	CHANGE	
5	REMOVED ARTICULATED TEMPLATE DOORS OPTION. TURN TABLE POWER LOCK OPTION ADDED	
8	REMOVED ITEMS 49, 49-1 AND 50. ITEM 51, OPTION QTY 3 WAS 2. ADDED ITEM 74, OPTION QTY 2	

S/N 800300 & UP

CUSTOMARY: ALL DIMENSIONS IN INCHES	 				
			PRODUCT: M7		
IMPLIED TOLERANCES	DESCRIPTION: HYDRAULIC SCHEMATIC				
FRACTION	± 1/8	SIZE	SCALE	DRAWING CODE NUMBER	REV.
.X	± .06	C	NTS	500910	E
.XX	± .03	PLANE ANGLES +/- 1°		ASSEMBLY: X	SHEET 9/9
.XXX	± .010				