

**FIGURE 1-2A. OPERATOR STATION
SWING SEAT OPTION #2
S/N 680287 and Above**

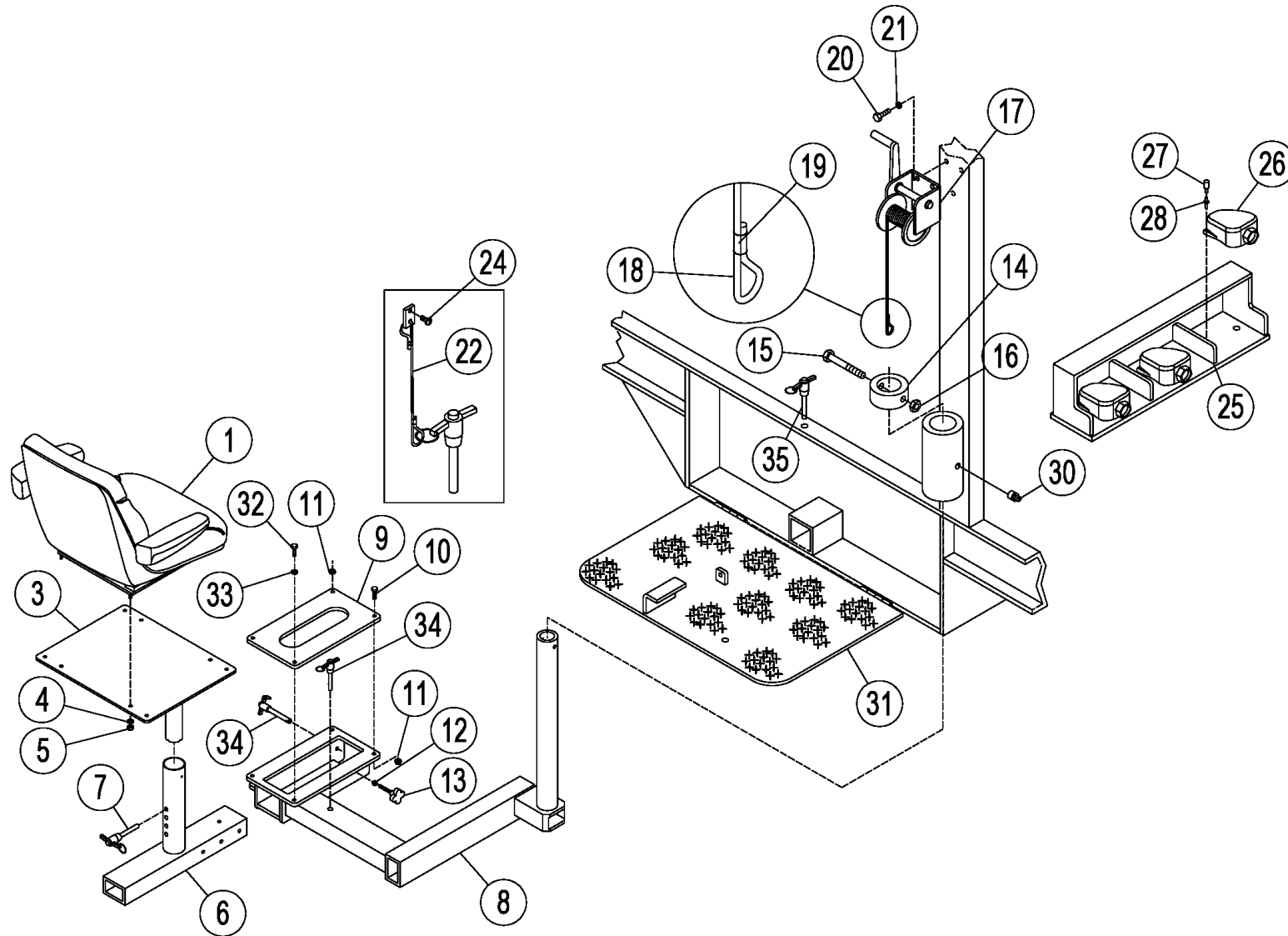


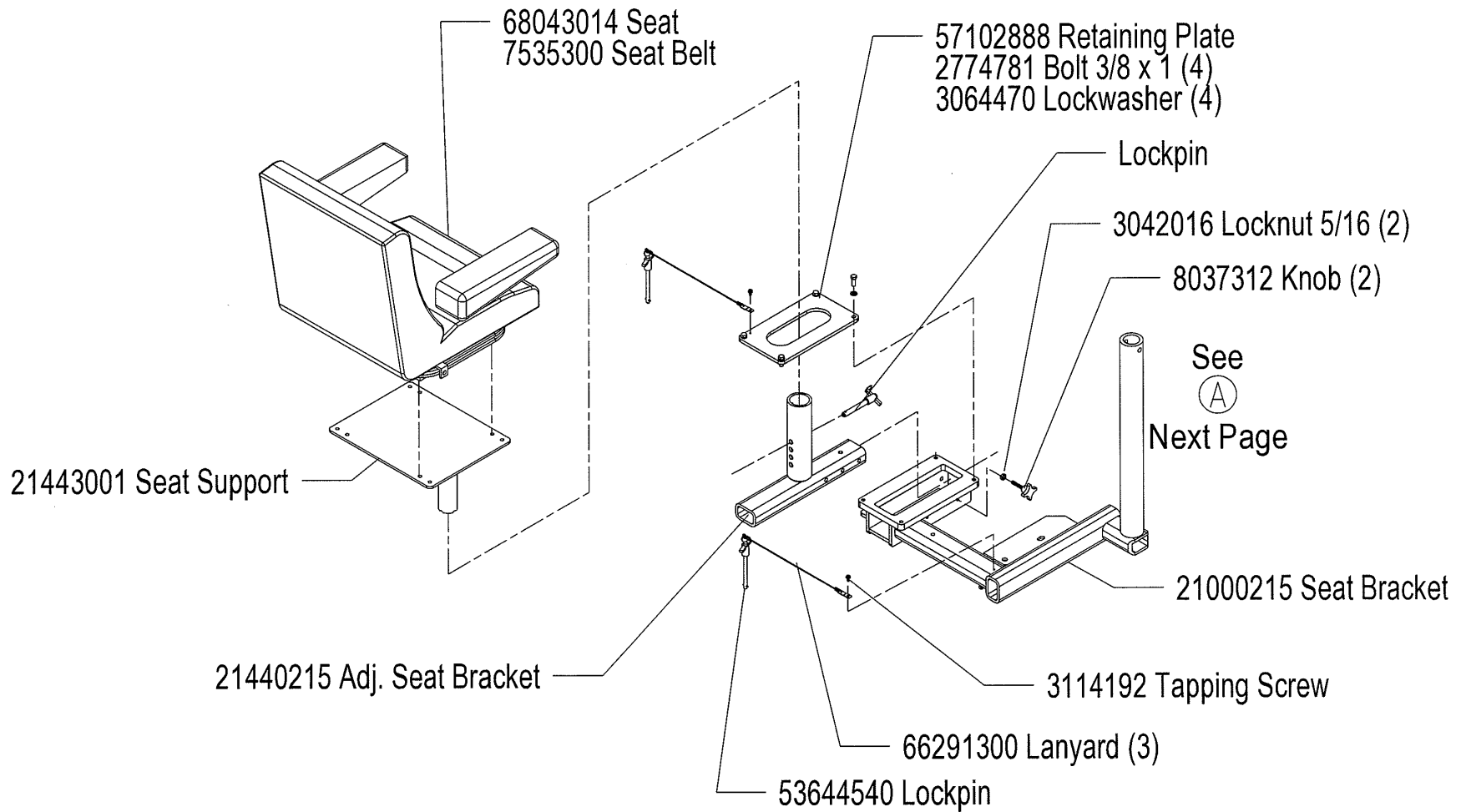


FIGURE 1-2A. OPERATOR STATION SWING SEAT OPTION #2 S/N 680287 and Above

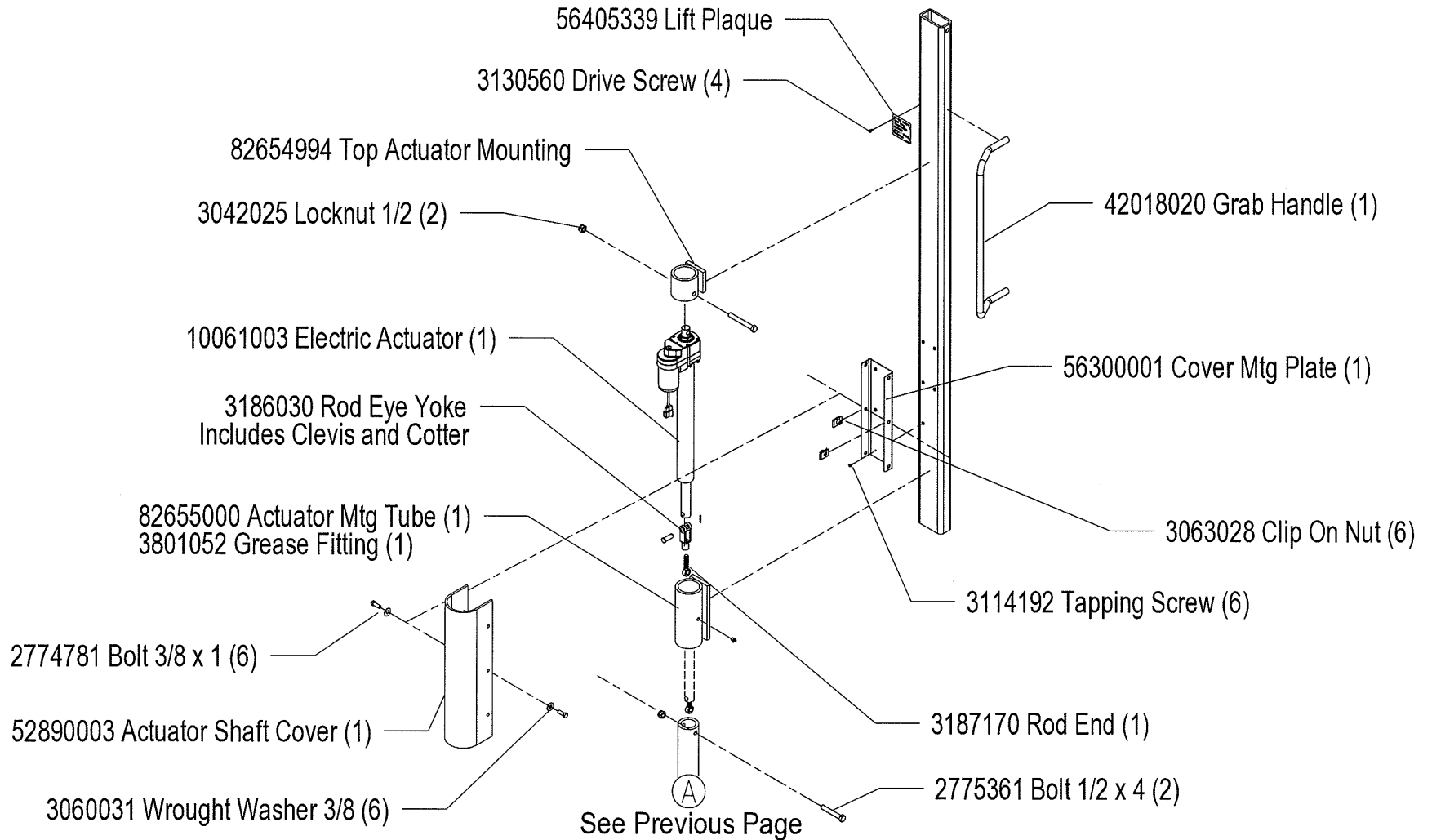
ITEM NO.	PART NO.	DESCRIPTION	UNITS PER ASSY
1A	68043015	SEAT, Operator (USSC 9000).....	1
1B	68043003	SEAT, Operator (Seats Inc.)	1
2*	7535300	SEATBELT (w/Retractor)	1
3	21443001	SUPPORT, Seat.....	1
4	3064467	LOCKWASHER, 5/16.....	4
5	3001016	NUT, Hex 5/16-18.....	4
6	21000215	BRACKET, Swing Seat Adj.	1
7	5364 5050	PIN, Lock.....	1
8	21440215	BRACKET, Adjustable Swing Seat.....	1
9	57102888	PLATE, Swing Seat Retaining.....	1
10	2774821	CAPSCREW, HH 3/8 x 2.....	3
11	3042020	NUT, Hex 5/16-18.....	3
12	3042016	LOCKNUT, 5/16-18	2
13	8037312	KNOB	2
14	82654701	COLLAR, Locking.....	1
15	2774861	CAPSCREW, Hex Hd 3/8 x 4.....	1
16	3042020	LOCKNUT, Hex 3/8-16.....	1
17	86970002	WINCH, Hand.....	1
18	8029090	CABLE, Winch.....	1
19	8028002	CLAMP, Winch Cable.....	1
20	3065907	LOCKWASHER, 5/16.....	3
21	2774521	CAPSCREW, HH 5/16 x 3/4.....	3
22	66291300	LANYARD, Lockpin w/Tie-Down	4
24	3114192	SCREW, Tapping #8-3/8.....	4
25	38042310	GUARD, Triple Footswitch	1
26	78893500	SWITCH, Foot.....	3
27	2837619	SCREW, Machine #10 x 1/2.....	6
28	3064458	LOCKWASHER, #10.....	6
29*	20470027	BOX, Manual Storage.....	1
30	3801052	FITTING, Grease.....	1
31	57740500	PLATFORM, Operator Hinged	1
32	2774781	CAPSCREW, HH 3/8 x 1.....	1
33	3064470	LOCKWASHER, 3/8.....	1
34	53644540	LOCKPIN, 3/8 x 4.....	3

ITEM NO.	PART NO.	DESCRIPTION	UNITS PER ASSY
35	53644940	LOCKPIN, 1/2 x 2.....	1
36*	14372412	BAR, Seatbelt Anchor	1
37*	13175008	BAR, Flat.....	1

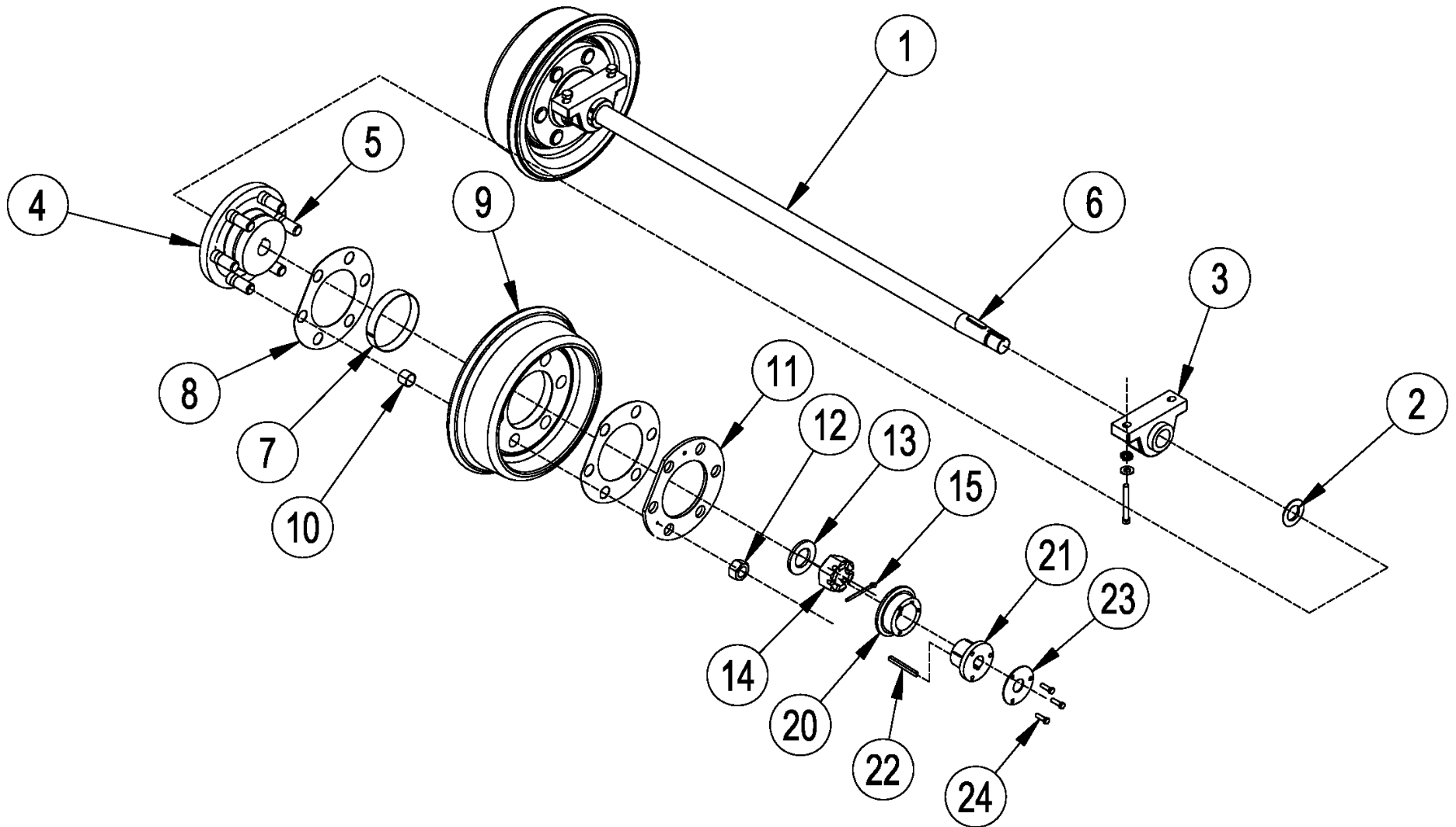
**FIGURE 1-2B. OPERATOR STATION
SWING SEAT (Option #3 - Electrical)
S/N 680287 and Above**



**FIGURE 1-2B. OPERATOR STATION
SWING SEAT (Option #3 - Electrical)
S/N 680287 and Above**



**FIGURE 2-1B. AXLES
w/Outer Drive
S/N 680314 and Above**



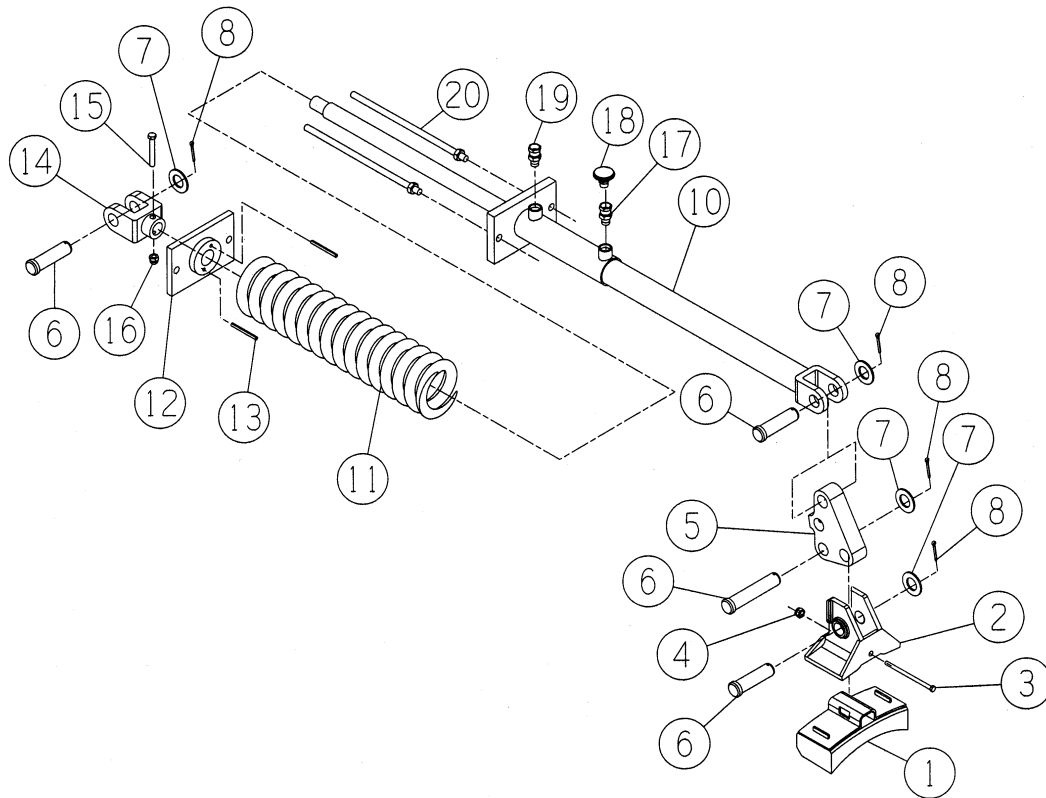


**FIGURE 2-1B. AXLES
w/Outer Drive
S/N 680314 and Above**

ITEM NO.	PART NO.	DESCRIPTION	UNITS PER ASSY
1	68742660	Outer Drive Axle	1
2	63905656	Steel Spacers	2
3	5398885	Wheel Bearing.....	2
4	45744765	Wheel Hub	2
5	2480355	Studs	6
6	3350680	Square Key	2
7	76300105	Insulating Strip.....	2
8	46230054	Insulator Ring w/Flat.....	2
9	86969201	Demountable Wheel.....	2
10	22109710	Bushing	12
11	63424124	Retaining Ring w/Flat	2
12	51482612	Finish Hex Nut 1-1/8.....	12
13	86072290	Steel Wheel Washer	2
14	51737920	Axle Nut	2
15	3071035	Cotter Pin	2
16	2776121	Bolt, Hx Hd 3/4 x 4-1/2	4
17	3060488	SAE 3/4 Washer.....	4
18	3065928	HD Lockwasher	4
19*	3043028	Security Locknut.....	4
20	75108880	Axle Drive Sprocket.....	1
21	73045665	Bushing	1
22	47054870	Key	1
23	57109191	Axle Key Retainer.....	1
24	2774761	Bolt, Hex Hd 3/8 x 1/2.....	3
25*	3065910	Lockwasher 3/8	3
26*	3060470	SAE Washer.....	3

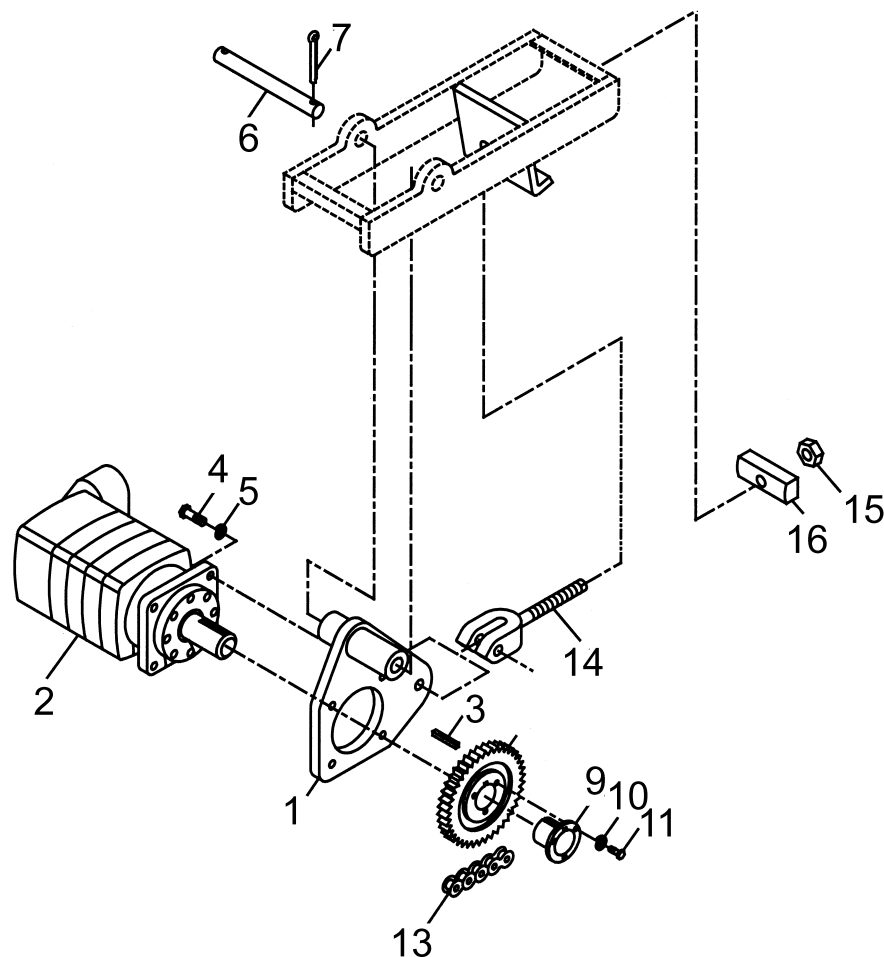
Quantities Shown for One Axle, Assembly includes 2

FIGURE 3-1B. COBRA BRAKES S/N 680314 and Above



ITEM NO.	PART NO.	DESCRIPTION	UNITS PER MACHINE
1	70900075	Brake Shoe	4
2	21800097	Cobra Brake Head	4
3	2774371	HH Capscrew 1/4 x 4-1/2	4
4	3042013	Hex Locknut 1/4-20	4
5	47881300	Brake Lever	4
6	3301881	Brake Pivot Pin 1" x 4"	12
7	3060500	SAE Washer 1"	12
8	3070623	Cotter Pin 3/16 x 1-1/2	12
9	96680446	Brake Cylinder/Spring Kit	2
10	28551858	Brake Cylinder	1
--	68010073	Seal Kit	1
11	3627950098	Brake Spring	1
12	61567585	Spring Retainer	1
13	3393609	Spring Pin 1/4 x 1-1/2	2
14	66058006	Cylinder Rod End	1
15	2774321	HH Capscrew 1/4-20 x 2	1
16	3042013	Hex Locknut 1/4-20	1
17	2074749	Swivel Adapter O-Ring -NPT	1
18	21880006	Breather	1
19	2076240	Adapter O-Ring - JIC	1
20	14060106	Brake Cylinder Lockup Bar	4
21*	1605826	Ball Valve (Remote)	1

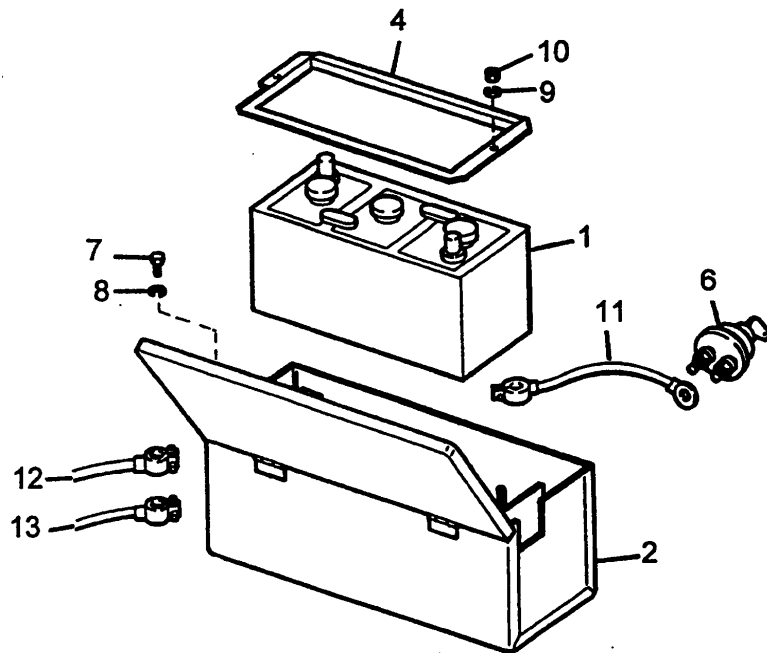
FIGURE 5-1. AXLE DRIVE
S/N 680287 and Above



ITEM NO.	PART NO.	DESCRIPTION	UNITS PER MACHINE
1	21451400	BRACKET, Propulsion Motor (Rear)	1
2	50230073	MOTOR, Propulsion (Char-Lynn 6000)	2
3	3350235	. KEY	1
--	68010002	. KIT, Shaft Seal.....	1
4	2775311	CAPSCREW, Hex Head ½ x 1-3/4.....	4
5	3064476	LOCKWASHER, ½	4
6	54262965	PIN, Propulsion Motor Pivot.....	1
7	3070623	PIN, Cotter 3/16 x 1-1/2	2
8	75107485	SPROCKET, Motor Drive (Single 17T).....	1
9	73038564	. BUSHING	1
10	2774821	. CAPSCREW, Hex Head 3/8 x 2	3
11	3065910	. LOCKWASHER, 3/8	3
12	75108880	SPROCKET, Axle Drive (28T 80#).....	1
13	24262832	CHAIN, #80 Single (51 Pitches)	1
14	66056605	TENSIONER, Chain.....	1
15	3042031	LOCKNUT, Hex ¾-10	1
16	18780605	BLOCK, Stop.....	1
17	3001051	NUT, Hex ¾-10	2
18*	38033803	GUARD, Chain.....	1
19*	3801110	FITTING, Grease	1

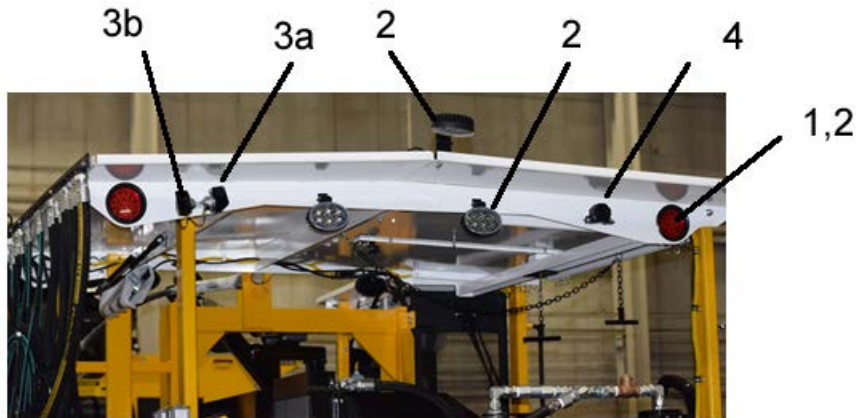
ⓘ Axle Drive Sprocket Shown on Figure 2, Axles.

FIGURE 6-1. BATTERY BOX
S/N 680287 and Above



ITEM NO.	PART NO.	DESCRIPTION	UNITS PER ASSY
1	5198220	. BATTERY (12V 204 AMP).....	1
2	20093000	. BATTERY BOX.....	1
3	56126400	. PLATE, Disconnect Switch Mounting.....	1
4	24850007	. BRACKET, Battery.....	1
5	56406490	. PLAQUE, Battery On/Off	1
6	5169943	. SWITCH, Battery Disconnect	1
7	2774271	. CAPSCREW, Hex Head 1/4 x 3/4	2
8	3064464	. LOCKWASHER, 1/4	2
9	3064467	. LOCKWASHER, 5/16	2
10	3001016	. NUT, Hex 5/16-18	2
11	87120356	. CABLE, Black Battery (20" - Neg)	1
12	87120671	. CABLE, Black Battery (86" - Neg)	1
13	87120670	. CABLE, Red Battery (85" - Pos)	1

FIGURE 6-2B. HORNS AND LIGHTS S/N 680314 and Above



ITEM NO.	PART NO.	DESCRIPTION	UNITS PER ASSY
1	5190452	LIGHTS, Led Marker 12V	4
--	5190440	GROMMET	4
--	5166792	CONNECTOR, Plug	4
2	5190355	LIGHTS, Halogen Travel 12V	4
3A	5190023	HORN, Lo Pitch 12V	2
3B	5190022	HORN, Hi Pitch 12V	2
4	5190063	ALARM, Back-Up (Optional).....	1
5*	5190502	LIGHT, Strobe.....	1
6*	5190355	LIGHT, Work	2
7*	5190355	LIGHT, Flood (Optional)	AR

FIGURE 6-3. DECALS AND PLAQUES

Stock code	Description	Long description	Quantity per	U/m
29300007	DECAL,NOTICE AA SLIDING CANOPY	RETRACT BEFORE TRAVELING	1.00	EA
29300015	DECAL,NORDCO LARGE RED/BLK	USE DWG 9749 1008	4.00	EA
29300196	PLAQUE,PHONE NUMBERS SERVICE	ALL MACHINES	2.00	EA
56403860	PLAQUE,TOGGLE LINKAGE ADJUST PLAQUE,SET OFF VALVE		1.00	EA
56403981	INSTRUCTN		1.00	EA
56404023	CHART,SEQUENCE		1.00	EA
56404927	PLAQUE,SUCTION STRAINER VALVE	OPEN/CLOSE 3.25 X 5.0	1.00	EA
56405046	PLAQUE,ENGINE OIL SPEC STD		1.00	EA
56405047	PLAQUE,HYD OIL ID		1.00	EA
56405048	PLAQUE,GREASE TYPE ID		1.00	EA
56405049	PLAQUE,FILTERING LOOP PLAQUE,BATTERY BOX"JUMP START"		2.00	EA
56405131	PLAQUE,LUBRICATION AA-E	FOR S/N680240 & UP	1.00	EA
56405187	PLAQUE,LOCK-UP TABLE AA-F	RE: LOCATION-REASON FOR LOCKUP	1.00	EA
56420003	DECAL,DANGER	"DO NOT CRAWL UNDER"	2.00	EA
56420006	DECAL,DANGER	"SERVICING SHUT DOWN"	2.00	EA
56420007	DECAL,WARNING FOR	EXHAUST EMISSIONS	2.00	EA
56420011	DECAL,LOCKOUT BATTERY BOX		1.00	EA
56420012	DECAL,LOCKUP POINTS PLAQUE, WARNING PUMP TURN OFF	WHEN IDLING 30 MIN PLUS	6.00	EA
56420054	DECAL,CAUTION"UNPLUG BEF WELD"	"UNPLUG BEFORE WELDING"	1.00	EA
56424501	INSTRUCTIONS,AA INITIAL SETUP	AND ADJUSTMENTS SHEETS	2.00	EA
30600009			1.00	EA



FIGURE 7JD-2. JOHN DEERE ENGINE Tier 2 PE4045DF270

NOTICE

Due to the different configurations available for engines, drawings will not be provided. The following list details this engine only.
When calling Superior Diesel for support on this Engine, Reference the ES Code number listed below. Make certain you Have the S/N of the engine available at time of service call.

ES30418

Rated Horsepower: 76hp @ 2200 rpm
Operating RPM: 2400 rpm high idle
1100 rpm low idle

ITEM NO.	PART NO.	DESCRIPTION	UNITS PER ASSEMBLY
15	82653505	Exhaust Elbow Extension.....	1
16	82653462	Exhaust Pipe	1
17	24544245	Exhaust Clamp 4".....	2
18	50480822	Muffler	1
19	24709823	Muffler Clamp.....	2

CONSUMABLES/WEAR ITEMS:

Contact Nordco Parts

ITEM NO.	PART NO.	DESCRIPTION	UNITS PER ASSEMBLY
1	31750266	John Deere 4045 Tier 2.....	1
2	5128792	105 Amp Circuit Breaker.....	1
3	Call Nordco	120 Amp Alternator	1
4	74130039	Throttle Solenoid Trombetta	1
5	96350866	Funk Pump Drive	1
--	10210155	Shaft and Hub	1
--	10213774	Flywheel Cover.....	1
--	29813157	Drive Plate.....	1
--	37030248	O-Ring.....	1
--	10213812	"C" Pump Pad	1
6	60570027	Radiator.....	1
7	21462648	Left Upper Radiator Support	1
8	5193951	Oil Pressure Warning Switch Sender.....	1
9	5193966	Water Temp Warning Switch Sender	1
10	1614485	Oil Drain Valve	1
11	22311169	Engine Harness (Logic Box to Eng.).....	1
12	42016802	Pull Handles	4
13	47520605	Latch	2
14	32121055	Air Cleaner	1

FIGURE 7JD-3. JOHN DEERE ENGINE Tier 3 PE4045TF280

NOTICE

Due to the different configurations available for engines, drawings will not be provided. The following list details this engine only.
When calling Superior Diesel for support on this Engine, Reference the ES Code number listed below. Make certain you Have the S/N of the engine available at time of service call.

ES30418

Rated Horsepower: 88hp @ 2400 rpm
Operating RPM: 2400 rpm high idle
1100 rpm low idle

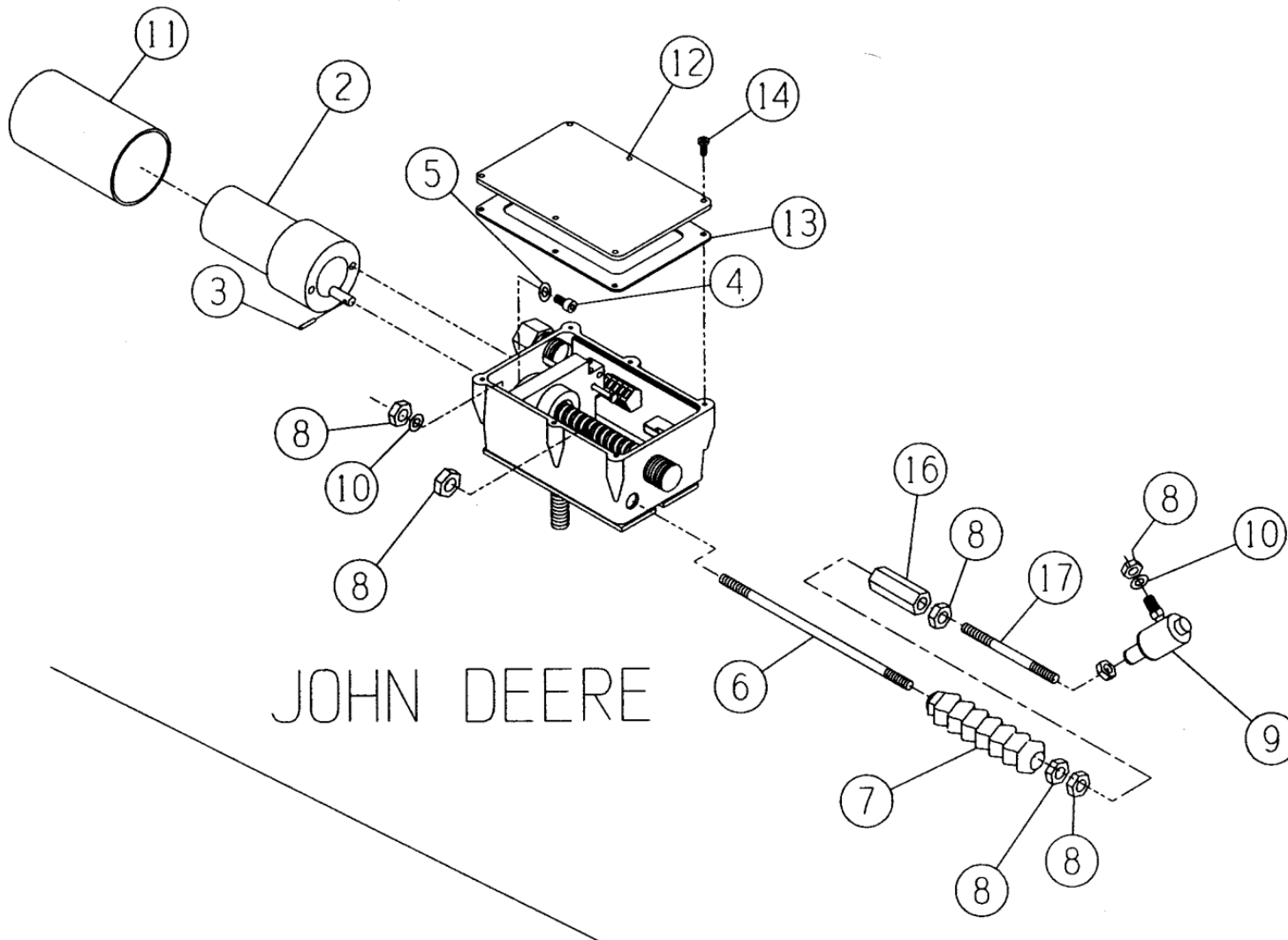
ITEM NO.	PART NO.	DESCRIPTION	UNITS PER ASSEMBLY
1	31750266	John Deere 4045 Tier 3.....	1
2	5128792	105 Amp Circuit Breaker.....	1
3	Call Nordco	120 Amp Alternator	1
5	96350866	Funk Pump Drive	1
--	10210155	Shaft and Hub	1
--	10213774	Flywheel Cover.....	1
--	29813157	Drive Plate.....	1
--	37030248	O-Ring.....	1
--	10213812	"C" Pump Pad	1
6	60570027	Radiator.....	1
7	21462648	Left Upper Radiator Support	1
8	5193951	Oil Pressure Warning Switch Sender.....	1
9	5193966	Water Temp Warning Switch Sender	1
10	1614479	Oil Drain Valve	1
11	22311169	Engine Harness (Logic Box to Eng.)	1
12	42016800	Pull Handles	4
13	47520605	Latch	2
14	32121055	Air Cleaner	1

ITEM NO.	PART NO.	DESCRIPTION	UNITS PER ASSEMBLY
15	31341999	Exhaust Elbow.....	1
16	60-0292	Exhaust Pipe	1
17	24544245	Exhaust Clamp 4".....	2
18	50480875	Muffler	1
19	MC-31/2	Muffler Clamp.....	2

CONSUMABLES/WEAR ITEMS:

25	RE522868	Final Fuel Filter	1
27	3894507	Oil Filter	1
28	R135681	Fan Belt	1
30	3894509	Primary Air Filter	1
31	3894510	Safety Air Filter	1
32	96411246	Coolant Filter	1

FIGURE 7JD-GENERAL. JOHN DEERE ENGINE ADDCO THROTTLE S/N 680314 and Above



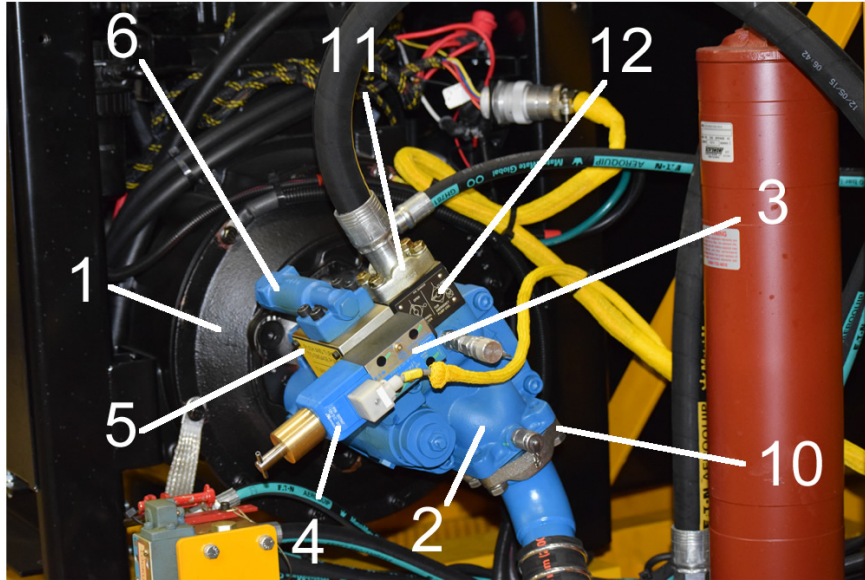
JOHN DEERE



**FIGURE 7JD-GENERAL. JOHN DEERE ENGINE
 ADDCO THROTTLE
 S/N 680314 and Above**

ITEM NO.	PART NO.	DESCRIPTION	UNITS PER ASSY
1	10061013	12V Addco Throttle	1
2	74130050	Motor	1
3	3384186	Spring Pin, 3/32 x 1/2"	1
4	2782016	Soc. Head Capscrew, #10-32 x 1/2"	2
5	3066568	#10 Internal Tooth Lockwasher	2
6	65883587	Control Rod	1
7	84312015	Bellows	1
8	3027175	1/4"-28 Hex Jam Nut	6
9	46861010	90° Swivel Ball Joint Linkage	1
10	86187630	1/4" Spring Lockwasher	2
11	19891550	Rubber Boot	1
12	27230198	Actuator Cover	1
13	35688268	Cover Gasket	1
14	2844437	#6-32 x 3/8 Pan Head Screw	6
15*	59040181	Actuator Circuit Board 12V	1
16	51471543	Coupling Nut	1
17	65882265	Threaded Rod	1

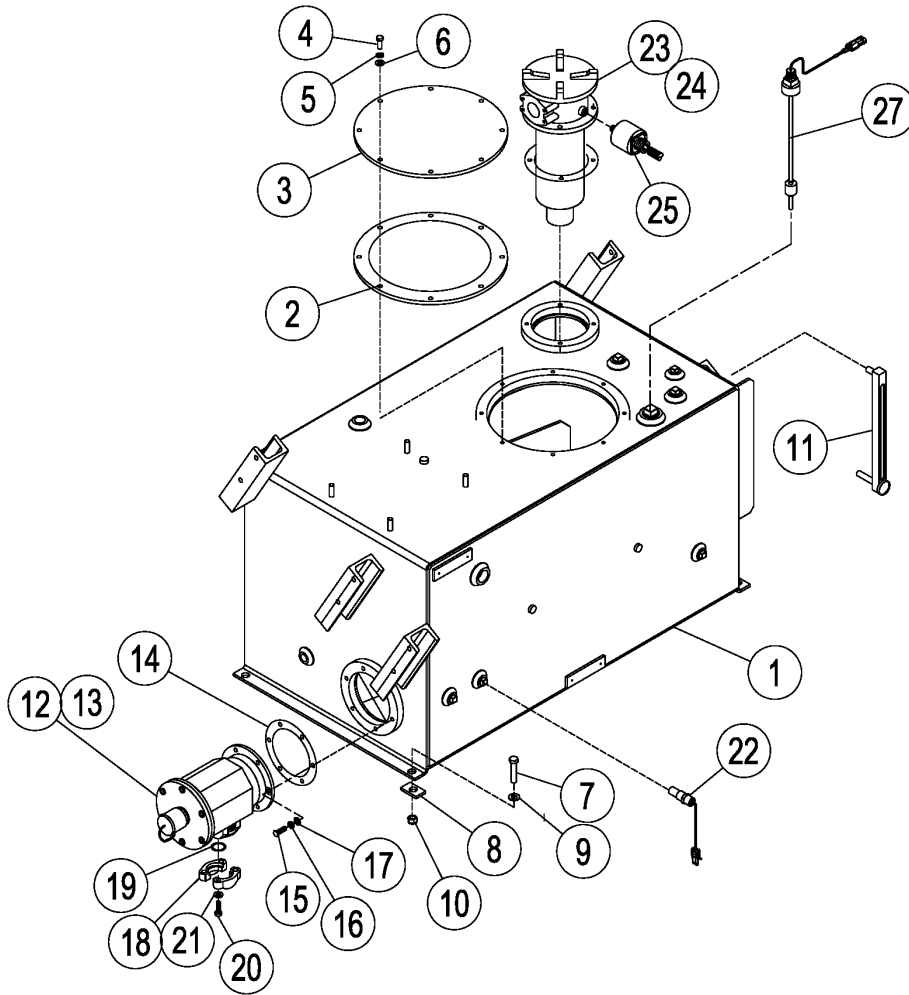
**FIGURE 7P-1B. PUMP
VICKERS PVM57
S/N 680314 and Above**



ITEM NO.	PART NO.	DESCRIPTION	UNITS PER ASSY
9	3060476	SAE Washer, 1/2	4
10	32510038	2" Split Flange (Pump Suction)	1
--	35707401	O-Ring	1
--	2783301	SH Capscrew, 1/2-13 x 1-1/2	4
--	3064476	Lockwasher, 1/2	4
--	1990790	Split Flange Elbow	1
--	1540580	Straight Elbow	1
--	1992009	Nipple	1
--	44259350	Suction Hose	1
11	32510032	1" Split Flange (Pump Outlet)	1
--	35707428	O-Ring	1
--	2783791	SH Capscrew, 3/8-16 x 1-1/4	4
--	3064470	Lockwasher, 3/8	4
12	1607041	High Pressure Ball Valve	1
13*	32653900	Flange at Suction Filter	1

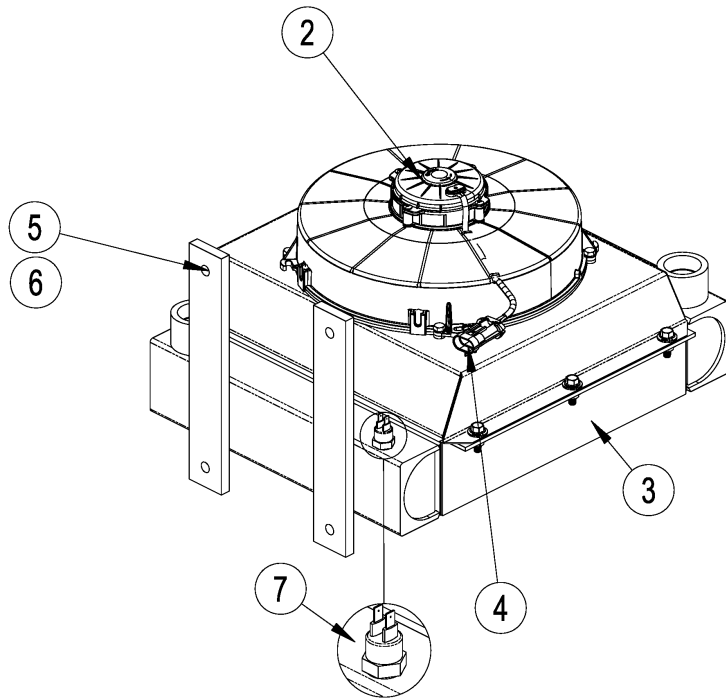
ITEM NO.	PART NO.	DESCRIPTION	UNITS PER ASSY
1		Pump Drive (Funk)	1
--	10210155	Drive Shaft	1
--	10213774	Flywheel Cover	1
--	29813157	Drive Plate	1
--	37030248	C Pad O-Ring	1
--	10213812	C Pump Pad	1
2	59427950	Main Pump (PVM 57)	1
3	37750014	Unloading Valve (12V)	1
4	25534018	Unloading Valve Coil (12V)	1
5	18649606	Block, Pump Manifold	1
6	25700102	Compensator	1
7	2775301	HH Capscrew 1/2 x 1-1/2	4
8	3064476	Lockwasher, 1/2	4

FIGURE 8-1A. HYDRAULIC TANK 98 GALLON S/N 680314 and Above



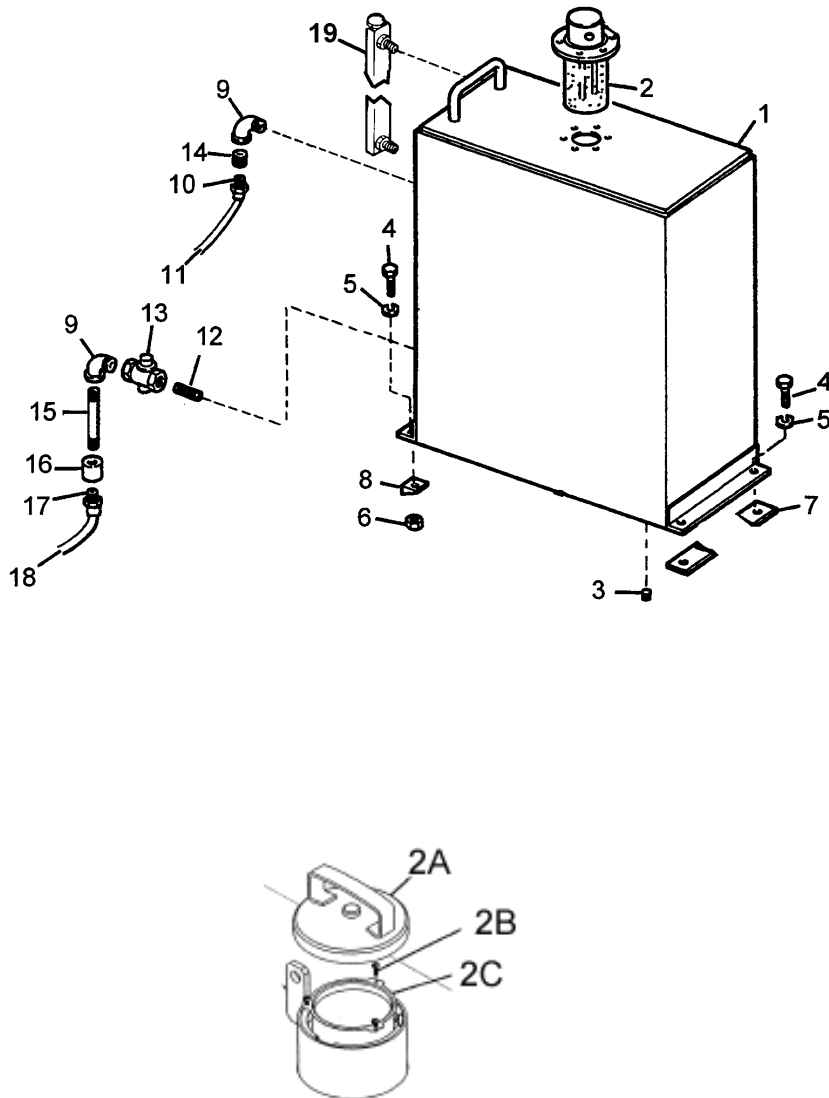
ITEM NO.	PART NO.	DESCRIPTION	UNITS PER ASSY
1	79149722	TANK, Oil	1
2	35558470	. GASKET, Cover	1
3	27471670	. COVER, Clean Out	1
4	2774781	. CAPSCREW, Hex Head 3/8-18 x 1	8
5	3064470	. LOCKWASHER, 3/8	8
6	3060470	. WASHER, SAE	8
7	2775821	CAPSCREW, Hex Head .625 x 2	4
8	46250024	PAD, Tank Isolator	4
9	3060482	WASHER, SAE .625	8
10	3042028	LOCKNUT, Hex .625-11	4
11	7030230	GAGE, Liquid Level (Oil)	1
12	3879255	STRAINER, Suction Lockable)	1
13	3894255	. ELEMENT	1
14*	35552965	. GASKET	1
--	68010011	. KIT, Lock Device O-Ring	1
--	68010013	. KIT, Seal	1
--	19123050	. KIT, Bolt	1
--	22231031	. COVER, Suction Strainer	1
15	2775041	CAPSCREW, Hex Head 7/16 x 1-1/4	6
16	3064473	LOCKWASHER, 7/16	6
17	3060476	WASHER, SAE 1/2	6
18	32653900	FLANGE, 2-1/2" 3000# THD	1
19	35708427	. O-RING	1
20	2783331	. CAPSCREW, SH 1/2-13 x 2-1/2	4
21	3064476	. LOCKWASHER, 1/2	4
22	5193967	UNIT, Temperature Sending	1
23	3880323	FILTER, Return	1
24	3894289	. ELEMENT (7 micron)	1
25	5193975	. SENDING UNIT	1
26	ALFT503	. KIT, Gasket	1
27	500766	FLOAT MONITOR, Temp/Level Alarm (Opt.)	1

**FIGURE 9-1B. OIL COOLER
w/Spal Fan (Black Blades)**



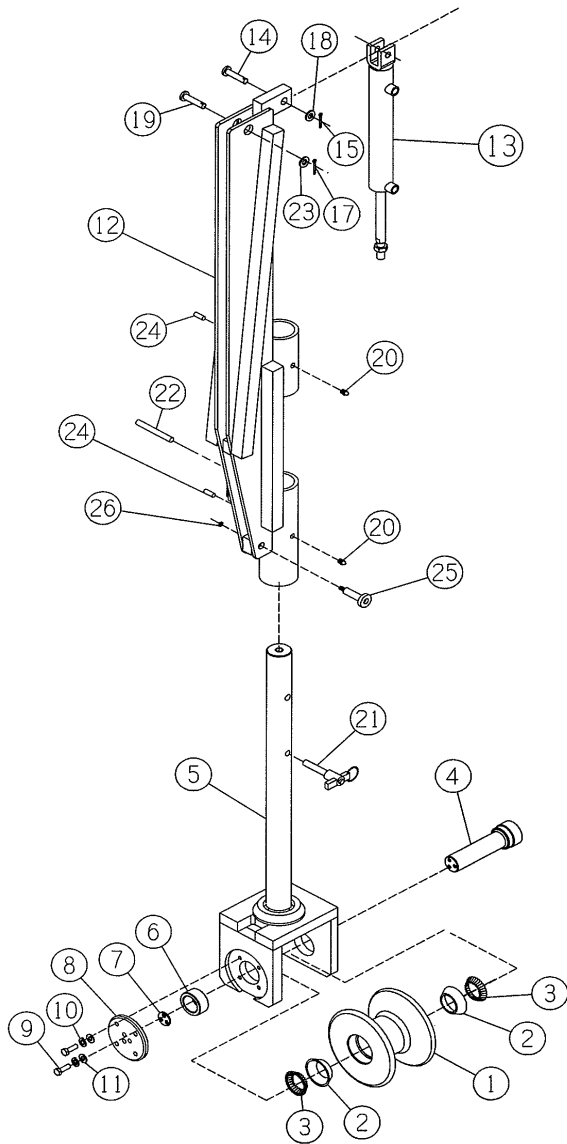
ITEM NO.	PART NO.	DESCRIPTION	UNITS PER ASSY
1	26740211	Oil Cooler (Complete).....	1
2	50211534	Motor and Fan	1
3	60570038	Cooler Core	1
4	42350120	Harness	1
5	3064473	Lockwasher, 7/16	4
6	3001026	Hex Nut, 7/16.....	4
7	5194800	Temperature Switch	1

FIGURE 10-1. FUEL TANK 40 GALLON S/N 680287 and Above



ITEM NO.	PART NO.	DESCRIPTION	UNITS PER ASSY
1	79148681	. TANK, Fuel.....	1
2A	22840030	. . CAP, Filler	1
2B	3101326	. . SCREW, Sheetmetal	3
2C	6090178	. . STRAINER	1
3	1558442	. . PLUG, Pipe 3/8	1
4	2775321	. CAPSCREW, Hex Head 1/2-13 x 2.....	4
5	3064476	. LOCKWASHER, 1/2	4
6	3001031	. NUT, Hex 1/2-13	4
7	46250024	. ISOLATOR, Tank Mounting.....	4
8	3062696	. WASHER, Bevel 1/2	4
9	1540574	. ELBOW, Street	2
10	1992170	. COUPLING, Hose.....	1
11		. HOSE, Fuel Return 1/4 x 120	1
12	1550032	. NIPPLE	1
13	1785052	. COCK, Shut-Off	1
14	1508024	. BUSHING, Reducer	1
15	1551352	. NIPPLE	1
16	1520062	. COUPLING	1
17	1992206	. COUPLING, Hose.....	2
18		. HOSE, Fuel Supply 3/8 x 120.....	1
19	7030882	. GAUGE, Liquid Level.....	1

FIGURE 12-1A. GUIDE WHEELS Heavy Duty – Non-Insulated



ITEM NO.	PART NO.	DESCRIPTION	UNITS PER ASSEMBLY
1	66219358	. ROLLER, Carriage Guide.....	1
2	16393220	. CUP, Bearing Tapered Roller.....	2
3	16372515	. CONE, Bearing Tapered Roller w/Seal	2
4	68737915	. SHAFT, Stepped Guide Wheel	1
5	68730840	. SHAFT, Guide Wheel Mounting.....	1
6	63898200	. SPACER, Guide Roller.....	1
7	70497215	. SHIM, Laminated.....	1
8	57104650	. PLATE, Retainer Guide Roller.....	1
9	2774541	. CAPSCREW, Hex Head 5/16 x 1-1/4	7
10	3064467	. LOCKWASHER, 5/16.....	7
11	3060467	. WASHER, SAE 5/16	7
12	78570002	. SUPPORT, Mounting Shaft (RH)	1
13	28550112	. CYLINDER, Roller Up/Down	1
14	3301393	. PIN, Clevis 1/2 x 2-1/4.....	1
15	3070315	. PIN, Cotter 1/8 x 1.....	1
17	3070317	. PIN, Cotter 1/8 x 1-1/4.....	1
18	3060476	. WASHER, SAE 1/2	2
19	3301657	. PIN, Clevis 3/4 x 2.....	1
20	3801052	. FITTING, Grease.....	3
21	53645050	. PIN, Guide Roller Lock.....	1
22	3385188	. PIN, Spring 1/2 x 3	1
23	3060488	. WASHER, SAE 3/4	1
24	1559440	. PLUG, 1/8 NPT Pipe	2
25	2664 111	. SCREW, Shoulder .5 x 3.5".....	1
26	3042 020	. NUT, Lock 3/8 - 16	1

FIGURE 13-1. CLAMP ARM
S/N 680287 and Above

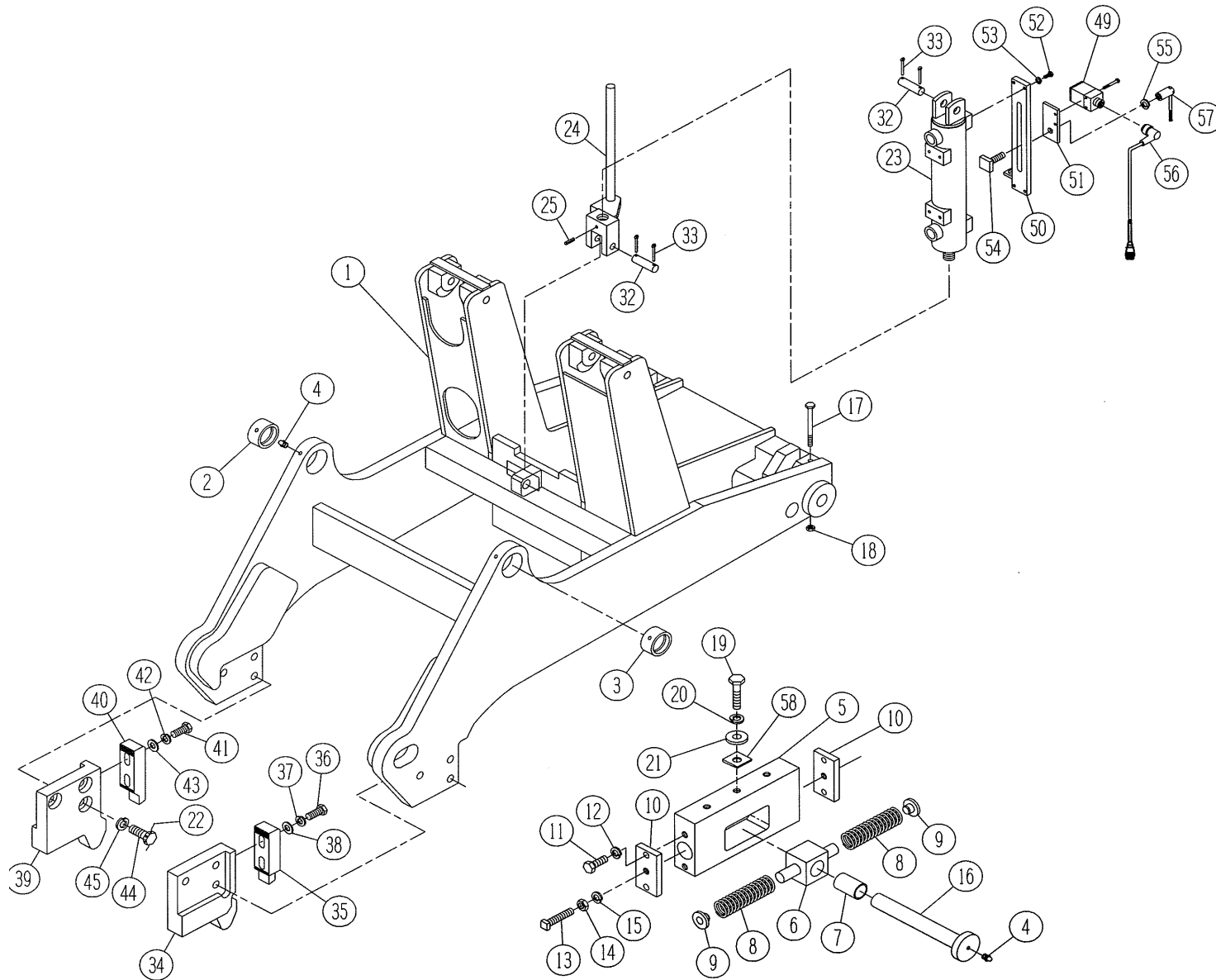


FIGURE 13-1. CLAMP ARM S/N 680287 and Above

ITEM NO.	PART NO.	DESCRIPTION	UNITS PER ASSY	ITEM NO.	PART NO.	DESCRIPTION	UNITS PER ASSY
1	14690055	. ARM, Clamp	1	--	96680078	. STOP, Clamp Arm L.H.....	1
2	22047800	. . BUSHING	1	39	18780195	. . BODY, Stop.....	1
3	22047805	. . BUSHING	1	40	18780193	. . PAD, Stop	1
4	3801052	. FITTING, Grease.....	4	41	2775801	. . CAPSCREW, HH 5/8-11 x 1-1/2.....	2
5	20986400	. HOUSING, Clamp Pivot	2	42	3064482	. . LOCKWASHER, 5/8	2
6	88673085	. BLOCK	2	43	3060812	. . WASHER, SAE 5/8	2
7	22114480	. . BUSHING	1	44	2776071	. CAPSCREW, HH 3/4-10 x 2	6
8	3609593	. SPRING	4	45	3065928	. LOCKWASHER, 3/4	6
9	61558800	. KEEPER, spring	4	46	18650323	. SPACER, Clamp Arm	2
10	13274502	. RETAINER, Housing	4	47*	20985003	. BRACKET, Clamp Arm Lock Up.....	1
11	2775326	. CAPSCREW, HH 1/2-13 x 2-1/2	8	48*	53645990	. PIN, Clamp Arm Lock	1
12	3064476	. LOCKWASHER, 1/2	8	49	5127415	. SWITCH, Proximity	2
13	2947838	. SETSCREW, Square Head 5/8-11 x 4.....	4	50	56900010	. PLATE, Prox Switch Mounting	1
14	3004041	. NUT, Hex Jam 5/8-11	4	51	56900009	. MOUNTING, Prox Switch.....	1
15	3066482	. LOCKWASHER, 5/8.....	4	52	2774271	. CAPSCREW, HH 1/4 x 3/4	8
16	54047220	. PIN, Housing	2	53	3064464	. LOCKWASHER, 1/4	8
17	2774871	. CAPSCREW, HH 3/8-16 x 4-1/2	2	54	51420003	. NUT, Switch Clamp (w/Handle)	1
18	3042020	. LOCKNUT, Hex 3/8-16.....	2	55	3060037	. WASHER, 1/2	1
19	2775836	. CAPSCREW, HH 5/8-11 x 2-3/4	6	56B	22311212-132	. CABLE, Prox	1
20	3060482	. WASHER, SAE 5/8	6	57	76662980	. NUT, Switch Clamp.....	1
21	3065922	. LOCKWASHER, 5/8.....	6	58	3062 702	. WASHER, Bevel 5/8"	1
22	87164001	. WIRE, Lock	4				
23	28552407	. CYLINDER, Lift	1				
24	66056860	. CLEVIS, Rod (with Target Bar)	1				
25	3384495	. PIN, Spring 3/16 x 1-1/2	1				
32	3338290	. PIN, 3/4 x 3-1/2.....	2				
33	3070315	. PIN, Cotter 1/8 x 1	4				
--	96680077	. STOP, Clamp Arm R.H.	1				
34	18780194	. . BODY, Stop	1				
35	18780192	. . PAD, Stop	1				
36	2775801	. . CAPSCREW, HH 5/8-11 x 1-1/2	2				
37	3064482	. . LOCKWASHER, 5/8.....	2				
38	3060812	. . WASHER, SAE 5/8	2				

FIGURE 13-2A. JAW ARM
S/N 680287 and Above and RB-UGs

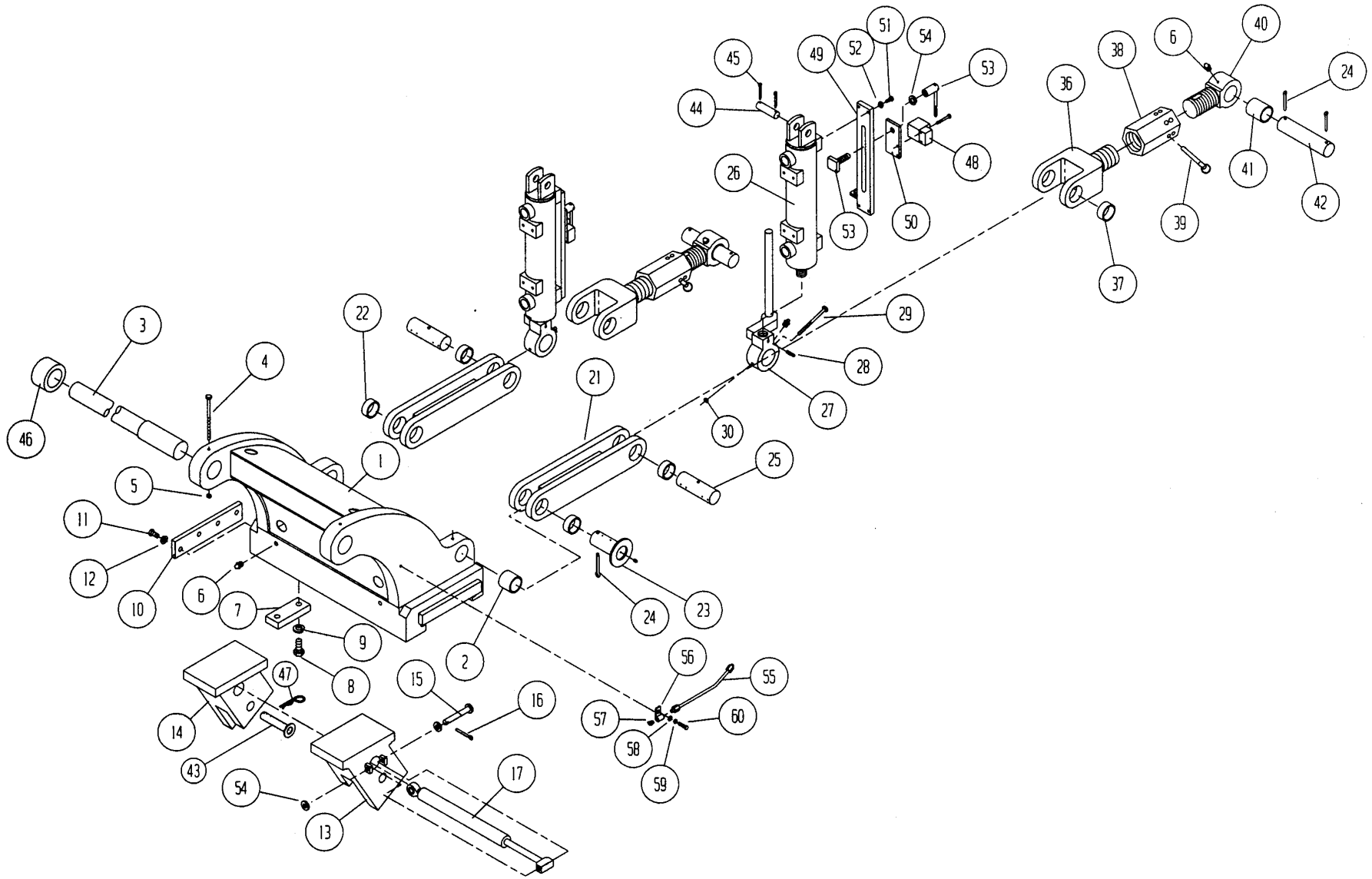
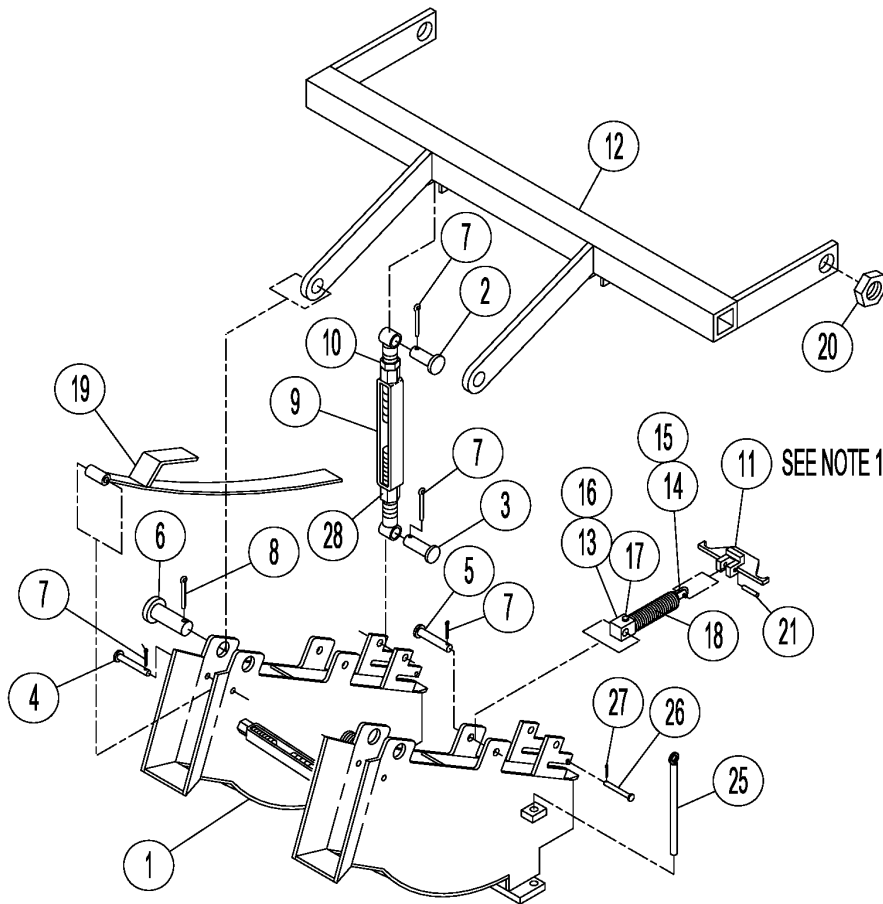


FIGURE 13-2A. JAW ARM S/N 680287 and Above and RB-UGs

ITEM NO.	PART NO.	DESCRIPTION	UNITS PER ASSY	ITEM NO.	PART NO.	DESCRIPTION	UNITS PER ASSY
1	11261702	. ARM, Jaw	1	37	22119607	. BUSHING	2
2	22119605	. BUSHING	2	38	82900012	. TOGGLE, Turnbuckle	2
3	68730810	. SHAFT, Jaw Arm.....	1	--	87361200	. WRENCH, Toggle (2-3/4").....	1
4	2774381	. CAPSCREW, Hex Head 1/4-20 x 5.....	1	39	53644500	. PIN, Detent	1
5	3042013	. LOCKNUT, Hex 1/4-20.....	1	40	66068865	. EYE, Turnbuckle	2
6	3801052	. FITTING, Grease.....	8	41	22119605	. BUSHING	1
7	18780135	. STOP, Sliding Jaw.....	2	42	54267161	. PIN, Clamp Arm	2
8	2775281	. CAPSCREW, Hex Head 1/2-13 x 1.....	4	43	54047190	. PIN, Anchor Holder	2
9	3064806	. LOCKWASHER, Hi-Collar 1/2.....	4	44	54263922	. PIN, Cylinder	2
10	55706201	. BAR, Clamp.....	1	45	3070315	. PIN, Cotter 1/8 x 1.....	4
11	2774771	. CAPSCREW, Hex Head 3/8-16 x 3/4.....	4	46	63895890	. SPACER, Jaw Arm	2
12	3064470	. LOCKWASHER, 3/8.....	5	47	3074220	. HAIRPIN, Cotter.....	2
13	46690015	. JAW, Sliding R.H.....	1	48	5127415	. SWITCH, Proximity.....	2
14	46690016	. JAW, Sliding L.H.....	1	49	56900011	. PLATE, Prox Switch Mounting.....	1
15	3301419	. PIN, Clevis 1/2 x 4.....	2	50	56900009	. MOUNTING, Prox Switch.....	1
16	3070315	. PIN, Cotter 1/8 x 1.....	1	51	2774271	. CAPSCREW, Hex Head 1/4 x 3/4.....	4
17	28550026	. CYLINDER, Jaw Box.....	1	52	3064464	. LOCKWASHER, 1/4.....	4
--	65630302	. . ROD, Piston.....	1	53	51420003	. NUT, Switch Clamp (w/Handle).....	1
--	68010003	. . SEAL KIT	1	54	3060037	. WASHER, 1/2.....	1
18	2774282	. CAPSCREW, Hex Head 1/4-20 x 1.....	4	55	82586502	. TUBE, Remote Greasing	2
19	87124001	. WIRE, Lock	1	56	21000172	. BRACKET, Remote Grease Tube	2
20	3063907	. CLIP, Lock 1/4.....	4	57	3801052	. FITTING, Grease	2
--	96680041	. FIXED LINK ASSEMBLY.....	2	58	3060464	. WASHER, 1/4.....	2
21	47808810	. . LINK, Fixed.....	1	59	3064464	. LOCKWASHERm 1/4.....	2
22	22119607	. . BUSHING, Link.....	4	60	2774261	. CAPSCREW, Hex Head 1/4 x 1/2.....	2
23	54047230	. SHAFT, Fixed Link	2				
24	3070625	. PIN, Cotter 3/16 x 1-3/4.....	6				
25	54266910	. SHAFT, Toggle Center.....	2				
26	28552407	. CYLINDER, Clamp Arm	2				
--	54912875	. . PISTON	1				
27	66068240	. EYE, Rod (with Prox Switch Target Bar).....	2				
28	3384191	. PIN, Spring 3/16 x 1-1/4.....	2				
29	2774601	. CAPSCREW, Hex Head 5/16-18 x 3-1/2.....	2				
30	3042016	. LOCKNUT, 5/16-18.....	2				
36	66058846	. TURNBUCKLE, Jaw.....	2				

FIGURE 13-3A. ANCHOR FEEDER CHUTE Two Turnbuckle Chute S/N 680287 and Above



NOTE 1: TAB ON ITEM 11 SHOULD FACE UP WHEN INSTALLED.

ITEM NO.	PART NO.	DESCRIPTION	UNITS PER ASSY
---	96685561	ANCHOR CHUTE ASSEMBLY	NP
1	2435 0008	. CHUTE, Anchor	1
--	82900017	. . Turnbuckle	2
--	3004051	. . NUT, Hex Jam 3/4-10	2
2	3301247	. PIN, Clevis 3/8 x 1-7/8	2
3	3301253	. PIN, Clevis 3/8 x 2-1/8	2
4	3301261	. PIN, Clevis 3/8 x 2-5/8	2
5	3301399	. PIN, Clevis 1/2 x 2-5/8	2
6	3301863	. PIN, Clevis 1 x 2-3/4	2
7	3070313	. PIN, Cotter 1/8 x 7/8	8
8	3070623	. PIN, Clevis 3/16 x 1-1/2	2
9	82900016	. TURNBUCKLE, Chute	2
10	3027051	. . NUT, Hex Jam 3/4-10	2
11	22492650	. CAM, Chute Door	2
12	77420049	. MOUNTING, Chute	1
---	96350523	. CYLINDER, Door	2
13	28560500	. . BODY, Cylinder	1
14	54910210	. . PISTON	1
15	35701124	. . . O-Ring	1
16	63580300	. . WIPER	1
17	1980741	. . ADAPTER	1
18	3663600	. . SPRING	1
19	13710321	. DAMPER	2
20	3042043	. NUT, Hex Lock 1-1/4-7	2
21	3393723	. PIN, Spring 1/4 x 1-1/4	2
25	54236950	. PIN, Chute Door	4
26	3001140	. PIN, Clevis 1/4 x 2	2
27	3070003	. PIN, Cotter 1/16 x 1/2	2
28	3028205	. NUT, Hex Jam LH Thread	2

FIGURE 14-1. ANCHOR TOOL

Fair

S/N 680232 and Above

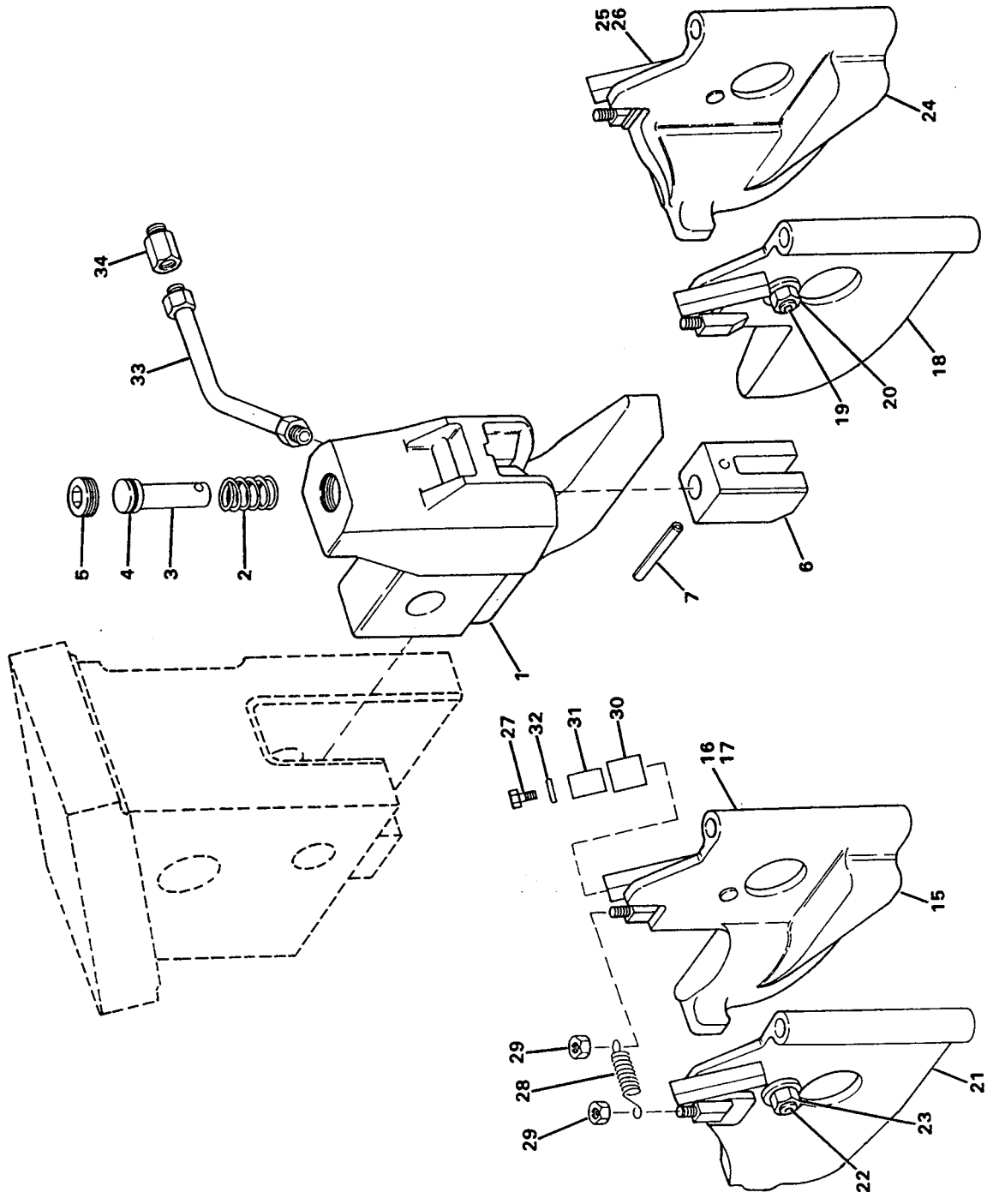




FIGURE 14-1. ANCHOR TOOL FAIR S/N 680232 and Above

ITEM NO.	PART NO.	DESCRIPTION	UNITS PER ASSY
--	9668 0019	FAIR TOOL ASSEMBLY	1
--	9668 0060	. ANCHOR HOLDER ASSEMBLY, R.H.	1
1	4391 0006	.. HOLDER, Anchor	1
2	3605 901	.. SPRING, Gripper Return.....	1
3	5841 3795	.. GRIPPER, Hydraulic	1
4	3570 2075	.. O-Ring.....	1
5	1559 924	.. PLUG, Pipe 3/4 NPT	1
6	1878 0154	.. SHOE, Clamp	1
7	3384 191	.. PIN, Spring 3/16 x 1-1/4	1
--	9668 0061	. ANCHOR HOLDER ASSEMBLY, L.H.	1
8	4391 0005	.. HOLDER, Anchor	1
9	3605 901	.. SPRING, Gripper Return.....	1
10	5841 3795	.. GRIPPER, Hydraulic	1
11	3570 2075	.. O-Ring.....	1
12	1559 924	.. PLUG, Pipe 3/4 NPT	1
13	1878 0154	.. SHOE, Clamp	1
14	3384 191	.. PIN, Spring 3/16 x 1-1/4	1
15	2724 4358	. DOOR, L.H. Inner	1
16	2925 154	.. SETSCREW, Soc. Head 1/2-13 x 1-1/4	1
17	3004 031	.. NUT, Hex Jam 1/2-13	1
--*	5885 0042	.. ROLLER, Support	1
--*	5885 0041	.. SPRING, Anchor	1
18	2724 4356	. DOOR, R.H. Inner	1
19	2925 154	.. SETSCREW, Soc. Head 1/2-13 x 1-1/4	1
20	3004 031	.. NUT, Hex Jam 1/2-13	1
--*	5885 0042	.. ROLLER, Support	1
--*	5885 0041	.. SPRING, Anchor	1
21	2724 4359	. DOOR, L.H. Outer.....	1
22	2925 154	.. SETSCREW, Soc. Head 1/2-13 x 1-1/4	1
23	3004 031	.. NUT, Hex Jam 1/2-13	1
--*	5885 0042	.. ROLLER, Support	1
--*	5885 0041	.. SPRING, Anchor	1
24	2724 4357	. DOOR, R.H. Outer	1
25	2925 154	.. SETSCREW, Soc. Head 1/2-13 x 1-1/4	1
26	3004 031	.. NUT, Hex Jam 1/2-13	1
--*	5885 0042	.. ROLLER, Support	1
--*	5885 0041	.. SPRING, Anchor	1
27	2774 821	. CAPSCREW, Hex Head 3/8-16 x 2.....	4
28	3662 174	. SPRING, Extension	2
29	3042 219	. LOCKNUT, Hex 1/4-20.....	4
--	9668 0070	. ROLLER AND BUSHING ASSEMBLY.....	4
30	7299 2555	.. ROLLER, Cam	1
31	2207 9294	.. BUSHING, Roller.....	1
32	3060 464	. WASHER, SAE 1/4.....	8
33	4425 1536	. HOSE, 1/4 x 27.....	2
34	1028 6150	. DISCONNECT, Male.....	2
35*	4847 0012	. LINER, Chute	2

FIGURE 14-2. ANCHOR TOOL

Super Fair

S/N 680232 and Above

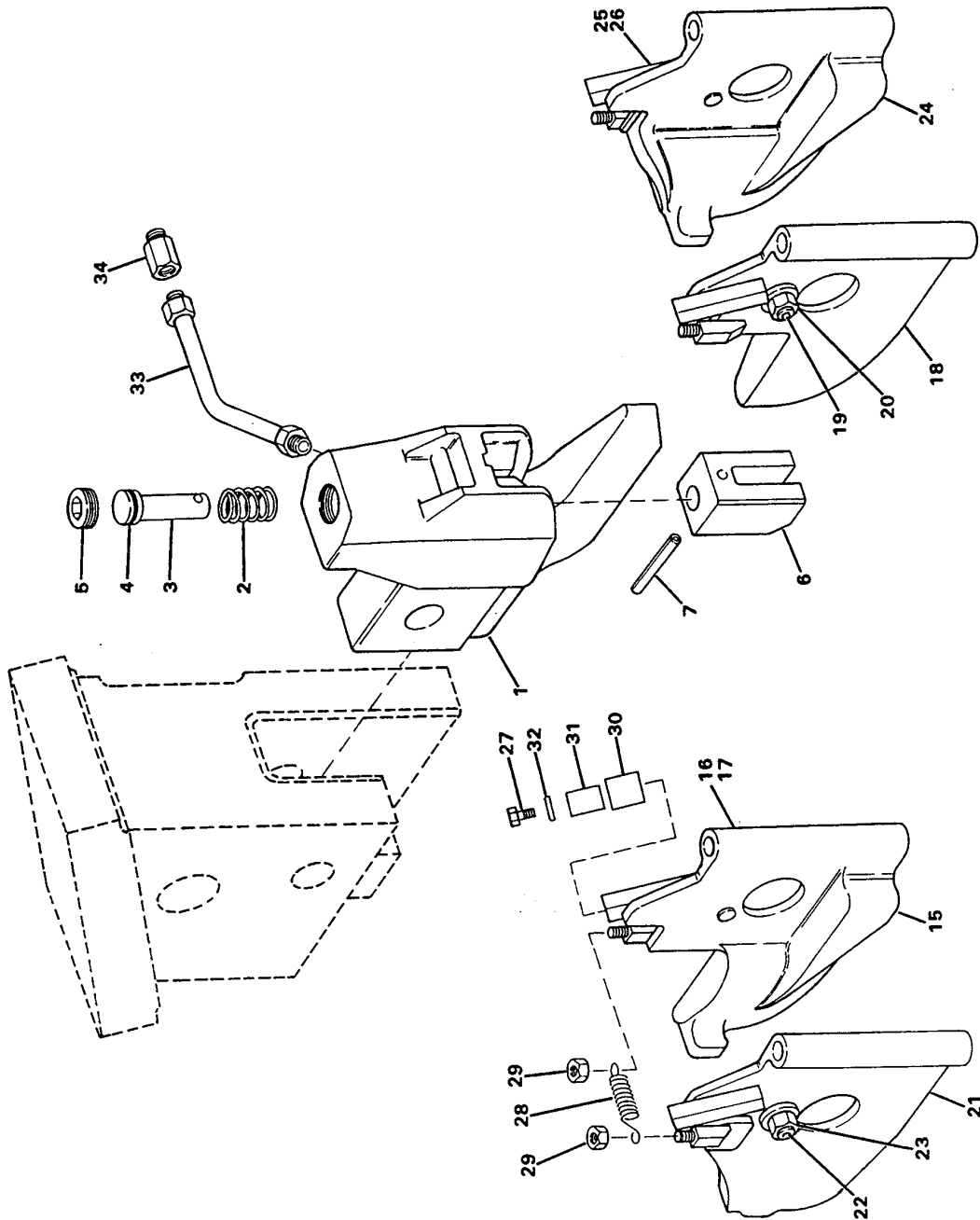




FIGURE 14-2. ANCHOR TOOL SUPER FAIR S/N 680232 and Above

ITEM NO.	PART NO.	DESCRIPTION	UNITS PER ASSY
--	9668 0225	FAIR TOOL ASSEMBLY	1
--	9668 0224	. ANCHOR HOLDER ASSEMBLY, R.H.	1
1	4391 0029	.. HOLDER, Anchor	1
2	3605 901	.. SPRING, Gripper Return.....	1
3	5841 3795	.. GRIPPER, Hydraulic	1
4	3570 2075	.. O-Ring.....	1
5	1559 924	.. PLUG, Pipe 3/4 NPT	1
6	1878 0153	.. SHOE, Clamp	1
7	3384 191	.. PIN, Spring 3/16 x 1-1/4	1
--	9668 0223	. ANCHOR HOLDER ASSEMBLY, L.H.	1
8	4391 0028	.. HOLDER, Anchor	1
9	3605 901	.. SPRING, Gripper Return.....	1
10	5841 3795	.. GRIPPER, Hydraulic	1
11	3570 2075	.. O-Ring.....	1
12	1559 924	.. PLUG, Pipe 3/4 NPT	1
13	1878 0153	.. SHOE, Clamp	1
14	3384 191	.. PIN, Spring 3/16 x 1-1/4	1
15	2724 4358	. DOOR, L.H. Inner	1
16	2925 154	.. SETSCREW, Soc. Head 1/2-13 x 1-1/4	1
17	3004 031	.. NUT, Hex Jam 1/2-13	1
--*	5885 0042	.. ROLLER, Support	1
--*	5885 0041	.. SPRING, Anchor	1
18	2724 4356	. DOOR, R.H. Inner	1
19	2925 154	.. SETSCREW, Soc. Head 1/2-13 x 1-1/4	1
20	3004 031	.. NUT, Hex Jam 1/2-13	1
--*	5885 0042	.. ROLLER, Support	1
--*	5885 0041	.. SPRING, Anchor	1
21	2724 4359	. DOOR, L.H. Outer.....	1
22	2925 154	.. SETSCREW, Soc. Head 1/2-13 x 1-1/4	1
23	3004 031	.. NUT, Hex Jam 1/2-13	1
--*	5885 0042	.. ROLLER, Support	1
--*	5885 0041	.. SPRING, Anchor	1
24	2724 4357	. DOOR, R.H. Outer	1
25	2925 154	.. SETSCREW, Soc. Head 1/2-13 x 1-1/4	1
26	3004 031	.. NUT, Hex Jam 1/2-13	1
--*	5885 0042	.. ROLLER, Support	1
--*	5885 0041	.. SPRING, Anchor	1
27	2774 821	. CAPSCREW, Hex Head 3/8-16 x 2.....	4
28	3662 174	. SPRING, Extension	2
29	3042 219	. LOCKNUT, Hex 1/4-20.....	4
--	9668 0070	. ROLLER AND BUSHING ASSEMBLY.....	4
30	7299 2555	.. ROLLER, Cam	1
31	2207 9294	.. BUSHING, Roller.....	1
32	3060 464	. WASHER, SAE 1/4.....	8
33	4425 1536	. HOSE, 1/4 x 27.....	2
34	1028 6150	. DISCONNECT, Male.....	2
35*	4847 0012	. LINER, Chute	2

FIGURE 14-3. ANCHOR TOOL

Unit 4

S/N 680232 and Above

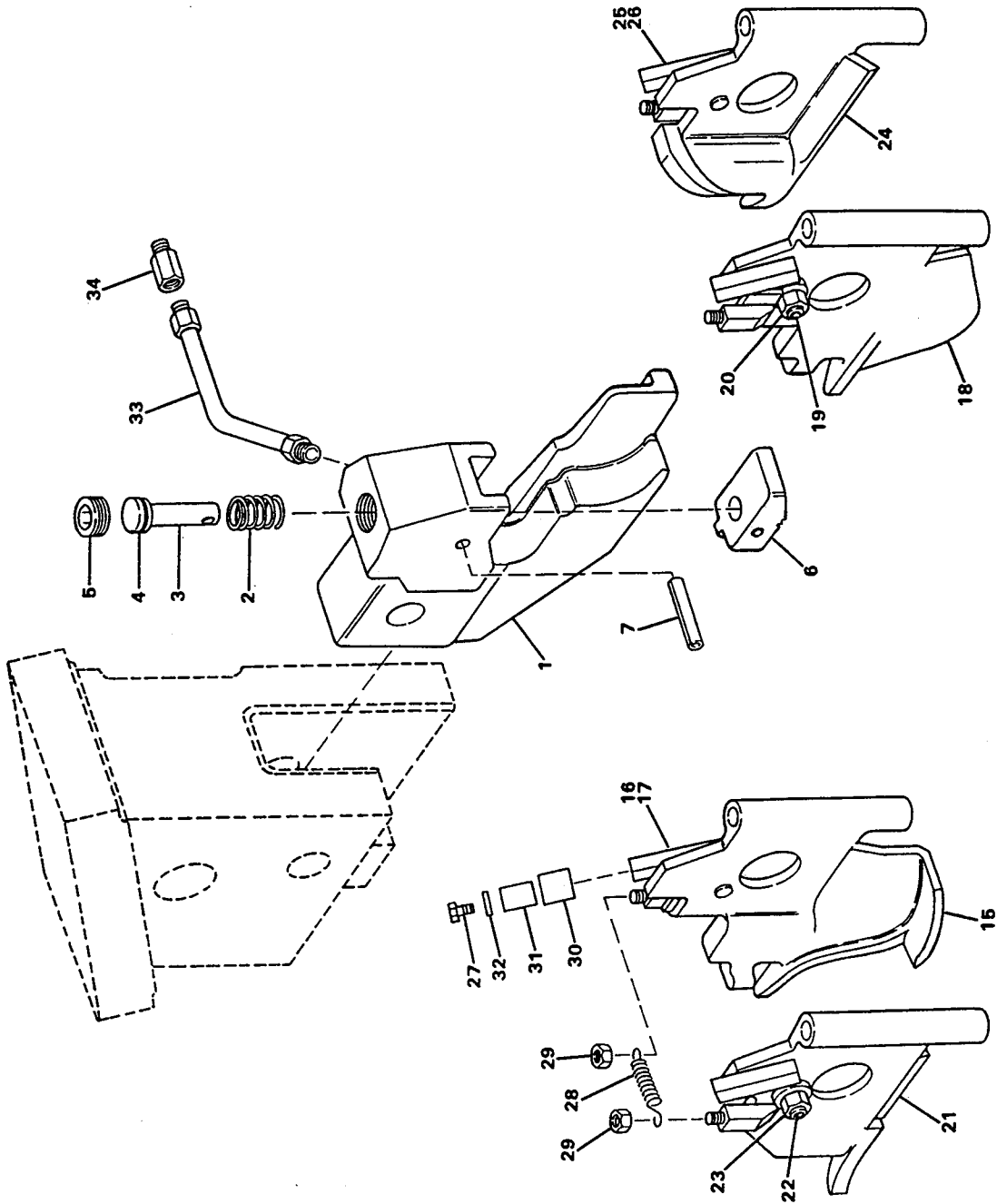




FIGURE 14-3. ANCHOR TOOL UNIT 4 S/N 680232 and Above

ITEM NO.	PART NO.	DESCRIPTION	UNITS PER ASSY
--	9668 0180	UNIT 4 TOOL ASSEMBLY	1
--	9668 0181	. ANCHOR HOLDER ASSEMBLY, R.H.	1
1	4391 0024	.. HOLDER, Anchor	1
2	3605 901	.. SPRING, Gripper Return.....	1
3	5841 3795	.. GRIPPER	1
4	3570 2078	.. O-Ring.....	1
5	1559 924	.. PLUG, Pipe 3/4 NPT	1
6	1878 0301	.. BLOCK, Gripper	1
7	3384 191	.. PIN, Spring 3/16 x 1-1/4	1
--	9668 0182	. ANCHOR HOLDER ASSEMBLY, R.H.	1
8	4391 0025	.. HOLDER, Anchor	1
9	3605 901	.. SPRING, Gripper Return.....	1
10	5841 3795	.. GRIPPER	1
11	3570 2078	.. O-Ring.....	1
12	1559 924	.. PLUG, Pipe 3/4 NPT	1
13	1878 0301	.. BLOCK, Gripper	1
14	3384 191	.. PIN, Spring 3/16 x 1-1/4	1
15	2724 4360	. DOOR, L.H. Inner	1
16	2925 154	.. SETSCREW, Soc. Head 1/2-13 x 1-1/4	1
17	3004 031	.. NUT, Hex Jam 1/2-13	1
18	2724 4361	. DOOR, R.H. Inner	1
19	2925 154	.. SETSCREW, Soc. Head 1/2-13 x 1-1/4	1
20	3004 031	.. NUT, Hex Jam 1/2-13	1
21	2724 4362	. DOOR, L.H. Outer.....	1
22	2925 154	.. SETSCREW, Soc. Head 1/2-13 x 1-1/4	1
23	3004 031	.. NUT, Hex Jam 1/2-13	1
24	2724 4363	. DOOR, R.H. Outer	1
25	2925 154	.. SETSCREW, Soc. Head 1/2-13 x 1-1/4	1
26	3004 031	.. NUT, Hex Jam 1/2-13	1
27	2774 821	. CAPSCREW, Hex Head 3/8-16 x 2.....	4
28	3662 174	. SPRING, Extension	2
29	3042 219	. LOCKNUT, Hex 1/4-20.....	4
30	7299 2555	. ROLLER, Cam	4
31	2207 9294	. BUSHING, Roller.....	4
32	3060 464	. WASHER, SAE 1/4.....	8
33	4425 1536	. HOSE, 1/4 x 27.....	2
34	1028 6150	. DISCONNECT, Male.....	2

FIGURE 14-4. ANCHOR TOOL

Channeloc II

S/N 680232 and Above

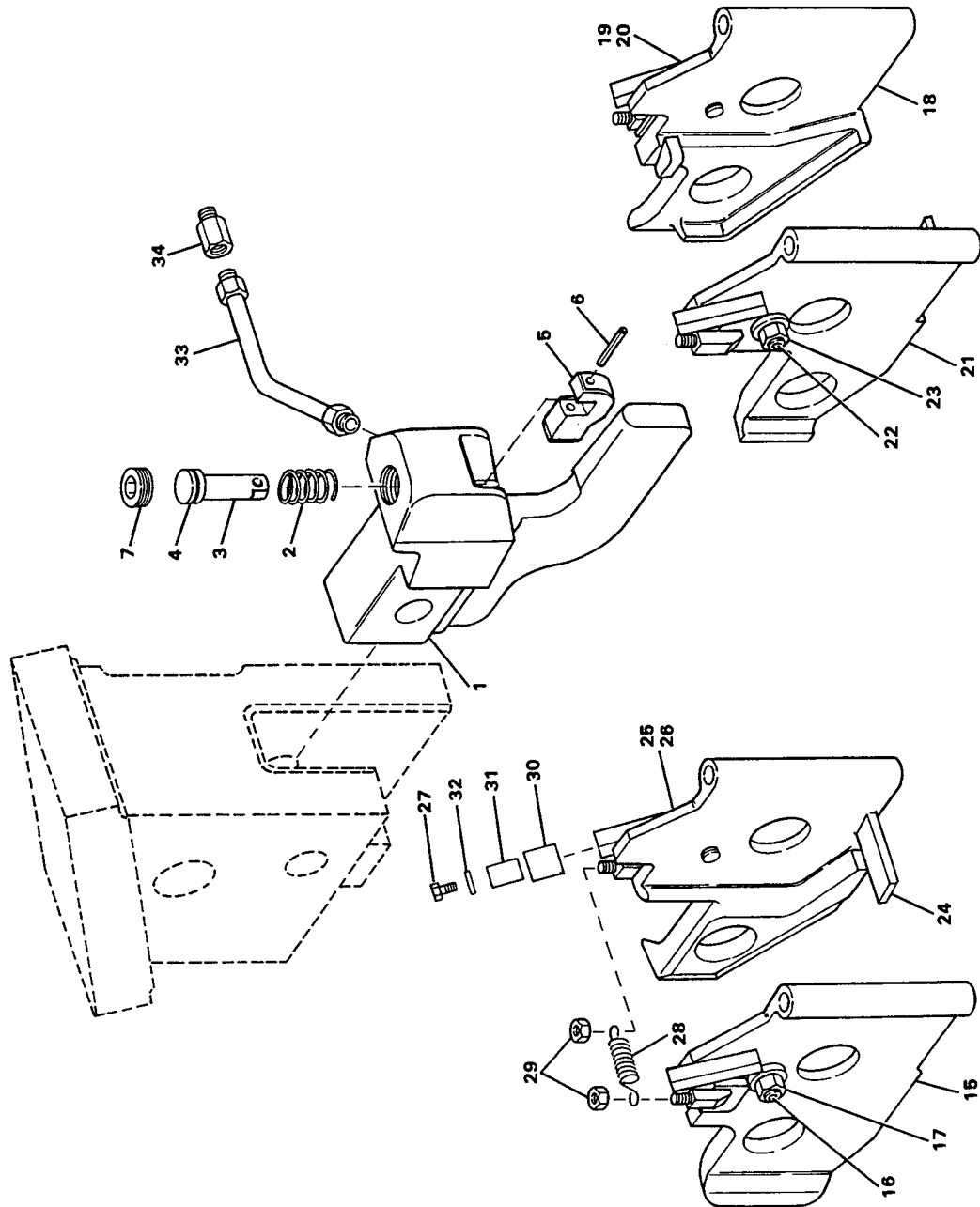




FIGURE 14-4. ANCHOR TOOL CHANNELOC II S/N 680232 and Above

ITEM NO.	PART NO.	DESCRIPTION	UNITS PER ASSY
--	9668 0165	CHANNELOC II TOOL ASSEMBLY.....	1
--	9668 0163	. ANCHOR HOLDER ASSEMBLY, R.H.....	1
1	4391 0022	.. HOLDER, Anchor	1
2	3607 470	.. SPRING, Gripper Return.....	1
3	5841 5751	.. GRIPPER	1
4	3570 2923	.. O-Ring.....	1
5	1878 0297	.. BLOCK, Gripper	1
6	3384 191	.. PIN, Spring 3/16 x 1-1/4	1
7	1559 925	.. PLUG, Pipe 1" NPT.....	1
--	9668 0164	. ANCHOR HOLDER ASSEMBLY, L.H.	1
8	4391 0023	.. HOLDER, Anchor	1
9	3607 470	.. SPRING, Gripper Return.....	1
10	5841 5751	.. GRIPPER	1
11	3570 2923	.. O-Ring.....	1
12	1878 0297	.. BLOCK, Gripper	1
13	3384 191	.. PIN, Spring 3/16 x 1-1/4	1
14	1559 925	.. PLUG, Pipe 1" NPT.....	1
15	2724 7303	. DOOR, L.H. Outer.....	1
16	2925 154	.. SETSCREW, Soc. Head 1/2-13 x 1-1/4	1
17	3004 031	.. NUT, Hex Jam 1/2-13	1
18	2724 7302	. DOOR, R.H. Outer	1
19	2925 154	.. SETSCREW, Soc. Head 1/2-13 x 1-1/4	1
20	3004 031	.. NUT, Hex Jam 1/2-13	1
21	2724 7304	. DOOR, R.H. Inner	1
22	2925 154	.. SETSCREW, Soc. Head 1/2-13 x 1-1/4	1
23	3004 031	.. NUT, Hex Jam 1/2-13	1
24	2724 7305	. DOOR, L.H. Inner	1
25	2925 154	.. SETSCREW, Soc. Head 1/2-13 x 1-1/4	1
26	3004 031	.. NUT, Hex Jam 1/2-13	1
27	2774 821	. CAPSCREW, Hex Head 3/8-16 x 2.....	4
28	3662 174	. SPRING, Extension	2
29	3042 219	. LOCKNUT, Hex 1/4-20.....	4
30	7299 2555	. ROLLER, Cam	4
31	2207 9294	. BUSHING, Roller.....	4
32	3060 464	. WASHER, SAE 1/4.....	8
33	4425 1536	. HOSE, 1/4 x 27.....	2
34	1028 6150	. DISCONNECT, Male.....	2

FIGURE 14-5. ANCHOR TOOL

Woodings

S/N 680232 and Above

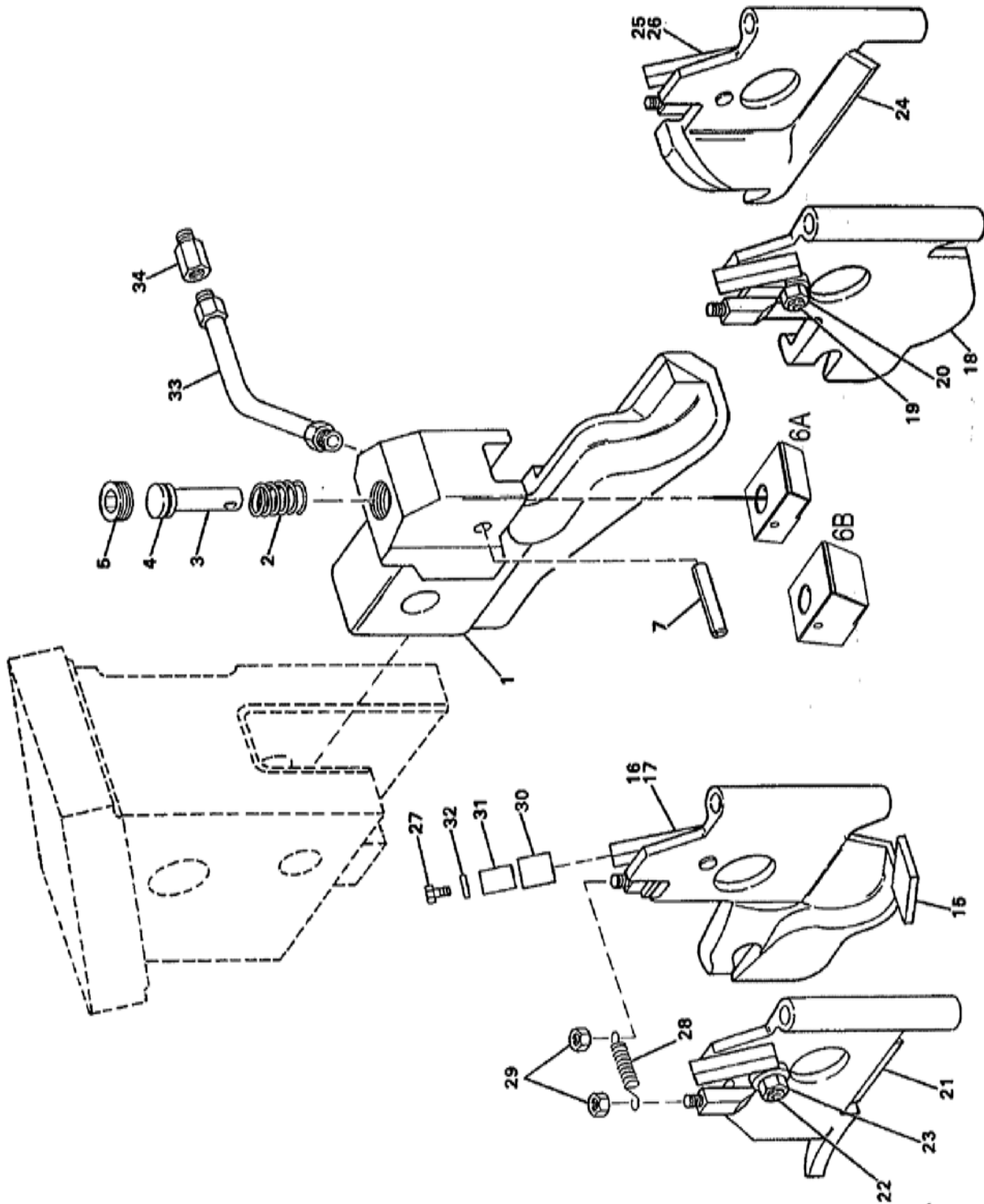




FIGURE 14-5. ANCHOR TOOL WOODINGS S/N 680232 and Above

ITEM NO.	PART NO.	DESCRIPTION	UNITS PER ASSY
--	96680017	WOODINGS TOOL ASSEMBLY	1
--	96680062	. ANCHOR HOLDER ASSEMBLY, R.H.	1
1	43910012	.. HOLDER, Anchor	1
2	3605901	.. SPRING, Gripper Return	1
3	58413795	.. GRIPPER	1
4	35702078	.. O-Ring.....	1
5	1559924	.. PLUG, Pipe 3/4 NPT.....	1
6A	18780155	.. BLOCK, Std Gripper.....	1
6B	18780160	.. BLOCK, Thick Gripper (Ferromex Machines).....	1
7	3384519	.. PIN, Spring 3/16 x 1-1/4	1
--	96680063	. ANCHOR HOLDER ASSEMBLY, L.H.	1
8	43910011	.. HOLDER, Anchor	1
9	3605901	.. SPRING, Gripper Return	1
10	58413795	.. GRIPPER	1
11	35702078	.. O-Ring.....	1
12	1559924	.. PLUG, Pipe 3/4 NPT.....	1
13	18780155	.. BLOCK, Gripper.....	1
14	3384519	.. PIN, Spring 3/16 x 1-1/4	1
15	27243357	. DOOR, L.H. Inner	1
16	2925154	.. SETSCREW, Soc. Head 1/2-13 x 1-1/4.....	1
17	3004031	.. NUT, Hex Jam 1/2-13	1
18	27243356	. DOOR, R.H. Inner.....	1
19	2925154	.. SETSCREW, Soc. Head 1/2-13 x 1-1/4.....	1
20	3004031	.. NUT, Hex Jam 1/2-13	1
21	27243355	. DOOR, L.H. Outer	1
22	2925154	.. SETSCREW, Soc. Head 1/2-13 x 1-1/4.....	1
23	3004031	.. NUT, Hex Jam 1/2-13	1
24	27243354	. DOOR, R.H. Outer	1
25	2925154	.. SETSCREW, Soc. Head 1/2-13 x 1-1/4.....	1
26	3004031	.. NUT, Hex Jam 1/2-13	1
27	2774821	. CAPSCREW, Hex Head 3/8-16 x 2.....	4
28	3662174	. SPRING, Extension.....	2
29	3042219	. LOCKNUT, Hex 1/4-20.....	4
30	72992555	. ROLLER, Cam.....	4
31	22079294	. BUSHING, Roller	4
32	3060464	. WASHER, SAE 1/4	8
33	44251536	. HOSE, 1/4 x 27	2
34	10286150	. DISCONNECT, Male	2

FIGURE 14-6. ANCHOR TOOL

Unit

S/N 680232 and Above

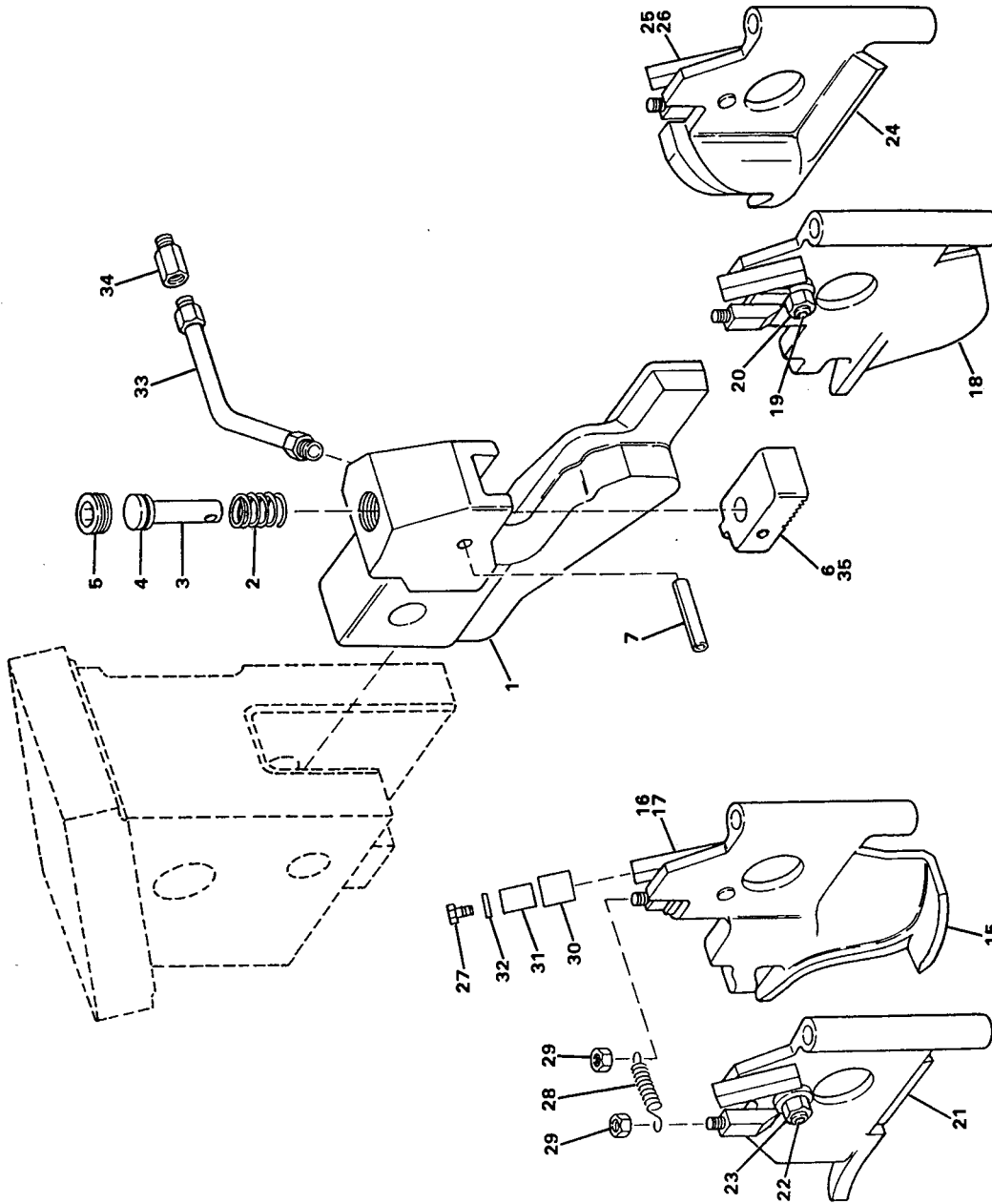




FIGURE 14-6. ANCHOR TOOL UNIT S/N 680232 and Above

ITEM NO.	PART NO.	DESCRIPTION	UNITS PER ASSY
--	9668 0016	UNIT TOOL ASSEMBLY.....	1
--	9668 0064	. ANCHOR HOLDER ASSEMBLY, R.H.	1
1	4391 0002	. . HOLDER, Anchor.....	1
2	3605 901	. . SPRING, Gripper Return	1
3	5841 3795	. . GRIPPER.....	1
4	3570 2078	. . O-Ring	1
5	1559 924	. . PLUG, Pipe 3/4 NPT.....	1
6	1878 0155	. . BLOCK, Gripper.....	1
7	3384 191	. . PIN, Spring 3/16 x 1-1/4	1
--	9668 0065	. ANCHOR HOLDER ASSEMBLY, L.H.	1
8	4391 0001	. . HOLDER, Anchor.....	1
9	3605 901	. . SPRING, Gripper Return	1
10	5841 3795	. . GRIPPER.....	1
11	3570 2078	. . O-Ring	1
12	1559 924	. . PLUG, Pipe 3/4 NPT.....	1
13	1878 0155	. . BLOCK, Gripper.....	1
14	3384 191	. . PIN, Spring 3/16 x 1-1/4	1
15	2724 3359	. DOOR, L.H. Inner.....	1
16	2925 154	. . SETSCREW, Soc. Head 1/2-13 x 1-1/4	1
17	3004 031	. . NUT, Hex Jam 1/2-13	1
18	2724 3358	. DOOR, R.H. Inner	1
19	2925 154	. . SETSCREW, Soc. Head 1/2-13 x 1-1/4	1
20	3004 031	. . NUT, Hex Jam 1/2-13	1
21	2724 3355	. DOOR, L.H. Outer.....	1
22	2925 154	. . SETSCREW, Soc. Head 1/2-13 x 1-1/4	1
23	3004 031	. . NUT, Hex Jam 1/2-13	1
24	2724 3354	. DOOR, R.H. Outer	1
25	2925 154	. . SETSCREW, Soc. Head 1/2-13 x 1-1/4	1
26	3004 031	. . NUT, Hex Jam 1/2-13	1
27	2774 301	. CAPSCREW, Hex Head 3/8-16 x 2.....	4
28	3662 174	. SPRING, Extension.....	2
29	3042 219	. LOCKNUT, Hex 1/4-20.....	4
30	7299 2555	. ROLLER, Cam.....	4
31	2207 9294	. BUSHING, Roller.....	4
32	3060 464	. WASHER, SAE 1/4	8
33	4425 1536	. HOSE, 1/4 x 27.....	2
34	1028 6150	. DISCONNECT, Male	2
35	1878 0304	. BLOCK, Gripper (Unit Lites).....	2

FIGURE 14-7. ANCHOR TOOL

Channeloc

S/N 680232 and Above

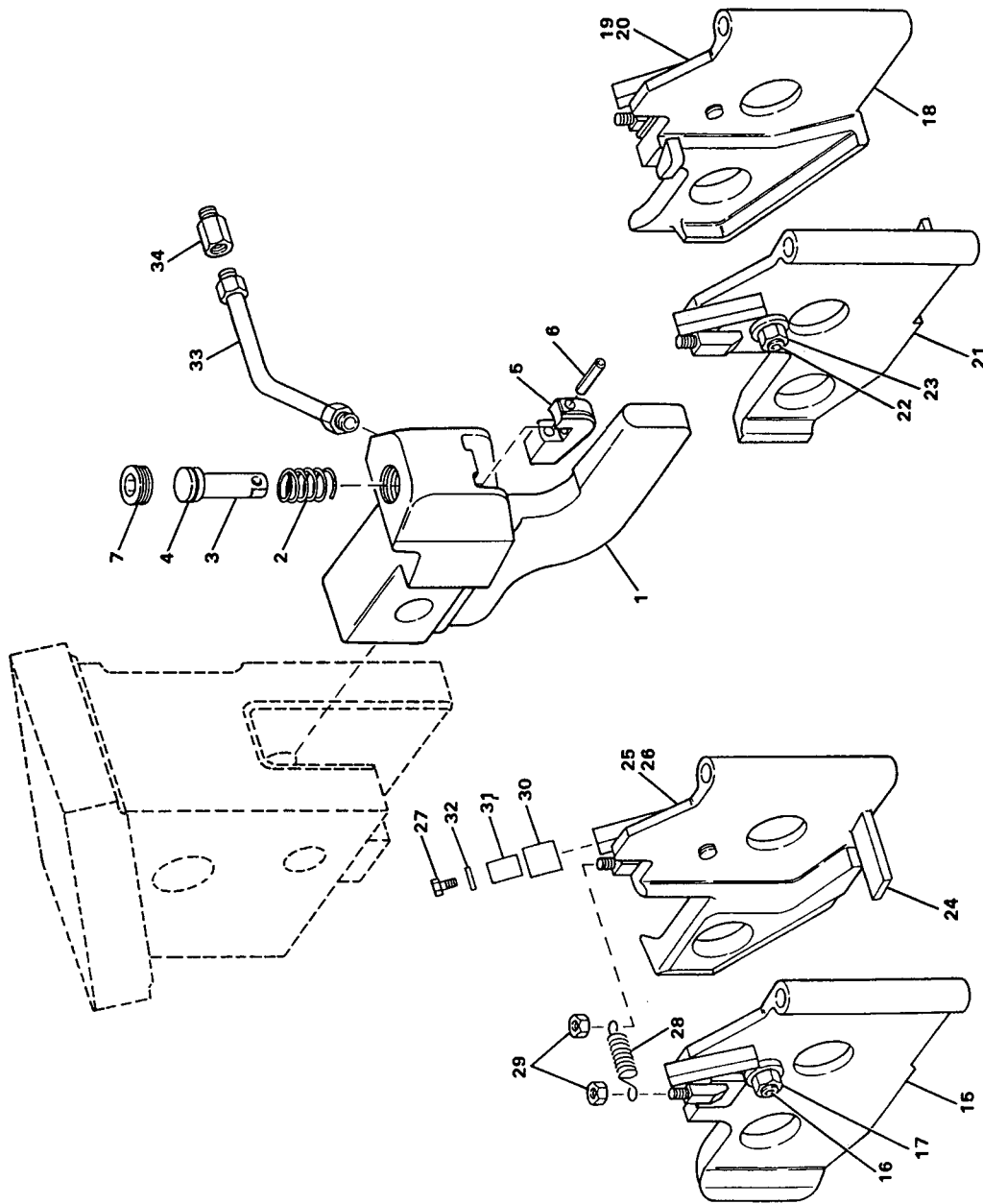




FIGURE 14-7. ANCHOR TOOL CHANNELOC S/N 680232 and Above

ITEM NO.	PART NO.	DESCRIPTION	UNITS PER ASSY
--	9668 0088	CHANNELOC TOOL ASSEMBLY	1
--	9668 0058	. ANCHOR HOLDER ASSEMBLY, R.H.	1
1	4391 0022	.. HOLDER, Anchor.....	1
2	3607 470	.. SPRING, Gripper Return	1
3	5841 5750	.. GRIPPER.....	1
4	3570 2923	.. O-Ring	1
5	1878 0208	.. BLOCK, Gripper.....	1
6	3384 191	.. PIN, Spring 3/16 x 1-1/4	1
7	1559 925	.. PLUG, Pipe 1" NPT	1
--	9668 0059	. ANCHOR HOLDER ASSEMBLY, R.H.	1
8	4391 0023	.. HOLDER, Anchor.....	1
9	3607 470	.. SPRING, Gripper Return	1
10	5841 5750	.. GRIPPER.....	1
11	3570 2923	.. O-Ring	1
12	1878 0208	.. BLOCK, Gripper.....	1
13	3384 191	.. PIN, Spring 3/16 x 1-1/4	1
14	1559 925	.. PLUG, Pipe 1" NPT	1
15	2724 7303	. DOOR, L.H. Outer.....	1
16	2925 154	.. SETSCREW, Soc. Head 1/2-13 x 1-1/4	1
17	3004 031	.. NUT, Hex Jam 1/2-13	1
18	2724 7302	. DOOR, R.H. Outer	1
19	2925 154	.. SETSCREW, Soc. Head 1/2-13 x 1-1/4	1
20	3004 031	.. NUT, Hex Jam 1/2-13	1
21	2724 7304	. DOOR, R.H. Inner	1
22	2925 154	.. SETSCREW, Soc. Head 1/2-13 x 1-1/4	1
23	3004 031	.. NUT, Hex Jam 1/2-13	1
24	2724 7305	. DOOR, L.H. Inner.....	1
25	2925 154	.. SETSCREW, Soc. Head 1/2-13 x 1-1/4	1
26	3004 031	.. NUT, Hex Jam 1/2-13	1
27	2774 821	. CAPSCREW, Hex Head 3/8-16 x 2.....	4
28	3662 174	. SPRING, Extension.....	2
29	3042 219	. LOCKNUT, Hex 1/4-20.....	4
30	7299 2555	. ROLLER, Cam.....	4
31	2207 9294	. BUSHING, Roller.....	4
32	3060 464	. WASHER, SAE 1/4	8
33	4425 1536	. HOSE, 1/4 x 27.....	2
34	1028 6150	. DISCONNECT, Male	2

FIGURE 14-8. ANCHOR TOOL

5" Unit

S/N 680232 and Above

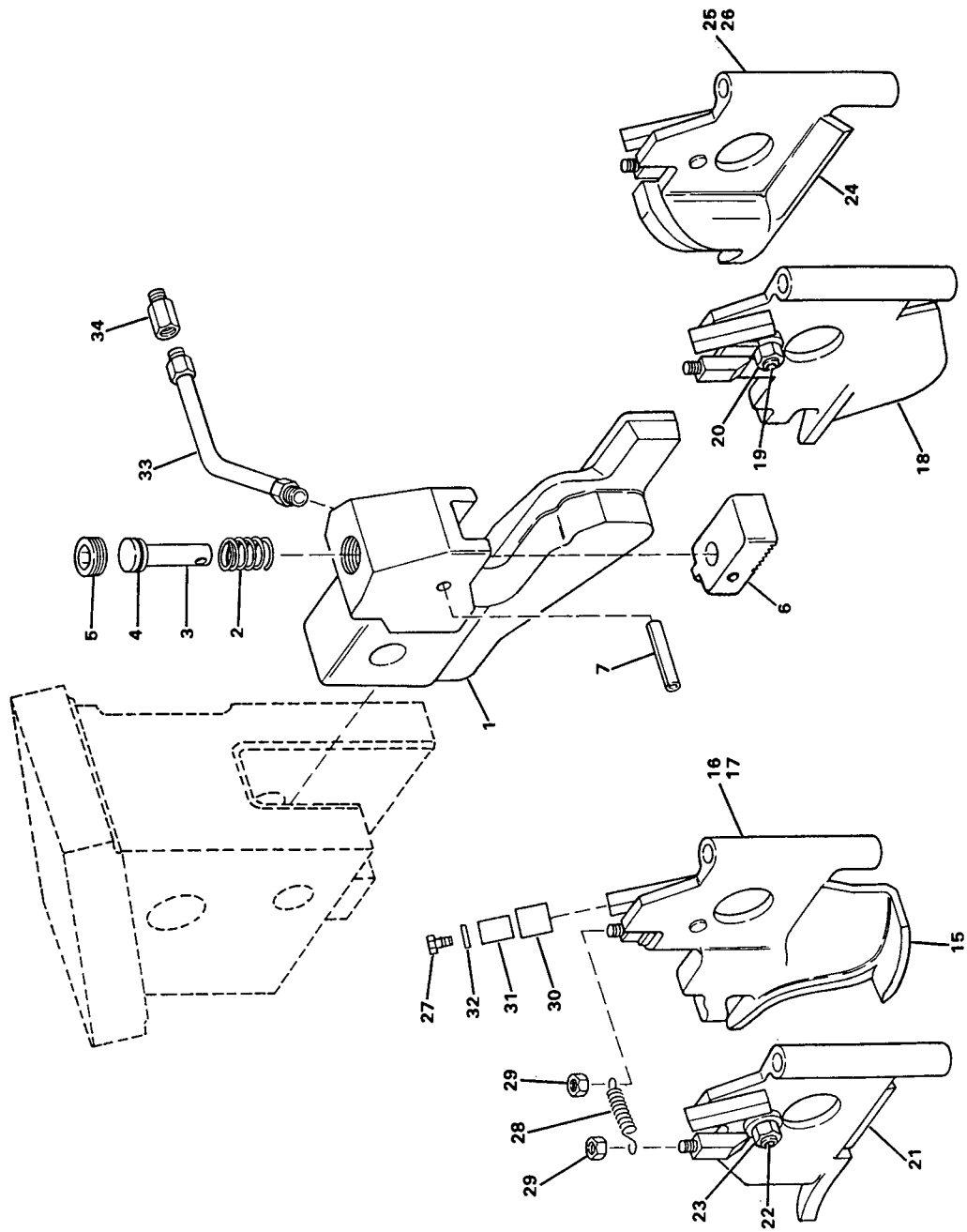




FIGURE 14-8. ANCHOR TOOL 5" UNIT S/N 680232 and Above

ITEM NO.	PART NO.	DESCRIPTION	UNITS PER ASSY
--	9668 0160	UNIT TOOL ASSEMBLY.....	1
--	9668 0064	. ANCHOR HOLDER ASSEMBLY, R.H.	1
1	4391 0002	.. HOLDER, Anchor.....	1
2	3605 901	.. SPRING, Gripper Return	1
3	5841 3795	.. GRIPPER.....	1
4	3570 2078	.. O-Ring	1
5	1559 924	.. PLUG, Pipe 3/4 NPT.....	1
6	1878 0155	.. BLOCK, Gripper.....	1
7	3384 191	.. PIN, Spring 3/16 x 1-1/4	1
--	9668 0065	. ANCHOR HOLDER ASSEMBLY, L.H.	1
8	4391 0001	.. HOLDER, Anchor.....	1
9	3605 901	.. SPRING, Gripper Return	1
10	5841 3795	.. GRIPPER.....	1
11	3570 2078	.. O-Ring	1
12	1559 924	.. PLUG, Pipe 3/4 NPT.....	1
13	1878 0155	.. BLOCK, Gripper.....	1
14	3384 191	.. PIN, Spring 3/16 x 1-1/4	1
15	2724 3361	. DOOR, L.H. Inner.....	1
16	2925 154	.. SETSCREW, Soc. Head 1/2-13 x 1-1/4	1
17	3004 031	.. NUT, Hex Jam 1/2-13	1
18	2724 3360	. DOOR, R.H. Inner	1
19	2925 154	.. SETSCREW, Soc. Head 1/2-13 x 1-1/4	1
20	3004 031	.. NUT, Hex Jam 1/2-13	1
21	2724 3355	. DOOR, L.H. Outer.....	1
22	2925 154	.. SETSCREW, Soc. Head 1/2-13 x 1-1/4	1
23	3004 031	.. NUT, Hex Jam 1/2-13	1
24	2724 3354	. DOOR, R.H. Outer	1
25	2925 154	.. SETSCREW, Soc. Head 1/2-13 x 1-1/4	1
26	3004 031	.. NUT, Hex Jam 1/2-13	1
27	2774 301	. CAPSCREW, Hex Head 3/8-16 x 2.....	4
28	3662 174	. SPRING, Extension.....	2
29	3042 219	. LOCKNUT, Hex 1/4-20.....	4
30	7299 2555	. ROLLER, Cam.....	4
31	2207 9294	. BUSHING, Roller.....	4
32	3060 464	. WASHER, SAE 1/4	8
33	4425 1536	. HOSE, 1/4 x 27.....	2
34	1028 6150	. DISCONNECT, Male	2
35	1878 0304	. BLOCK, Gripper (Unit Lites).....	2

FIGURE 14-9. ANCHOR TOOL

5" Woodings

S/N 680232 and Above

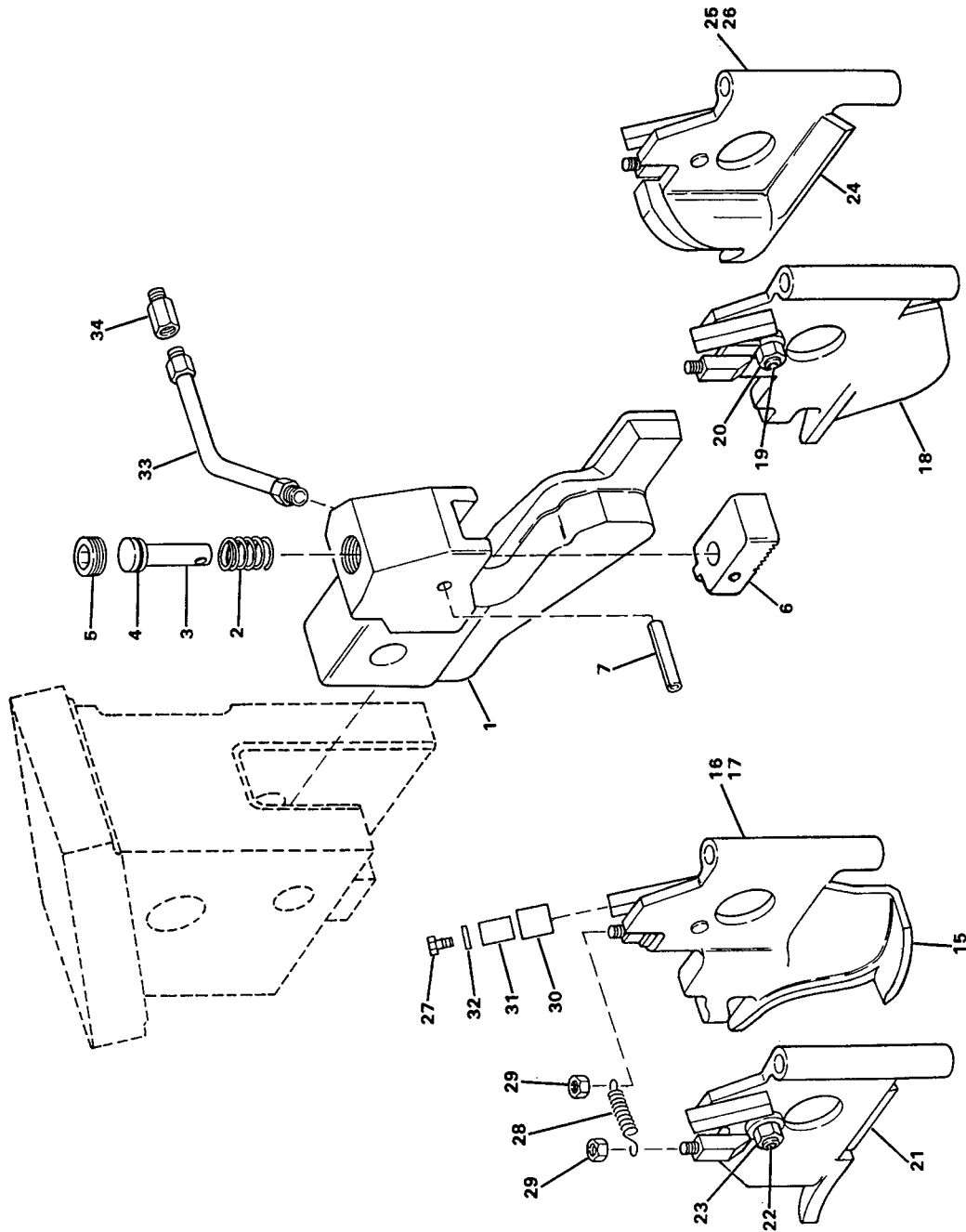




FIGURE 14-9. ANCHOR TOOL 5" WOODINGS S/N 680232 and Above

ITEM NO.	PART NO.	DESCRIPTION	UNITS PER ASSY
--	9668 0134	WOODINGS ANCHOR TOOL ASSEMBLY	1
--	9668 0135	. ANCHOR HOLDER ASSEMBLY, R.H.	1
1	4391 0021	.. HOLDER, Anchor.....	1
2	3605 906	.. SPRING, Gripper Return	1
3	5841 5900	.. GRIPPER.....	1
4	3570 2078	.. O-Ring	1
5	1559 924	.. PLUG, Pipe 3/4 NPT.....	1
6	1878 0245	.. BLOCK, Gripper.....	1
7	3384 191	.. PIN, Spring 3/16 x 1-1/4	1
--	9668 0136	. ANCHOR HOLDER ASSEMBLY, L.H.	1
8	4391 0020	.. HOLDER, Anchor.....	1
9	3605 906	.. SPRING, Gripper Return	1
10	5841 5900	.. GRIPPER.....	1
11	3570 2078	.. O-Ring	1
12	1559 924	.. PLUG, Pipe 3/4 NPT.....	1
13	1878 0245	.. BLOCK, Gripper.....	1
14	3384 191	.. PIN, Spring 3/16 x 1-1/4	1
15	2724 3363	. DOOR, L.H. Inner.....	1
16	2925 154	.. SETSCREW, Soc. Head 1/2-13 x 1-1/4	1
17	3004 031	.. NUT, Hex Jam 1/2-13	1
18	2724 3362	. DOOR, R.H. Inner	1
19	2925 154	.. SETSCREW, Soc. Head 1/2-13 x 1-1/4	1
20	3004 031	.. NUT, Hex Jam 1/2-13	1
21	2724 3355	. DOOR, L.H. Outer.....	1
22	2925 154	.. SETSCREW, Soc. Head 1/2-13 x 1-1/4	1
23	3004 031	.. NUT, Hex Jam 1/2-13	1
24	2724 3354	. DOOR, R.H. Outer	1
25	2925 154	.. SETSCREW, Soc. Head 1/2-13 x 1-1/4	1
26	3004 031	.. NUT, Hex Jam 1/2-13	1
27	2774 826	. CAPSCREW, Hex Head 3/8-16 x 2.....	4
28	3662 174	. SPRING, Extension.....	2
29	3042 219	. LOCKNUT, Hex 1/4-20.....	4
30	7299 2555	. ROLLER, Cam.....	4
31	2207 9294	. BUSHING, Roller.....	4
32	3060 464	. WASHER, SAE 1/4	8
33	4425 1536	. HOSE, 1/4 x 27.....	2
34	1028 6150	. DISCONNECT, Male	2

FIGURE 14-10. ANCHOR TOOL

5" Fair

S/N 680232 and Above

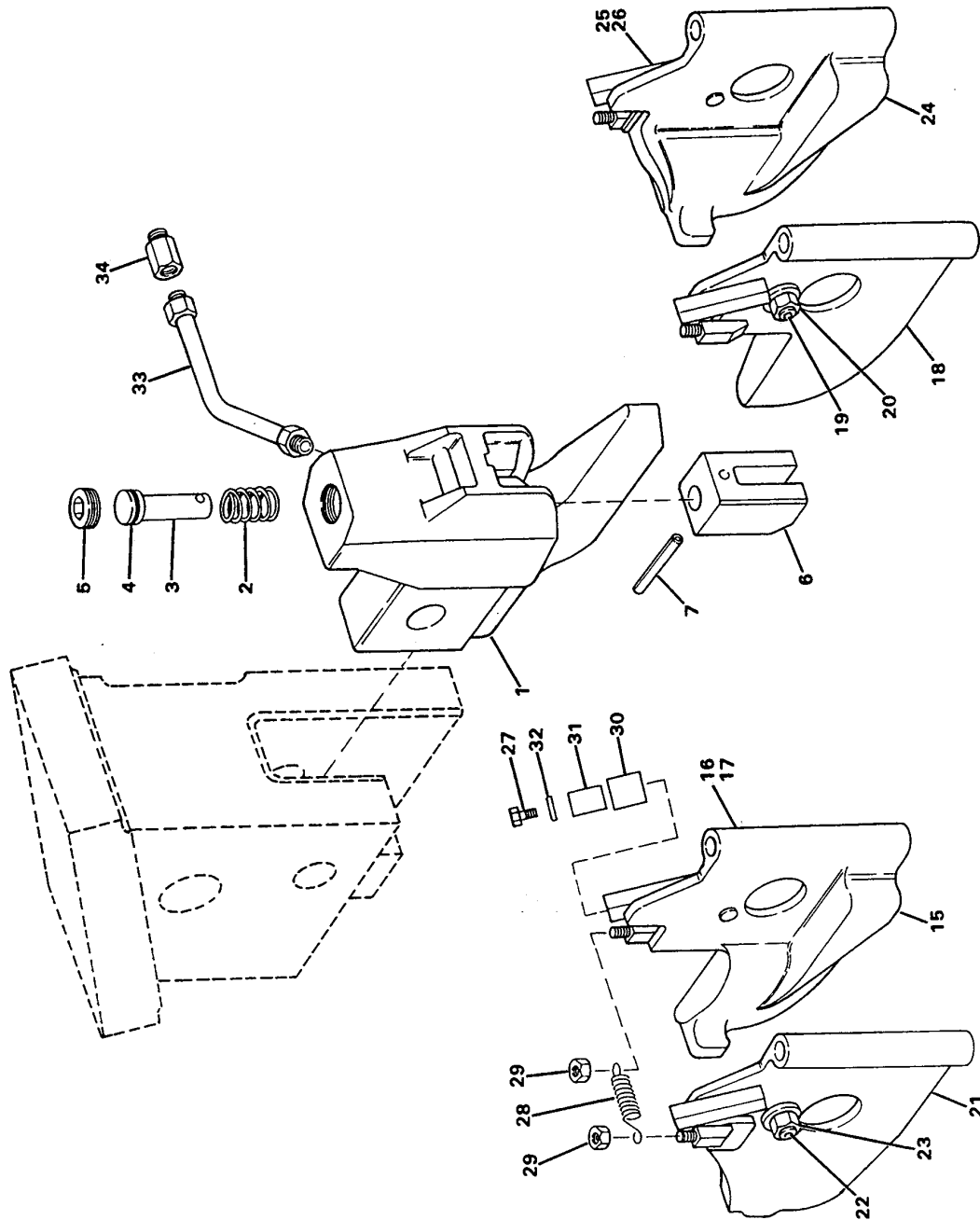




FIGURE 14-10. ANCHOR TOOL 5" FAIR S/N 680232 and Above

ITEM NO.	PART NO.	DESCRIPTION	UNITS PER ASSY
--	9668 0232	5" FAIR TOOL ASSEMBLY	1
--	9668 0230	. ANCHOR HOLDER ASSEMBLY, R.H.	1
1	4391 0017	.. HOLDER, Anchor	1
2	3605 901	.. SPRING, Gripper Return.....	1
3	5841 3795	.. GRIPPER, Hydraulic	1
4	3570 2075	.. O-Ring.....	1
5	1559 924	.. PLUG, Pipe 3/4 NPT	1
6	1878 0154	.. SHOE, Clamp	1
7	3384 191	.. PIN, Spring 3/16 x 1-1/4	1
--	9668 0231	. ANCHOR HOLDER ASSEMBLY, L.H.	1
8	4391 0016	.. HOLDER, Anchor	1
9	3605 901	.. SPRING, Gripper Return.....	1
10	5841 3795	.. GRIPPER, Hydraulic	1
11	3570 2075	.. O-Ring.....	1
12	1559 924	.. PLUG, Pipe 3/4 NPT	1
13	1878 0154	.. SHOE, Clamp	1
14	3384 191	.. PIN, Spring 3/16 x 1-1/4	1
15	2724 4358	. DOOR, L.H. Inner	1
16	2925 154	.. SETSCREW, Soc. Head 1/2-13 x 1-1/4	1
17	3004 031	.. NUT, Hex Jam 1/2-13	1
--*	5885 0042	.. ROLLER, Support	1
--*	5885 0041	.. SPRING, Anchor	1
18	2724 4356	. DOOR, R.H. Inner	1
19	2925 154	.. SETSCREW, Soc. Head 1/2-13 x 1-1/4	1
20	3004 031	.. NUT, Hex Jam 1/2-13	1
--*	5885 0042	.. ROLLER, Support	1
--*	5885 0041	.. SPRING, Anchor	1
21	2724 4359	. DOOR, L.H. Outer.....	1
22	2925 154	.. SETSCREW, Soc. Head 1/2-13 x 1-1/4	1
23	3004 031	.. NUT, Hex Jam 1/2-13	1
--*	5885 0042	.. ROLLER, Support	1
--*	5885 0041	.. SPRING, Anchor	1
24	2724 4357	. DOOR, R.H. Outer	1
25	2925 154	.. SETSCREW, Soc. Head 1/2-13 x 1-1/4	1
26	3004 031	.. NUT, Hex Jam 1/2-13	1
--*	5885 0042	.. ROLLER, Support	1
--*	5885 0041	.. SPRING, Anchor	1
27	2774 821	. CAPSCREW, Hex Head 3/8-16 x 2.....	4
28	3662 174	. SPRING, Extension	2
29	3042 219	. LOCKNUT, Hex 1/4-20.....	4
--	9668 0070	. ROLLER AND BUSHING ASSEMBLY.....	4
30	7299 2555	.. ROLLER, Cam	1
31	2207 9294	.. BUSHING, Roller.....	1
32	3060 464	. WASHER, SAE 1/4.....	8
33	4425 1536	. HOSE, 1/4 x 27.....	2
34	1028 6150	. DISCONNECT, Male.....	2
35*	4847 0012	. LINER, Chute	2

FIGURE 14-11. ANCHOR TOOL

Fair V

S/N 680232 and Above

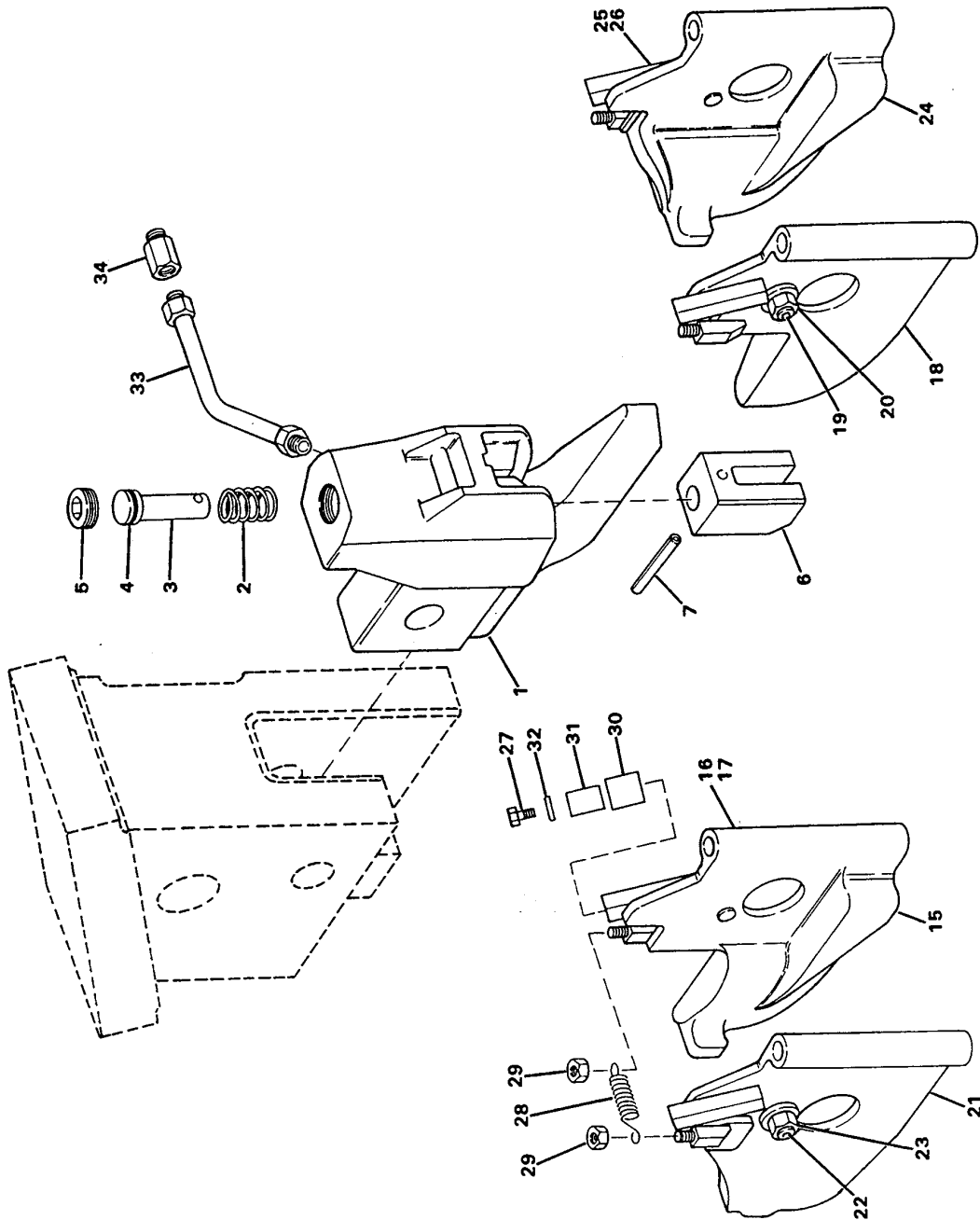




FIGURE 14-11. ANCHOR TOOL FAIR V S/N 680232 and Above

ITEM NO.	PART NO.	DESCRIPTION	UNITS PER ASSY
--	9668 0233	FAIR TOOL ASSEMBLY	1
--	9668 0234	. ANCHOR HOLDER ASSEMBLY, R.H.	1
1	4391 0030	.. HOLDER, Anchor	1
2	3605 901	.. SPRING, Gripper Return.....	1
3	5841 3795	.. GRIPPER, Hydraulic	1
4	3570 2075	.. O-Ring.....	1
5	1559 924	.. PLUG, Pipe 3/4 NPT	1
6	1878 0305	.. BLOCK, Gripper	1
7	3384 191	.. PIN, Spring 3/16 x 1-1/4	1
--	9668 0235	. ANCHOR HOLDER ASSEMBLY, L.H.	1
8	4391 0031	.. HOLDER, Anchor	1
9	3605 901	.. SPRING, Gripper Return.....	1
10	5841 3795	.. GRIPPER, Hydraulic	1
11	3570 2075	.. O-Ring.....	1
12	1559 924	.. PLUG, Pipe 3/4 NPT	1
13	1878 0305	.. BLOCK, Gripper	1
14	3384 191	.. PIN, Spring 3/16 x 1-1/4	1
15	2724 4360	. DOOR, L.H. Inner	1
16	2925 154	.. SETSCREW, Soc. Head 1/2-13 x 1-1/4	1
17	3004 031	.. NUT, Hex Jam 1/2-13	1
--*	5885 0042	.. ROLLER, Support	1
--*	5885 0041	.. SPRING, Anchor	1
18	2724 4361	. DOOR, R.H. Inner	1
19	2925 154	.. SETSCREW, Soc. Head 1/2-13 x 1-1/4	1
20	3004 031	.. NUT, Hex Jam 1/2-13	1
--*	5885 0042	.. ROLLER, Support	1
--*	5885 0041	.. SPRING, Anchor	1
21	2724 4362	. DOOR, L.H. Outer.....	1
22	2925 154	.. SETSCREW, Soc. Head 1/2-13 x 1-1/4	1
23	3004 031	.. NUT, Hex Jam 1/2-13	1
--*	5885 0042	.. ROLLER, Support	1
--*	5885 0041	.. SPRING, Anchor	1
24	2724 4363	. DOOR, R.H. Outer	1
25	2925 154	.. SETSCREW, Soc. Head 1/2-13 x 1-1/4	1
26	3004 031	.. NUT, Hex Jam 1/2-13	1
--*	5885 0042	.. ROLLER, Support	1
--*	5885 0041	.. SPRING, Anchor	1
27	2774 821	. CAPSCREW, Hex Head 3/8-16 x 2.....	4
28	3662 174	. SPRING, Extension	2
29	3042 219	. LOCKNUT, Hex 1/4-20.....	4
--	9668 0070	. ROLLER AND BUSHING ASSEMBLY.....	4
30	7299 2555	.. ROLLER, Cam	1
31	2207 9294	.. BUSHING, Roller.....	1
32	3060 464	. WASHER, SAE 1/4.....	8
33	4425 1536	. HOSE, 1/4 x 27.....	2
34	1028 6150	. DISCONNECT, Male.....	2

FIGURE 14-12. ANCHOR TOOL Unit 5

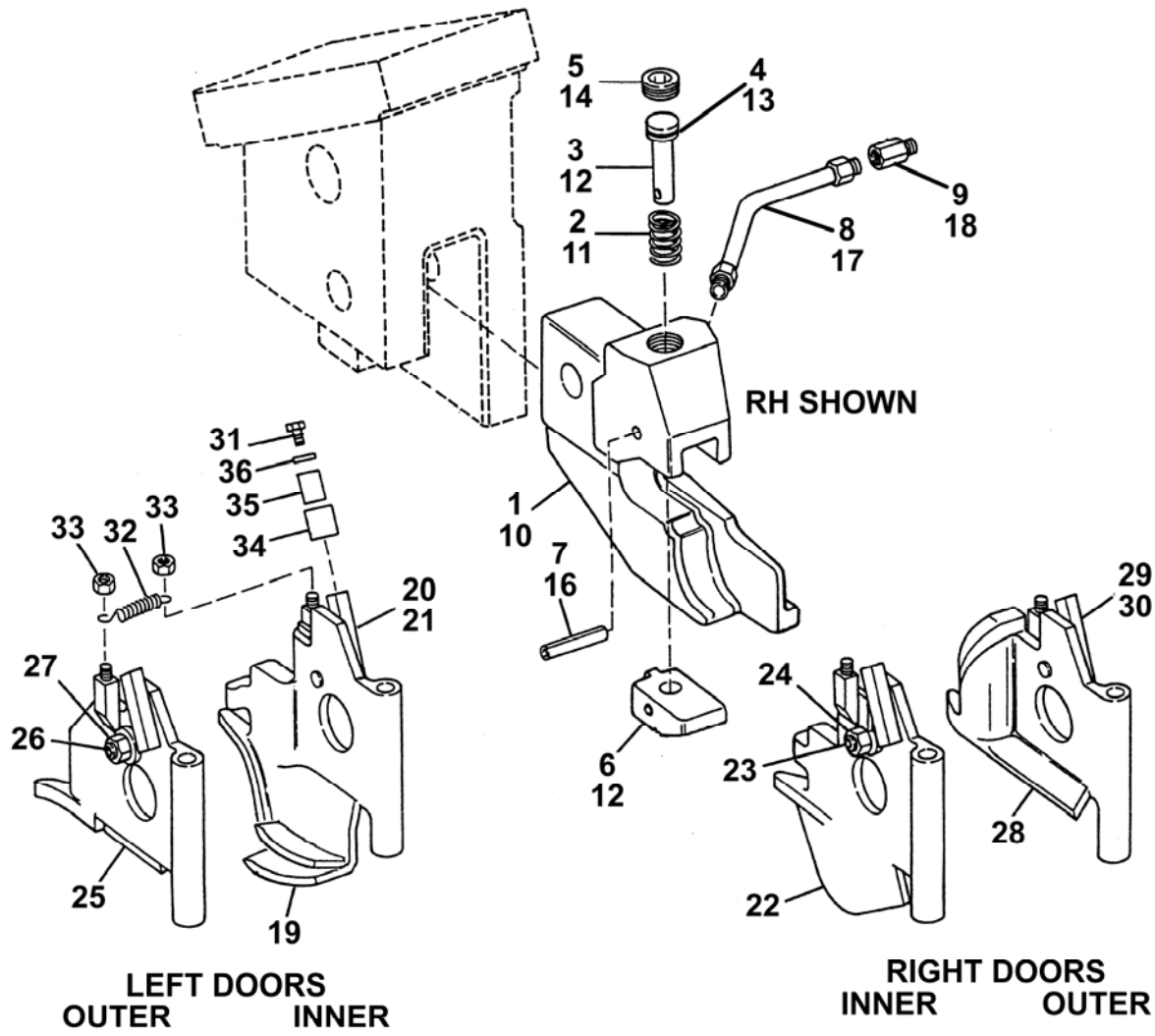




FIGURE 14-12. ANCHOR TOOL Unit 5

ITEM NO.	PART NO.	DESCRIPTION	UNITS PER ASSY
--	96680240	UNIT 5 TOOL ASSEMBLY	1
--	96680241	. RH ANCHOR HOLDER ASSEMBLY	1
1	43910038	.. Anchor Holder	1
2	3605901	.. Gripper Return Spring	1
3	58413795	.. Hydraulic Gripper	1
4	35702078	.. O-Ring	1
5	1559924	.. Pipe Plug, 3/4 NPT	1
6	18780156	.. Gripper Block	1
7	3384191	.. Spring Pin, 3/16 x 1-1/4	1
8	44251536	.. Hose, 1/4 x 27	1
9	10286150	.. Male Disconnect	1
--	96680242	. LH ANCHOR HOLDER ASSEMBLY	1
10*	43910039	.. Anchor Holder	1
11	3605901	.. Gripper Return Spring	1
12	58413795	.. Hydraulic Gripper	1
13	35702078	.. O-Ring	1
14	1559924	.. Pipe Plug, 3/4 NPT	1
15	18780156	.. Gripper Block	1
16	3384191	.. Spring Pin, 3/16 x 1-1/4	1
17	44251536	.. Hose, 1/4 x 27	1
18	10286150	.. Male Disconnect	1
19	27244364	. LH Inner Door	1
20	2925154	.. Socket Hd Setscrew, 1/2-13 x 1-1/4	1
21	3025031	.. Hex Nut, 1/2-13	1
--*	58850042	.. Support Roller	1
--*	58850041	.. Anchor Spring	1
22	27244365	. RH Inner Door	1
23	2925154	.. Socket Hd Setscrew, 1/2-13 x 1-1/4	1
24	3025031	.. Hex Nut, 1/2-13	1
--*	58850042	.. Support Roller	1
--*	58850041	.. Anchor Spring	1
25	27243355	. LH Outer Door	1
26	2925154	.. Socket Hd Setscrew, 1/2-13 x 1-1/4	1
27	3025031	.. Hex Nut, 1/2-13	1
--*	58850042	.. Support Roller	1
--*	58850041	.. Anchor Spring	1

ITEM NO.	PART NO.	DESCRIPTION	UNITS PER ASSY
28	27243354	. RH Outer Door	1
29	2925154	.. Socket Hd Setscrew, 1/2-13 x 1-1/4	1
30	3025031	.. Hex Nut, 1/2-13	1
--*	58850042	.. Support Roller	1
--*	58850041	.. Anchor Spring	1
Note: Items 31 through 36 are repeated for the Right Doors, but are not Shown on the drawing for clarity.			
31	2774821	. Hex Head Capscrew, 3/8-16 x 2	4
32	3662174	. Extension Spring	2
33	3042219	. Hex Locknut, 1/4-20	4
--	96680070	. ROLLER AND BUSHING ASSEMBLY	4
34	72992555	.. Cam Roller	1
35	22079294	.. Roller Bushing	1
36	3060465	. SAE Washer, 1/4 Zinc Plated	8
37*	48470012	. Chute Liner	2

FIGURE 14-13. ANCHOR TOOL

Traktite

S/N 680232 and Above

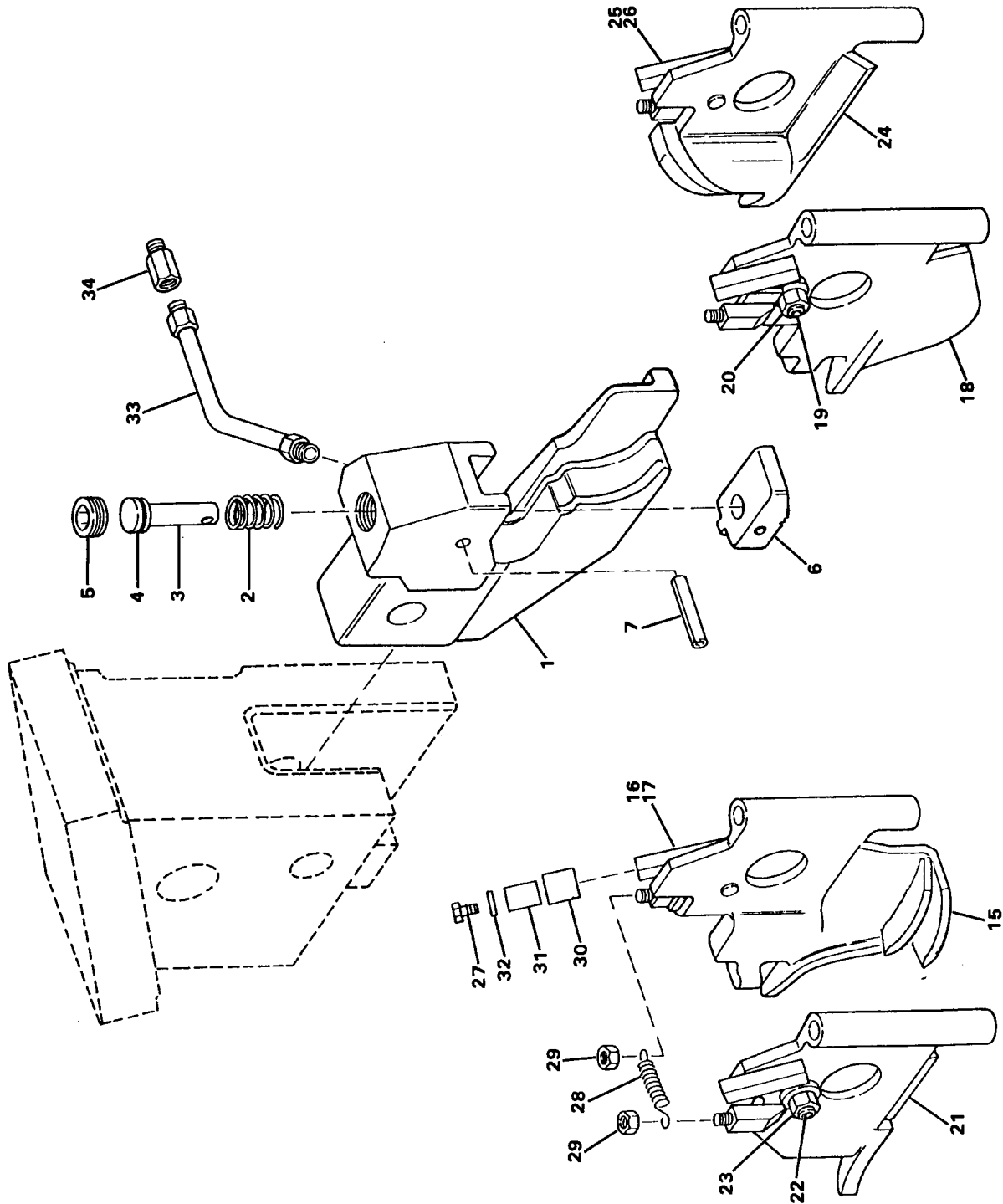
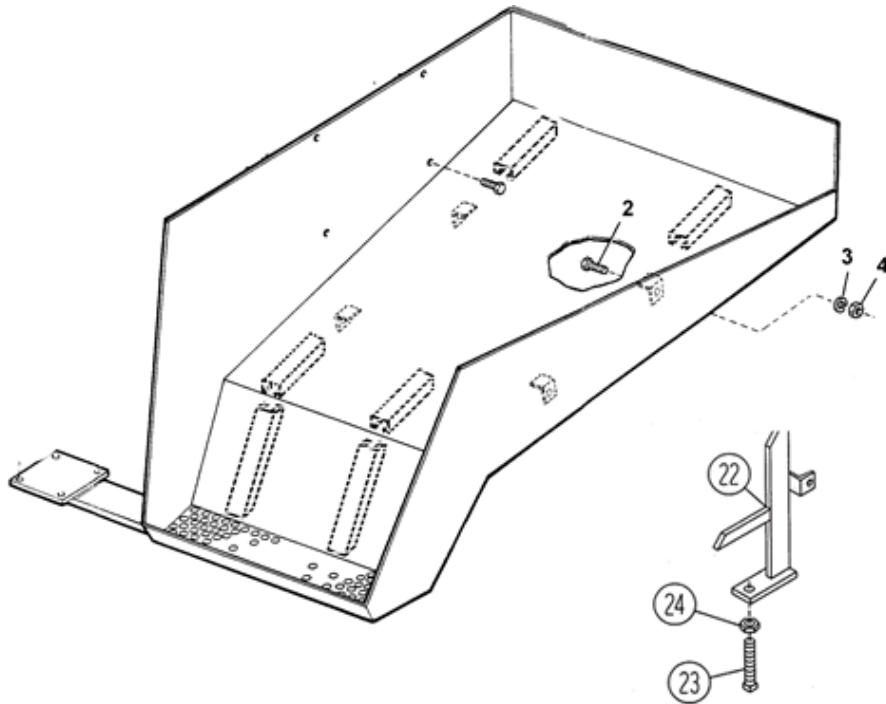




FIGURE 14-13. ANCHOR TOOL TRAKTITE S/N 680232 and Above

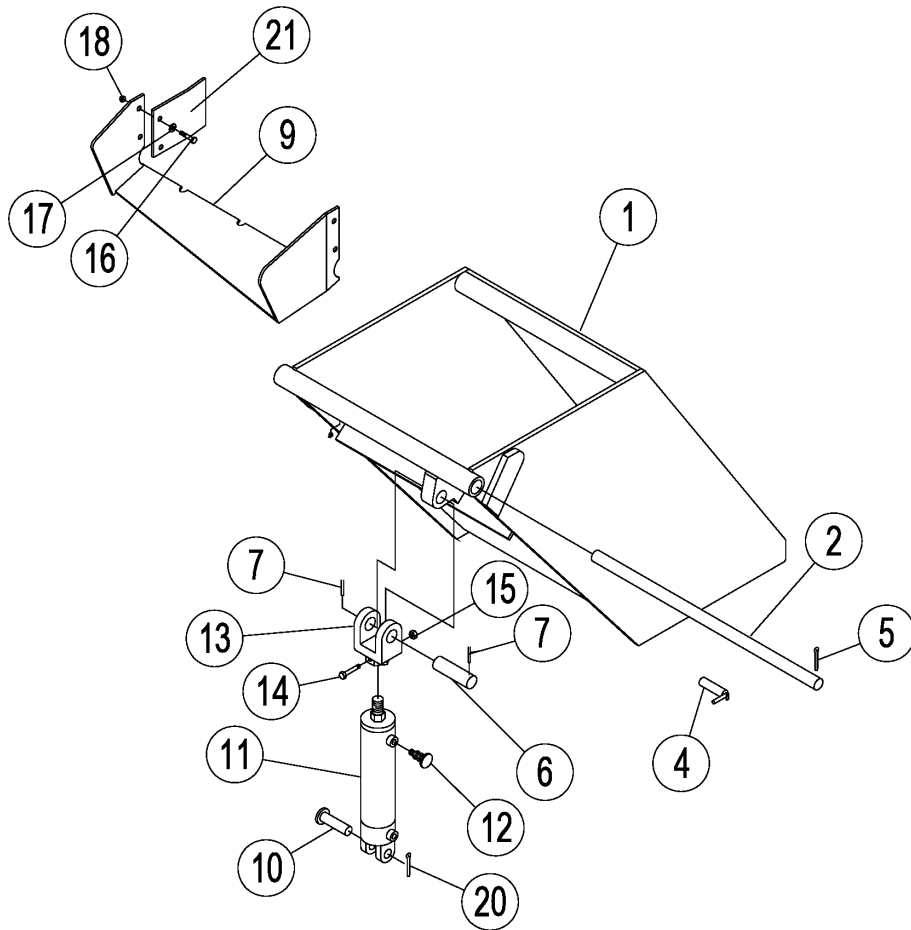
ITEM NO.	PART NO.	DESCRIPTION	UNITS PER ASSY
--	9668 0211	TRAKTITE TOOL ASSEMBLY	1
--	9668 0212	. ANCHOR HOLDER ASSEMBLY, R.H.	1
1	4391 0027	.. HOLDER, Anchor.....	1
2	3607 470	.. SPRING, Gripper Return	1
3	5841 5751	.. GRIPPER.....	1
4	3570 2923	.. O-RING.....	1
5	1878 0298	.. BLOCK, Gripper.....	1
6	3384 191	.. PIN, Spring 3/16 x 1-1/4	1
7	1559 925	.. PLUG, Pipe 1 NPT.....	1
--	9668 0213	. ANCHOR HOLDER ASSEMBLY, L.H.	1
8	4391 0026	.. HOLDER, Anchor.....	1
9	3607 470	.. SPRING, Gripper Return	1
10	5841 5751	.. GRIPPER.....	1
11	3570 2923	.. O-RING.....	1
12	1878 0298	.. BLOCK, Gripper.....	1
13	3384 191	.. PIN, Spring 3/16 x 1-1/4	1
14	1559 925	.. PLUG, Pipe 1 NPT.....	1
15	2724 7306	. DOOR, L.H. Outer.....	1
16	2925 154	.. SETSCREW, Soc. Head 1/2-13 x 1-1/4	1
17	3004 031	.. NUT, Hex Jam 1/2-13	1
18	2724 7307	. DOOR, R.H. Outer	1
19	2925 154	.. SETSCREW, Soc. Head 1/2-13 x 1-1/4	1
20	3004 031	.. NUT, Hex Jam 1/2-13	1
21	2724 7305	. DOOR, R.H. Inner	1
22	2925 154	.. SETSCREW, Soc. Head 1/2-13 x 1-1/4	1
23	3004 031	.. NUT, Hex Jam 1/2-13	1
24	2724 7304	. DOOR, L.H. Inner.....	1
25	2925 154	.. SETSCREW, Soc. Head 1/2-13 x 1-1/4	1
26	3004 031	.. NUT, Hex Jam 1/2-13	1
27	2774 821	. CAPSCREW, Hex Head 3/8-16 x 2.....	4
28	3662 174	. SPRING, Extension.....	2
29	3042 219	. LOCKNUT, Hex 1/4-20.....	4
30	7299 2555	. ROLLER, Cam.....	4
31	2207 9294	. BUSHING, Roller.....	4
32	3060 464	. WASHER, SAE 1/4	8
33	4425 1536	. HOSE, 1/4 x 27.....	2
34	1028 6150	. DISCONNECT, Male	2

FIGURE 15-1. ANCHOR BIN S/N 680287 and Above



ITEM NO.	PART NO.	DESCRIPTION	UNITS PER ASSY
1	1763 0010	. BIN, Anchor.....	1
2	2775 301	. CAPSCREW, Hex Head ½ x 1-1/2.....	4
3	3064 476	. LOCKWASHER, ½.....	4
4	3001 031	. NUT, Hex ½.....	4
22	2145 6400	. STOP, Chute Mounting (Part of Bin).....	1
23	2948 283	. SETSCREW, Square Head 3/4-10 x 4.....	1
24	3004 051	. NUT, Hex Jam 3/4-10.....	1

FIGURE 15-2. ANCHOR LOADER Standard S/N 680287 and Above



ITEM NO.	PART NO.	DESCRIPTION	UNITS PER ASSY
1	21950011	. LOADER, Anchor.....	1
2	68617255	. SHAFT, Anchor Loader	1
4	53648291	. LOCK PIN	1
5	3070859	. PIN, Cotter ¼ x 2-1/2	2
6	54268050	. PIN, Boom Cylinder.....	1
7	3384777	. PIN, Hicks Spring.....	2
9	24350007	. CHUTE, Transfer	1
10	3301955	. PIN, Clevis 1-3/8 x 5	1
11	28553734	. CYLINDER, Bin Lift.....	1
12	21880006	. BREATHER (Cylinder).....	1
13	66058841	. ROD, Clevis	1
14	2774841	. CAPSCREW, Hex Head 3/8 x 3.....	1
15	3042019	. LOCKNUT, 3/8.....	1
16	2774831	. CAPSCREW, Hex Head 3/8 x 2-1/2.....	4
17	3060470	. WASHER, SAE 3/8.....	8
18	3042019	. LOCKNUT, Hex 3/8-16	4
19	3060091	. WASHER, Wrought 4" OD	2
20	3070855	. PIN, Cotter 1/4 x 2.....	1
21	56300030	. PLATE, Anchor Guide	1
22*	56420071	. DECAL, Overhanging Anchor.....	2

FIGURE 15-3. ANCHOR LOADER
Optional Large – W/Funnel
S/N 680287 and Above

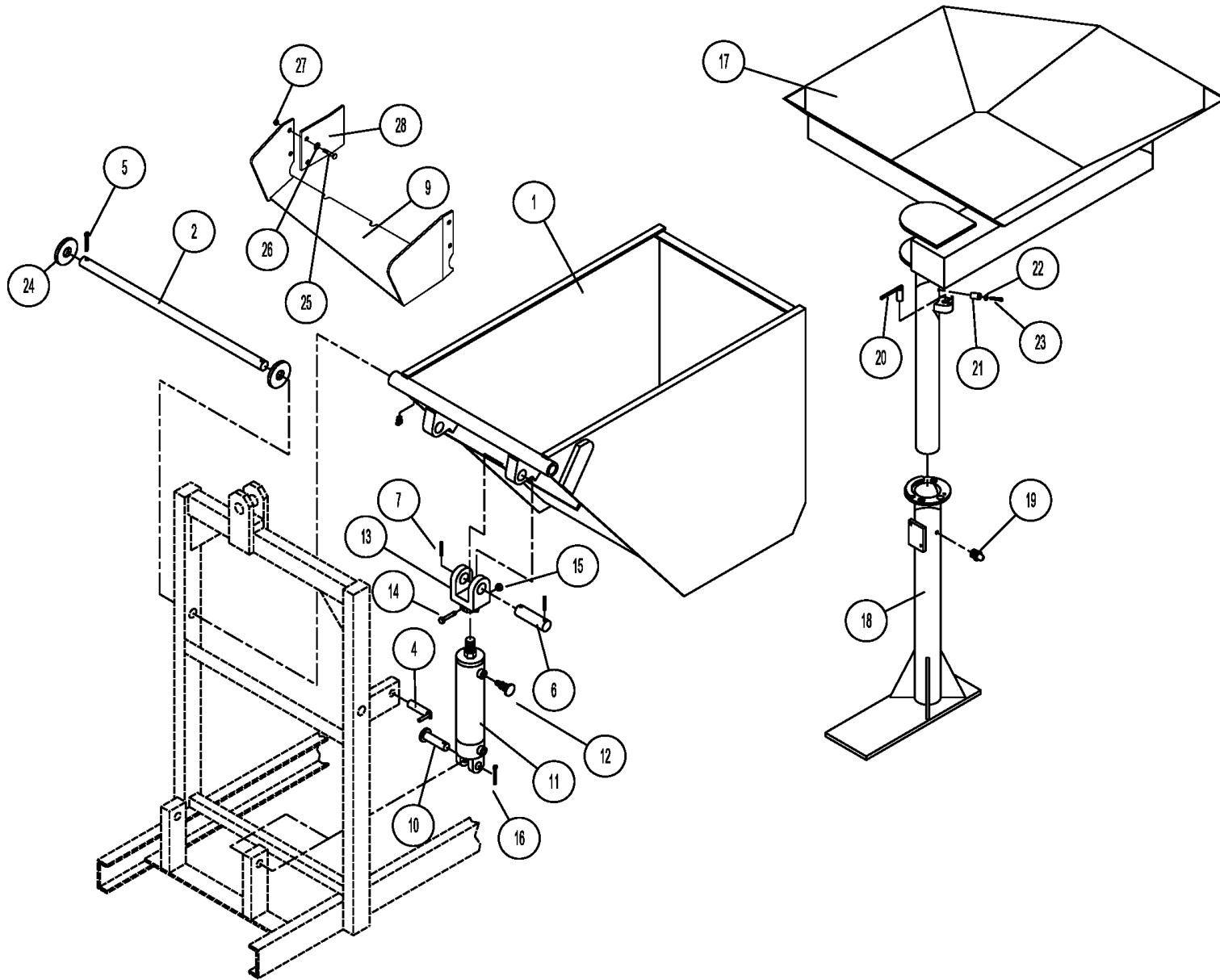


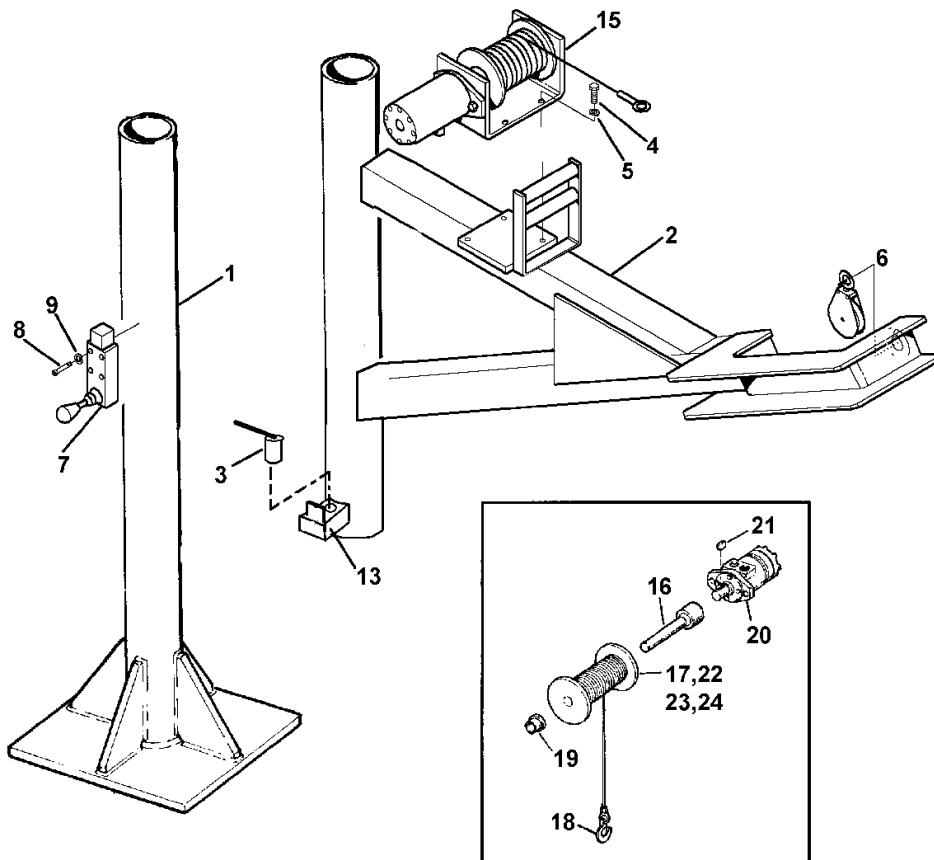


FIGURE 15-3. ANCHOR LOADER Optional Large – W/Funnel S/N 680287 and Above

ITEM NO.	PART NO.	DESCRIPTION	UNITS PER ASSY
1	21950014	. BIN, Anchor Dump Large Capacity	1
2	68617255	. SHAFT, Anchor Loader	1
4	53648291	. LOCK PIN	2
5	3070859	. PIN, Cotter ¼ x 2-1/2	2
6	54268050	. PIN, Boom Cylinder	2
7	3384777	. PIN, Hicks Spring	4
9	24350007	. CHUTE, Transfer	1
10	3301955	. PIN, Clevis 1-3/8 x 5	2
11	28553734	. CYLINDER, Bin Lift	2
12	21880006	. BREATHER (Cylinder)	2
13	66058841	. ROD, Clevis	2
14	2774841	. CAPSCREW, Hex Head 3/8 x 3	2
15	3042019	. LOCKNUT, 3/8	2
16	3070855	. PIN, Cotter ¼ x 2	2
17	35120004	. FUNNEL, Anchor Bin	1
18	82656064	. SUPPORT, Winch Boom Pivot	1
19	3801052	. FITTING, Grease	2
20	53647769	. PIN, Winch Boom Lock	1
21	14372090	. STOP, Winch-Boom Lock-Pin	1
22	2774321	. CAPSCREW, Hex Head ¼ x 2	1
23	3064464	. LOCKWASHER, ¼	1
24	3060091	. WASHER, Wrought 4" OD	2
25	2774831	. CAPSCREW, HH 3/8 x 2-1/2	4
26	3060470	. WASHER, SAE 3/8	8
27	3042019	. LOCKNUT, 3/8-16	4
28	56300030	. PLATE, Anchor Guide	1
29*	56420071	. DECAL, Overhanging Anchor	2

FIGURE 21-1. BOOM & WINCH

S/N 680287 and Above



ITEM NO.	PART NO.	DESCRIPTION	UNITS PER ASSY
1	82656064	. MOUNTING, Boom and Winch.....	1
2	19840090	. SUPPORT, Boom Winch.....	1
3	53647769	. PIN, Handle/Lock.....	1
4	2774781	. CAPSCREW, Hex Head 3/8 x 1.....	4
5	3064470	. LOCKWASHER, 3/8.....	4
6	18360040	. BLOCK, Pulley Swivel Eye.....	1
7	1696789	. VALVE, Directional.....	1
8	2774321	. CAPSCREW, Hex Head 1/4 x 2.....	4
9	3064464	. LOCKWASHER, 1/4.....	4
10*	1604900	. VALVE, Flow.....	1
11*	24709080	. CLAMP, Double Hose.....	3
12*	3801052	. FITTING, Grease.....	2
13	14372090	. STOP, Boom Lock.....	1
14	96410457	. WINCH/MOTOR ASSEMBLY.....	1
15	34770039	. . FRAME, Winch.....	1
16	68671361	. . SHAFT AND COUPLING ASSEMBLY..	1
17	30780301	. . DRUM, Winch.....	1
18	96390160	. . CABLE AND HOOK ASSEMBLY.....	1
--	44050333*	. . . HOOK.....	1
19	22103883	. . BUSHING, Frame.....	1
20	50230040	. . MOTOR, Winch.....	1
21	3366552	. . . Key.....	1
22	2924301	. . SETSCREW, Soc. Head 5/16-18 x 1/2 ..	1
23	3384877	. . PIN, Spring 5/16 x 2.....	1
24	3384512	. . PIN, Spring 3/16 x 2.....	1
25	2775311	. . CAPSCREW, Hex Head 1/2-13 x 1-3/4 .	2
26	3064476	. . LOCKWASHER, 1/2.....	2
27	3001031	. . NUT, Hex 1/2-13.....	2

FIGURE 22-1A. TURNTABLE
S/N 680306 and Above

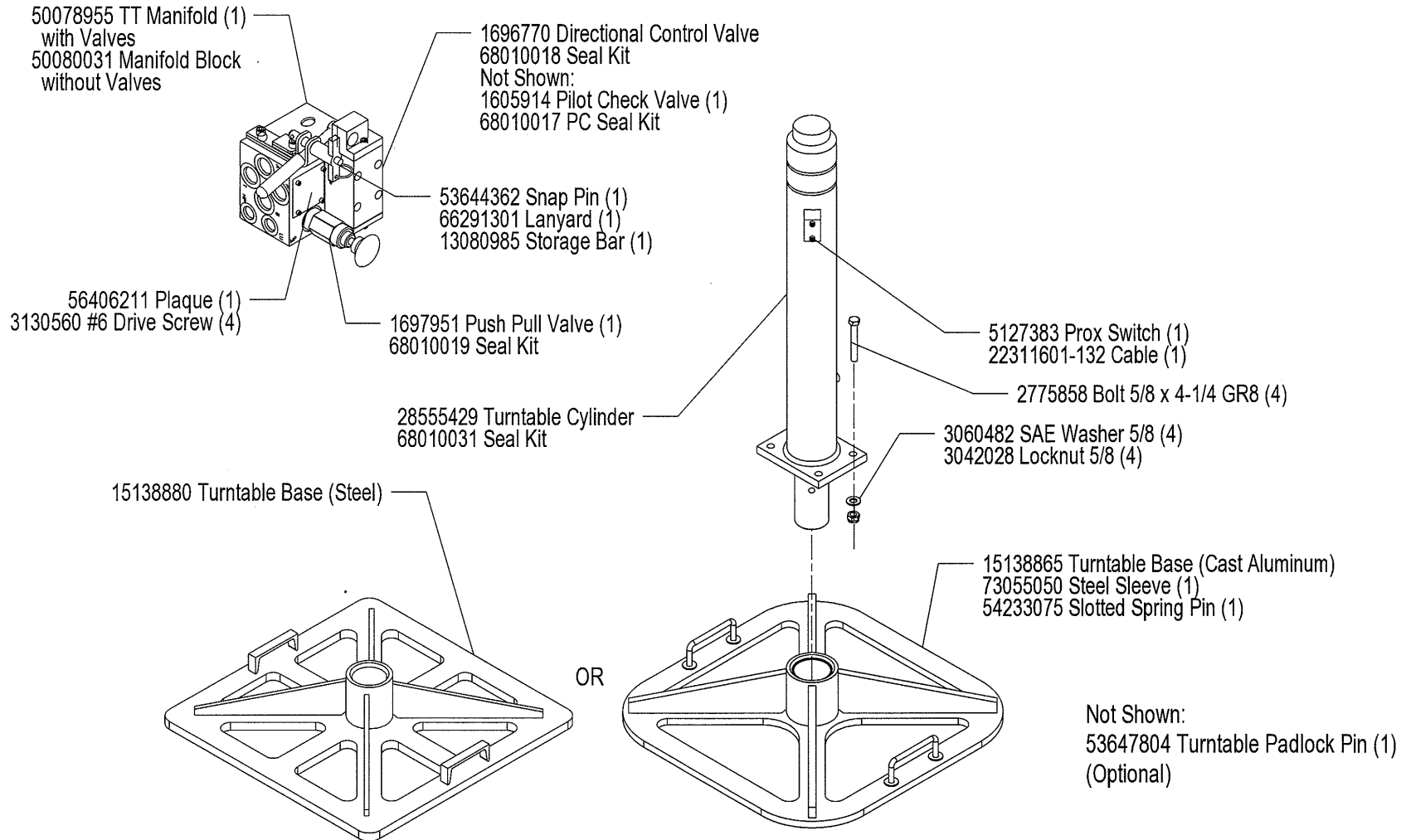


FIGURE 22-2. TURNTABLE Optional Sliding Style S/N 680287 and Above

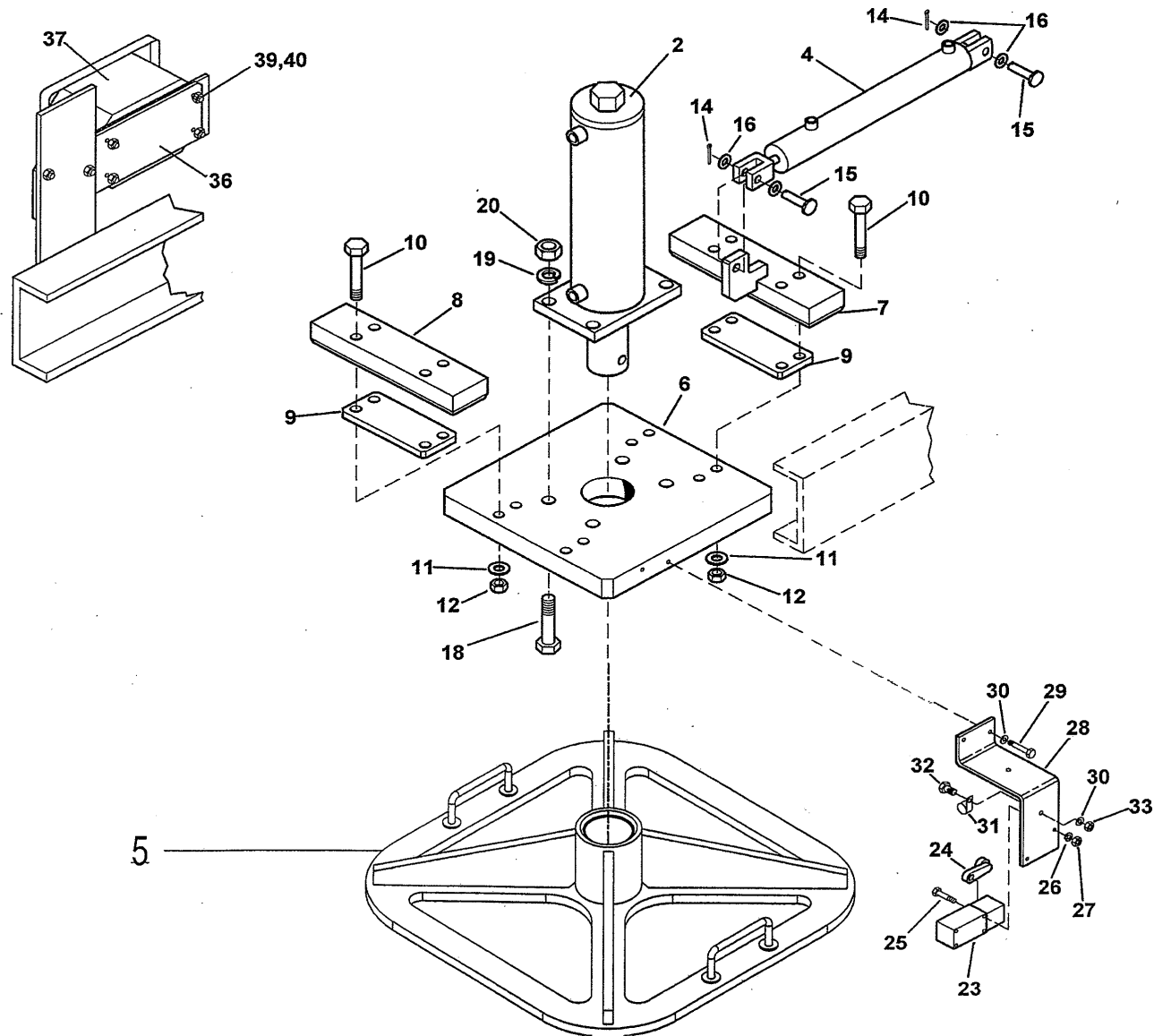
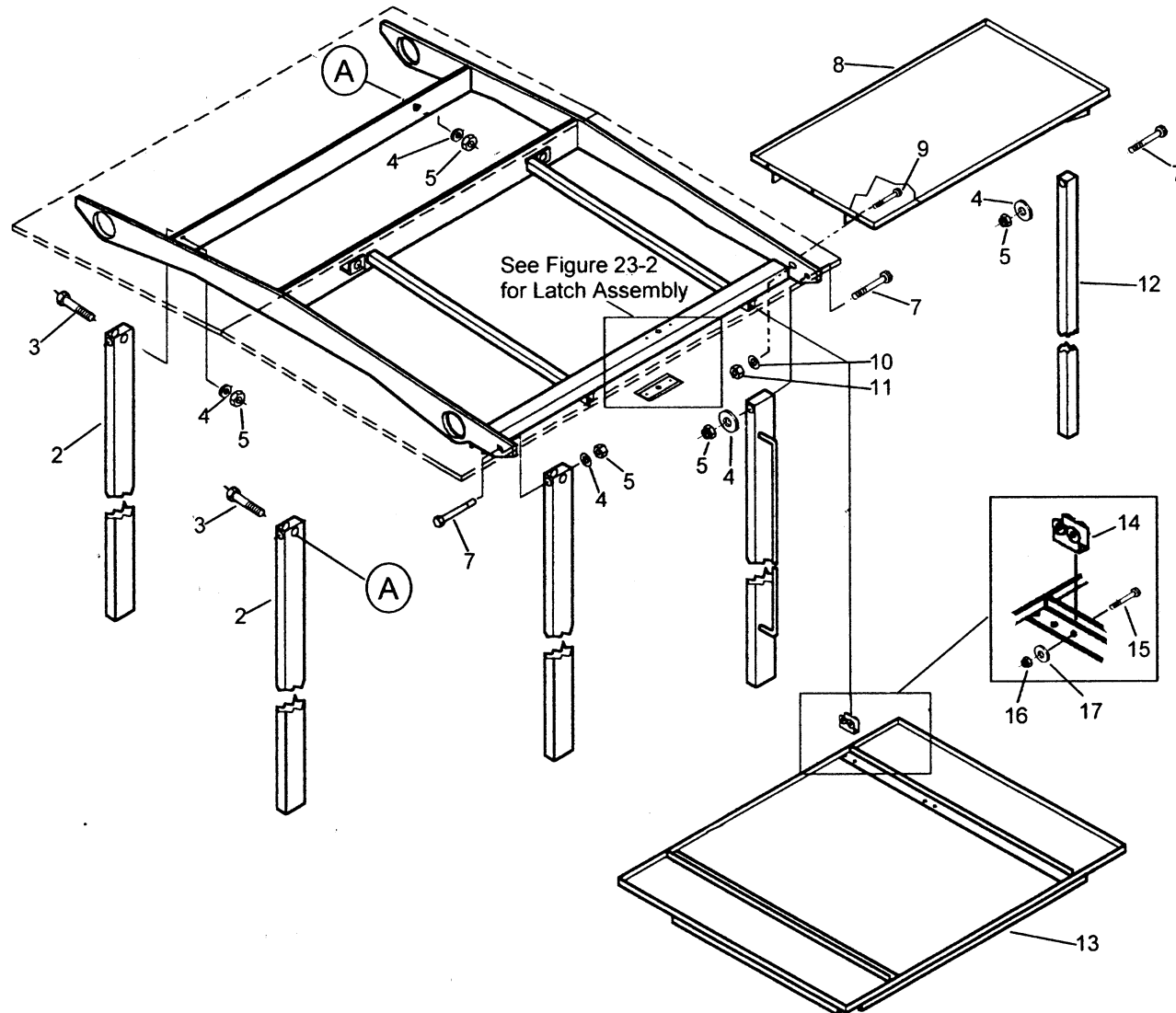


FIGURE 22-2. TURNTABLE Optional Sliding Style S/N 680287 and Above

ITEM NO.	PART NO.	DESCRIPTION	UNITS PER ASSY
1*	33380021	. FRAME, Main	1
2	28855429	. CYLINDER, Set-Off	1
3*	2076240	. ADAPTER	2
4	28850094	. CYLINDER, Spotting	1
5	15138865	. BASE, Turntable.....	1
6	56150410	. MOUNTING, Sliding Turntable Plate	1
7	13413501	. RETAINER, Rear Bar.....	1
8	13413500	. RETAINER, Front Bar	1
9	13225735	. BAR, Spacer.....	2
10	2775875	. CAPSCREW, Hex Head 5/8-11 x 4	8
11	3042028	. LOCKNUT, Hex 5/8-11.....	8
12	3060482	. WASHER, SAE 5/8	16
13*	2080440	. ELBOW, 90°	2
14	3070313	. PIN, Cotter 1/8 x 7/8	2
15	3301393	. PIN, Clevis 1/2 x 2-1/4.....	2
16	3060476	. WASHER, SAE 1/2	4
17*	1698859	. VALVE, Solenoid ().....	1
18	2775858	. CAPSCREW, Hex Head 5/8x4-1/4	4
19	3060482	. WASHER, SAE 5/8	4
20	3042028	. LOCKNUT, Hex 5/8-11.....	4
21	2775901	. CAPSCREW, Hex Head 5/8-11 x 6	1
22	3043022	. LOCKNUT, Hex 5/8-11.....	1
23	5127230	. SWITCH, Limit.....	1
24	47651451	. LEVER, Limit Switch.....	1
25	2837661	. SCREW, RH Machine #10-24 x 2-1/2.....	2
27	3042011	. LOCKNUT, Hex #10-24.....	2
28	21000180	. BRACKET, Limit Switch	1
29	2774281	. CAPSCREW, Hex Head 1/4-20 x 1	2
30	3064464	. LOCKWASHER, 1/4.....	2
31	24587358	. CLAMP, Cable.....	2
32	2774271	. CAPSCREW, Hex Head 1/4 x 3/4.....	2
33	3001011	. NUT, Hex 1/4-20.....	2

ITEM NO.	PART NO.	DESCRIPTION	UNITS PER ASSY
34	3060465	. WASHER, SAE 1/4.....	2
36	13128450	. BRACKET, Switch Box	1
37	96680330	. SWITCH BOX ASSEMBLY.....	1
38*	5128935	. BREAKER, 10 Amp Circuit	1
39	2837631	. SCREW, RH Machine #10 x .75.....	4
40	3042011	. LOCKNUT, #10.....	4
41*	53647811	. PIN, Turntable Padlock.....	1
42*	1603845	. VALVE, Flow Control.....	1

FIGURE 23-1-1A. CANOPY
S/N 680313 and Above

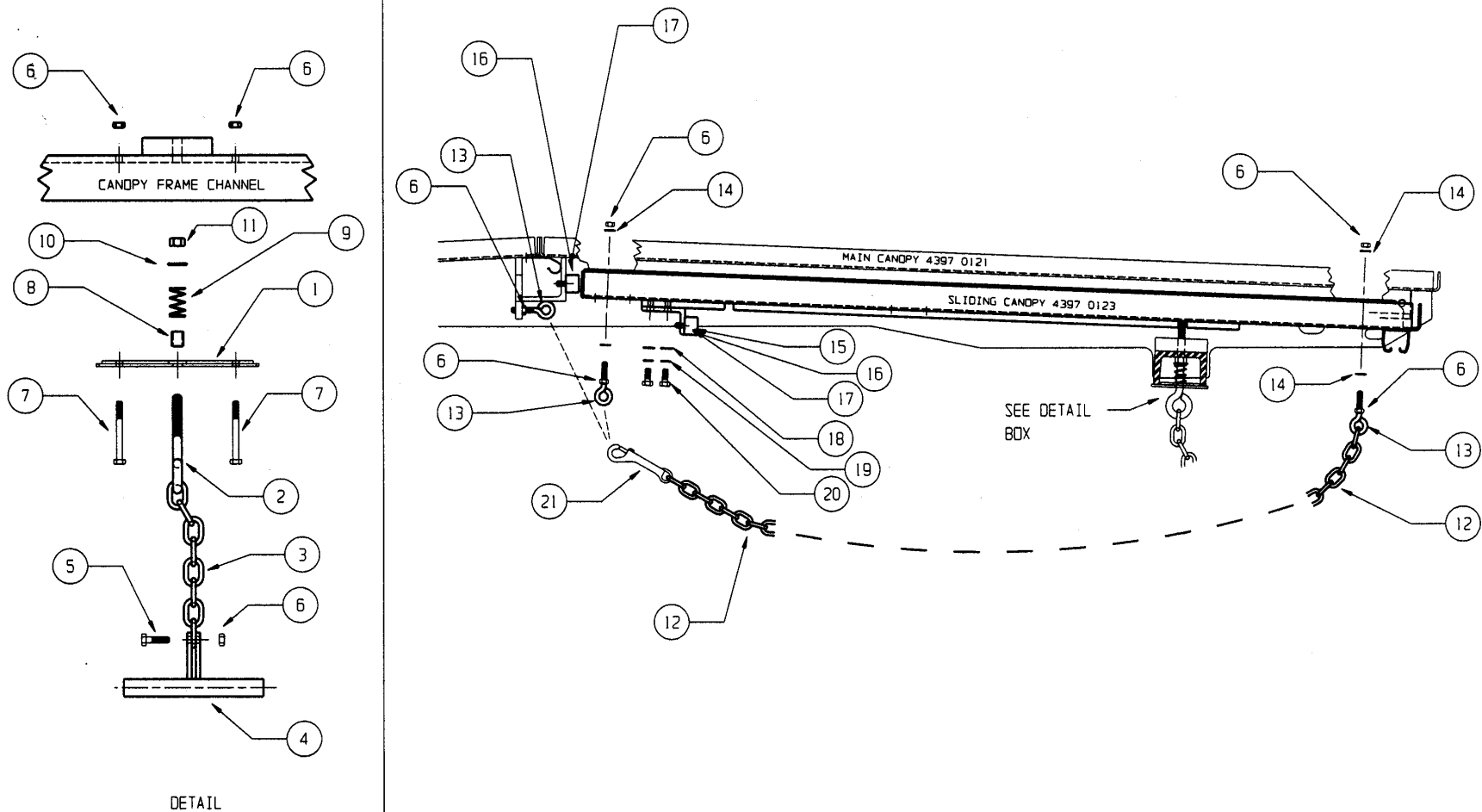




**FIGURE 23-1-1A. CANOPY
S/N 680313 and Above**

ITEM NO.	PART NO.	DESCRIPTION	UNITS PER ASSY
1	43970121	CANOPY, Main	1
3	2775351	CAPSCREW, Hex Head 2 x 3-1/2.....	2
4	3060476	WASHER, SAE 2	5
5	3042025	LOCKNUT, Hex 1/2-13.....	5
6	2775391	CAPSCREW, Hex Head 2-13 x 5-1/2	3
7	82653002	TUBE, Canopy Support.....	1
8	43970122	CANOPY, Travel Station	1
9	2774791	CAPSCREW, Hex Head 3/8 x 1-1/4...	3
10	3060031	WASHER, Wrought 3/8.....	6
11	3042020	LOCKNUT, Hex 3/8-16.....	3
13	43970123	CANOPY, Sliding	1
14	8076275	TROLLEY, Sliding Canopy.....	4
15	2774281	CAPSCREW, Hex Head 1/4-20 x 1....	8
16	3042013	LOCKNUT, Hex 1/4-20.....	8
17	3060464	WASHER, SAE 1/4	8
18*	96680274	HARNESS, Canopy.....	1

**FIGURE 23-1-2A. CANOPY
 Latch Assembly
 S/N 680287 and Above**





**FIGURE 23-1-2A. CANOPY
Latch Assembly
S/N 680287 and Above**

ITEM NO.	PART NO.	DESCRIPTION	UNITS PER ASSY
1	13088488	COVER, Latch.....	1
2	47510001	PIN, Canopy Latch	1
3	8025205	CHAIN, Latch	1
4	42017998	HANDLE, T-	1
5	2774281	CAPSCREW, Hex Head 1/4-20 x 1....	1
6	3042013	LOCKNUT, Hex 1/4-20.....	8
7	2774331	CAPSCREW, HH 1/4-20 x 2-1/2	2
8	82632150	SPACER, Latch Spring	1
9	3608988	SPRING, Latch.....	1
10	3060470	WASHER, SAE 3/8	1
11	3384270	PIN, Slotted	1
12	8025205	CHAIN, Pull	1
13	3180040	EYEBOLT, 1/4-20 x 1-1/2.....	3
14	3060464	WASHER, SAE 1/4	4
15	12286000	STOP, Angle	2
16	4518010	BUMPER, Rubber Stop.....	4
17	3027011	NUT, Hex 1/4-20	4
18	3060467	WASHER, SAE 5/16	3
19	3065907	LOCKWASHER, 5/16.....	3
20	2774521	CAPSCREW, 5/16 x 3/4.....	3
21	8025856	SNAP, Chain	1