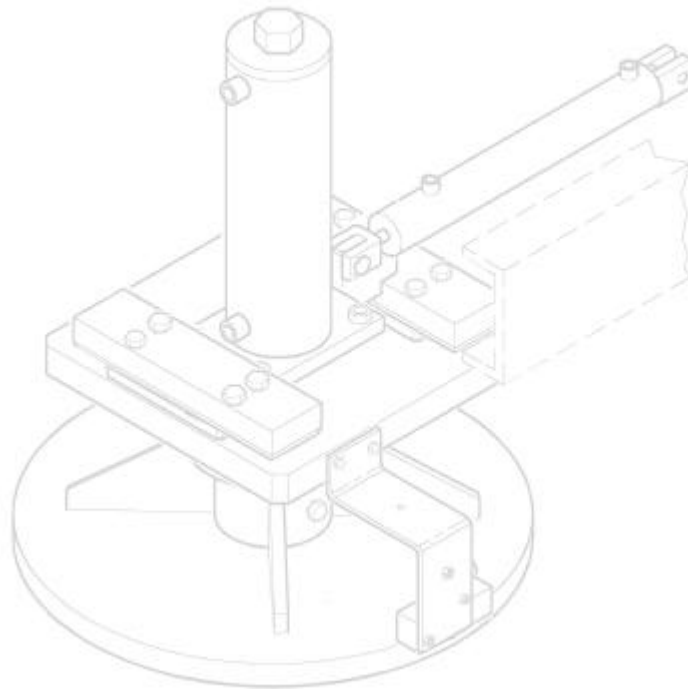




Appendix

C



ANCHOR APPLICATOR E

Sliding Turntable System

All rights reserved. In view of the constant improvements to our equipment, the specification data and other technical information included in this Appendix are subject to change. No part of this Appendix may be reproduced in any form or by any means without our written permission.

TABLE OF CONTENTS

SAFETY

Understanding Key Safety Alert Words	3
General Safety Tips	4
Safety Alerts	5
Lockout/Tagout Devices (includes layout drawing)	6

BEFORE OPERATION

Location of Components	7
Controls	8

OPERATION 9**MAINTENANCE AND SERVICE**

General	10
Instructions	11
Re-Assembly Precautions (IMPORTANT!!)	11

PARTS SHEETS

Turntable Assembly	68-22-3
Hydraulic Schematic	9668 0331 Sheet 2 of 3
Electrical Schematic	9668 0331 Sheet 2 of 3
Component Layout	9668 0331 Sheet 3 of 3

This Page Intentionally Left Blank.

SAFETY

Please read and comply with all of the safety precautions in this Appendix BEFORE operating this machine.

GENERAL

DO NOT use this option for machine operations other than for which it was intended.


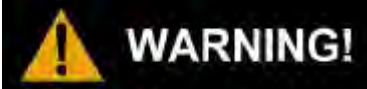
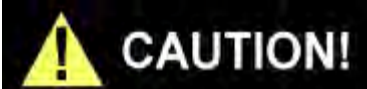
NORDCO is not responsible for any modifications made without authorization or written approval. Replace all NORDCO and OEM parts with genuine NORDCO or OEM parts. Use of non-OEM parts could compromise the safety of your machine.

FOLLOW SAFETY INSTRUCTIONS

Carefully read all safety messages in this manual. Learn how to operate this option and how to use controls properly. Do not let anyone operate this option without instruction.

SAFETY ALERT SYMBOLS!

These are the safety-alert symbols. These symbols means pay attention! Your safety is at risk!

SYMBOL	MEANING
	<p>DANGER typically defines the most serious hazards. DANGER usually means that improper use could result in severe bodily harm or even death.</p>
	<p>WARNING means that improper use could result in bodily harm and/or extensive machine damage.</p>
	<p>CAUTION means that improper use could result in machine damage.</p>

SAFETY DURING WORK AND TRAVEL

To prevent injury to personnel or damage to the machine, it is highly recommended to:

1. Make certain personnel keep away from any moving assembly during working operations.
2. Make certain lockups are kept clear and free of debris, grease, etc. See **Lockup** section for instructions on their use.
3. Make certain lockups are in place during work and travel.

SAFETY DURING MAINTENANCE

Alert others in the area that service or maintenance is being performed on this machine. Become familiar with, and use, **your company's lockout/tagout** procedures when performing maintenance on this machine. See **LOCKOUT/TAGOUT REQUIREMENTS** later in this Safety Section for a chart on energy sources located on this machine.

Do not start the engine if repairs or work is being performed alone. You should always have at least two people working together if the engine must be run during service. One person needs to remain in the **command** position (at the controls), ready to stop the machine and shut off engine if the need arises.

MACHINE SAFETY ALERTS



DANGER ALERTS

WORDING	FOUND ON PAGE
Improper use of this option for any type of operation can cause serious injury or death.	8
Serious injury or death can result from reaching into working components while machine is running. Make all observations from a distance and SHUT OFF machine while making adjustments.	9, 10



WARNING ALERTS

WORDING	FOUND ON PAGE
Tighten fittings only when system is not pressurized. High pressure leaks can cause personal injury.	10

LOCKOUT AND/OR TAGOUT PROCEDURES (5/99)

It is your company's responsibility to develop **Lockout/Tagout Procedures**, train you in their proper and safe use, and to periodically inspect your work area to verify that you are complying with the procedures. **Lockout/Tagout Procedures must be followed!**

NORDCO has provided the means to lockout this option. NORDCO cannot be held responsible for injury caused by failure to comply with your company's **Lockout/Tagout Procedures**.

**ENERGY SOURCES (5/99)
SLIDING TURNTABLE SYSTEM**

The following list provides information on energy sources located on this option and instructions for inserting manual lockups, if applicable. It is your company's responsibility to incorporate these instructions into their **Lockout/Tagout Procedures**.

When servicing or performing maintenance on:	Energy Source to be locked out:	Use this procedure:
Solenoid Valve (Electrical Component)	Electrical	1) Turn the ignition switch to the OFF position (logic box). If working on the logic box, continue on to step 2, otherwise close and lock the logic box cover. 2) Turn the battery disconnect switch to the OFF position and close and lock the disconnect switch box. This will cut off electrical power supply to the machine.
Sliding Turntable	Hydraulic	1) Turn the ignition switch to the OFF position (logic box). Close and lock the logic box cover. 2) Turn the battery disconnect switch to the OFF position and close and lock the disconnect switch box. This will cut off hydraulic pressure to hydraulic components of the machine.

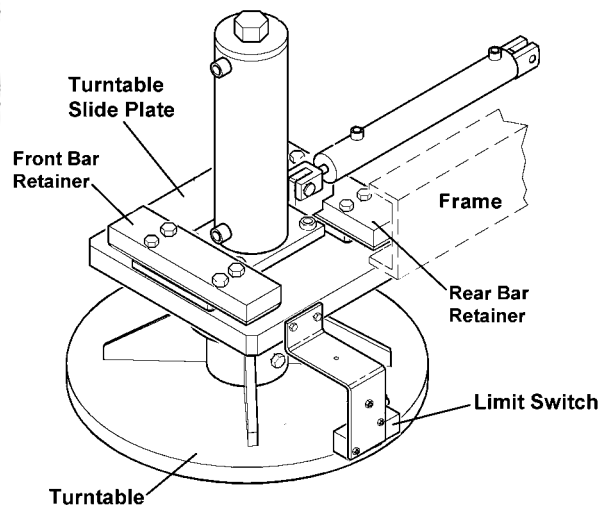
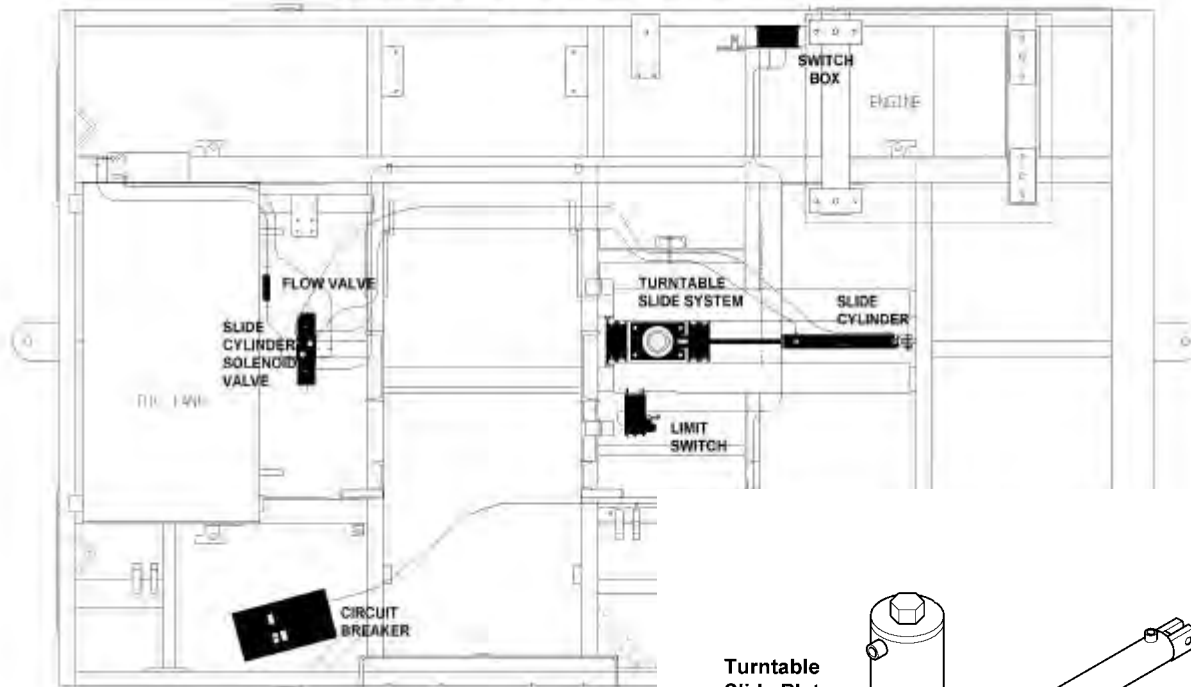
BEFORE OPERATION

It is always good practice to become totally familiar with the machines that you are going to operate. In addition, it is good practice to become familiar with all of the options on your machine.

The **Sliding Turntable System** allows you to balance the machine on the turntable depending on the amount of anchors that are in the anchor hopper and anchor dump bin. In short, the position of the turntable depends on the amount of anchors being stored on the machine.

The following two drawings illustrate the Sliding Turntable System components:

LOCATIONS OF COMPONENTS



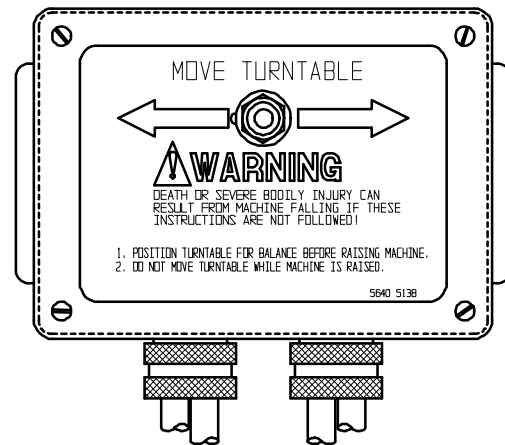


IMPROPER USE OF THIS OPTION FOR ANY TYPE OF OPERATION CAN CAUSE SERIOUS INJURY OR DEATH.

CONTROLS

Switch Box

The position of the turntable is adjusted through use of a switch box assembly located next to the turntable set-off valve. See top figure. A three position (ON-OFF-ON) switch controls the movement of the turntable. Moving the switch to the left moves the turntable to the left (direction indicated by the operator standing at the switch box). Moving the switch to the right moves the turntable to the right. **Note: Positioning of the turntable must be done BEFORE the turntable is lowered.**



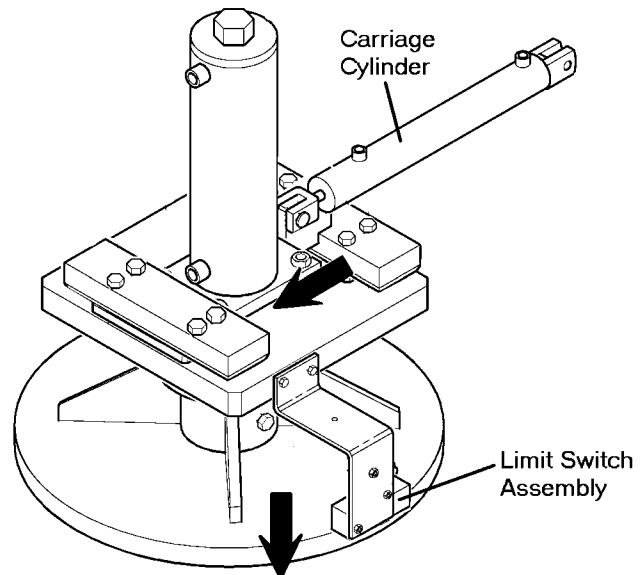
Limit Switch

A limit switch assembly is mounted to the side of the turntable sliding plate. The purpose of this switch is as follows: When the switch is activated by the turntable being lowered, power to the turntable directional control switch box is disabled. This prevents movement of turntable while it is being lowered. **Note: Positioning of the turntable must be done BEFORE the turntable is lowered.**

HYDRAULICS

A carriage cylinder controls the movement of the sliding turntable assembly. This provides 12 inches of movement for the turntable to adjust for machine load.

A second cylinder, the set-off cylinder, is locked in the up position. The ports on the cylinder must always face away from the carriage cylinder. See drawing to right.



OPERATION

To use the sliding turntable:



Serious injury or death can result from reaching into working components while machine is running. Make all observations from a distance and SHUT OFF machine while making adjustments.

1. Position machine so that the turntable rests across two solid and level ties.
2. Unlock set-off valve handle. Slowly lift handle to lower turntable until it comes into contact with ties. **Note: The limit switch will trigger at this point, cutting off power to turntable slide cylinder (carriage cylinder) solenoid valve.**
3. Hold valve hand lever until the machine is fully raised off the track. Determine which end of the machine is causing any unbalance of the machine.
4. Lower the machine so that it rests back on the track. Lock valve handle to prevent accidental lifting of the machine while adjusting the position of the turntable.
5. Using the toggle switch on the turntable switch assembly, hold the switch in the direction of the machine that was top heavy.
6. Repeat steps two (2) through five (5) until the machine is balanced.
7. Perform machine rotation.
8. Slowly move the set-off valve hand lever downward. The turntable cylinder will retract and the machine will lower on to the track.
9. Lock set-off valve.

MAINTENANCE

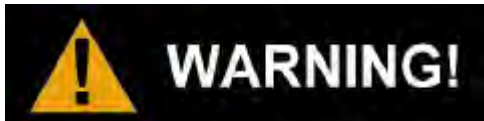
GENERAL

Recommended service intervals are for normal operating conditions. Service more often if engine is operated under adverse conditions (See Maintenance for Extreme Conditions later in this section). Neglecting maintenance can result in failures or permanent damage to equipment.

SAFETY DURING MAINTENANCE

Alert others in the area that service or maintenance is being performed on this machine. Become familiar with, and use, your company's **lockout-tagout** procedures when performing maintenance on this machine. See **LOCKOUT-TAGOUT REQUIREMENTS** in the **Safety Section** of this manual.

Do not start the engine if repairs or work is being performed alone. You should always have at least two people working together if the engine must be run during service. One person needs to remain in the **command** position (at the controls), ready to stop the machine and shut off engine if the need arises.



Tighten fittings only when system is not pressurized. High pressure leaks can cause personal injury.

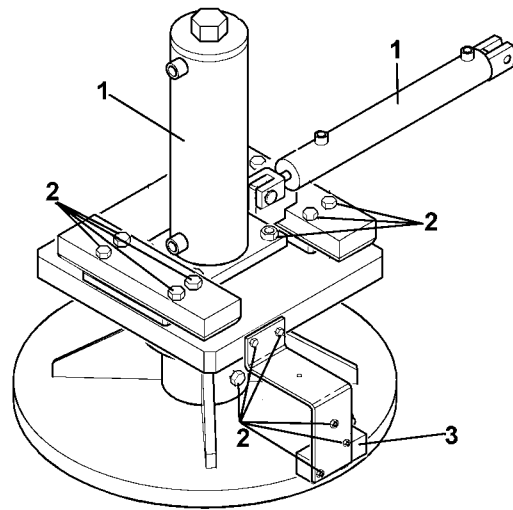


Serious injury or death can result from reaching into working components while machine is running. Make all observations from a distance and SHUT OFF machine while making adjustments.

MAINTENANCE

Maintenance should be done as follows:

1. Check cylinders for seal or fitting leaks. Repair as required.
2. Check mounting hardware for tightness.
3. Check limit switch lever for tightness and to make certain it is not bent. Replace lever as required.
4. Check limit switch adjustments and functionality. The turntable should not slide fore and aft unless the turntable is nearly all the way up.

**RE-ASSEMBLY PRECAUTIONS**

If the need arises to take this assembly apart, it is critical that the bottom of the frame channel is **BETWEEN** the Bar Retainers and the Slide Plate. See bottom figure.

