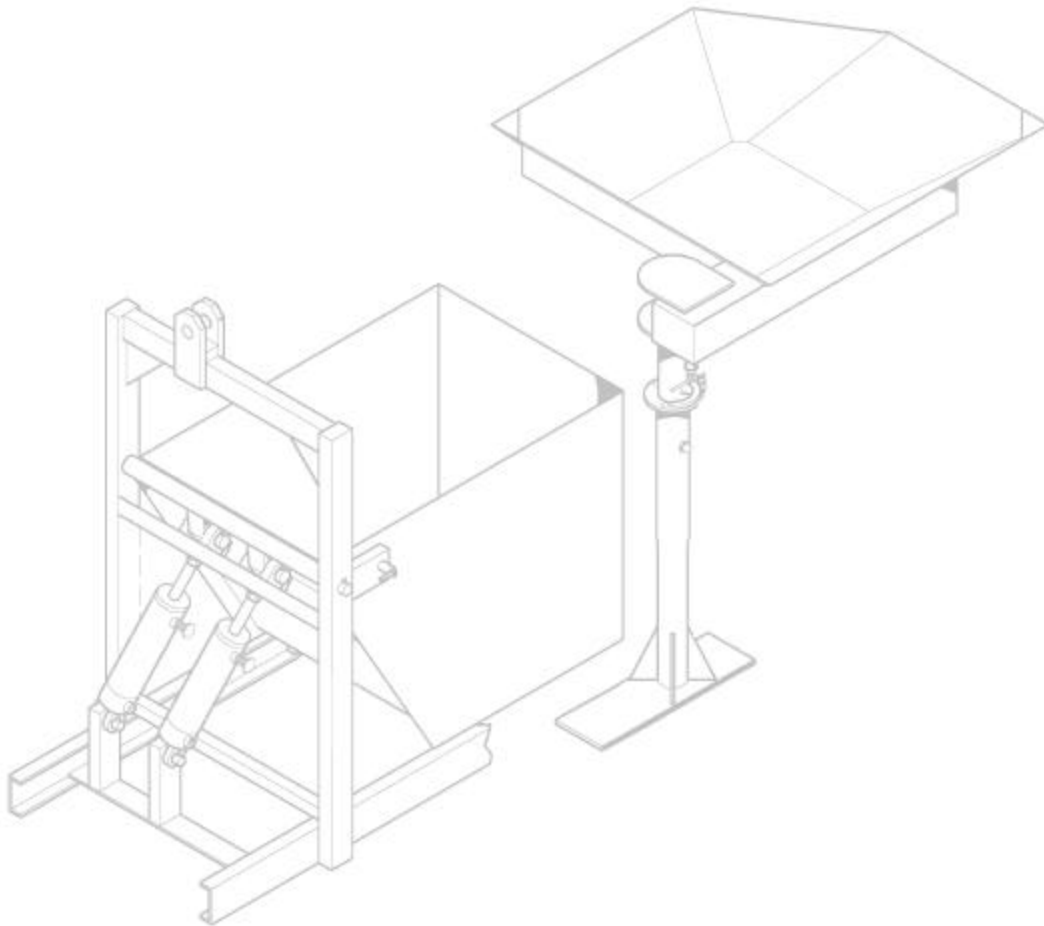




Appendix

B



ANCHOR APPLICATOR E BULK LOADING SYSTEM

All rights reserved. In view of the constant improvements to our equipment, the specification data and other technical information included in this Appendix are subject to change. No part of this Appendix may be reproduced in any form or by any means without our written permission.

TABLE OF CONTENTS

SAFETY

Understanding Key Safety Alert Words 3
General Safety Tips 4
Safety Alerts 5
Lockout/Tagout Procedures 6

GENERAL

Specifications 7

BEFORE OPERATION

Getting Familiar with this Option 8
Lockups 9

OPERATION 11

MAINTENANCE AND SERVICE

General 12
Instructions 13

PARTS SHEETS

Bin Lift System 68-15-3
Hydraulic Schematic 9668 0332
Installation Schematic 9668 0332

This Page Intentionally Left Blank.

SAFETY

Please read and comply with all of the safety precautions in this Appendix BEFORE operating this machine.

GENERAL

DO NOT use this option for machine operations other than for which it was intended.



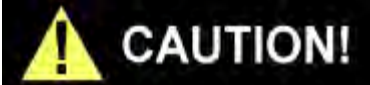
NORDCO is not responsible for any modifications made without authorization or written approval. Replace all NORDCO and OEM parts with genuine NORDCO or OEM parts. Use of non-OEM parts could compromise the safety of your machine.

FOLLOW SAFETY INSTRUCTIONS

Carefully read all safety messages in this manual. Learn how to operate this option and how to use controls properly. Do not let anyone operate this option without instruction.

SAFETY ALERT SYMBOLS!

These are the safety-alert symbols. These symbols means pay attention! Your safety is at risk!

SYMBOL	MEANING
	DANGER typically defines the most serious hazards. DANGER usually means that improper use could result in severe bodily harm or even death.
	WARNING means that improper use could result in bodily harm and/or extensive machine damage.
	CAUTION means that improper use could result in machine damage.

SAFETY DURING WORK AND TRAVEL

To prevent injury to personnel or damage to the machine, it is highly recommended to:

1. Make certain personnel keep away from any moving assembly during working operations.
2. Make certain lockups are kept clear and free of debris, grease, etc. See **Lockup** section for instructions on their use.
3. Make certain lockups are in place during work and travel.

SAFETY DURING MAINTENANCE

Alert others in the area that service or maintenance is being performed on this machine. Become familiar with, and use, **your company's lockout/tagout** procedures when performing maintenance on this machine. See **LOCKOUT/TAGOUT REQUIREMENTS** later in this Safety Section for a chart on energy sources located on this machine.

Do not start the engine if repairs or work is being performed alone. You should always have at least two people working together if the engine must be run during service. One person needs to remain in the **command** position (at the controls), ready to stop the machine and shut off engine if the need arises.

MACHINE SAFETY ALERTS



DANGER ALERTS

WORDING	FOUND ON PAGE
Improper use of this option for any type of operation can cause serious injury or death.	8
Serious injury or death can result from reaching into working components while machine is running. Make all observations from a distance and SHUT OFF machine while making adjustments.	11



WARNING ALERTS

WORDING	FOUND ON PAGE
Failure to engage all lockup devices (except dump bin) before propelling at travel speed can result in injury to personnel and/or extensive damage to the machine.	9, 10
Tighten fittings only when system is not pressurized. High pressure leaks can cause personal injury.	11

LOCKOUT AND/OR TAGOUT PROCEDURES (5/99)

It is your company’s responsibility to develop **Lockout/Tagout Procedures**, train you in their proper and safe use, and to periodically inspect your work area to verify that you are complying with the procedures. **Lockout/Tagout Procedures must be followed!**

NORDCO has provided the means to lockout this option. NORDCO cannot be held responsible for injury caused by failure to comply with your company’s **Lockout/Tagout Procedures**.

**ENERGY SOURCES (5/99)
BIN LIFT SYSTEM**

The following list provides information on energy sources located on this option and instructions for inserting manual lockups, if applicable. It is your company’s responsibility to incorporate these instructions into their **Lockout/Tagout Procedures**.

When servicing or performing maintenance on:	Energy Source to be locked out:	Use this procedure:
Anchor Funnel	Gravity	1) Make certain that Anchor Funnel is in the position desired for performing maintenance or service. 2) Insert Lock Pin at desired position (#1 or #2). This will prevent accidental or unintentional movement of the anchor funnel.
Bin Lift Cylinders*	Hydraulic	1) Make certain that the lift bin is in the down position (cylinder rods fully retracted). 2) Turn the ignition switch to the OFF position (logic box). Close and lock the logic box cover. 3) Turn the battery disconnect switch to the OFF position and close and lock the disconnect switch box. This will cut off hydraulic pressure to hydraulic components of the machine.
Anchor Dump Bin*	Gravity	1) Make certain that the lift bin is in the down position (cylinder rods fully retracted). 2) Turn the ignition switch to the OFF position (logic box). Close and lock the logic box cover. 3) Turn the battery disconnect switch to the OFF position and close and lock the disconnect switch box. This will cut off hydraulic pressure to hydraulic components of the machine.

*or raise anchor dump bin and engage both anchor bin lockup pins.

GENERAL

Changes to the specifications given in the main machine manual are as follows:

SPECIFICATIONS

Gross Weight.....17,000 lbs (7710 kg)

Length

With funnel locked in travel position.....14 feet 10 inches (453 cm)
With funnel extended and locked in work position18 feet 6 inches (564 cm)

Capacities

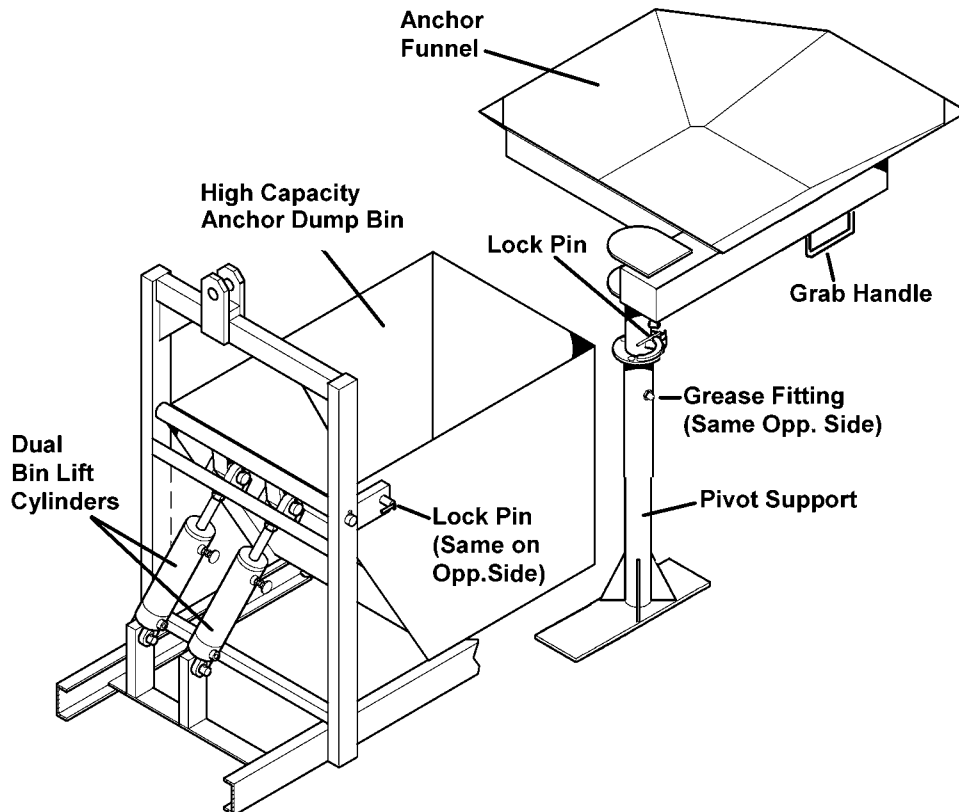
Anchor Hopper Storage.....1500 Anchors
Anchor Dump Bin Storage3000 Anchors

BEFORE OPERATION

It is always good practice to become totally familiar with the machine that you are going to operate. In addition, it is good practice to become familiar with all of the options on your machine.



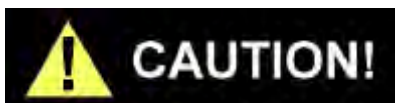
Improper use of this option for any type of operation can cause serious injury or death.



ANCHOR FUNNEL

The anchor funnel is a manually swung, three position funnel to allow easy locating of the funnel over the large anchor dump bin.

The funnel locks in three positions, of which two positions are recommended for use:



Do not raise or lower the anchor dump bin unless the anchor funnel is rotated to the dump bin lift position #2 (see page 10). Otherwise they may collide and cause machine damage.

Do not raise or lower the anchor dump bin unless the anchor funnel is rotated to the dump bin lift position #2 (see page 10). Otherwise they may collide and cause machine damage.

Position #1, Dump Bin Load

This position locks the funnel over the dump bin for mass anchor loading. This position can only be accessed if the dump bin is lowered (cylinders fully retracted). This is the position recommended for travel.

Position #2, Dump Bin Lift

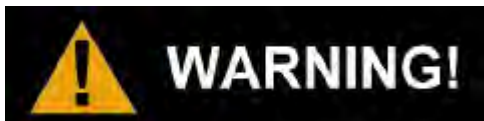
This position locks the funnel over the rear of the machine (over the tracks) to allow the operator to raise the dump bin to feed the storage hopper in front of the operator.

LOCK-UPS

There are areas designated as lock-up points. Lock-up points are those areas required to be locked up prior to working travel through crossings, switches or other rail obstructions or during high speed travel (non-working travel), as well as during maintenance and service of this machine – UNLESS lockup of the assembly prevents access to area being maintained. These have been painted red and have a decal located next to or on the area requiring locking up.

The high capacity anchor dump bin must be locked up (using both lockup pins – one on each side) if the bin is to be left in the raised position at any time other than while working. When not working, the dump bin should be lowered. No one should ever get under a raised bin without engaging both lockup pins.

The funnel should be locked in either of the two positions during work. During travel the funnel should be locked in position #1, (dump bin loading position)(see page



Failure to engage all lockup devices before propelling at travel speed can result in injury to personnel and/or extensive damage to the machine.

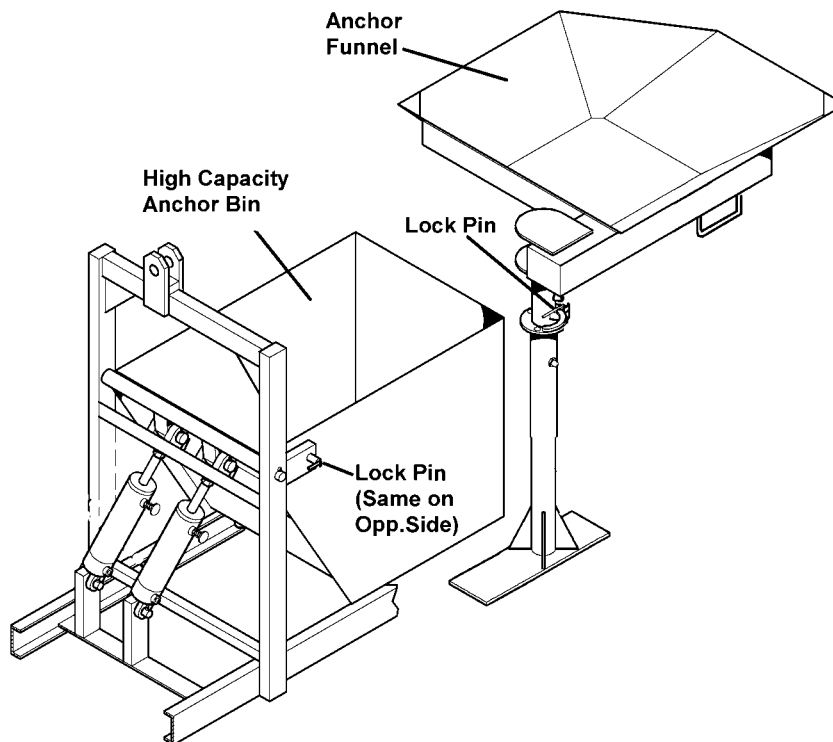
Use the following procedures to install or remove lock-ups:

High Capacity Bin

1. Using the Bin Lift Valve located next to the Operator station, raise the lift bin until the cylinder rods are fully extended.
2. Insert the two lock pins (located on the bin lift frame, see figure below).

Anchor Funnel

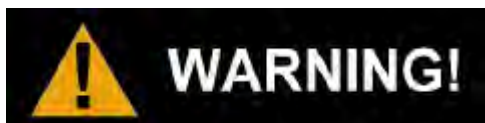
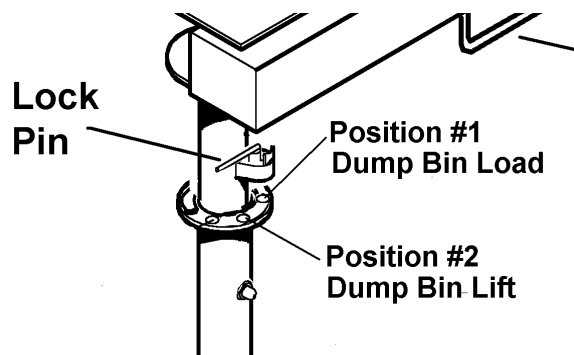
1. Lift the lock pin located on the pivot arm of the anchor funnel.
2. Swing the funnel into the desired position.
3. Lower the lock pin into position hole desired.



OPERATION

To use the anchor funnel:

1. Lower the dump bin to its full down position (cylinder rods are fully retracted).
2. Lift lock pin in pivot support mounting to free the swing motion of the funnel. **Note: This pin should NOT be removed under any circumstances other than replacement of a damaged pin.**
3. Swing the funnel into position over the dump bin (Position #1 in drawing).
4. Lower lockpin into position to lock the funnel in place.
5. Begin dumping anchors through funnel into dump bin.
6. When dump bin is full, lift lock pin and swing funnel until position #2 is reached. Lower lockpin into place.
7. After funnel has been moved to position #2 and locked in place, you can now operate the dump bin without interference from the funnel.
8. Raise and lower the dump bin using the dump bin valve controls located next to the operator station.



Failure to engage all lockup devices before propelling at travel speed can result in injury to personnel and/or extensive damage to the machine.

9. Once working operations are completed, make certain all lockups are in place.

MAINTENANCE

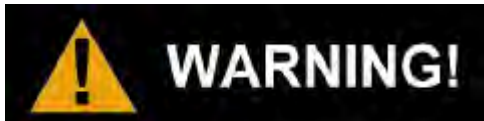
GENERAL

Recommended service intervals are for normal operating conditions. Service more often if engine is operated under adverse conditions (See Maintenance for Extreme Conditions later in this section). Neglecting maintenance can result in failures or permanent damage to equipment.

SAFETY DURING MAINTENANCE

Alert others in the area that service or maintenance is being performed on this machine. Become familiar with, and use, your company’s **lockout-tagout** procedures when performing maintenance on this machine. See **LOCKOUT-TAGOUT REQUIREMENTS** in the **Safety Section** of this manual.

Do not start the engine if repairs or work is being performed alone. You should always have at least two people working together if the engine must be run during service. One person needs to remain in the **command** position (at the controls), ready to stop the machine and shut off engine if the need arises.

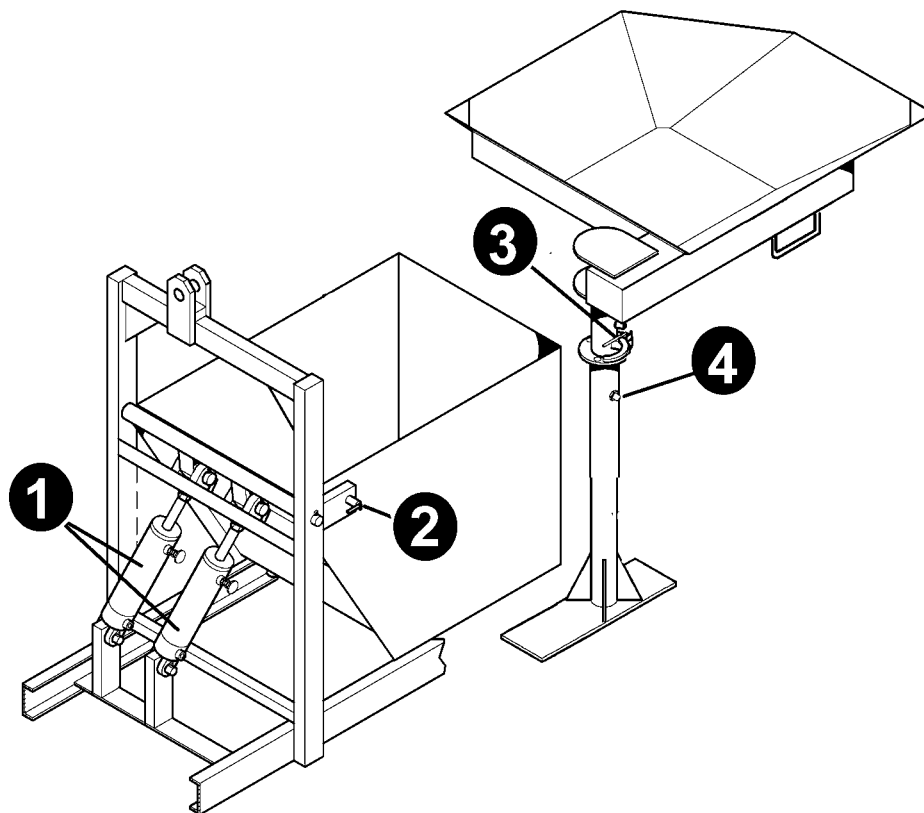


Tighten fittings only when system is not pressurized. High pressure leaks can cause personal injury.



Serious injury or death can result from reaching into working components while machine is running. Make all observations from a distance and SHUT OFF machine while making adjustments.

BIN LIFT MAINTENANCE

**#1 – BIN LIFT CYLINDERS**

Check cylinders for seal or fitting leaks on a **daily basis**. Repair as required. An exploded view drawing including repair parts for this cylinder can be found at the end of this appendix.

Check mounting hardware on a weekly basis.

#2 – BIN LOCK PINS (Qty: 2)

Check lockpins. Repair or replace if damaged or missing. **DO NOT OPERATE THIS MACHINE IF THE LOCKPINS ARE MISSING.**

#3 – FUNNEL LOCK PIN

Check lockpin. Repair or replace if damaged or missing. **DO NOT OPERATE THIS MACHINE IF THE LOCKPIN IS MISSING.**

Check the lockpin stop located directly above the lockpin. If missing, replace immediately. This stop prevents the lockpin from being removed. **DO NOT OPERATE THIS MACHINE IF THE LOCKPIN STOP IS MISSING.**

#4 – PIVOT SUPPORT GREASE FITTINGS (Qty: 2)

Grease fittings should be lubricated on a weekly basis.